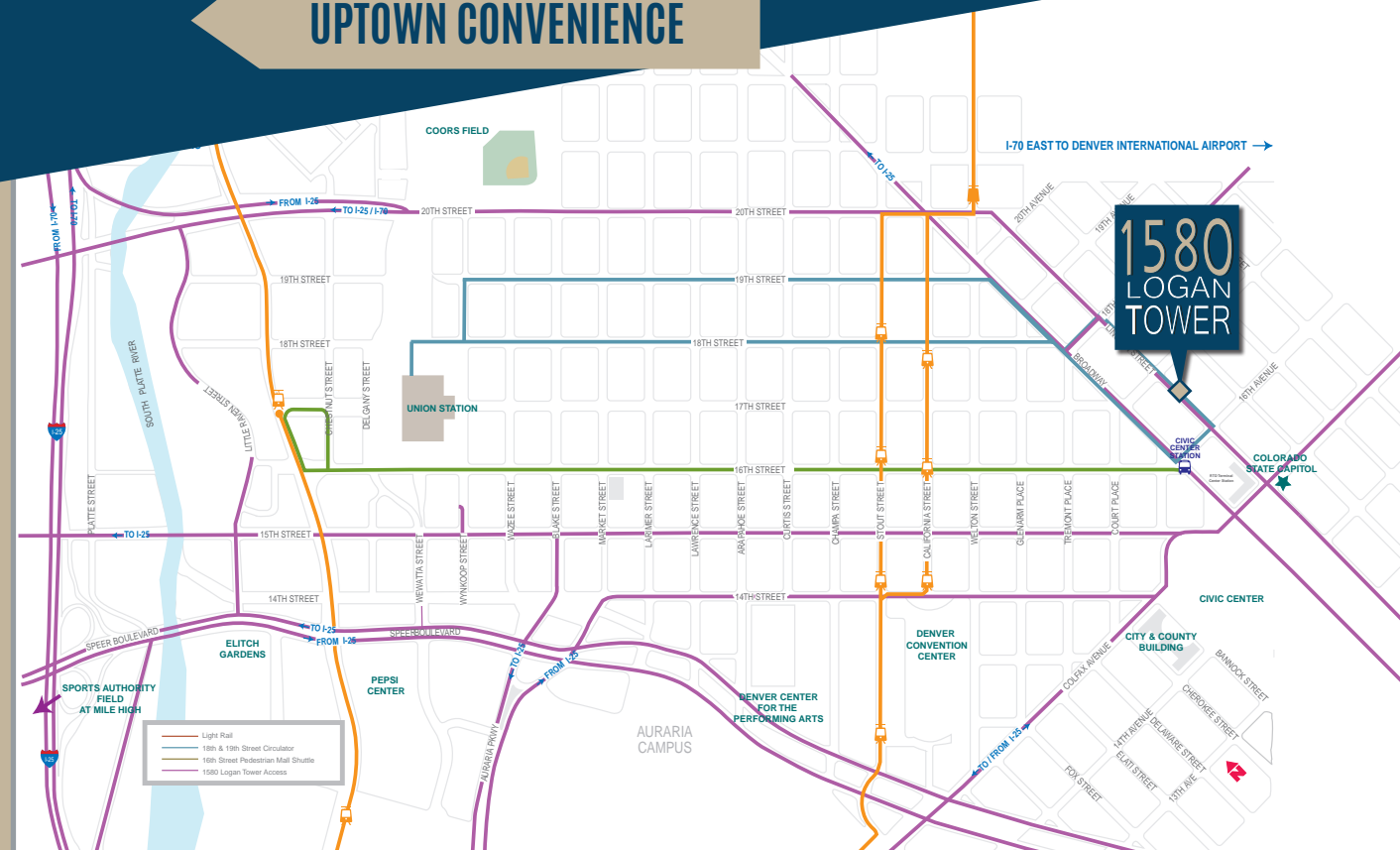


## DOWNTOWN AMENITIES

## UPTOWN CONVENIENCE



Logan Tower is conveniently located at the corner of 16th and Logan on the edge of the Central Business District.

This location provides easy access to downtown and it is two blocks from the State Capitol. You receive all the benefits of the downtown amenities with the convenience of being located in Uptown.



Leasing and Marketing by:

Pete Staab 303.260.4346 pstaab@ngkf.com  
Keith Krombach 303.260.4394 kkrombach@ngkf.com



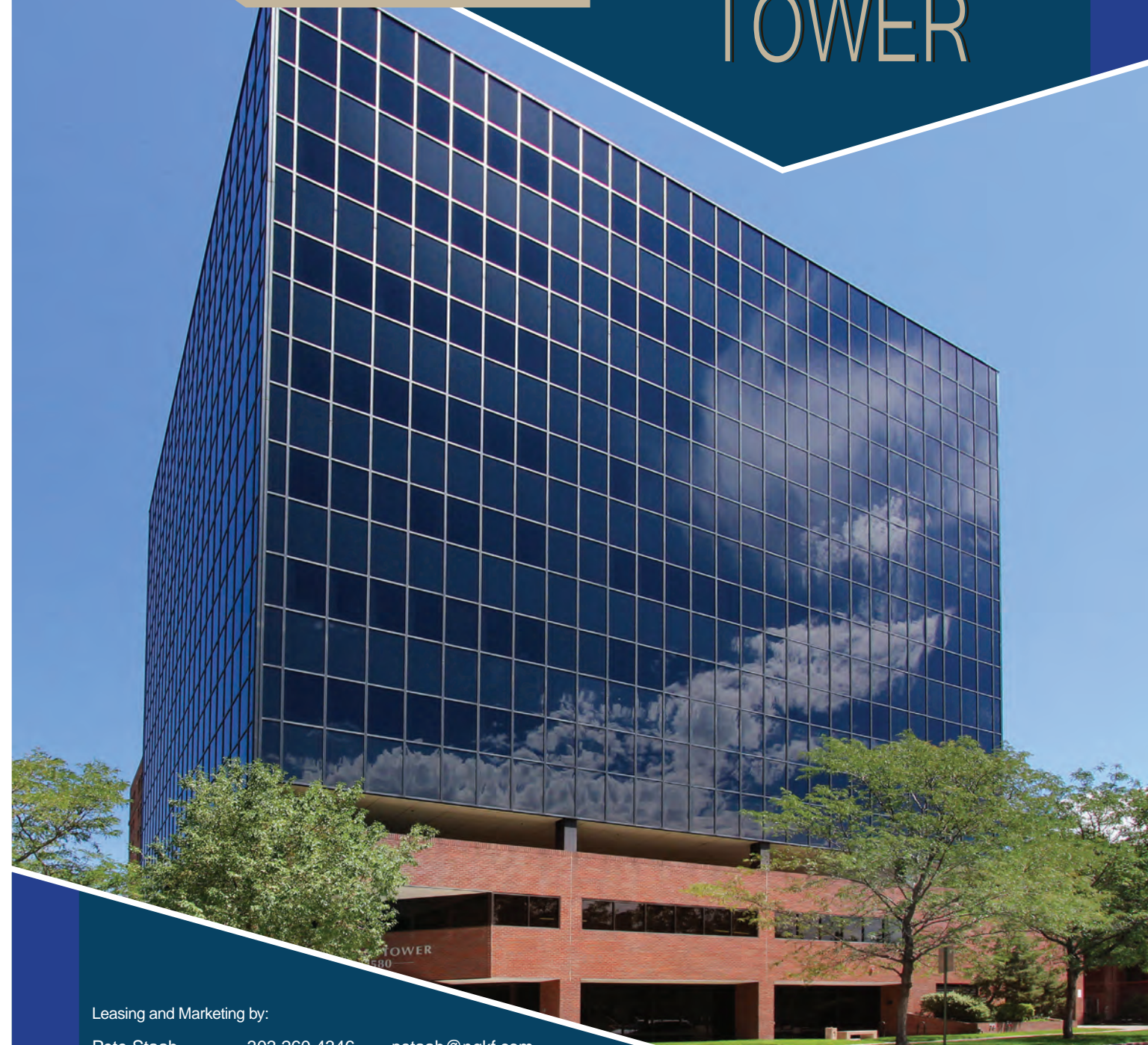
Owned by:



## DOWNTOWN AMENITIES

## UPTOWN CONVENIENCE

# 1580 LOGAN TOWER



Leasing and Marketing by:

Pete Staab 303.260.4346 pstaab@ngkf.com  
Keith Krombach 303.260.4394 kkrombach@ngkf.com



Owned by:





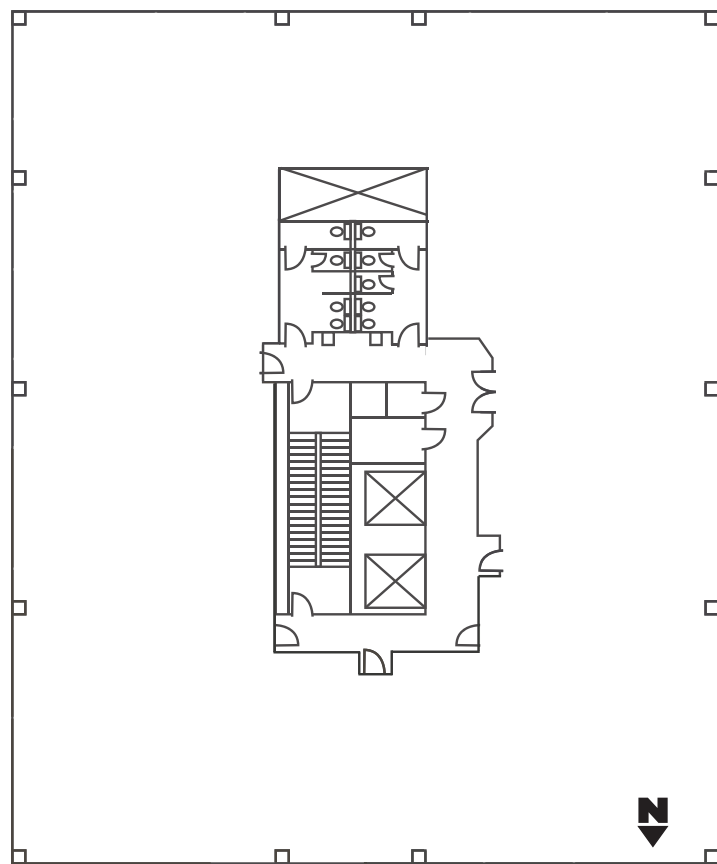
## DOWNTOWN AMENITIES,

## UPTOWN CONVENIENCE

Completely renovated with new common areas, lobby redesign, updated bathrooms and beautiful artwork throughout the building.



### Typical Floorplan



### PROPERTY HIGHLIGHTS:

- New Spec Suites
- On-site security
- 2.0:1,000 SF covered parking
- On-site common conference room
- On-site common break room
- On-site showers and lockers

INCREDIBLE WESTERN

& DOWNTOWN VIEWS!

### NEW COMMON AREAS



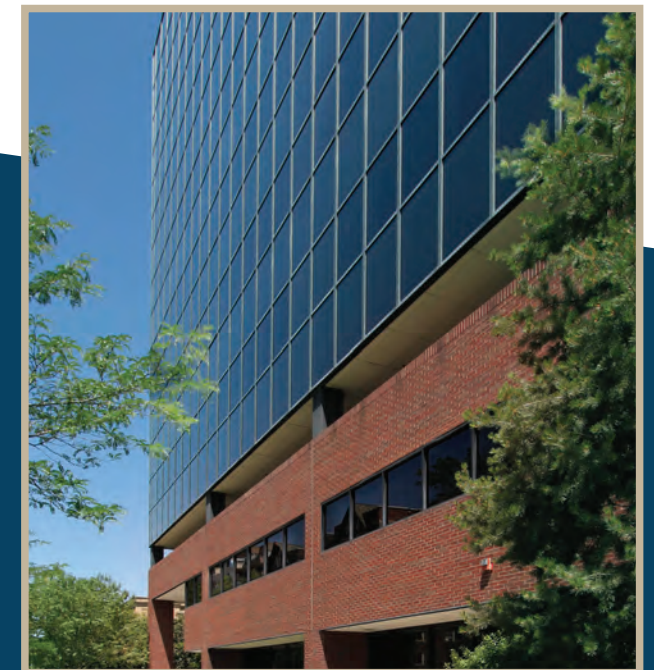
### UPGRADED CORRIDORS



### TRANSFORMED LOBBY



### SPEC SUITES AVAILABLE



1580  
LOGAN  
TOWER