



WELLS FARGO ANNEX BUILDING

350 SW JEFFERSON

PORTLAND, OREGON



FOR LEASE

CLASS A OFFICE SPACE

LOCATION: Strategically positioned adjacent to the Ivory Tower in the heart of Portland's financial and business districts

AVAILABLE SPACE: Third Floor - 23,517 RSF

LEASE RATE: Negotiable

TENANT

IMPROVEMENTS: Negotiable

PARKING: One stall per 1,000 square feet

BUILDING FEATURES:

- Features white Italian marble, bronze glass and anodized aluminum
- Peaceful views of Terry Schunk Park
- Amenities include full service banking, sundry shop, deli/bakery, hair salon, dry cleaner, and concierge
- 24 hour on-site security
- State of the art conference facility available in the tower
- Two full service restaurants

FOR MORE INFORMATION PLEASE CONTACT **Thomas Fellman**
503.221.4867
tom.fellman@cbre.com
www.cbre.com/tom.fellman

Charles Safley
503.221.4824
charles.safley@cbre.com
www.cbre.com/charles.safley

CBRE
CB RICHARD ELLIS

WELLS FARGO ANNEX BUILDING

350 SW JEFFERSON

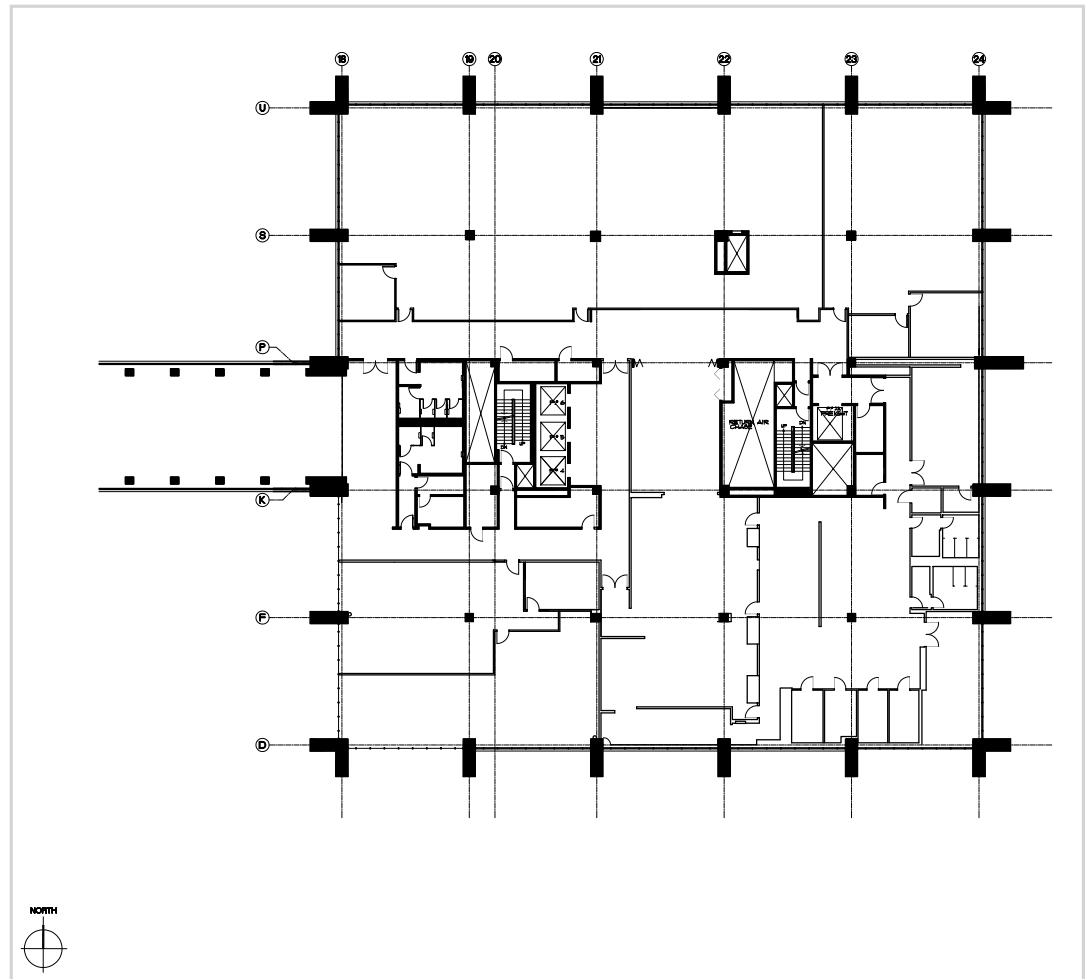
PORTLAND, OREGON

SPACE FEATURES:

- Ideal executive back office space
- Open and spacious floor plan
- High ceilings
- Floor to ceiling windows

THIRD FLOOR:

23,517 RSF



FOR MORE
INFORMATION
PLEASE
CONTACT

Thomas Fellman

503.221.4867

tom.fellman@cbre.com

www.cbre.com/tom.fellman

Charles Safley

503.221.4824

charles.safley@cbre.com

www.cbre.com/charles.safley

CB Richard Ellis | 1300 SW Fifth Ave. | Suite 200 | Portland, OR 97201 | www.cbre.com/portland

©2009 CB Richard Ellis, Inc. The information above has been obtained from sources believed reliable. While we do not doubt its accuracy, we have not verified it and make no guarantee, warranty or representation about it. It is your responsibility to independently confirm its accuracy and completeness.

CBRE
CB RICHARD ELLIS