

SALE

410 COLORADO AVENUE

Laurel, MT 59044



SALE PRICE

\$1,180,000

George Warmer, CCIM

406 855 8946

george@cbcmontana.com

Nathan Matelich, CCIM

406 781 6889

nathan@cbcmontana.com



**COLDWELL BANKER
COMMERCIAL**
CBS

SALE

410 COLORADO AVENUE

Laurel, MT 59044



PROPERTY DESCRIPTION

410 Colorado Avenue is located in the heart of Laurel, MT and is the perfect multifamily or residential condo redevelopment project. Listed at \$20 PSF, a buyer has the opportunity to purchase land and building “shell” for significantly less than what new construction costs today. The City of Laurel is rapidly growing and currently has a shortage of apartment rentals or condos. Laurel Public Schools current occupies a small portion of the building and would need to work out an exit strategy or short term lease back with a potential buyer.

OFFERING SUMMARY

Sale Price:	\$1,180,000
Lot Size:	90,000 SF
Building Size:	59,040 SF
Zoning:	Residential 6000

PROPERTY HIGHLIGHTS

- Currently Occupied by the Laurel Public Schools
- For Sale \$1,180,000 (\$20 PSF)
- 2 Buildings Totaling 59,050 SF
- School is 50,454 SF
- Auditorium is 7,900 SF
- 90,000 SF Lot
- Zoned Residential 6000
- Built in 1910
- Ideal Multifamily Redevelopment Opportunity

OTHER RESOURCES

[Virtual Tour](#)

George Warmer, CCIM
406 855 8946
george@cbcmontana.com

Nathan Matelich, CCIM
406 781 6889
nathan@cbcmontana.com



**COLDWELL BANKER
COMMERCIAL**
CBS

EXTERIOR PHOTOS

410 COLORADO AVENUE

Laurel, MT 59044



George Warmer, CCIM
406 855 8946
george@cbcmontana.com

Nathan Matelich, CCIM
406 781 6889
nathan@cbcmontana.com

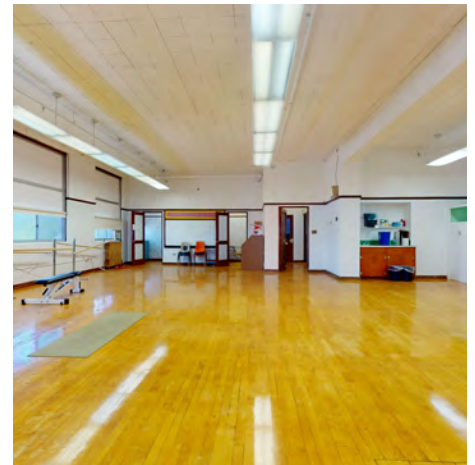


**COLDWELL BANKER
COMMERCIAL**
CBS

INTERIOR PHOTOS

410 COLORADO AVENUE

Laurel, MT 59044



George Warmer, CCIM
406 855 8946
george@cbcmontana.com

Nathan Matelich, CCIM
406 781 6889
nathan@cbcmontana.com

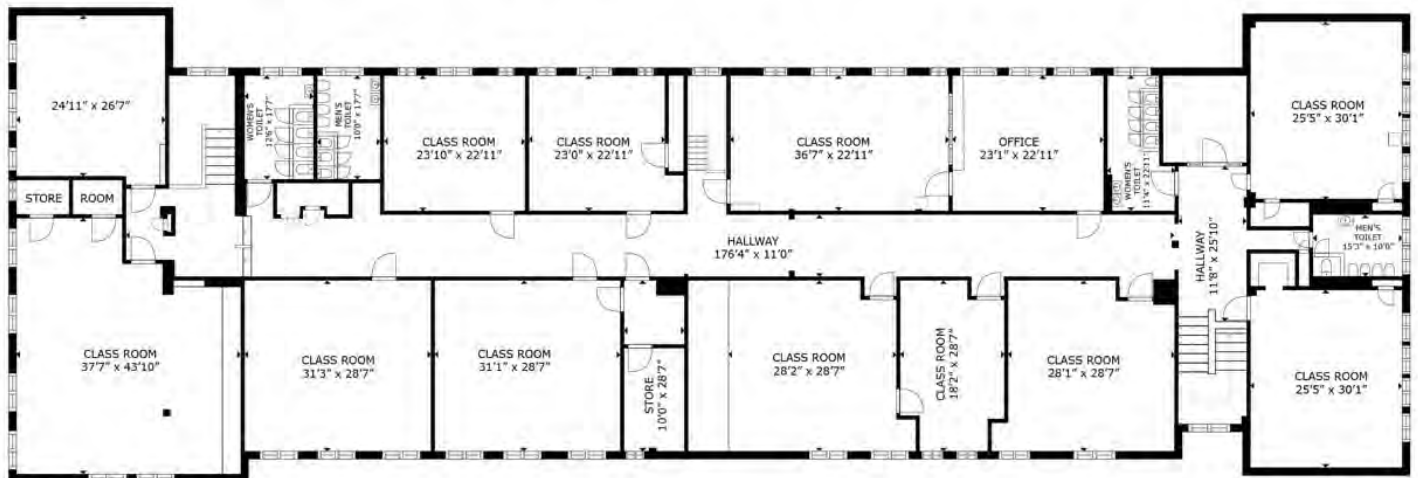


**COLDWELL BANKER
COMMERCIAL**
CBS

FLOOR PLANS (1ST & 2ND FLOOR)

410 COLORADO AVENUE

Laurel, MT 59044



FLOOR PLAN

George Warmer, CCIM
 406 855 8946
 george@cbcmontana.com

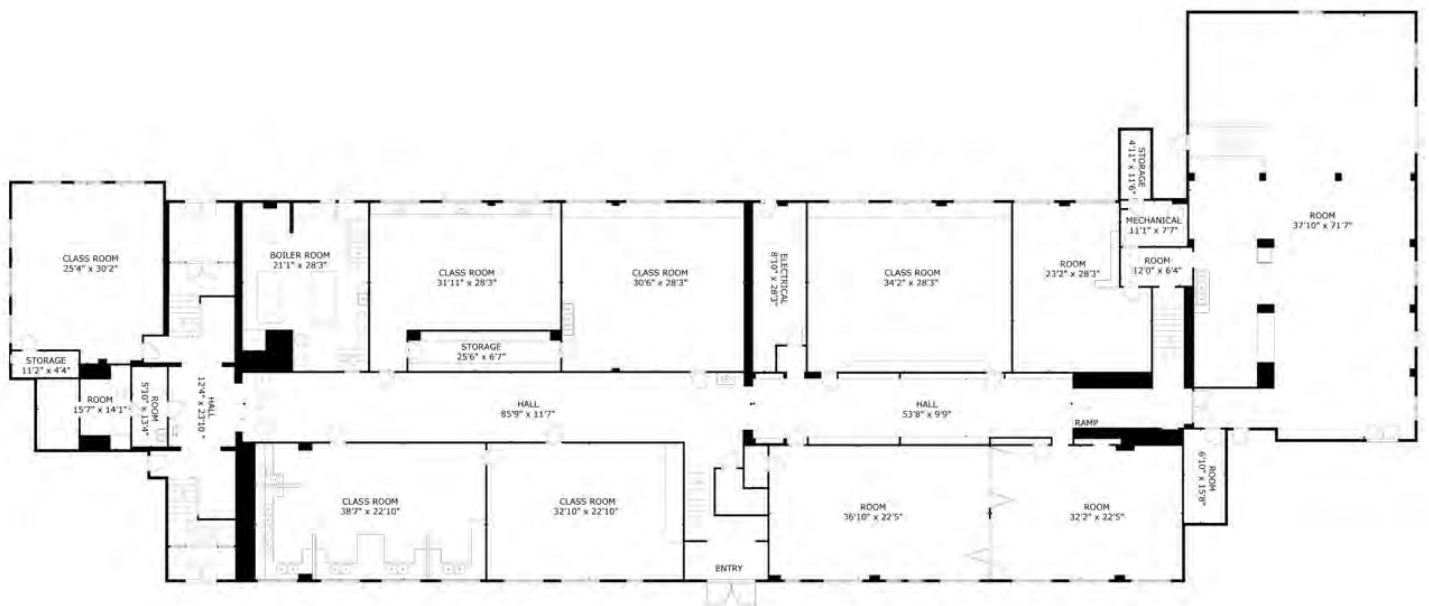
Nathan Matelich, CCIM
 406 781 6889
 nathan@cbcmontana.com



**COLDWELL BANKER
 COMMERCIAL**
 CBS

FLOOR PLAN (BASEMENT) 410 COLORADO AVENUE

Laurel, MT 59044



George Warmer, CCIM
406 855 8946
george@cbcmontana.com

Nathan Matelich, CCIM
406 781 6889
nathan@cbcmontana.com



**COLDWELL BANKER
COMMERCIAL**
CBS

MAP

410 COLORADO AVENUE

Laurel, MT 59044



George Warmer, CCIM
406 855 8946
george@cbcmontana.com

Nathan Matelich, CCIM
406 781 6889
nathan@cbcmontana.com



COLDWELL BANKER
COMMERCIAL
CBS

SALE

410 COLORADO AVENUE

Laurel, MT 59044



GEORGE WARMER, CCIM

Managing Partner

george@cbcmontana.com

Direct: 406.656.2001 | Cell: 406.855.8946

MT #RRE-RBS-LIC-14174

PROFESSIONAL BACKGROUND

George Warmer is the Managing Broker of Coldwell Banker Commercial CBS, specializing in sales, leasing, and development of commercial properties in Montana. George is a CCIM Designee and has worked in the commercial real estate business since 2005. During that time, he has brokered millions of dollars in leasing and sales transactions.

TRANSACTIONS OF NOTE

Sale: Site for 150,000 SF RVU Medical School Campus
Sale: 52,000 SF Fed Ex Facility
Sale: 108 Acre Montana Sapphire Mix Use Development
Sale: Land For Camping World
Sale: Land For Bretz RV
Leases: 10,000 SF Pizza Ranch Lease
Lease: 17,000 SF Shamrock Foods
Lease: Shiloh Commons a 65,000 SF Mixed-Use Development

EDUCATION

In 1987 George graduated with a Bachelor of Arts degree from USC and a MBA from the University of Denver in 1995. George's background in banking and management of personally owned businesses gave George a unique insight into the needs of his commercial clients. As a CCIM designee, George offers his clients the valuable analytical tools necessary to make sound commercial real estate decisions.

MEMBERSHIPS

In addition to handling his own commercial property listings portfolio and maintaining a large client base, George is actively involved in several trade, civic, and community organizations.

Board Member: Big Sky Economic Development Association

CBS

1215 24th Street Suite 240
Billings, MT 59102
406.656.2001

George Warmer, CCIM

406 855 8946

george@cbcmontana.com

Nathan Matelich, CCIM

406 781 6889

nathan@cbcmontana.com



**COLDWELL BANKER
COMMERCIAL**
CBS

SALE

410 COLORADO AVENUE

Laurel, MT 59044



NATHAN MATELICH, CCIM

Broker/Owner/CCIM

nathan@cbcmontana.com

Direct: **406.656.2001** | Cell: **406.781.6889**

MT #RRE-RBS-LIC-45092

PROFESSIONAL BACKGROUND

Nathan grew up in Great Falls, MT and has spent most of his life taking advantage of the amazing outdoor activities that Montana has to offer - camping, boating, fly fishing, skiing and everything in between. He got a bachelor's degree in Biochemistry from Loras College in Dubuque, IA and then completed an MBA in both Finance & Health Care Administration in Chicago. During this time he had the opportunity to work for a Fortune 500 company, teach a masters level business course, help an international Electronic Medical Records company expand its sales/operations to the US, started investing in multi-family real estate in 2009, became an energy efficiency specialist and helped grow a utility cost reduction company's sales/operations footprint from 1 state to now servicing all 50 states + Canada.

When he isn't spending time with his wife and 4 kids camping/fly fishing or on a ski hill, Nathan tries to stay involved in his local community by staying active at his church and attending business networking events to see how he can be a resource to other small business owners.

Nathan joined Coldwell Banker Commercial in 2015 after realizing that his true passion is real estate. He became a partner at Coldwell Banker Commercial CBS in January 2018 where he has consistently been a top producer earning the Bronze Circle of Distinction in 2019 & 2020 and Platinum Circle of Distinction in 2021 selling over \$50 million of commercial real estate.

In 2022, Nathan earned his CCIM designation - the equivalent of a Masters in Commercial Real Estate. CCIM's are experts at minimizing your risk, maximizing your ROI, and optimizing the value of your real estate.

Besides being passionate about Real Estate, Nathan is also passionate about helping others succeed. He wrote and published a book sharing his secret to success - "Unknown to Unstoppable: A Commercial Real Estate Broker's Guide to Dominating Your Market".

Nathan prides himself at being an expert at listing retail, office, industrial and multi-family properties and selling them faster and at a higher sales price. Because Nathan does what he loves, he feels like he will never have to "work" another day in his life.

CBS

1215 24th Street Suite 240
Billings, MT 59102
406.656.2001

George Warmer, CCIM

406 855 8946

george@cbcmontana.com

Nathan Matelich, CCIM

406 781 6889

nathan@cbcmontana.com



**COLDWELL BANKER
COMMERCIAL**
CBS