

FOR LEASE

Retail 24/7.

CENTRAL EASTSIDE LOCATION RETAIL/OFFICE SPACE FOR LEASE

1939 NE SANDY BLVD :: PORTLAND, OREGON 97232



- RATE** :: \$12 - 14 SF
- AVAILABILITY** :: 8,800 SF, single story
- AMENITIES** :: Signage available
- :: Great street visibility
- :: 22,000 ADT
- :: Flex office potential

2010 ESTIMATED DEMOGRAPHICS

	1 mile	3 miles	5 miles
POPULATION:	25,669	204,138	396,819
AVERAGE HH INCOME:	\$40,094	\$46,210	\$49,261
DAYTIME EMPLOYEES:	39,154	277,666	369,902

FOR MORE
INFORMATION
CONTACT

Dick Loffelmacher
503.221.4882
dick.loffelmacher@cbre.com

Brandon Slater
503.221.4833
brandon.slater@cbre.com

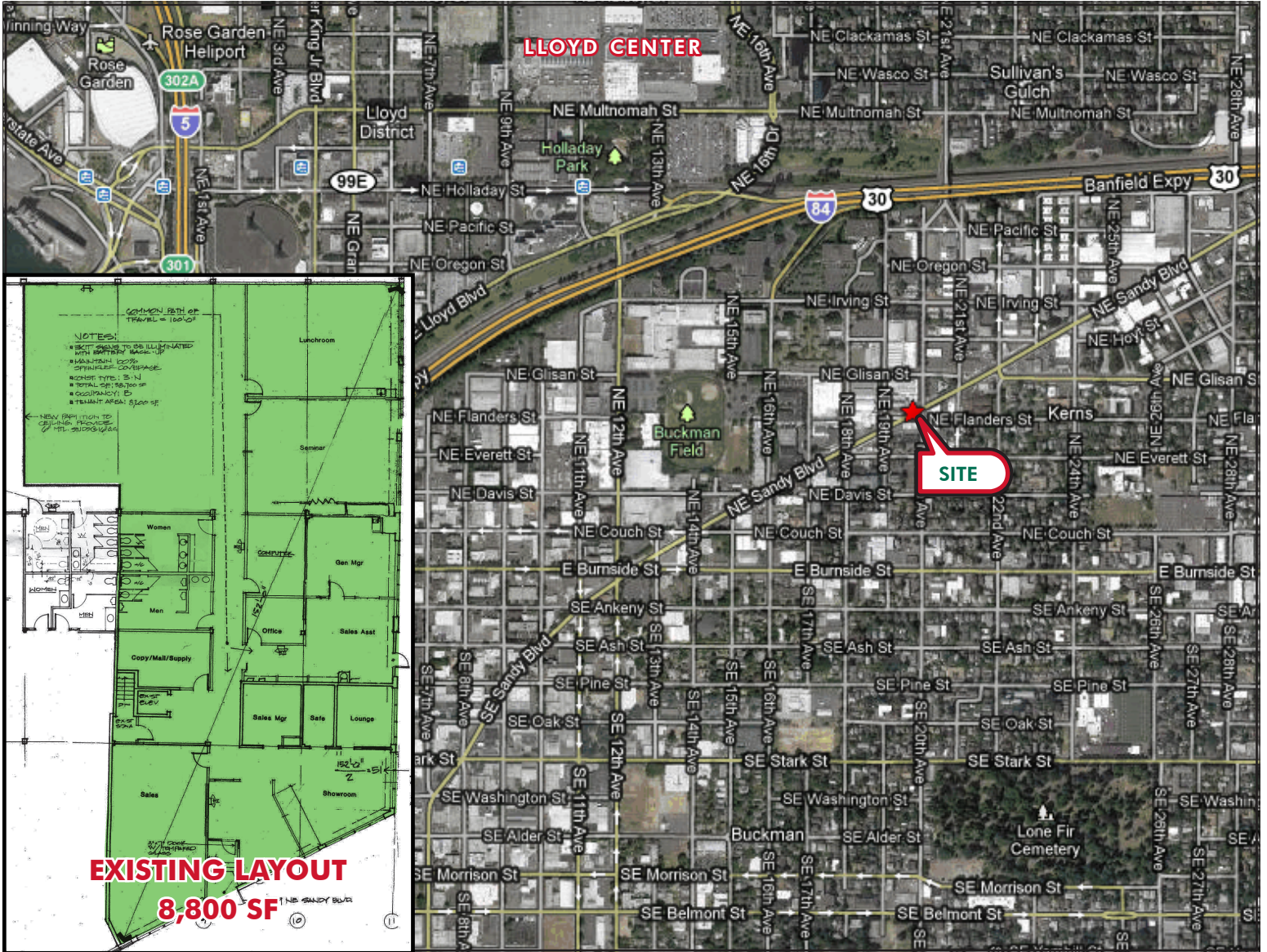
CBRE
CB RICHARD ELLIS

FOR LEASE

Retail **24/7.**

CENTRAL EASTSIDE LOCATION RETAIL SPACE/OFFICE FOR LEASE

1939 NE SANDY BLVD :: PORTLAND, OREGON 97232



FOR MORE
INFORMATION
CONTACT

Dick Loffelmacher

503.221.4882

dick.loffelmacher@cbre.com

Brandon Slater

503.221.4833

brandon.slater@cbre.com

CB Richard Ellis | 1300 SW Fifth Ave. | Suite 3000 | Portland, OR 97201 | www.cbre.com/portland

© 2010 CB Richard Ellis, Inc. This information has been obtained from sources believed reliable. We have not verified it and make no guarantee, warranty or representation about it. Any projections, opinions, assumptions or estimates used are for example only and do not represent the current or future performance of the property. You and your advisors should conduct a careful, independent investigation of the property to determine to your satisfaction the suitability of the property for your needs. CBRE, CB RICHARD ELLIS and the CBRE CB RICHARD ELLIS logo are service marks of CB Richard Ellis, Inc. and/or its affiliated or related companies in the United States and other countries. All other marks displayed on this document are the property of their respective owners.

CBRE
CB RICHARD ELLIS