



**FOR SALE  
OR LEASE**

# Avery Court Warehouse Building

20360 SW AVERY COURT, TUALATIN, OR



**SUBJECT  
PROPERTY**

**27,000** FIRST FLOOR  
SQUARE FEET

24' clear height

6 dock doors

5 grade level doors

3-phase power

**5,000** SECOND FLOOR  
SQUARE FEET

Sprinklered

Paint booth

Rent \$0.60/0.90/NNN

Sale Price: \$4,700,000

**CLIFF FINNELL, SIOR**  
503.221.2295  
[cliff.finnell@kidder.com](mailto:cliff.finnell@kidder.com)

**KIDDER.COM**

**Kidder  
Mathews**

This information supplied herein is from sources we deem reliable. It is provided without any representation, warranty, or guarantee, expressed or implied as to its accuracy. Prospective Buyer or Tenant should conduct an independent investigation and verification of all matters deemed to be material, including, but not limited to, statements of income and expenses. Consult your attorney, accountant, or other professional advisor.

FOR SALE OR LEASE

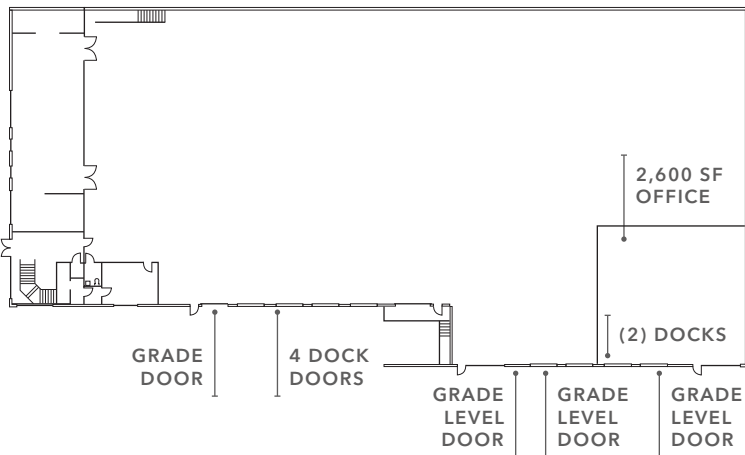
# Avery Court Warehouse Building

20360 SW AVERY COURT, TUALATIN, OR

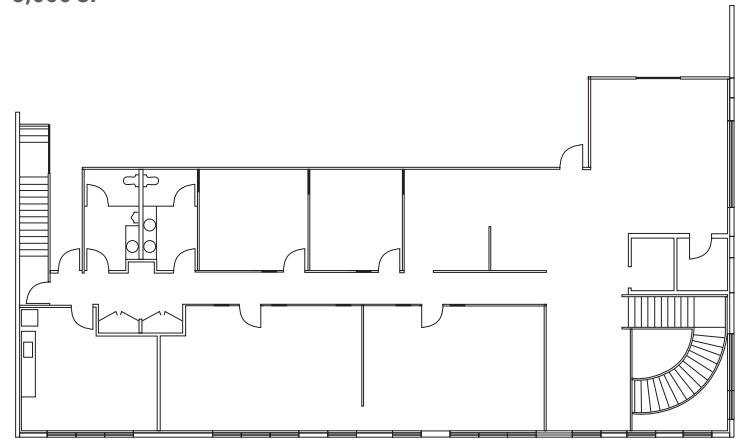


SUBJECT  
PROPERTY

WAREHOUSE FLOOR  
27,000 SF



SECOND FLOOR OFFICE SPACE  
5,000 SF



KIDDER.COM

This information supplied herein is from sources we deem reliable. It is provided without any representation, warranty, or guarantee, expressed or implied as to its accuracy. Prospective Buyer or Tenant should conduct an independent investigation and verification of all matters deemed to be material, including, but not limited to, statements of income and expenses. Consult your attorney, accountant, or other professional advisor.

**km** Kidder  
Mathews