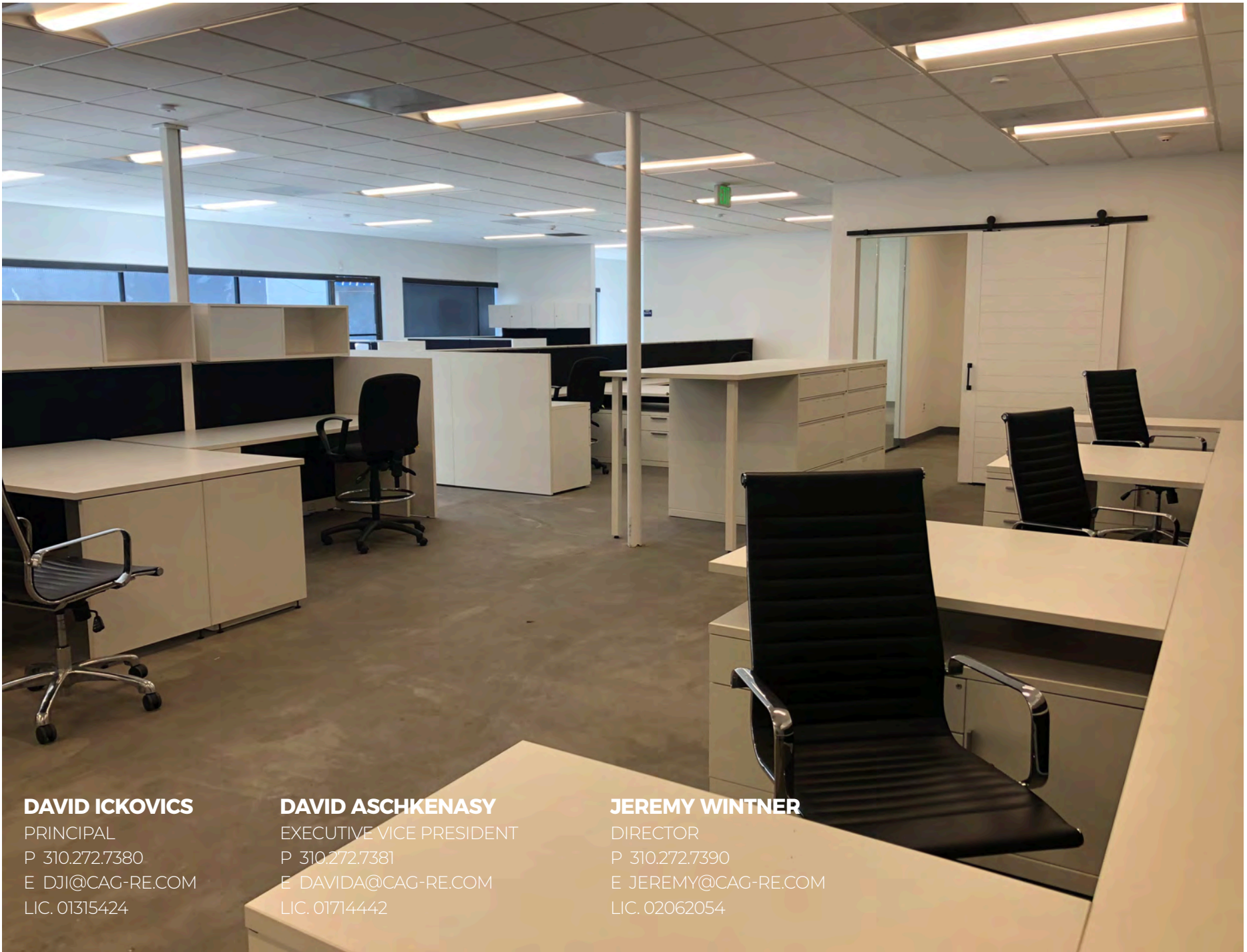


cag | COMMERCIAL
ASSET GROUP

101 JAPANESE VILLAGE PLAZA
LOS ANGELES, CA 90012



JAPANESE VILLAGE PLAZA
CREATIVE OFFICE SPACE FOR LEASE
IN THE HEART OF LITTLE TOKYO



DAVID ICKOVICS

PRINCIPAL
P 310.272.7380
E DJI@CAG-RE.COM
LIC. 01315424

DAVID ASCHKENASY

EXECUTIVE VICE PRESIDENT
P 310.272.7381
E DAVIDA@CAG-RE.COM
LIC. 01714442

JEREMY WINTNER

DIRECTOR
P 310.272.7390
E JEREMY@CAG-RE.COM
LIC. 02062054

AVAILABLE

±5,446 RSF

TIMING

IMMEDIATELY

RENTAL RATE

\$2.70 PSF
MODIFIED GROSS

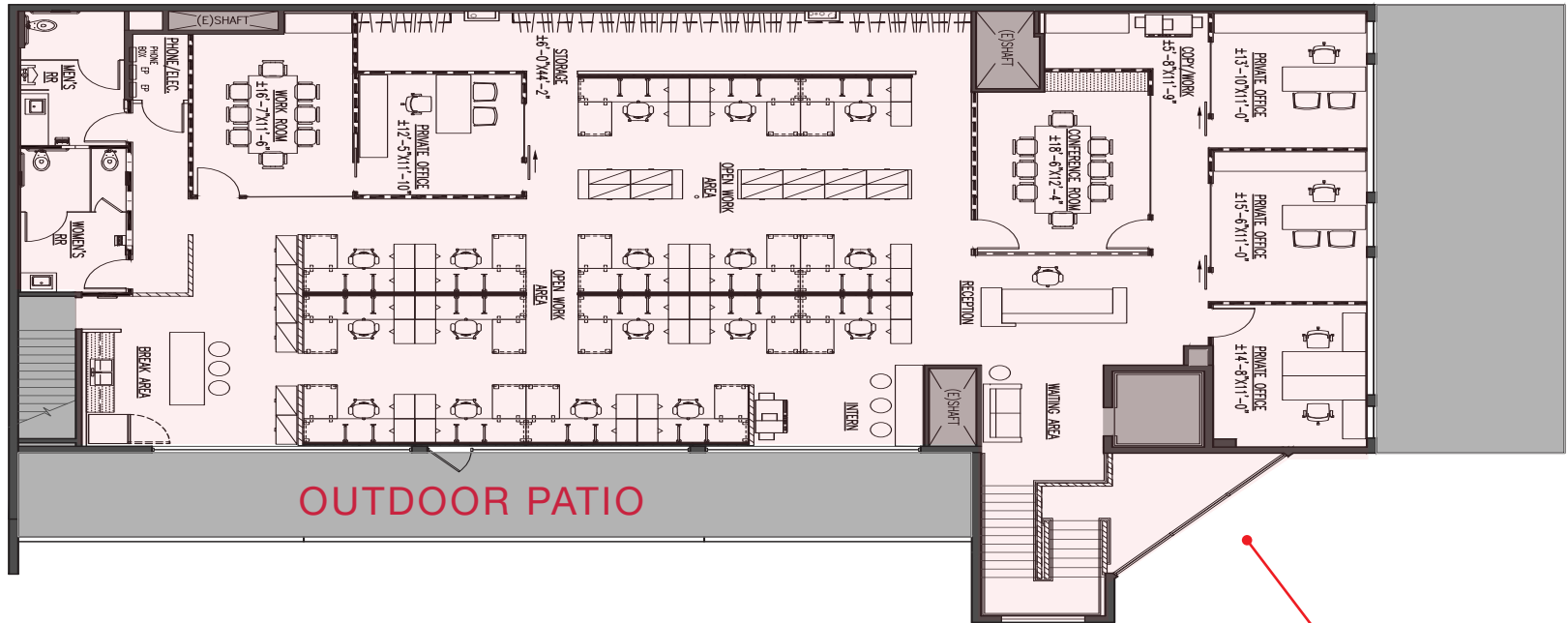
PARKING

LARGE ONSITE
PARKING
STRUCTURE

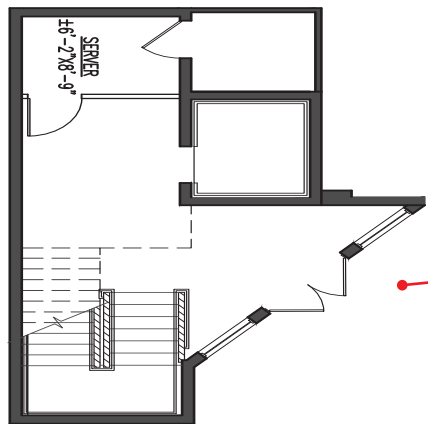
(14 SPACES @ \$125/SPACE)

These materials are based on information and content provided by others, which we believe are accurate. No guarantee, warranty or representation is made by CBRE or its affiliates. CBRE Real Estate Asset Group, Inc. or its personnel do not warrant the accuracy and completeness. As well, any projections, assumptions, opinion or estimates are used for example only, and do not represent the current or future performance of the identified property. Your tax, financial, legal and toxic substance advisors should conduct a careful investigation of the property and its suitability for your needs, including land use limitations. The property is subject to prior lease, sale, change in price, or withdrawal from the market without notice.

- **LOCATED DIRECTLY ACROSS THE STREET FROM THE NEW METRO STATION**
- NEWLY BUILT MODERN/CREATIVE SPACE WITH SEVERAL OFFICES, CONFERENCE ROOMS, KITCHEN, RESTROOMS, AND OUTDOOR PATIO
- DEDICATED GROUND FLOOR ENTRANCE WITH PRIVATE ELEVATOR AND STAIRCASE
- SITUATED IN THE HEART OF LITTLE TOKYO/DOWNTOWN LOS ANGELES
- STEPS FROM THE ENDLESS RESTAURANTS WITHIN THE PLAZA & GREATER LITTLE TOKYO
- ABUNDANT PARKING FOR GUESTS
- BELOW MARKET LOAD FACTOR



SUITE 101

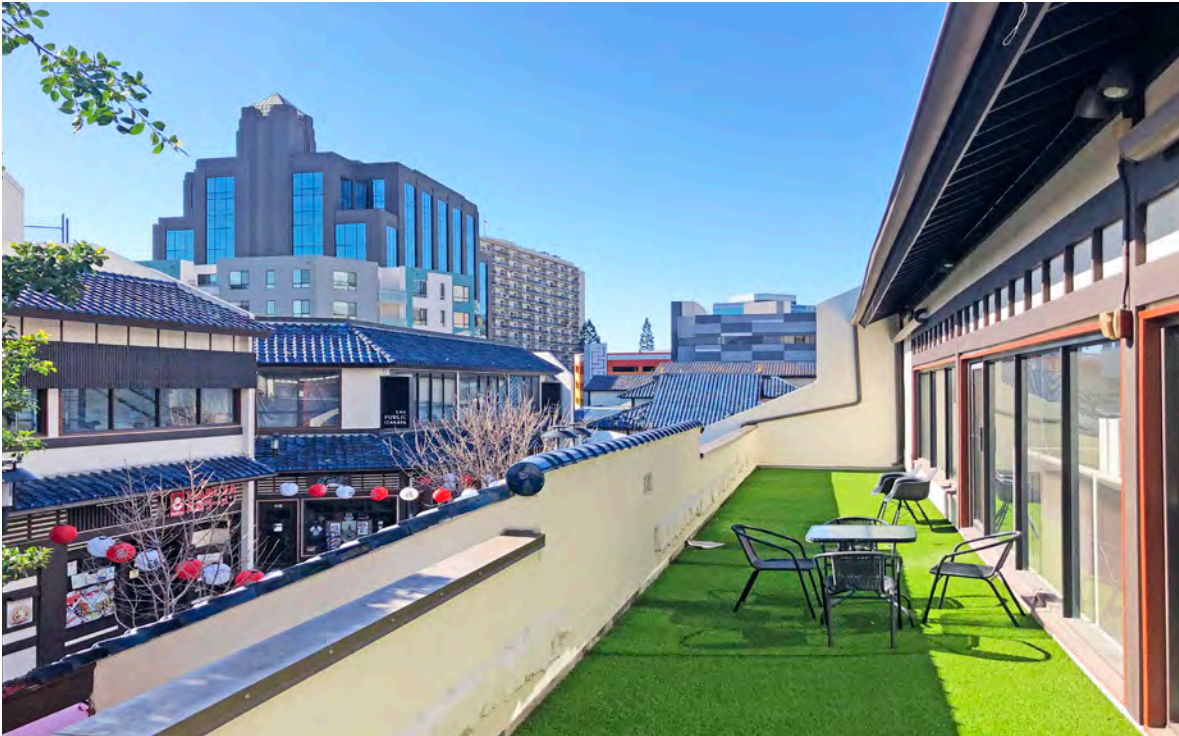
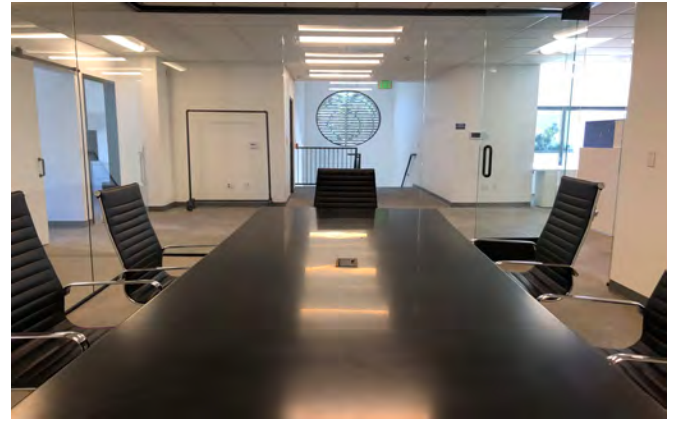


GROUND FLOOR
ENTRANCE

EXISTING SPACE PLAN



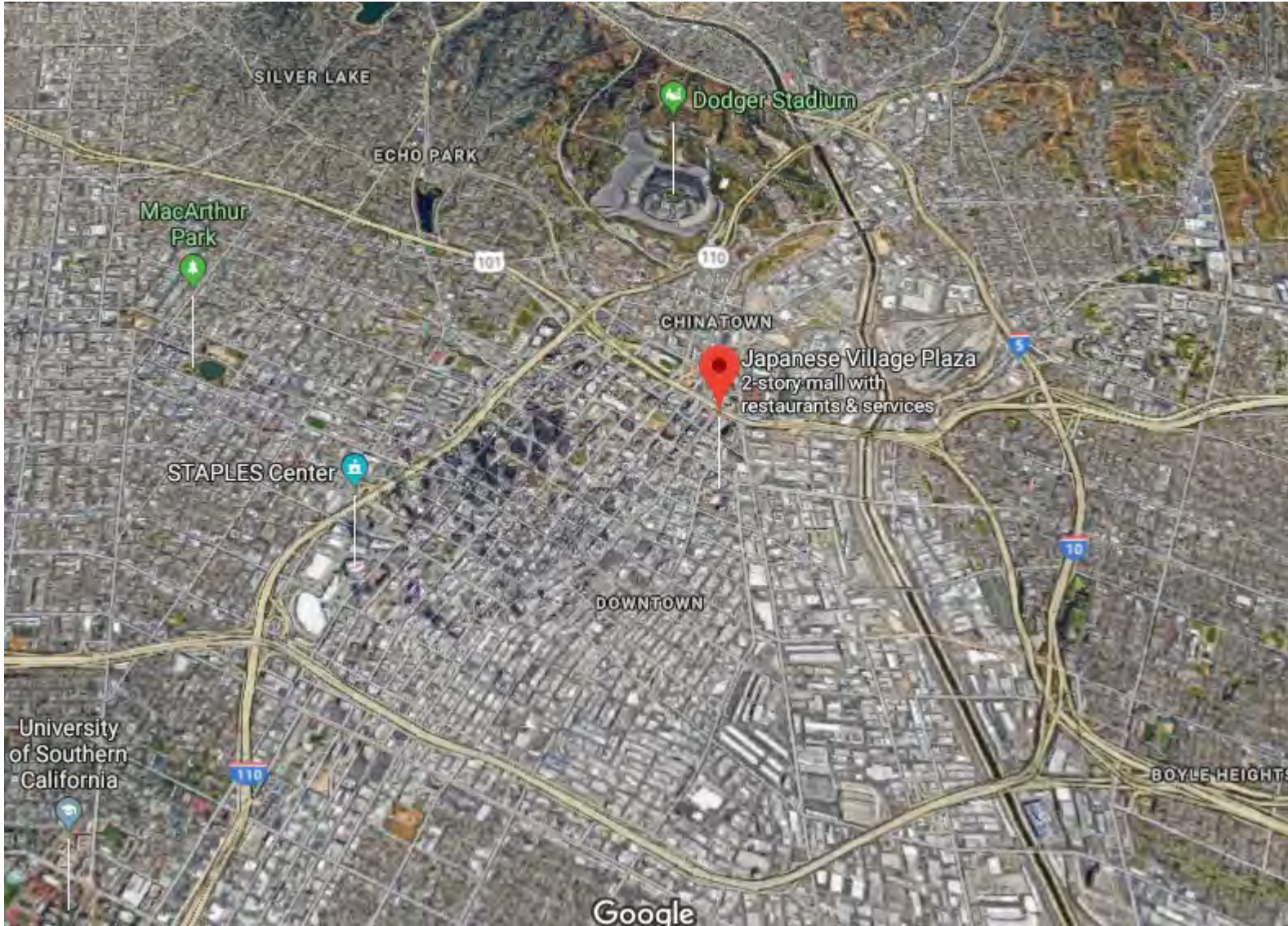
ADDITIONAL
PHOTOS



ADDITIONAL
PHOTOS



AERIAL



MAP

DAVID ICKOVICS

PRINCIPAL
P 310.272.7380
E DJI@CAG-RE.COM
LIC. 01315424

DAVID ASCHKENASY

EXECUTIVE VICE PRESIDENT
P 310.272.7381
E DAVIDA@CAG-RE.COM
LIC. 01714442

JEREMY WINTNER

DIRECTOR
P 310.272.7390
E JEREMY@CAG-RE.COM
LIC. 02062054

COMMERCIAL ASSET GROUP

1801 CENTURY PARK EAST, STE 1550
LOS ANGELES, CA 90067
P 310.275.8222 F 818.385.1470
WWW.CAG-RE.COM LIC. 01876070

