



1201 13th Street, Suites 101/102, Fairhaven WA

Ground Floor Office Space



FOR LEASE

This is a corner lot mixed-use building in the heart of the Fairhaven District. The ground floor has a total of 3 commercial condominiums on the ground floor.

Units 101/102 have 4 assigned parking spaces. Street parking has 2 hour marked limits on Mill and 13th streets.

Condo has 4 private offices, reception and waiting area are professionally designed.

Entrance to the Condo is directly off the courtyard. Access to Garage is off of 13th St.

Rentable SF:	1,116 SF
Parking	4 Covered Spaces and Street Parking Available
Base Rent:	\$20/ SF + NNN (\$6.72)
Zoning:	Mixed Use
Year Built	2006
Association Dues:	\$801/ Month

Gage Commercial Real Estate

📍 1313 E Maple St. Suite 217
Bellingham, WA

☎ (360)-483-0508

Greg Martineau, CCIM

☎ (360) 820-4645

✉ Greg@gagecre.com

Tracy Carpenter

☎ (360) 303-2608

✉ Tracy@gagecre.com

Information contained herein has been obtained from sources deemed reliable, but not guaranteed. Buyer to verify.



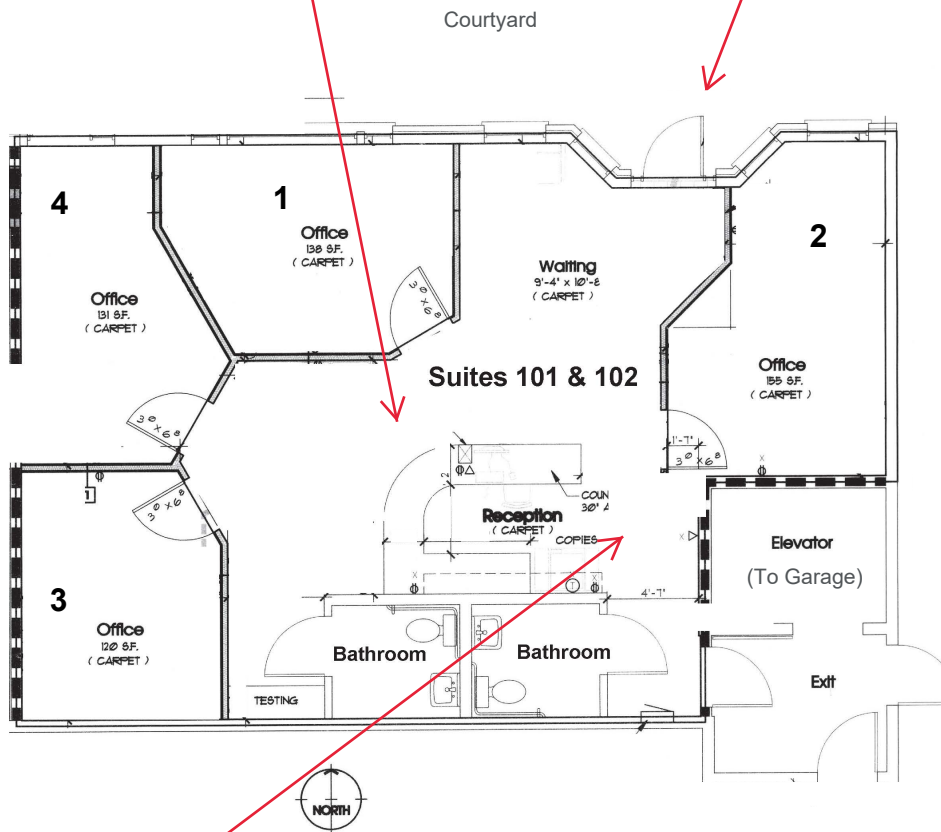
For Lease



Reception Desk
from Front



Entrance
(ADA Accessible)



Reception
from Behind
Desk



1201 13th Street, Suites 101/102, Fairhaven WA

Ground Floor Office Space

Waiting Room



(1) Office Facing Street



(2) Northeast Corner Office



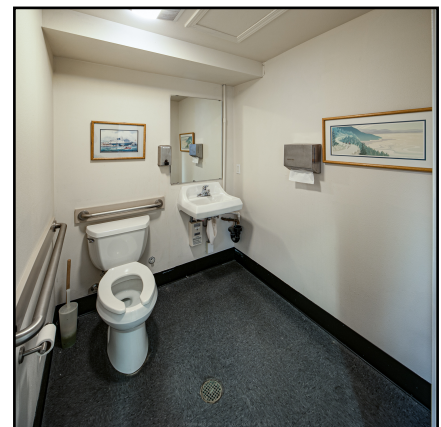
(3) Open Office Space/ Conference Room



(4) Northwest Corner Office



Bathroom



Gage Commercial Real Estate

📍 1313 E Maple St. Suite 217
Bellingham, WA

☎ (360)-483-0508

Greg Martineau, CCIM

☎ (360) 820-4645

✉ Greg@gagecre.com

Tracy Carpenter

☎ (360) 303-2608

✉ Tracy@gagecre.com

Information contained herein has been obtained from sources deemed reliable, but not guaranteed. Buyer to verify.