

# 1600 WALNUT STREET

OFFICE SPACE FOR LEASE  
FULL 2ND FLOOR - 5,200 SF  
\$25.00/SF + ELECTRIC  
AVAILABLE Q3, 2018

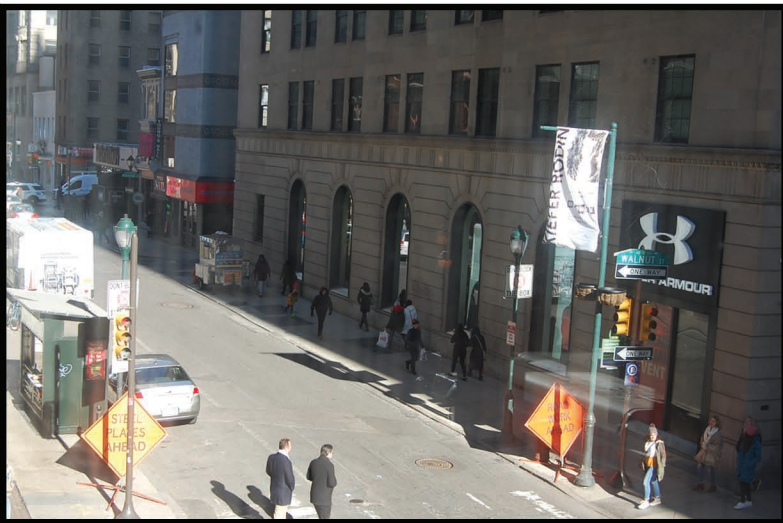
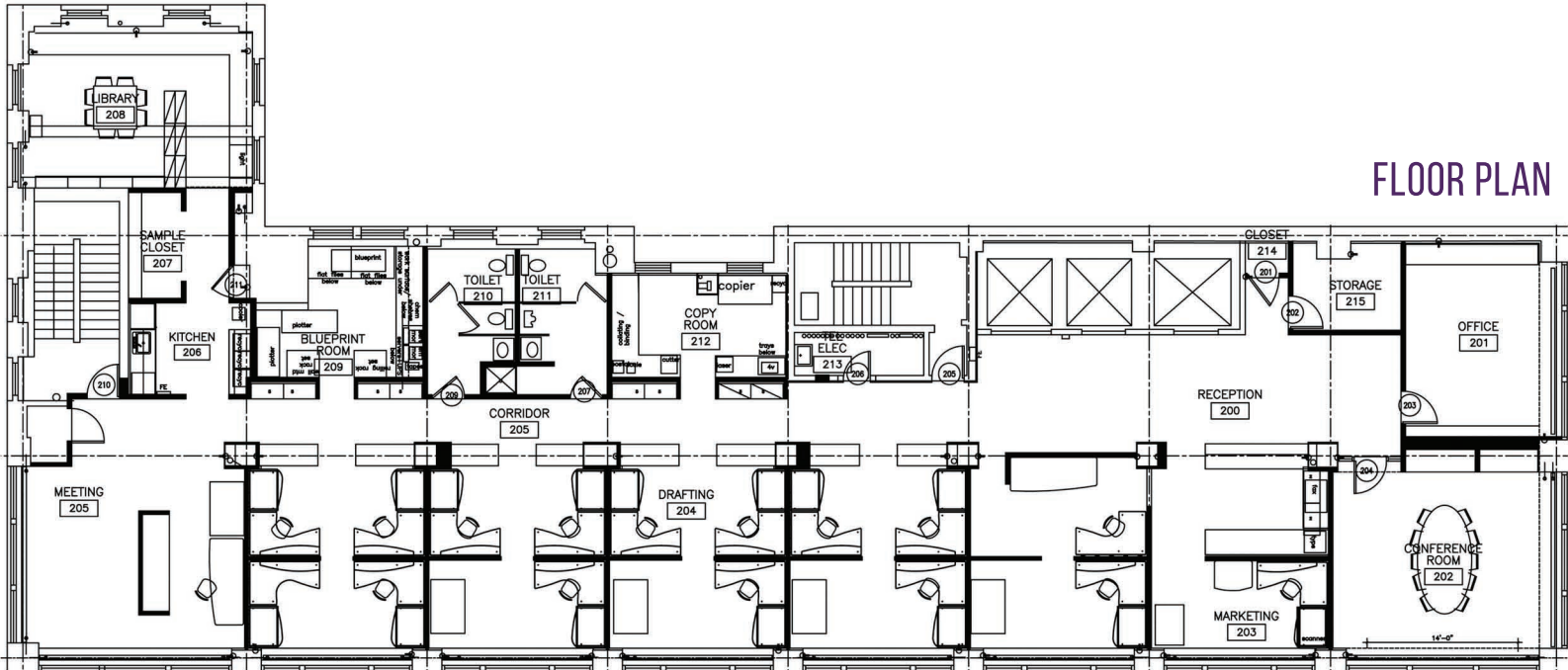


PERNAFREDERICK  
COMMERCIAL REAL ESTATE

CONTACT: DANIEL GUMMEL  
215-496-9675 X117  
DG@PERNAFREDERICK.COM

# 1600 WALNUT STREET

## FLOOR PLAN



INCREDIBLE STREETScape VIEWS!



BUILDING LOBBY



PERNAFREDERICK  
COMMERCIAL REAL ESTATE

CONTACT: DANIEL GUMMEL  
215-496-9675 X117  
DG@PERNAFREDERICK.COM