



Honoring the past. Imagining the future.



Honoring the past. Imagining the future.

Constructed in 1925 by renowned Seattle architect J. Lister Holmes, the Dunn Motors Building was a major presence in Seattle's "auto row" for more than three decades. First occupied by Dunn Motors Inc., the building served as home to more than a dozen auto dealerships. Now, with a new

phase of construction this beautiful building has been reimagined for modern life, allowing it to once again act as a central figure in one of Seattle's busiest and most vibrant neighborhoods—Capitol Hill.





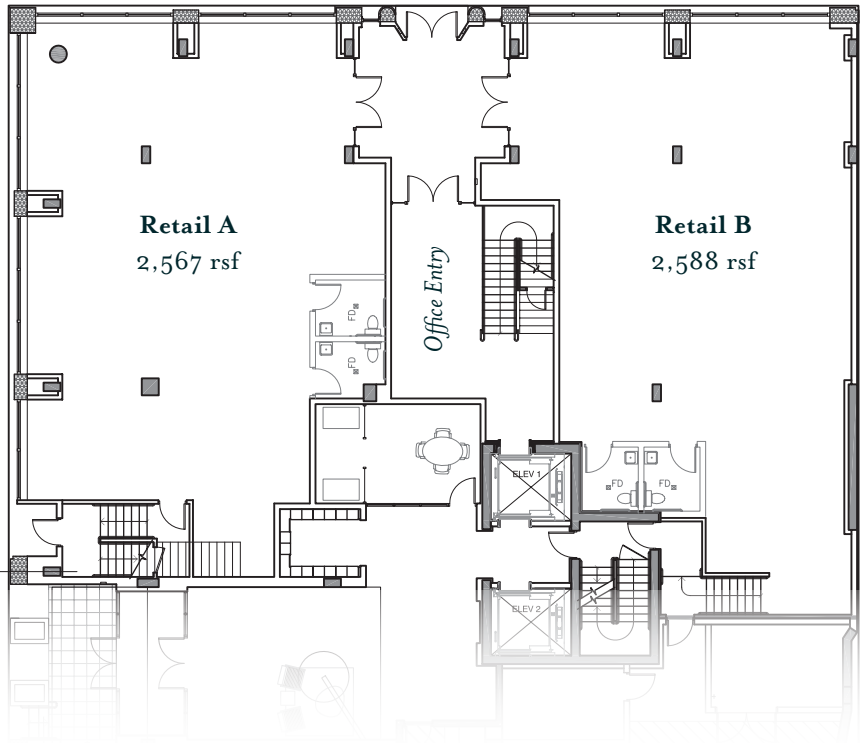
Retail Availability

Unlike many of the other new buildings popping up in the area, the first floor retail space of The Dunn Motors Building embraces the original 1920s architecture style. Wooden structures and window frames recreate the warmth of the original building, bringing the heart and soul of this historic property directly to the forefront.

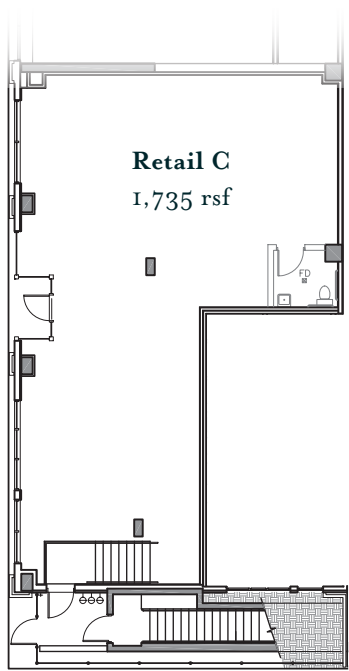


E. PIKE ST.

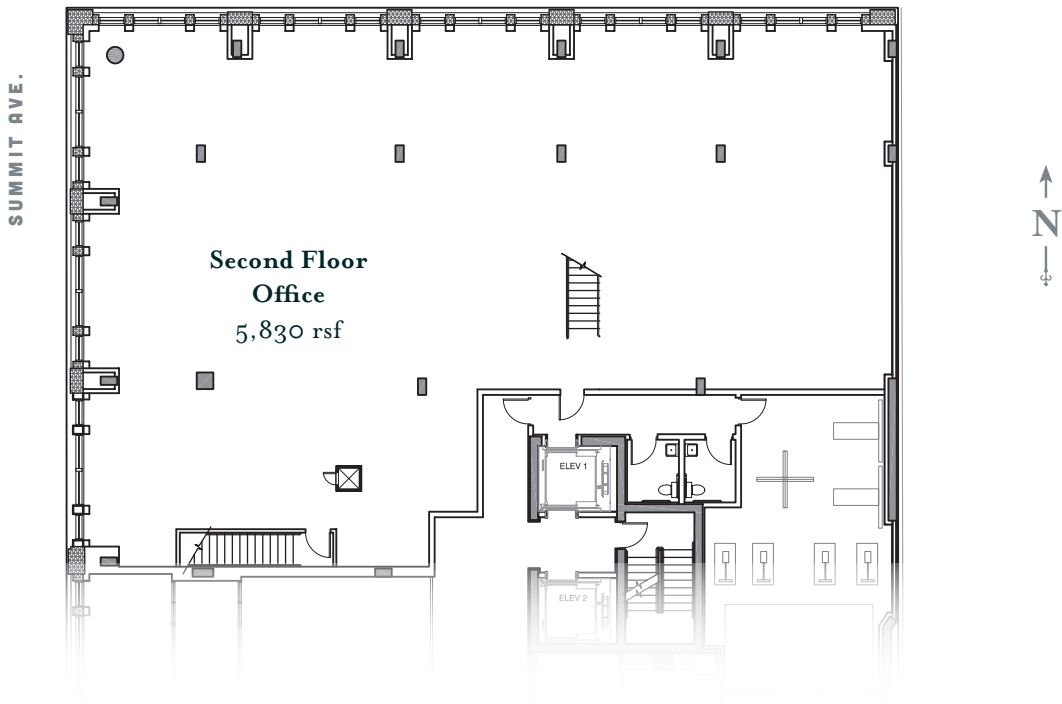
SUMMIT AVE.



Floor 1



E. PIKE ST.



**Second Floor
Office**
5,830 rsf

Office Availability

Like the first floor retail space, the 6,000 square feet of second floor office space pays homage to the original structure. By borrowing the style of the 1920s to create a refined, tasteful atmosphere, these offices give the tenant the sense of inhabiting a place with a rich and exciting history, while also offering all the amenities of a newly constructed building.

Availability Details

| SPACE | SIZE | RATE |
|----------|-----------|----------|
| Retail A | 2,567 rsf | \$37 NNN |
| Retail B | 2,588 rsf | \$33 NNN |
| Retail C | 1,735 rsf | \$30 NNN |
| Office | 5,830 rsf | \$28 NNN |



For more information please contact:

Hunters Capital Real Estate

Jill Cronauer : jill@hunterscapital.com • 206-328-3333