

13825-13837 W 135TH ST

OLATHE, KS 66062



HIGHLIGHTS

- 25,851 SF Pad Site Available For Sale - Build Ready
- Owner will Build-to-Suit Lease
- Available For Occupancy January 2020
- Building For Lease - 1,000 SF- 4,833.5 SF Available
- Great Location on 135th St, Next to Menards

FOR SALE - PAD SITE

\$18.00/SF

FOR LEASE - RETAIL

\$23.00/SF NNN

DEMOGRAPHICS

	1 Mile	3 Mile	5 Mile
2018 POPULATION	10,848	98,861	223,269
2018 MED HOUSEHOLD INCOME	\$116,481	\$88,404	\$86,089

Jim Thome

Office: 913.548.8700

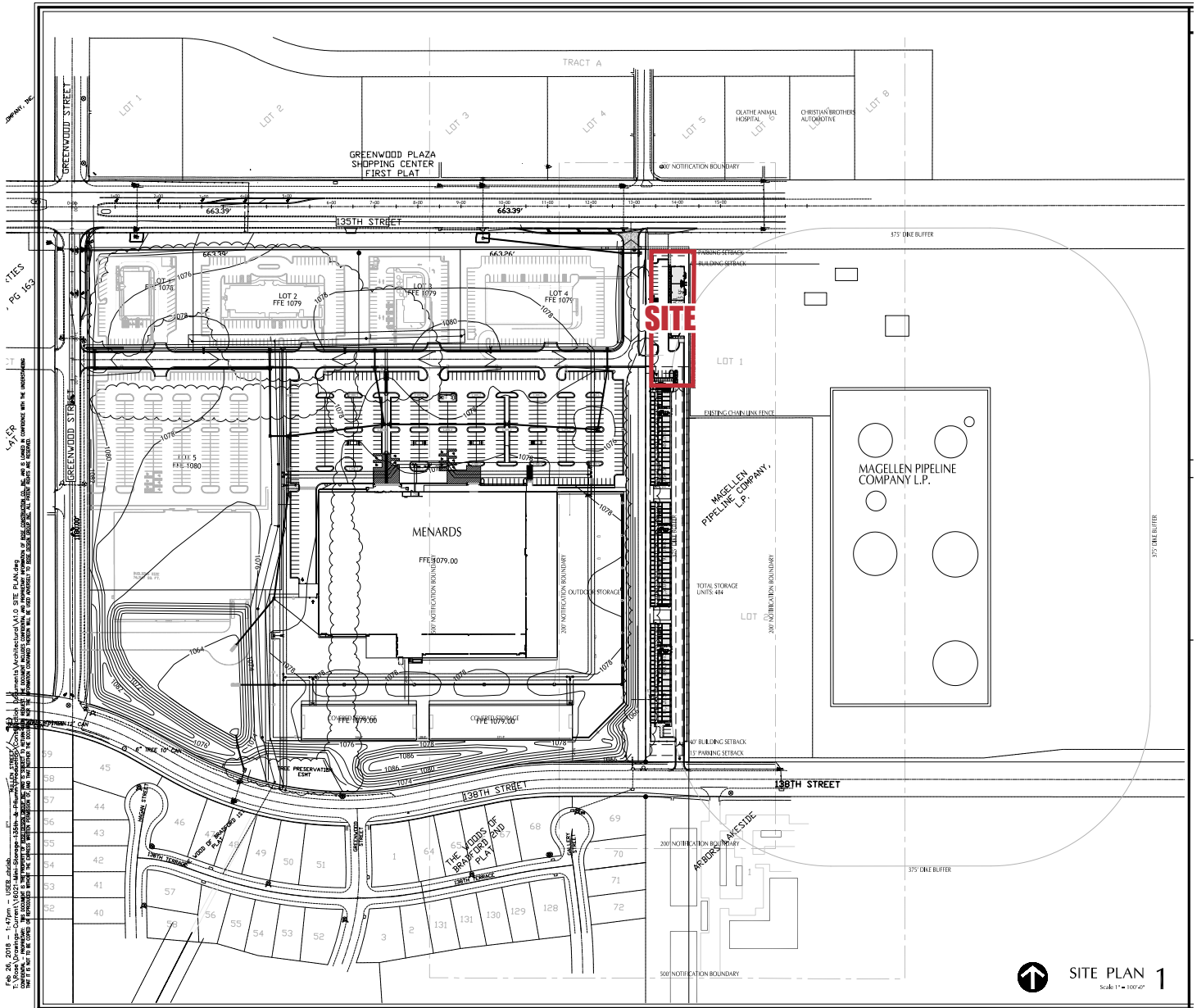
Fax: 913.981.9082

Email: jimthome@reececommercial.com

The information above has been obtained from sources believed reliable. While we do not doubt its accuracy we have not verified it and make no guarantee, warranty or representation about it. It is your responsibility to independently confirm its accuracy and completeness. Any projections, opinions, assumptions, or estimates used are for example only and do not represent the current or future performance of the property. You and your advisors should conduct a careful, independent investigation of the property to determine to your satisfaction the suitability of the property for your needs. © 2018

SITE PLAN

13825,13829, 13833, 13837 W 135TH ST, OLATHE, KS 66062



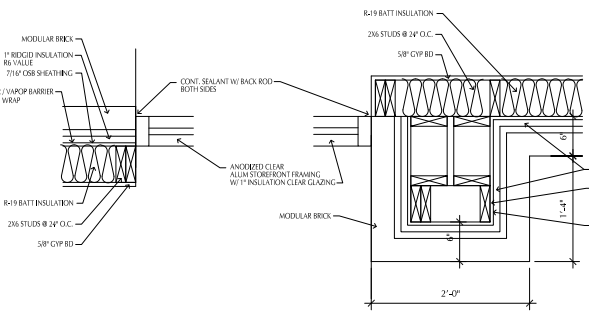
↑ **SITE PLAN 1**
 Scale 1" = 100'

Jim Thome
 Office: 913.548.8700
 Fax: 913.981.9082
 Email: jimthome@reececommercial.com

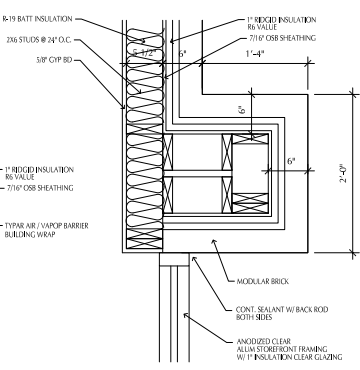
The information above has been obtained from sources believed reliable. While we do not doubt its accuracy we have not verified it and make no guarantee, warranty or representation about it. It is your responsibility to independently confirm its accuracy and completeness. Any projections, opinions, assumptions, or estimates used are for example only and do not represent the current or future performance of the property. You and your advisors should conduct a careful, independent investigation of the property to determine to your satisfaction the suitability of the property for your needs. © 2018

FLOOR PLANS

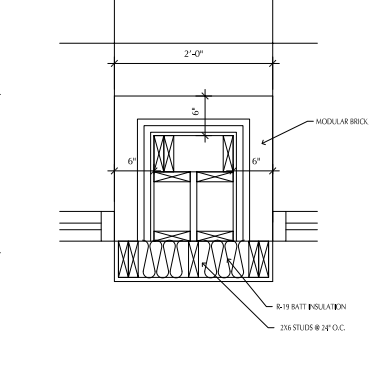
13825, 13829, 13833, 13837 W 135TH ST, OLATHE, KS 66062



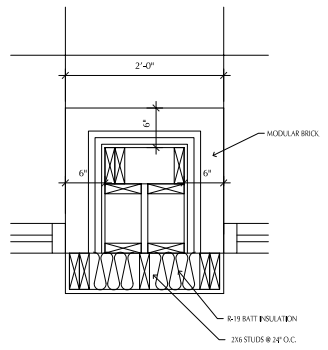
FLOOR PLAN DETAIL 6
Scale: 1/16" = 1'-0"



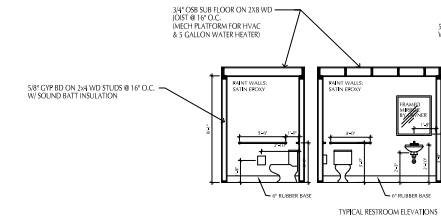
FLOOR PLAN DETAIL 5
Scale: 1/16" = 1'-0"



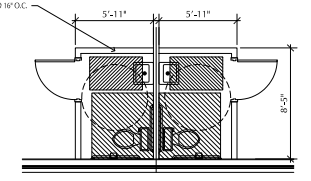
FLOOR PLAN DETAIL 4
Scale: 1/16" = 1'-0"



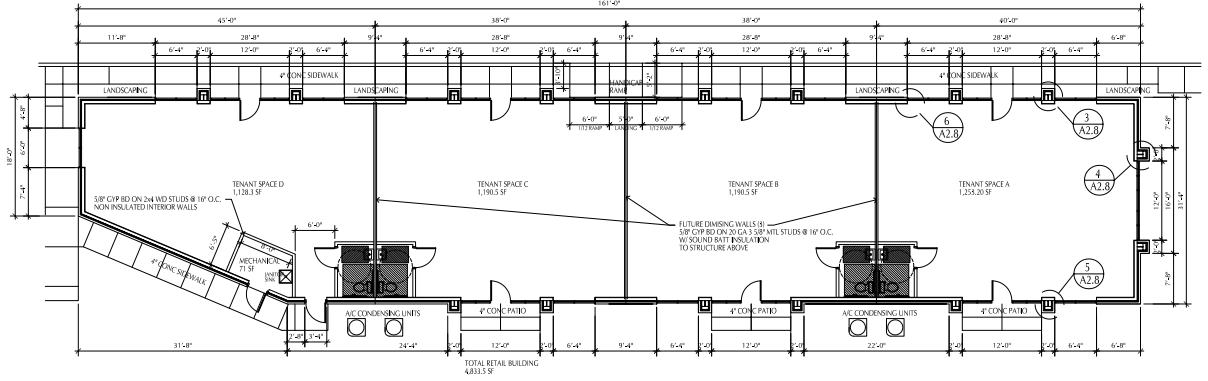
FLOOR PLAN DETAIL 3
Scale: 1/16" = 1'-0"



TYPICAL RESTROOM ELEVATIONS



ENLARGED FLOOR PLAN 2
Scale: 1/8" = 1'-0"



FLOOR PLAN 1
Scale: 1/8" = 1'-0"

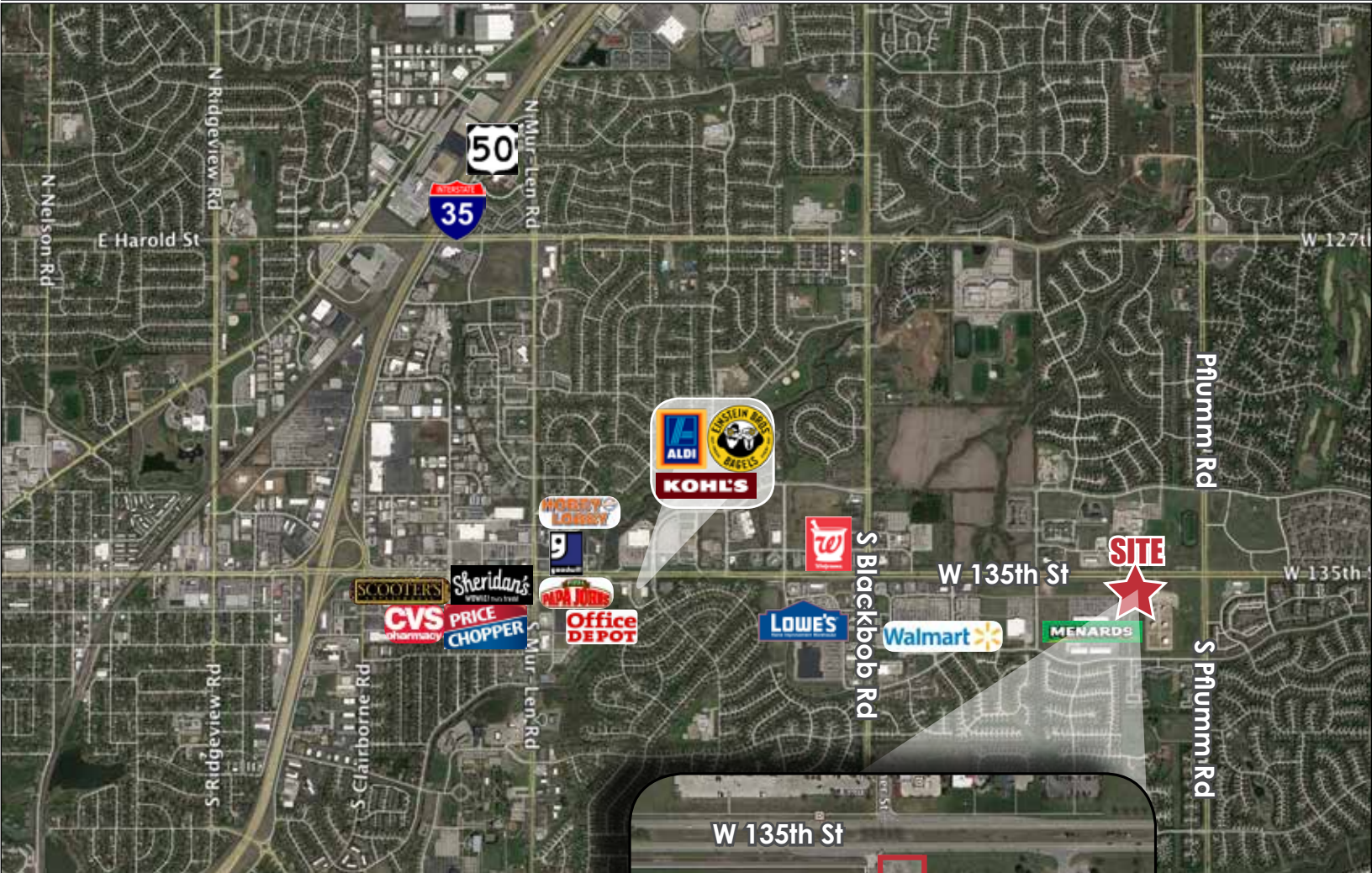
Apr 20, 2018 - 8:33am - USER: chde
 T:\Voss\Drawings-Corinn\13829 Retail Floor Plans\FLOOR PLANS.dwg
 User: chde, Date: 4/20/2018, Time: 8:33:00 AM
 This drawing was created by the company and should not be disseminated outside of the company without the written permission of the company.

Jim Thome
 Office: 913.548.8700
 Fax: 913.981.9082
 Email: jimthome@reececommercial.com

The information above has been obtained from sources believed reliable. While we do not doubt its accuracy we have not verified it and make no guarantee, warranty or representation about it. It is your responsibility to independently confirm its accuracy and completeness. Any projections, opinions, assumptions, or estimates used are for example only and do not represent the current or future performance of the property. You and your advisors should conduct a careful, independent investigation of the property to determine to your satisfaction the suitability of the property for your needs. © 2018

AERIALS

13825,13829, 13833, 13837 W 135TH ST, OLATHE, KS 66062



Jim Thome

Office: 913.548.8700

Fax: 913.981.9082

Email: jimthome@reececommercial.com