

BUTLER POINTE

4500 SALISBURY ROAD, JACKSONVILLE, FL, 32216

OFFICE SUITES
FOR LEASE



- Landmark Southpoint building that is highly visible from JTB and I-95
- Five story atrium with water features & lush indoor landscape
- On-site restaurant
- Key card after hours access
- Ample parking
- Full-Service leases (utilities and janitorial included)
- Suites sizes ranging from 1,400 to 9,420 RSF available
- Atrium Suites with expansive lobby views.
- Spaces can be combined to create larger suites.
- Under new ownership and management

Joe Scavetto, VP Brokerage
Phone: (904) 424-9000
js@naihallmark.com

NAI Hallmark

www.naihallmark.com

6675 Corporate Center Parkway, Suite 100
Jacksonville, FL 32216 • (904) 363-9002

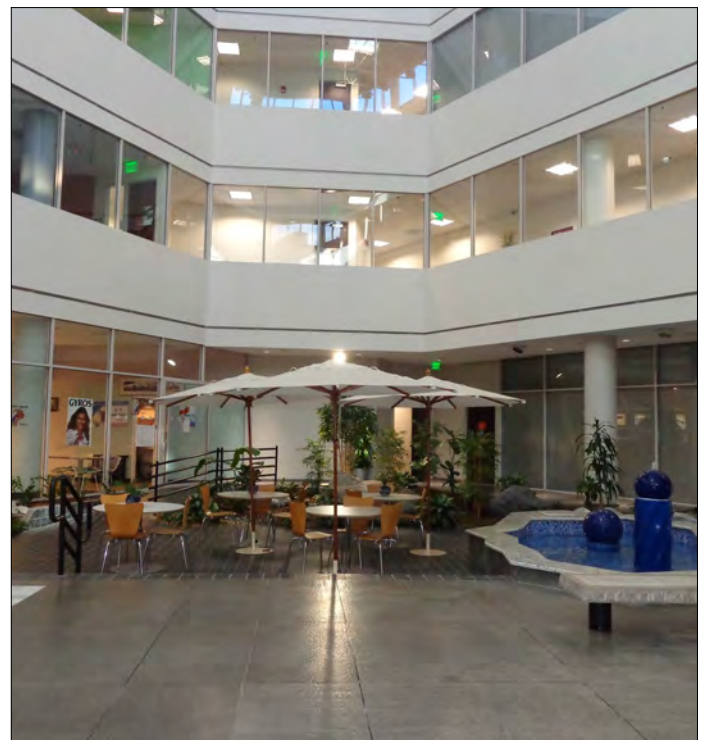
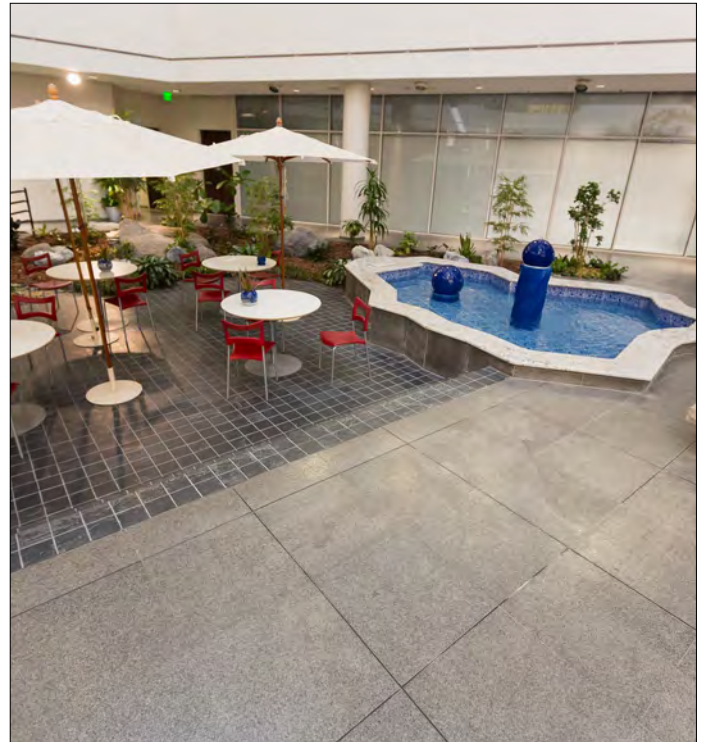
The information contained herein was obtained from reliable sources and is believed to be correct. However, all information presented should be verified as it is subject to errors and omissions. Property may be withdrawn from the market at any time without further notice. Copyright © 2017 NAI Hallmark, LLC.

Last Updated: May 29, 2018

BUTLER POINTE

4500 SALISBURY ROAD, JACKSONVILLE, FL, 32216

PROPERTY
PHOTOS



Joe Scavetto, VP Brokerage
Phone: (904) 424-9000
js@naihallmark.com

NAI Hallmark

www.naihallmark.com

6675 Corporate Center Parkway, Suite 100
Jacksonville, FL 32216 • (904) 363-9002

The information contained herein was obtained from reliable sources and is believed to be correct. However, all information presented should be verified as it is subject to errors and omissions. Property may be withdrawn from the market at any time without further notice. Copyright © 2017 NAI Hallmark, LLC.

Last Updated: May 29, 2018

BUTLER POINTE

4500 SALISBURY ROAD, JACKSONVILLE, FL, 32216

OFFICE SUITES
FOR LEASE

Suite		Rentable Square Feet	Asking Rate (Full Service)
180	Efficient suite off the main lobby with a glass entryway	521	\$22.00
430	Double full glass doors on the elevator lobby. Laminate wood flooring in reception and suite hallway. Possibility of leasing with existing furniture.	2,350	\$20.50
440	Upscale reception with windowed conference rooms, with suite entry right on the elevator lobby. Existing break room.	3,803	\$20.50
470	Open office area with expansive windowed walls overlooking the building atrium. .	3,755	\$16.75
480	Completely open "box" with lots of configuration potential. Would be a good open collaborative space, or could build out offices along the window line.	1,473	\$21.00
500	Leased but not occupied space. Will be vacant February 2019, but potentially available sooner.	17,799	\$20.50
501	Open office area with expansive windowed walls overlooking the building atrium. Possibility of adding in-suite rest room.	1,661	\$16.75
510	Excellent view. Entry right on elevator lobby.	4,526	\$20.50
520	Excellent view. Compartmentalized,. Can be leased as smaller suites.	2,676	\$20.50

Joe Scavetto, VP Brokerage
Phone: (904) 424-9000
js@naihallmark.com



www.naihallmark.com

6675 Corporate Center Parkway, Suite 100
Jacksonville, FL 32216 • (904) 363-9002

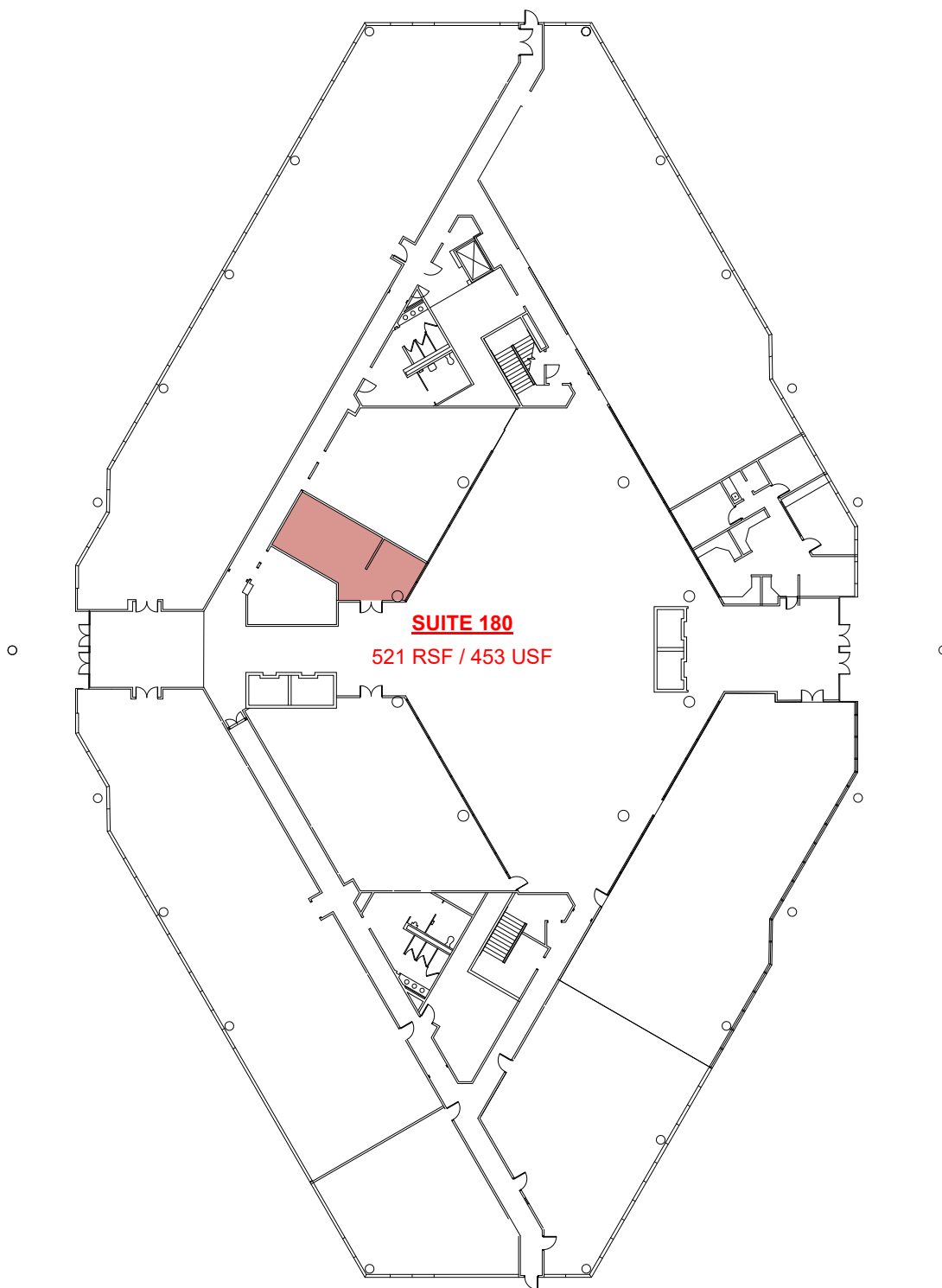
The information contained herein was obtained from reliable sources and is believed to be correct. However, all information presented should be verified as it is subject to errors and omissions. Property may be withdrawn from the market at any time without further notice. Copyright © 2017 NAI Hallmark, LLC.

Last Updated: May 29, 2018

BUTLER POINTE

4500 SALISBURY ROAD, JACKSONVILLE, FL, 32216

FIRST
FLOOR



Joe Scavetto, VP Brokerage
Phone: (904) 424-9000
js@naihallmark.com

NAI Hallmark

www.naihallmark.com

6675 Corporate Center Parkway, Suite 100
Jacksonville, FL 32216 • (904) 363-9002

The information contained herein was obtained from reliable sources and is believed to be correct. However, all information presented should be verified as it is subject to errors and omissions. Property may be withdrawn from the market at any time without further notice. Copyright © 2017 NAI Hallmark, LLC.

Last Updated: May 29, 2018

BUTLER POINTE

4500 SALISBURY ROAD, JACKSONVILLE, FL, 32216

FOURTH
FLOOR



Joe Scavetto, VP Brokerage
Phone: (904) 424-9000
js@naihallmark.com

NAI Hallmark

www.naihallmark.com

6675 Corporate Center Parkway, Suite 100
Jacksonville, FL 32216 • (904) 363-9002

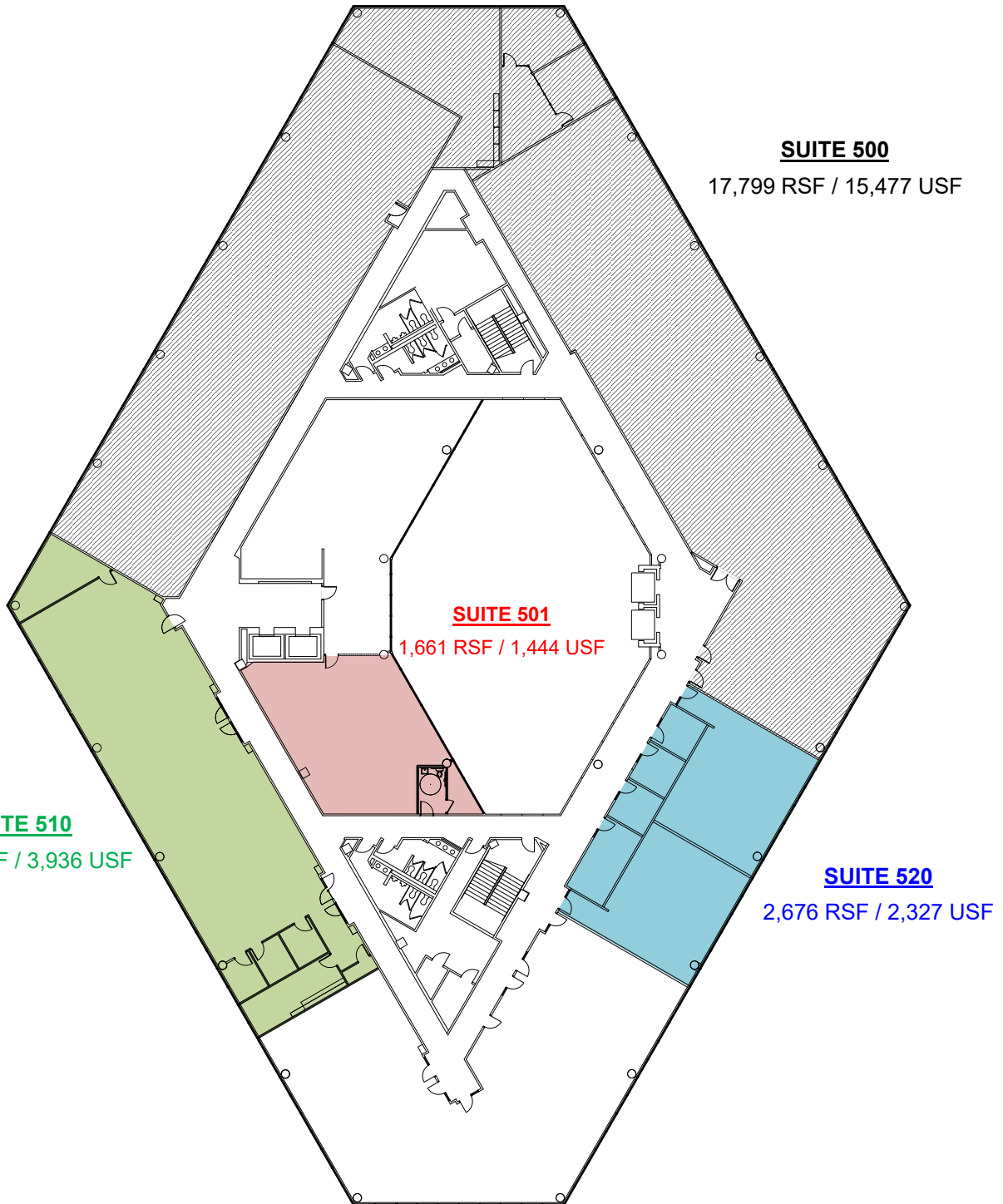
The information contained herein was obtained from reliable sources and is believed to be correct. However, all information presented should be verified as it is subject to errors and omissions. Property may be withdrawn from the market at any time without further notice. Copyright © 2017 NAI Hallmark, LLC.

Last Updated: May 29, 2018

BUTLER POINTE

4500 SALISBURY ROAD, JACKSONVILLE, FL, 32216

FIFTH
FLOOR



Joe Scavetto, VP Brokerage
Phone: (904) 424-9000
js@naihallmark.com



www.naihallmark.com

6675 Corporate Center Parkway, Suite 100
Jacksonville, FL 32216 • (904) 363-9002

The information contained herein was obtained from reliable sources and is believed to be correct. However, all information presented should be verified as it is subject to errors and omissions. Property may be withdrawn from the market at any time without further notice. Copyright © 2017 NAI Hallmark, LLC.

Last Updated: May 29, 2018

BUTLER POINTE

4500 SALISBURY ROAD, JACKSONVILLE, FL, 32216

AERIAL
MAP



Joe Scavetto, VP Brokerage
Phone: (904) 424-9000
js@naihallmark.com

NAI Hallmark

www.naihallmark.com

6675 Corporate Center Parkway, Suite 100
Jacksonville, FL 32216 • (904) 363-9002

The information contained herein was obtained from reliable sources and is believed to be correct. However, all information presented should be verified as it is subject to errors and omissions. Property may be withdrawn from the market at any time without further notice. Copyright © 2017 NAI Hallmark, LLC.

Last Updated: May 29, 2018