

Edgewood Commercial

10201 29th Street East, Edgewood, WA



FOR SALE

1.38 Acres of Land in Edgewood, Washington

Brandon Gates
253.722.1429
bgates@kiddermathews.com

kiddermathews.com

km Kidder
Mathews

Edgewood Commercial

10201 29th Street East, Edgewood, WA

Features

PROPERTY TYPE Retail | Office | Mixed Use

ZONING MUR

LOT SIZE 1.38 acres

PARCEL NO. 3625000372

SALE PRICE \$650,000

PRICE PER SF \$10.81 PSF

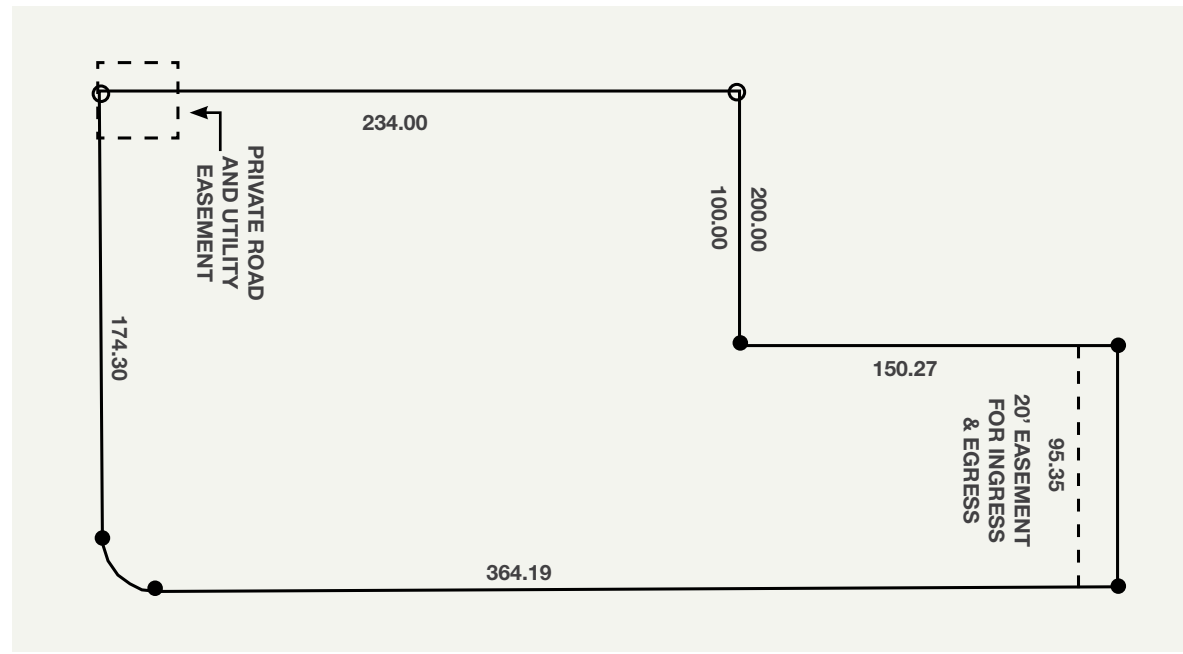
UTILITIES All utilities in street

TRAFFIC COUNT 17,000 CPD

DEMOGRAPHICS 3 mile population: 42,741
Average HH income: \$58,150

UNITS 10-24 units per acre for single use project
48 units per acre for mixed use project

MARKET HIGHLIGHTS MUR zoning allows for many retail, office and residential uses. Some of the uses include day care, drive thru, professional office, medical and multi family



Brandon Gates

253.722.1429

bgates@kiddermathews.com

kiddermathews.com



This information supplied herein is from sources we deem reliable. It is provided without any representation, warranty or guarantee, expressed or implied as to its accuracy. Prospective Buyer or Tenant should conduct an independent investigation and verification of all matters deemed to be material, including, but not limited to, statements of income and expenses. Consult your attorney, accountant, or other professional advisor.