

MEDICAL OFFICE SPACE FOR LEASE

MAINLAND MEDICAL PLAZA

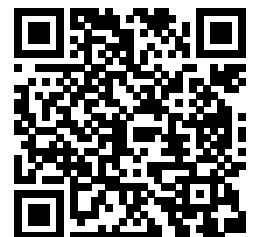
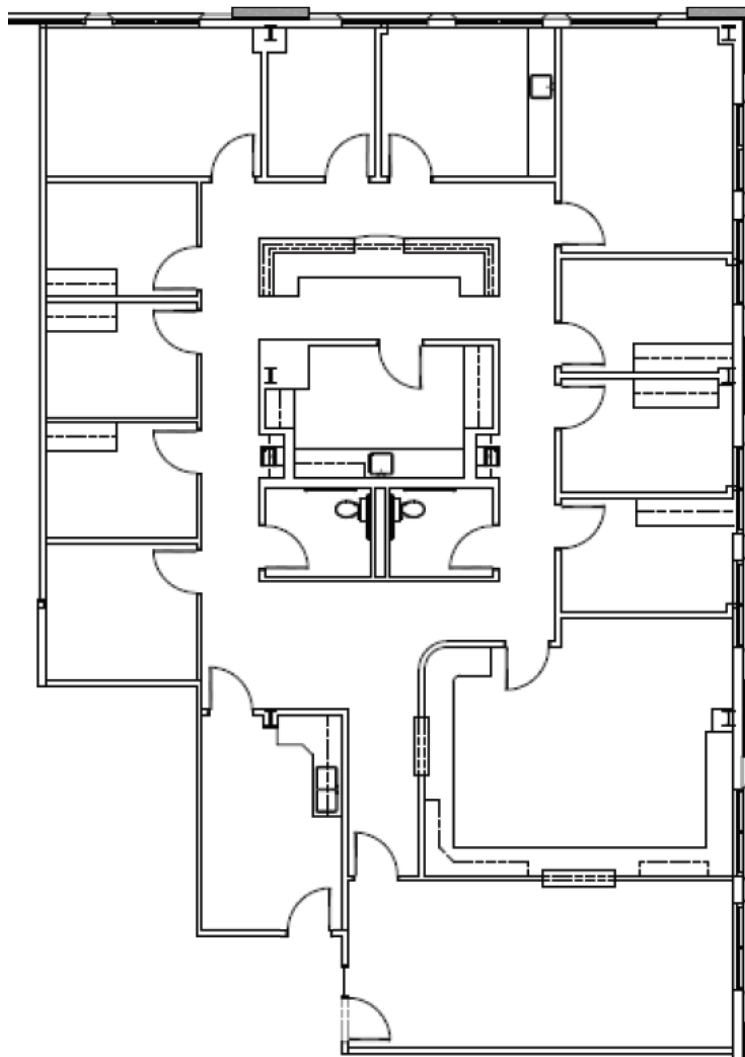
6807 EMMETT F. LOWRY EXPWY | TEXAS CITY, TEXAS 77591

1900 West Loop S
Suite 1300
Houston, TX 77027

T 713.270.7700
F 713.270.6285
transwestern.com

FLOOR PLAN

SUITE 310: 3,511 SF



CONTACT

ASHLEY CASSEL, SVP

713.490.3785

ashley.cassel@transwestern.com

DANIELLE LANZA, ASSOCIATE

713.231.1605

danielle.lanza@transwestern.com

The information provided herein was obtained from sources believed reliable; however, Transwestern makes no guarantees, warranties or representations as to the completeness or accuracy thereof. The presentation of this property is submitted subject to errors, omissions, change of price or conditions, prior sale or lease, or withdrawal without notice. Copyright © 2018 Transwestern.