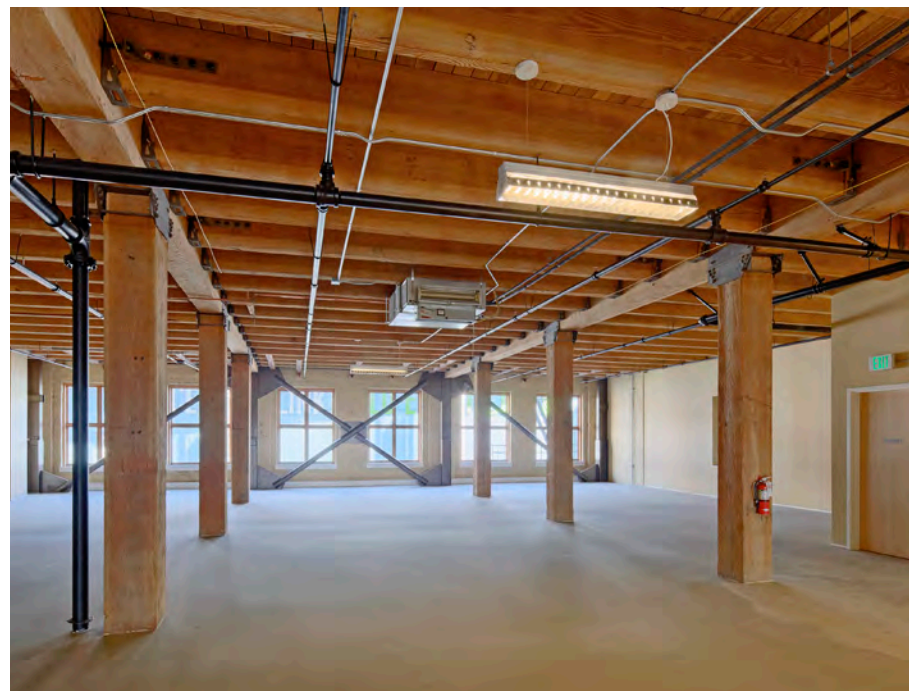


OLYMPIC REPROGRAPHICS BUILDING

CBRE



Property HIGHLIGHTS



Excellent
natural light



Unmatched access to I-5,
I-90 and mass transit



Fantastic brick and
beam tech space

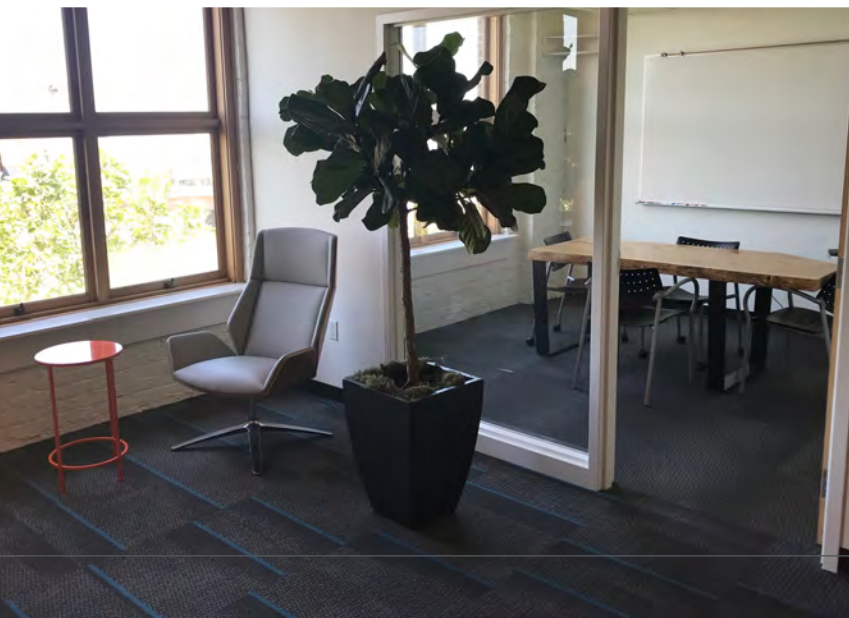


Abundant
parking available





OPEN TECH SPACE

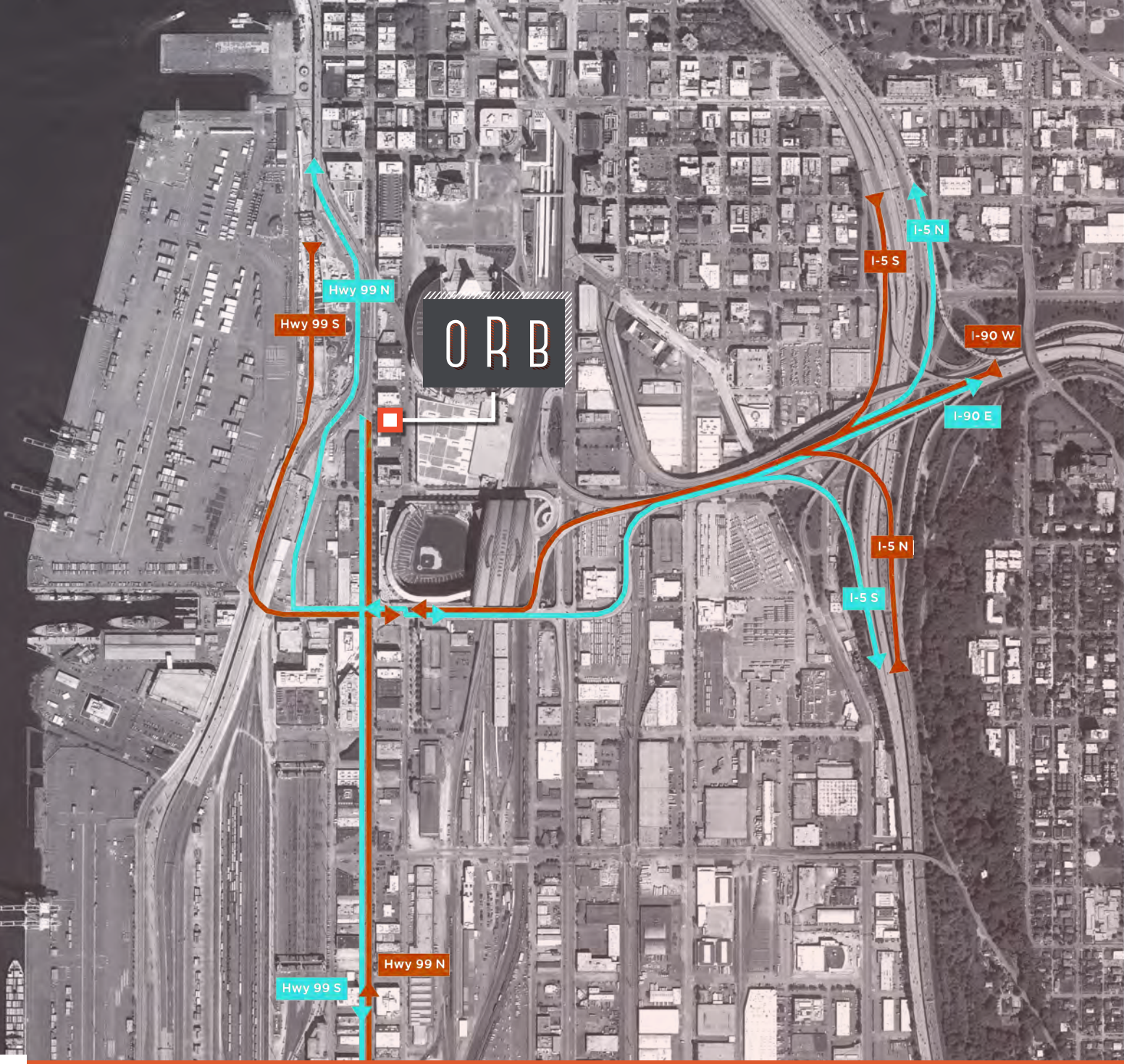


TYPICAL FLOOR



CURRENT AVAILABILITIES

FLOOR	AREA	COMMENTS
2nd	8,628 sq. ft.	Open, creative, brick and beam space





Seattle

HIGHLIGHTS

Over 75 tech companies occupy approximately 1.3 million SF in Pioneer Square

Tenants include; Dell EMC, Avalara, CDK Global, Payscale, RealSelf, Qualtrics, and ComScore.

OLYMPIC REPROGRAPHICS BUILDING

FOR
MORE INFORMATION

SEAN SUSSEX

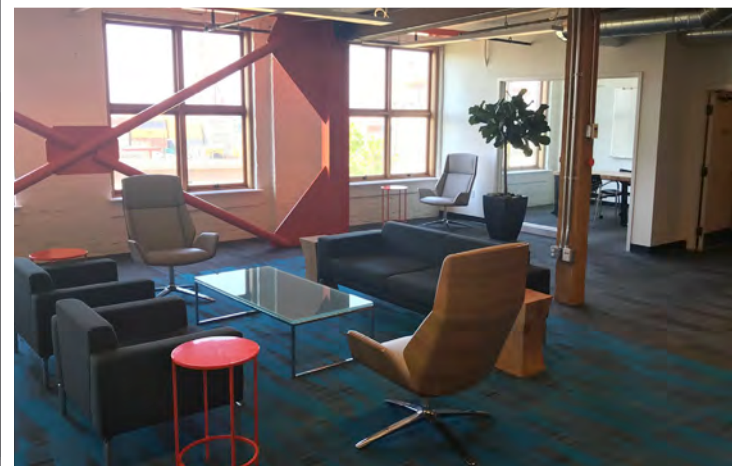
+1 206 292 6041

sean.sussex@cbre.com



CBRE

CBRE, Inc. | 1420 Fifth Avenue, Suite 1700 | Seattle, Washington 98101



© 2018 CBRE, Inc. All rights reserved. This information has been obtained from sources believed reliable, but has not been verified for accuracy or completeness. Any projections, opinions, or estimates are subject to uncertainty. The information may not represent the current or future performance of the property. You and your advisors should conduct a careful, independent investigation of the property and verify all information. Any reliance on this information is solely at your own risk. CBRE and the CBRE logo are service marks of CBRE, Inc. and/or its affiliated or related companies in the United States and other countries. All other marks displayed on this document are the property of their respective owners. Photos herein are the property of their respective owners and use of these images without the express written consent of the owner is prohibited. PMStudio_May2018