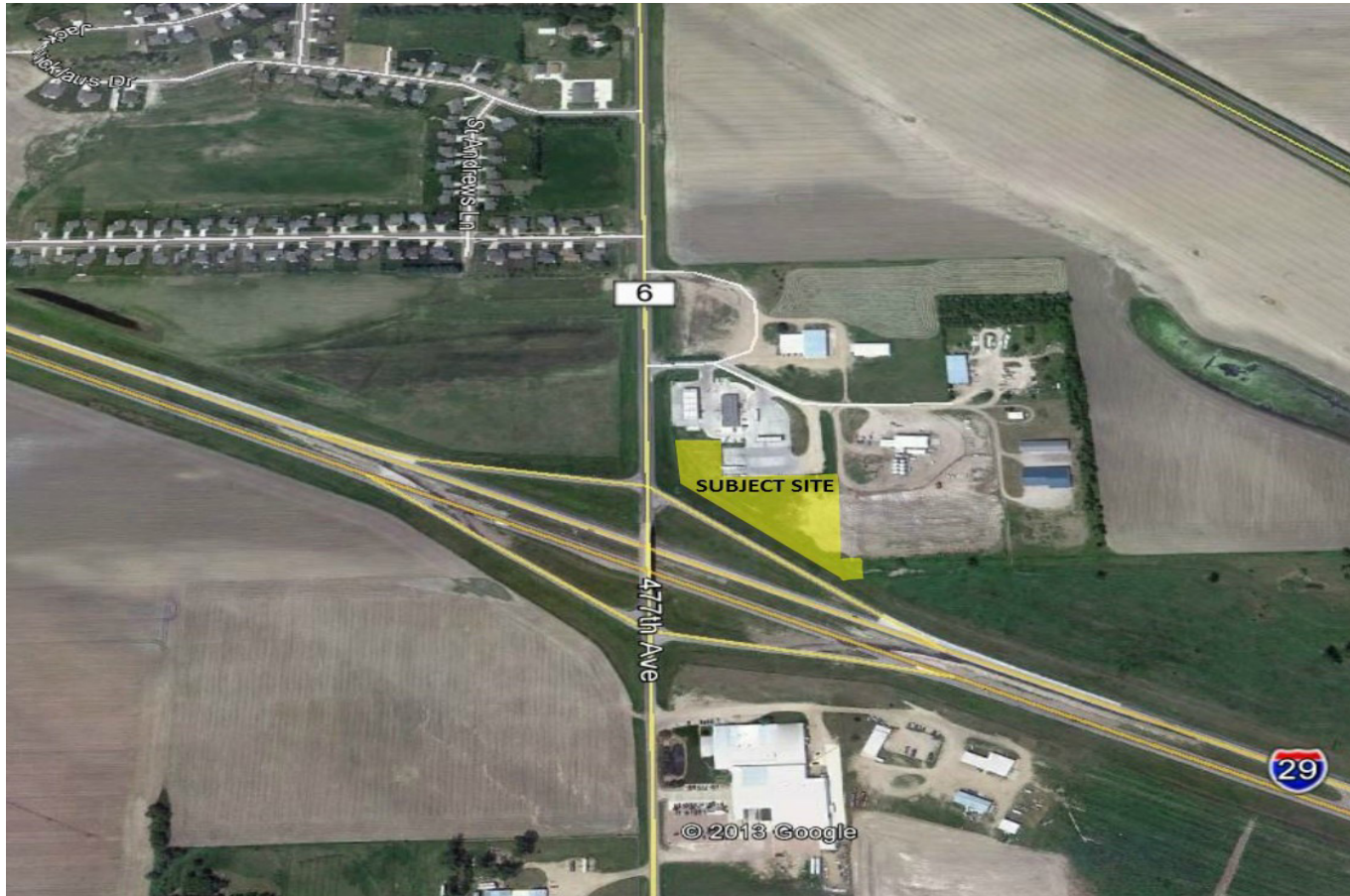


# FOR SALE: KUM & GO LAND

**32562 477 Ave  
Elk Point, SD 57025**



**LAND SIZE :** 2.44 Acres  
**PRICE:** \$2.50 PSF  
**TERMS:** Cash  
**ZONED:** Commercial  
**LEGAL:** Please Contact Agent



**For more information,  
please contact:**

**Kristen Zueger, SIOR**

p: 605.271.2234

c: 605.376.1903

e: [Kristen@VBCLink.com](mailto:Kristen@VBCLink.com)



**VanBuskirk**  
COMPANIES

This information has been secured from sources we believe to be reliable, but we make no representation or warranties, expressed or implied, as to the accuracy of the information. All references to age, square footage, income, and expenses are approximate. Buyers or Lessors should conduct their own independent investigations and rely only on those results.

## PROPERTY INFORMATION

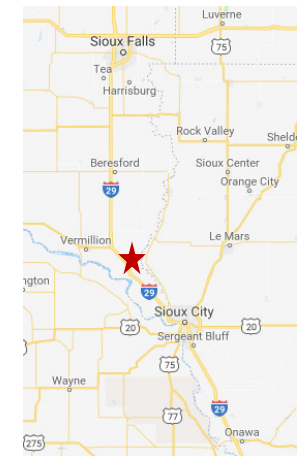
- Located along I-29 on Exit 15, 23 miles north of Sioux City and 66 miles south of Sioux Falls.
- This junction serves as the southern terminus for South Dakota Highway 11, a major thoroughfare in Eastern South Dakota.
- Excellent development site with interstate visibility.
- Adjacent to the new Kum & Go Convenience Center.
- Traffic count on I-29 is 12,610 vehicles per day (SDDOT 2012).

REAL ESTATE DEVELOPMENT | BROKERAGE | INVESTMENT  
MANAGEMENT | COMMERCIAL CONSTRUCTION | ENGINEERING | ARCHITECTURE

2571 S Westlake Dr, Ste 100, Sioux Falls, SD 57106 | o: 605.361.8211 | f: 605.361.8052 | w: [VBCLink.com](http://VBCLink.com)

# FOR SALE: KUM & GO LAND

32562 477 Ave  
Elk Point, SD 57025



For more information,  
please contact:

Kristen Zueger, SIOR

p: 605.271.2234

c: 605.376.1903

e: Kristen@VBCLink.com



This information has been secured from sources we believe to be reliable, but we make no representation or warranties, expressed or implied, as to the accuracy of the information. All references to age, square footage, income, and expenses are approximate. Buyers or Lessors should conduct their own independent investigations and rely only on those results.

REAL ESTATE DEVELOPMENT | BROKERAGE | INVESTMENT  
MANAGEMENT | COMMERCIAL CONSTRUCTION | ENGINEERING | ARCHITECTURE

2571 S Westlake Dr, Ste 100, Sioux Falls, SD 57106 | o: 605.361.8211 | f: 605.361.8052 | w: VBCLink.com