



2310 LONG BEACH BLVD

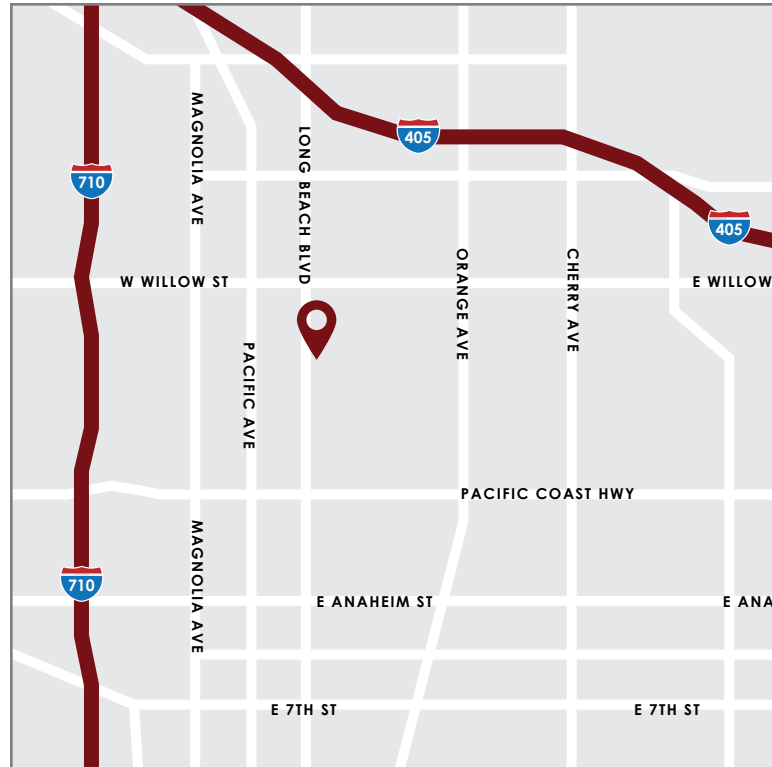
LONG BEACH, CA 90806 | FOR LEASE & SALE



PROPERTY FEATURES

BLDG SF: 12,971 SF on 21,507 SF Lot
PRICE: \$1,751,085.00 (\$135.00 PSF)
RATE: \$0.65 PSF Grs (\$8,431.15 / Mo)
ZONING: LBPD29

- Flex Space with Warehouse / Heavy Power / Clarifier / Floor Drains
- Separate & Additional 5,305 SF Parking Lot
- 43 Parking Spaces
- Two (2) Ground Level Doors - 8'x8' Each
- Fantastic Visibility & Adjacent to the Blue Line
- Great Access to 405 and 710 Freeways



FOR MORE INFORMATION, PLEASE CONTACT:



Dennis Ingram
BRE# 00464251
PH: 562.354.2520
E: dingram@leelalb.com

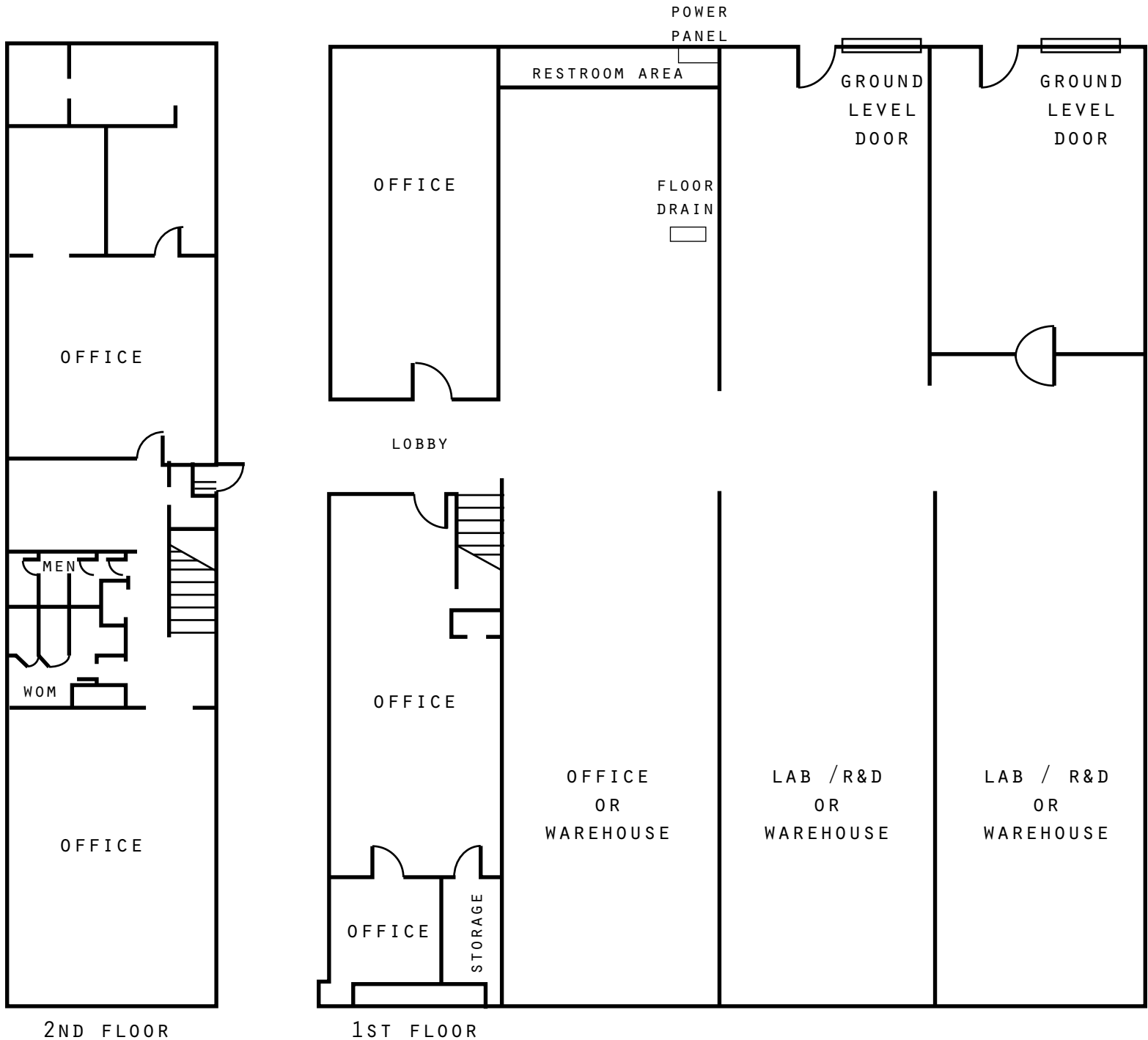
Garrett Massaro
BRE# 01771471
PH: 562.354.2516
E: gmassaro@leelalb.com

Brandon Carrillo
BRE# 01745362
PH: 562.354.2510
E: bcarrillo@leelalb.com



2310 LONG BEACH BLVD

LONG BEACH, CA 90806 | FOR LEASE & SALE



Copyright © Lee & Associates. All rights reserved. No part of this work may be reproduced or distributed without written permission of the copyright owner. The information contained in this report was gathered by Lee & Associates from sources believed to be reliable. Lee & Associates, however, makes no representation concerning the accuracy or completeness of such information and expressly disclaims any responsibility for any inaccuracy contained herein. 5.22.17

FOR MORE INFORMATION, PLEASE CONTACT:



Dennis Ingram
BRE# 00464251
PH: 562.354.2520
E: dingram@leelalb.com

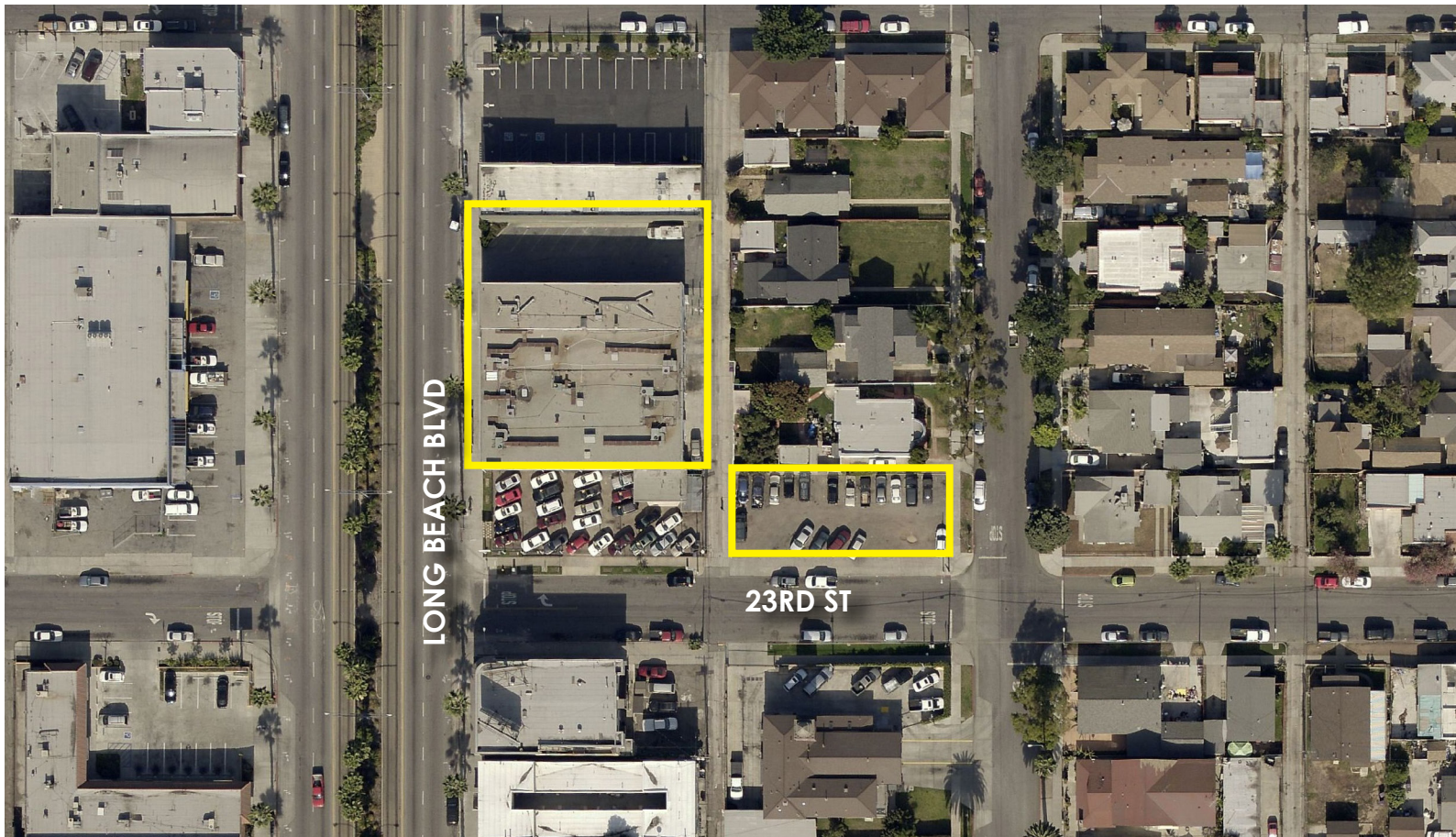
Garrett Massaro
BRE# 01771471
PH: 562.354.2516
E: gmassaro@leelalb.com

Brandon Carrillo
BRE# 01745362
PH: 562.354.2510
E: bcarrillo@leelalb.com



2310 LONG BEACH BLVD

LONG BEACH, CA 90806 | FOR LEASE & SALE



Copyright © Lee & Associates. All rights reserved. No part of this work may be reproduced or distributed without written permission of the copyright owner. The information contained in this report was gathered by Lee & Associates from sources believed to be reliable. Lee & Associates, however, makes no representation concerning the accuracy or completeness of such information and expressly disclaims any responsibility for any inaccuracy contained herein. 5.22.17

FOR MORE INFORMATION, PLEASE CONTACT:

LEE & ASSOCIATES
COMMERCIAL REAL ESTATE SERVICES

Dennis Ingram
BRE# 00464251
PH: 562.354.2520
E: dingram@leelalb.com

Garrett Massaro
BRE# 01771471
PH: 562.354.2516
E: gmassaro@leelalb.com

Brandon Carrillo
BRE# 01745362
PH: 562.354.2510
E: bcarrillo@leelalb.com