

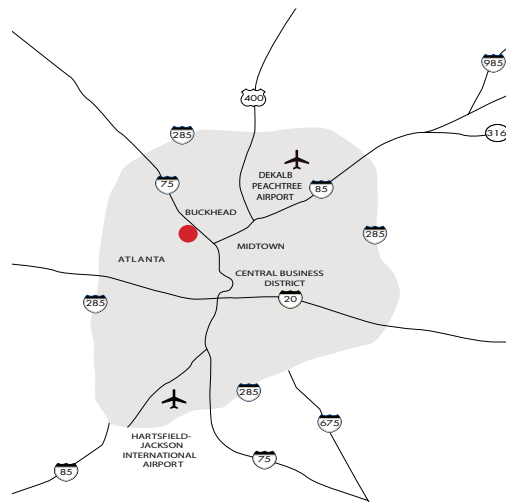


# 1315-B CHATTAHOOCHEE AVE.

ATLANTA, GA 30318

Located in the Chattahoochee Industrial District, this industrial building is conveniently located off I-75, with direct access to downtown Atlanta. Can be utilized for showroom and warehouse space.

| TOTAL SF | OFFICE SF | CLEAR HEIGHT | DOCK DOORS                  | ZONING | SPRINKLER | ELECTRICAL        | ACCESSIBILITY | AVAILABLE |
|----------|-----------|--------------|-----------------------------|--------|-----------|-------------------|---------------|-----------|
| 22,503   | 3,477     | 23'-0"       | (3) 8x10 dh<br>(1) 10x13 dh | I2     | YES       | 400a/120-208v/3ph | LOCK BOX      | NOW       |



**EXCLUSIVELY  
MARKETED BY:**

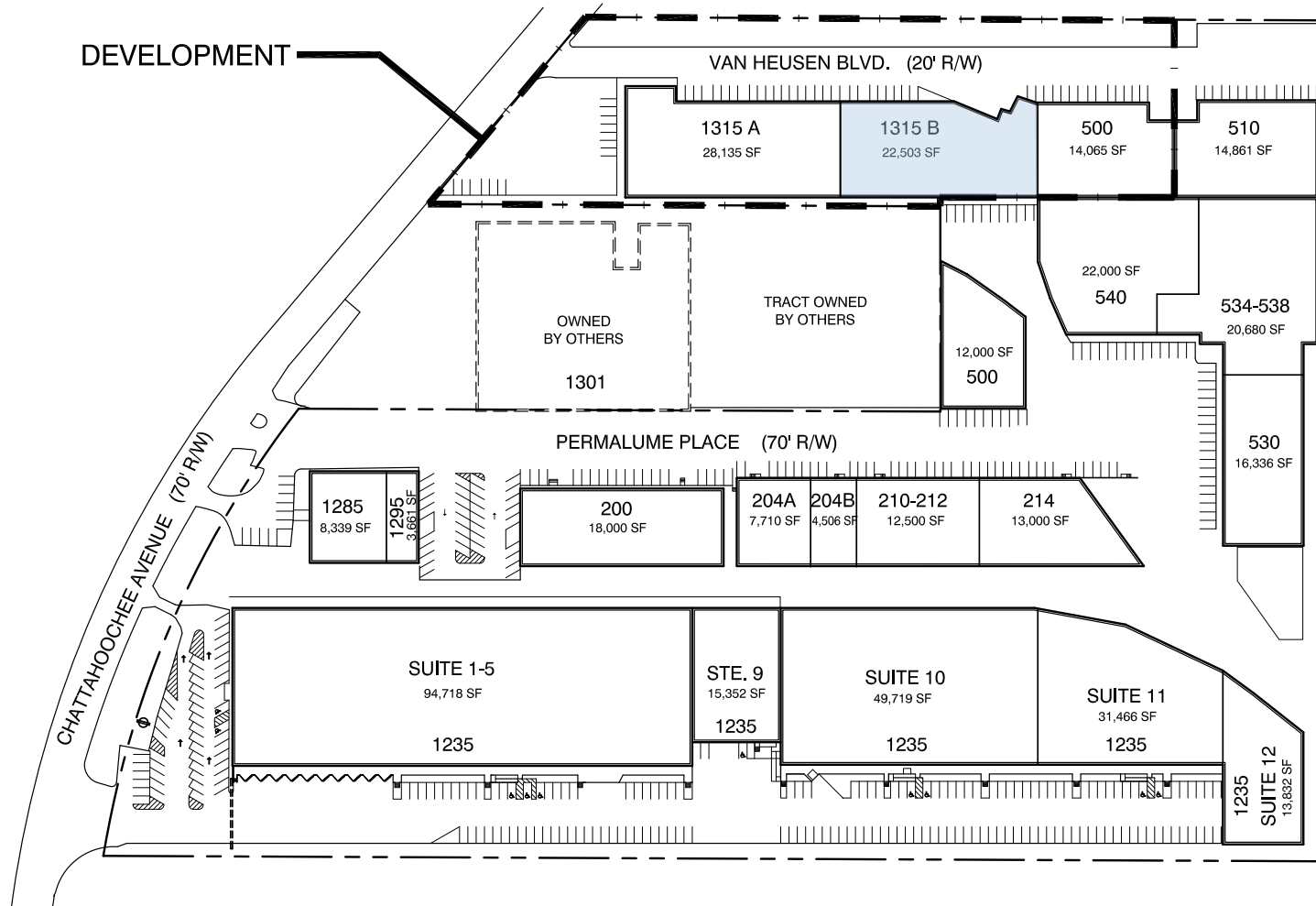
Jim Saine  
(404) 898 9010  
jsaine@seligenterprises.com



All measures, facts, and figures are subject to verification.

EXCEPT WITH RESPECT TO THE OBLIGATIONS OF LANDLORD WHICH ARE EXPRESSLY PROVIDED IN THE LEASE, LANDLORD HAS MADE NO AGREEMENT, REPRESENTATION OR WARRANTY WITH RESPECT TO THE STATUS OR EXISTENCE OF ANY LEASE, OCCUPANCY OR USAGE OF ANY SPACE, OR THE EXISTENCE, LOCATION OR LOCATION OF ANY BUILDINGS, IMPROVEMENTS, PARKING AREAS, CURBS, UTILITY, SERVICES OR OTHER COMMON AREAS WITH RESPECT TO THE SHOPPING CENTER OR ANY OUTPARCELS OR OTHER PROPERTY. LANDLORD BELIEVES THAT THE INFORMATION CONTAINED WITHIN THE DRAWINGS IS PRESENTLY CORRECT, BUT LANDLORD MAKES NO WARRANTY, REPRESENTATION OR GUARANTEE AS TO ITS ACCURACY OR WHETHER IT WILL REMAIN AS CONFIGURED, AND LANDLORD RECOMMENDS THAT ALL INFORMATION BE FIELD VERIFIED PRIOR TO DESIGN AND CONSTRUCTION.

DEVELOPMENT



SCALE: 1" = 120'

DATE: 04/02/13

1315 CHATTAHOOCHEE & 500 VAN HEUSEN BOULEVARD: LEASING PLAN



1315 CHATTAHOOCHEE AVE  
 & 500 VAN HEUSEN BLVD.  
 ATLANTA, GA. 30318

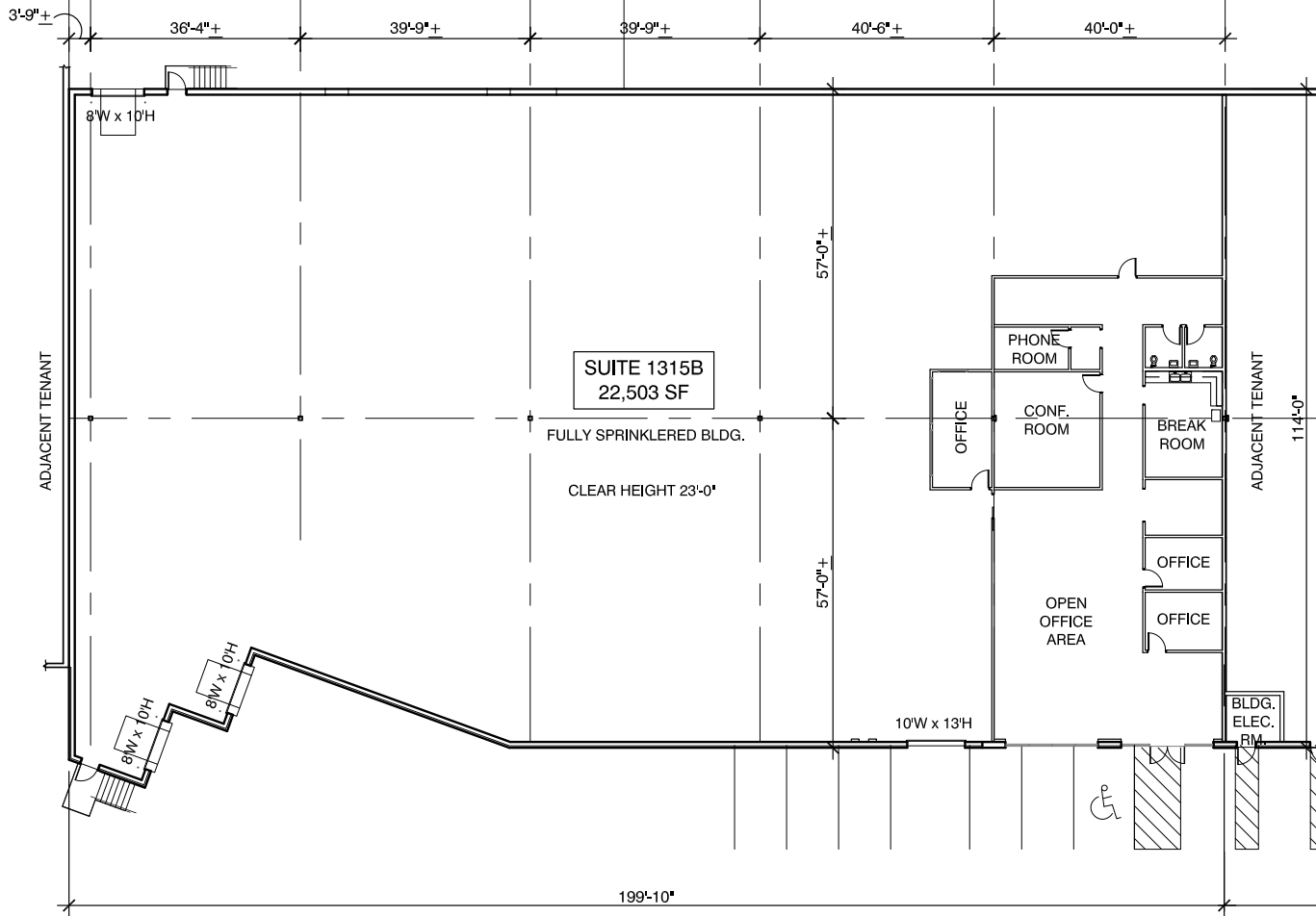
DRAWN BY: CO



1100 SPRING STREET NW SUITE 550  
 ATLANTA, GEORGIA 30309-2848  
 TEL (404) 876-5511 FAX (404) 875-2629

1315 CHATTAHOOCHEE AVE & 500 VAN HEUSEN BLVD. PERMALUME PLACE. DATE: 04/02/13

EXCEPT WITH RESPECT TO THE OBLIGATIONS OF LANDLORD WHICH ARE EXPRESSLY PROVIDED IN THE LEASE, LANDLORD HAS MADE NO AGREEMENT, REPRESENTATION OR WARRANTY WITH RESPECT TO THE STATUS OR CONDITION OF ANY LEASE OCCUPANCY OR USAGE OF ANY SPACE, OR THE EXISTENCE, DESIGN OR LOCATION OF ANY BUILDINGS, IMPROVEMENTS, PARKING AREAS, CURB CUTS, DRIVEWAYS OR OTHER COMMON AREAS WITH RESPECT TO THE SHOPPING CENTER OR ANY OUTFACILITIES ON OTHER PROPERTY. LANDLORD BELIEVES THAT THE INFORMATION CONTAINED WITHIN THIS DRAWING IS PRESENTLY CORRECT, BUT LANDLORD MAKES NO WARRANTY, REPRESENTATION OR GUARANTEE AS TO ITS ACCURACY OR WHETHER IT WILL REMAIN AS CONFIGURED, AND LANDLORD RECOMMENDS THAT ALL INFORMATION BE FIELD VERIFIED PRIOR TO DESIGN AND CONSTRUCTION.



OFFICE AREA = 3,477 SF  
 0 10' 20' 40'  
 SCALE: 1"=20'  
 DATE: 08/14/14

### 1315 CHATTAHOOCHEE AVE: SUITE 1315B - FLOOR PLAN

1315 CHATTAHOOCHEE AVE.  
 ATLANTA, GA. 30318

DRAWN BY: CO  

 1100 SPRING STREET NW SUITE 550  
 ATLANTA, GEORGIA 30309-2848  
 TEL (404) 876-5511 FAX (404) 875-2629

1315 CHATTAHOOCHEE AVE SUITE 1315B FLOOR PLAN.dwg  
 08/14/14 10:23:00 AM  
 1315 CHATTAHOOCHEE AVE SUITE 1315B FLOOR PLAN.dwg  
 08/14/14 10:23:00 AM

# 1315-B CHATTAHOOCHEE AVE.

ATLANTA, GA 30318

