



**3,296**  
Square feet available



**3RD**  
Busiest station of all CTA's L stations



**55'**

Frontage on Lake Street, 32' onto Clark

## Trains, Planes and Automobiles All Lead to 203 N. LaSalle



### PROPERTY DESCRIPTION

A Skidmore, Owings, Merrill designed 27 story, 634,739 sf office building located at the NWC of Clark & Lake Street. Building envelopes an 'L' stop for the Brown, Pink, Green, Orange and Purple lines, provides easy access to the Blue Line train across the street and sits atop a 1,200 space parking garage. Ownership has already invested \$15M in a complete lobby renovation and tenant amenity lounge.

### AVAILABLE RESTAURANT SPACE

Corner space measuring 3,296 rsf with existing Black Iron and rest rooms. Space has direct access from the street and building lobby.



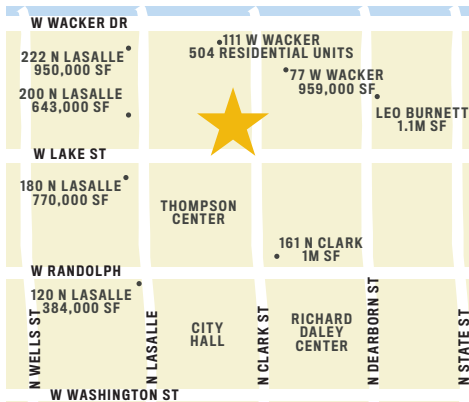
**\$116.6K**  
Household income in a two block radius



**33.5K**  
Total pedestrian combined on Lake and Clark



**17K**  
Vehicles per day at the intersection



### COMMERCIAL TENANTS



### AREA OFFICE TENANTS

Grant Thornton, Greenberg Traurig, Jones Day, McGuire Woods, Travelers Insurance and Accenture.

### DEMOGRAPHICS

	1/2 MILE	1 MILE
RESIDENTIAL POP	18,817	89,774
DAYTIME POP	317,926	558,855

#### EXCLUSIVE AGENTS

**John Vance** 312/782-1373  
jvance@stonerealestate.com

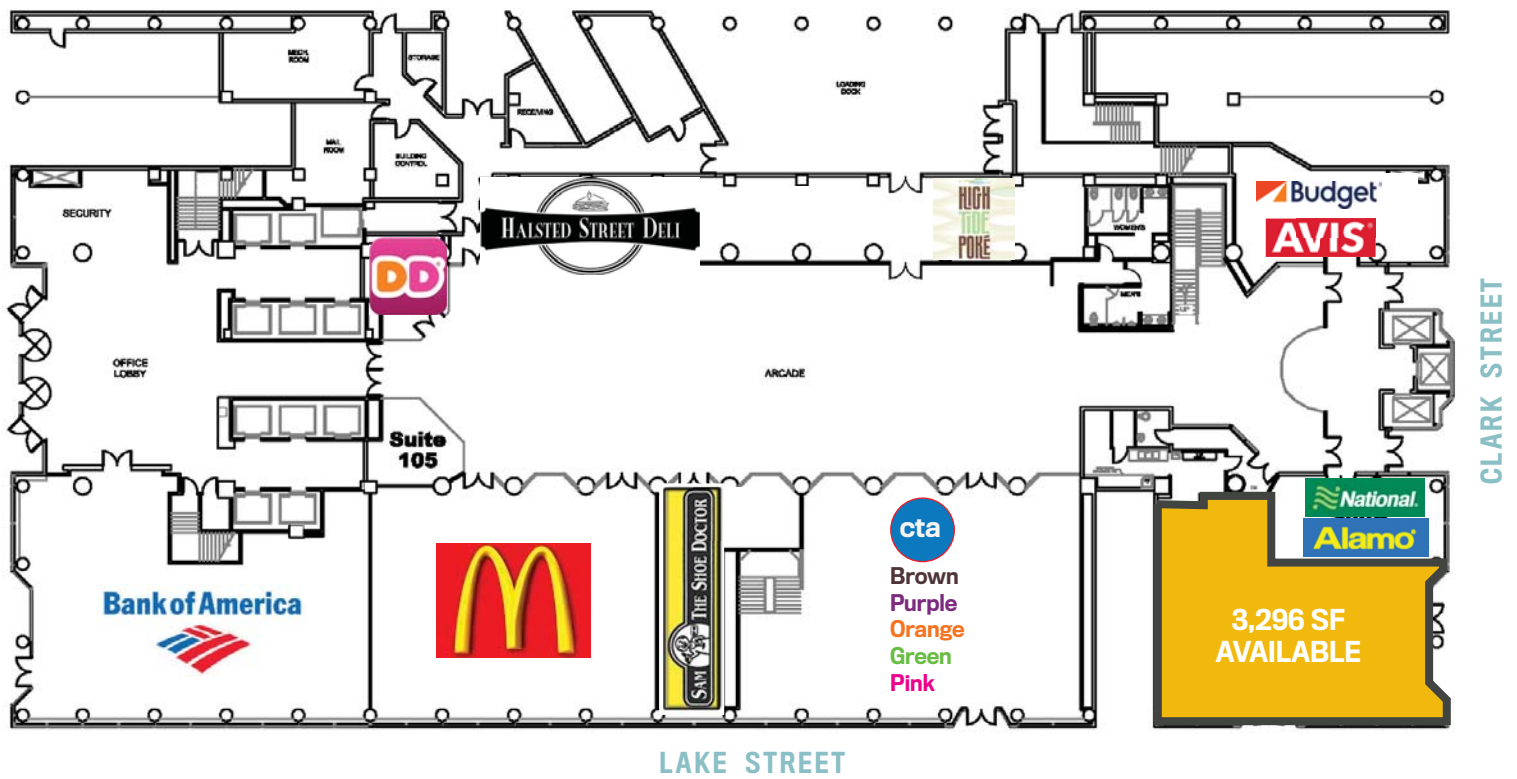
**David Stone** 312/372-2657  
dstone@stonerealestate.com

#### OFFICE LEASING

Telos

#### MANAGEMENT

M & J Wilkow



EXCLUSIVE AGENTS

John Vance 312/782-1373  
jvance@stonerealestate.com

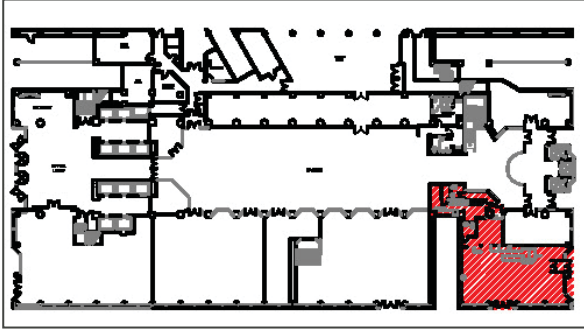
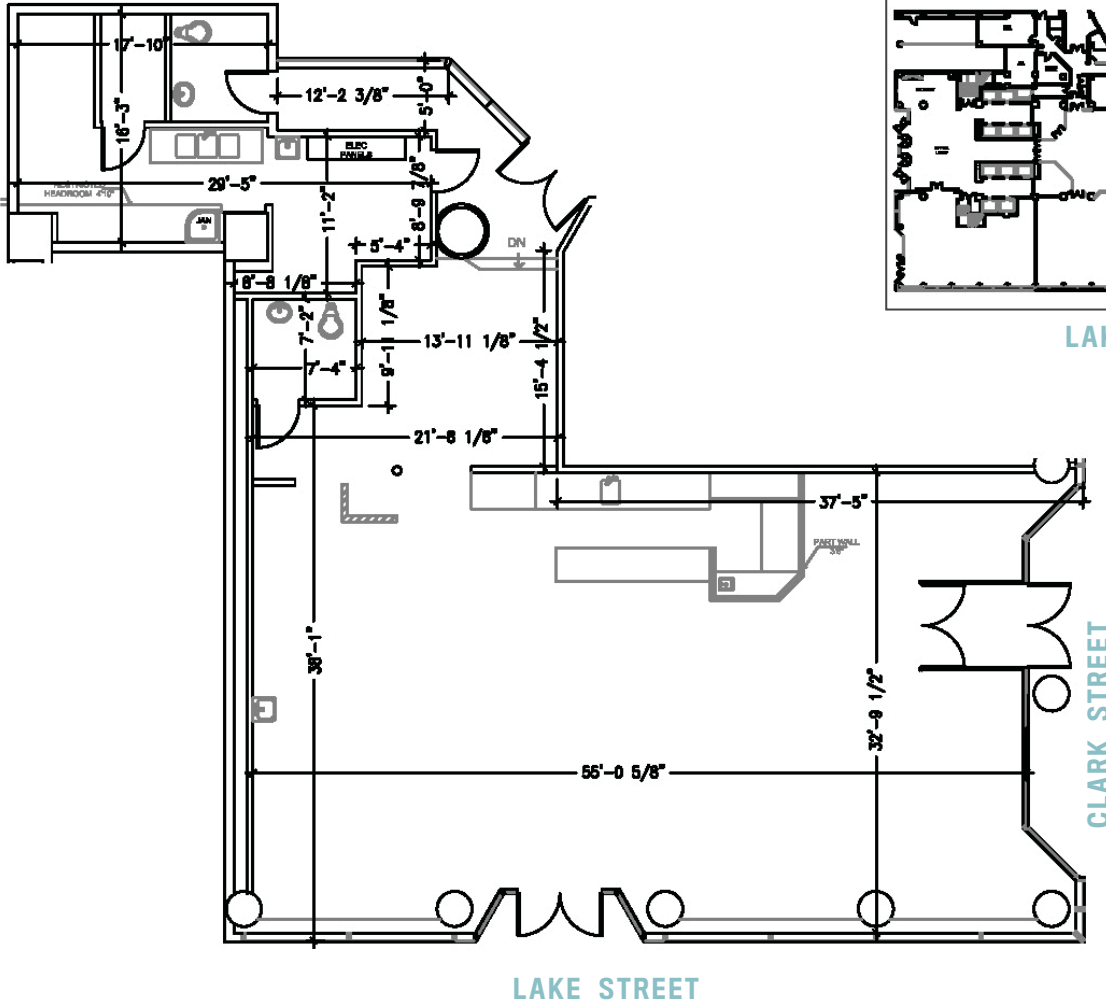
David Stone 312/372-2657  
dstone@stonerealestate.com

OFFICE LEASING

Telos

MANAGEMENT

M & J Wilkow



LAKE STREET

CLARK STREET

CLARK STREET

LAKE STREET



EXCLUSIVE AGENTS

**John Vance** 312/782-1373  
jvance@stonerealestate.com

**David Stone** 312/372-2657  
dstone@stonerealestate.com

OFFICE LEASING

Telos

MANAGEMENT

M & J Wilkow



EXCLUSIVE AGENTS

**John Vance** 312/782-1373  
jvance@stonerealestate.com

**David Stone** 312/372-2657  
dstone@stonerealestate.com

OFFICE LEASING

Telos

MANAGEMENT

M & J Wilkow