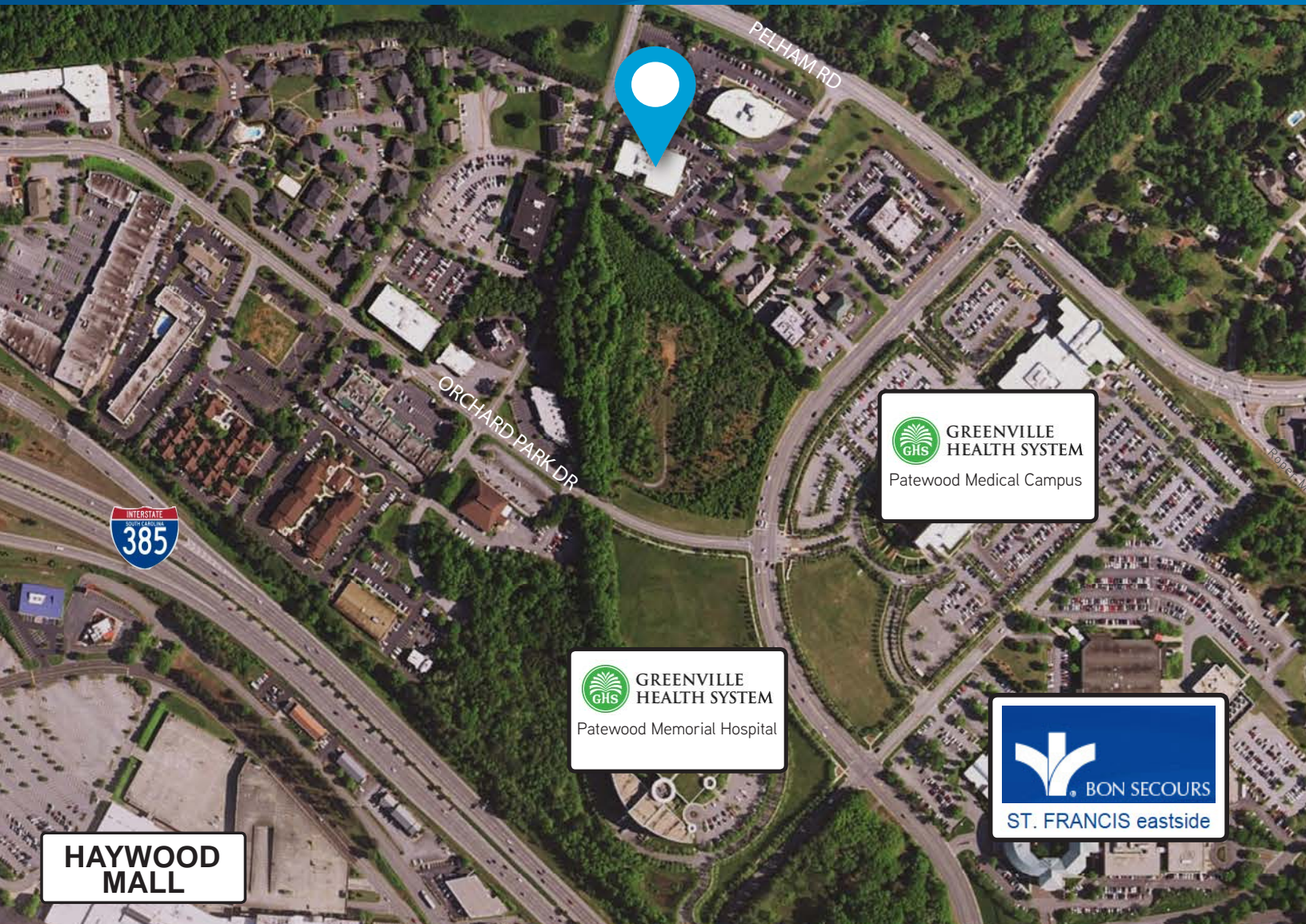


FOR LEASE > ±8,544 SF MEDICAL OFFICE SPACE > EASTSIDE LOCATION

# Eastside Medical Center



10 ENTERPRISE BLVD, GREENVILLE, SC 29615



## Eastside Medical Office Space

> ±8,544 SF available in multiple suites:

- Suite 101: ±1,520 RSF
- Suite 107: ±1,602 RSF
- Suite 110: ±1,634 RSF
- Suite 209: ±2,260 RSF

- > Convenient to Bon Secours St. Francis eastside, Greenville Health System Patewood Medical Campus and Patewood Memorial Hospital
- > Well-established campus
- > Ample surface parking
- > Newly renovated common areas
- > LEASE PRICE: \$19.00/SF Modified Gross

**BRANTLEY ANDERSON**  
DIR 864 527 5440  
MAIN 864 297 4950  
brantley.anderson@colliers.com

**TAYLOR ALLEN**  
DIR 864 527 5423  
MAIN 864 297 4950  
taylor.allen@colliers.com

**COLLIERS INTERNATIONAL**  
55 E. Camperdown Way, Suite 200  
Greenville, South Carolina 29601  
www.colliers.com/southcarolina



FOR LEASE > ±8,544 SF MEDICAL OFFICE SPACE > EASTSIDE LOCATION

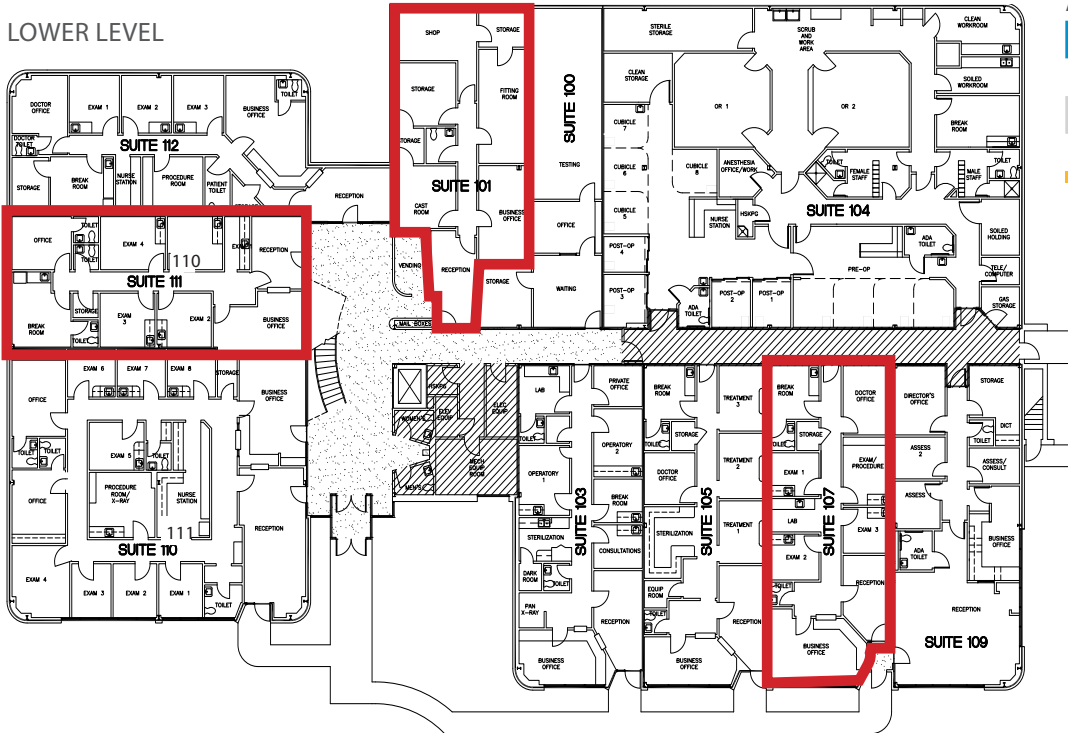
# Eastside Medical Center



10 ENTERPRISE BLVD, GREENVILLE, SC 29615

## FLOOR PLANS

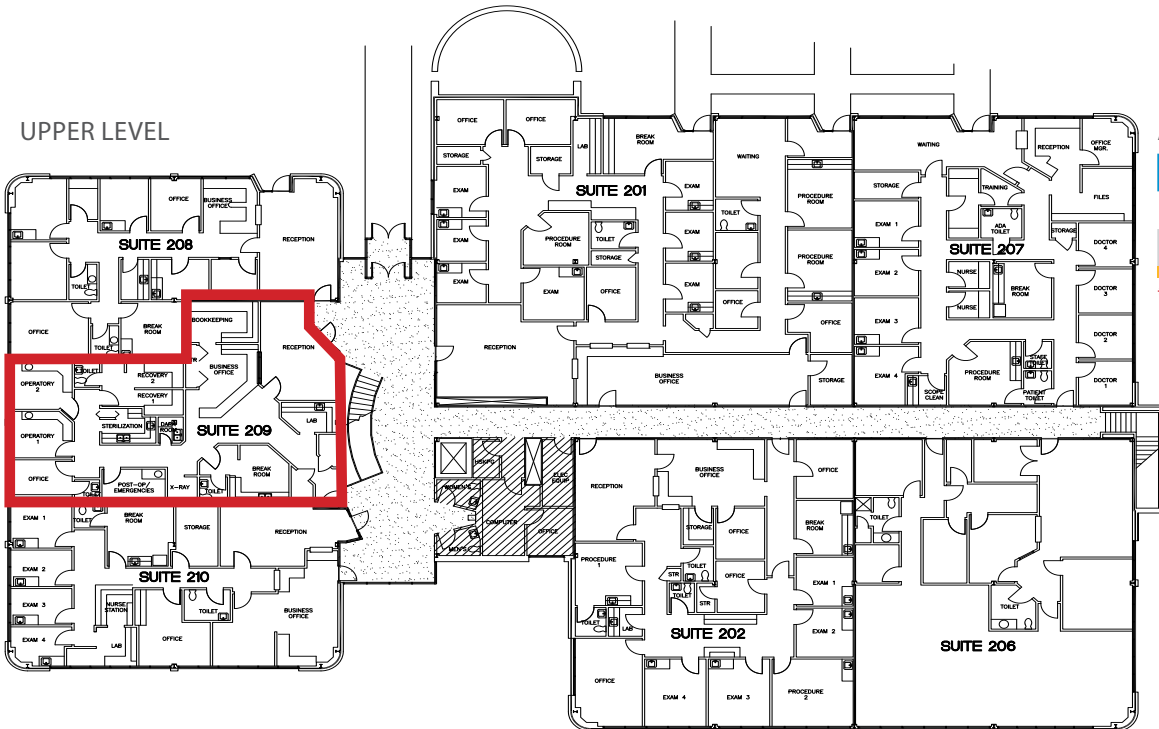
### LOWER LEVEL



### AVAILABILITIES

SUITE	RSF
SUITE 101	±1,520 RSF
SUITE 107	±1,602 RSF
SUITE 110	±1,634 RSF

### UPPER LEVEL



### AVAILABILITIES

SUITE	RSF
SUITE 203*	±1,528 RSF
SUITE 209	±2,260 RSF

\* SUITE 203 IS WITHIN SUITE 201 (NOT SHOWN ON FLOOR PLAN)

**BRANTLEY ANDERSON**  
 DIR 864 527 5440  
 MAIN 864 297 4950  
 brantley.anderson@colliers.com

**TAYLOR ALLEN**  
 DIR 864 527 5423  
 MAIN 864 297 4950  
 taylor.allen@colliers.com

This document has been prepared by Colliers International for advertising and general information only. Colliers International makes no guarantees, representations or warranties of any kind, expressed or implied, regarding the information including, but not limited to, warranties of content, accuracy and reliability. Any interested party should undertake their own inquiries as to the accuracy of the information. Colliers International excludes unequivocally all inferred or implied terms, conditions and warranties arising out of this document and excludes all liability for loss and damages arising there from. This publication is the copyrighted property of Colliers International and/or its licensor(s). ©2016. All rights reserved.