

Up to 79,000 SF  
Available 1/1/2021



**8110** CORPORATE  
DRIVE

White Marsh, MD 21236





MAIN LOBBY



## FEATURES

White Marsh is a viable Live-Work-Play Community adjacent to and at key I-95 location

- » The Avenue at White Marsh and expansion plans
- » White Marsh Mall
- » Nottingham Square

Myriad of amenities located within minutes of Corporate Place; Highest walkability score in the submarket

Corporate Place stands above White Marsh competition

Timeless building design

Large Floorplates of 25,000 SF

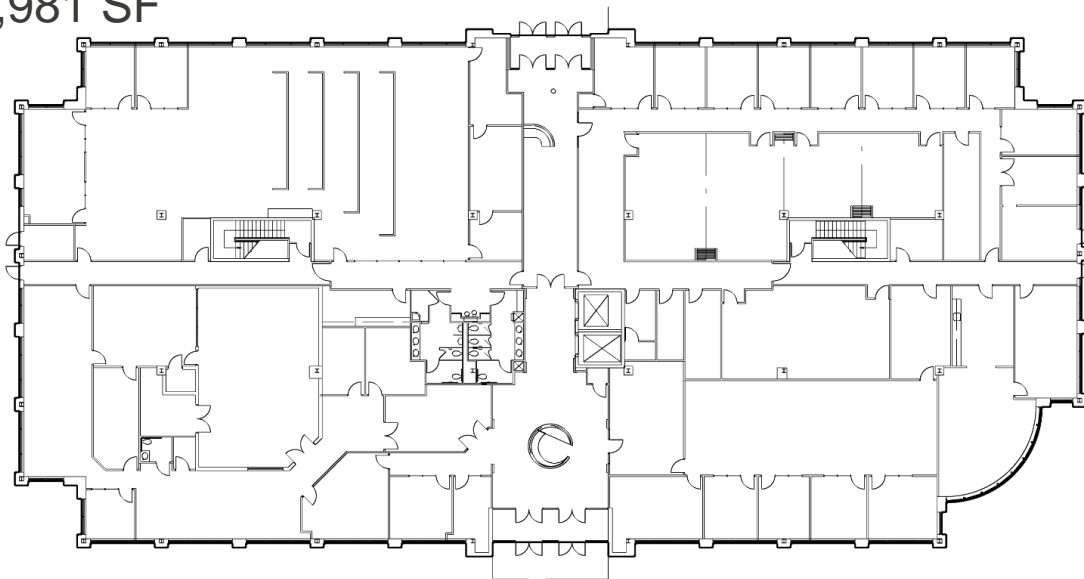
Greater than 4/1,000 SF surface parking

Signage available

COVID Protection: low rise suburban office setting with open surface lot parking and frequent cleanings with porter service

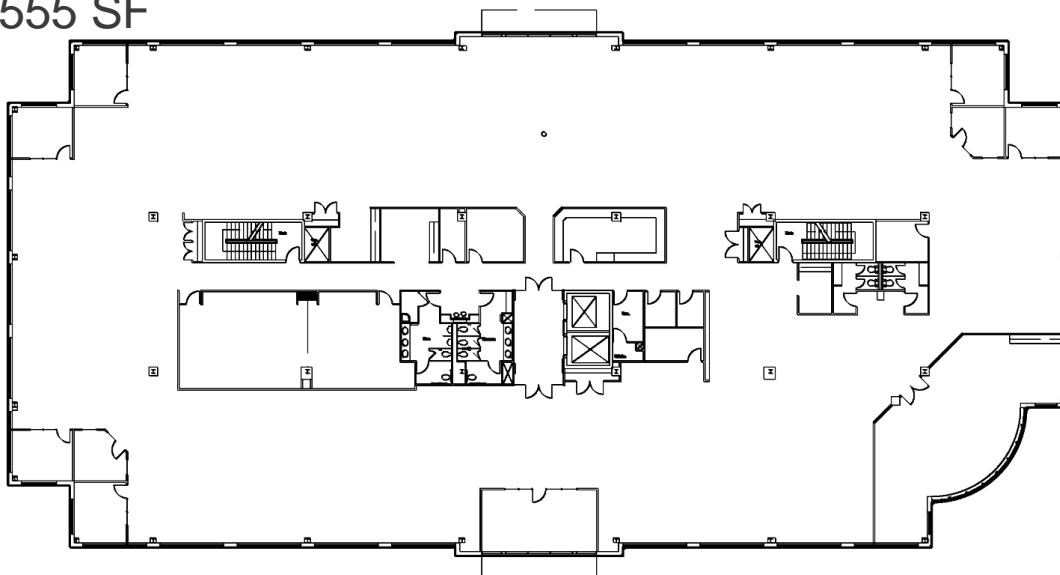
# FIRST FLOOR

Up to 25,981 SF



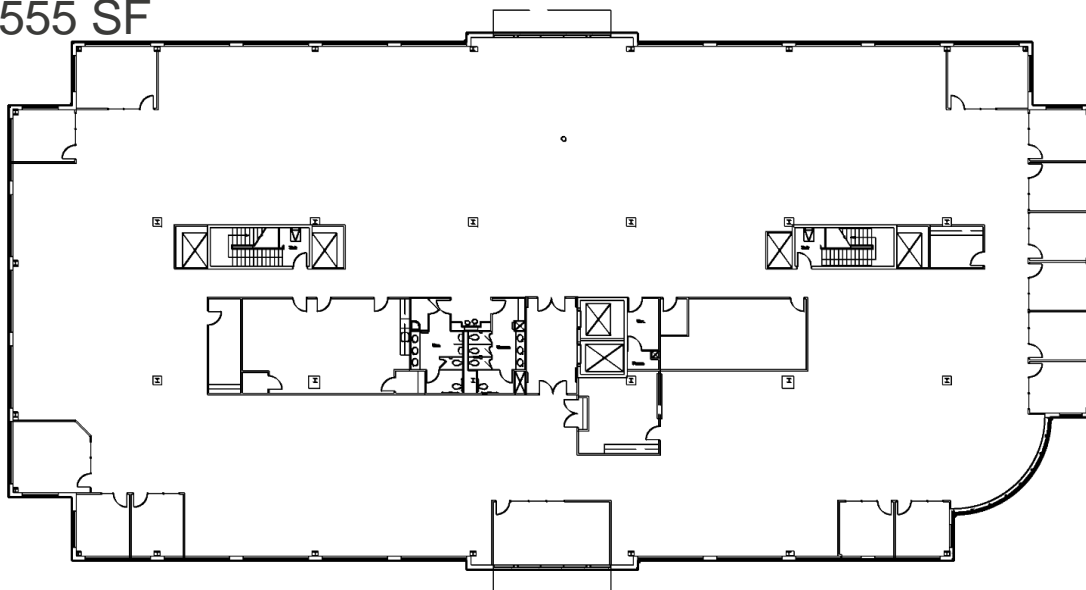
# SECOND FLOOR

Up to 26,555 SF



# THIRD FLOOR

Up to 26,555 SF





# 8110 CORPORATE DRIVE LOCATION MAP



**Lizzy Sweeney**  
 +1 410 347 1149  
[lizzy.sweeney@cushwake.com](mailto:lizzy.sweeney@cushwake.com)

**Matt Melnick**  
 +1 410 685 9880  
[matthew.melnick@cushwake.com](mailto:matthew.melnick@cushwake.com)

**Maura Smith**  
 +1 410 347 7817  
[maura.smith@cushwake.com](mailto:maura.smith@cushwake.com)