

# Retail Endcap | For Lease



8417 Evergreen Way, Everett WA 98208

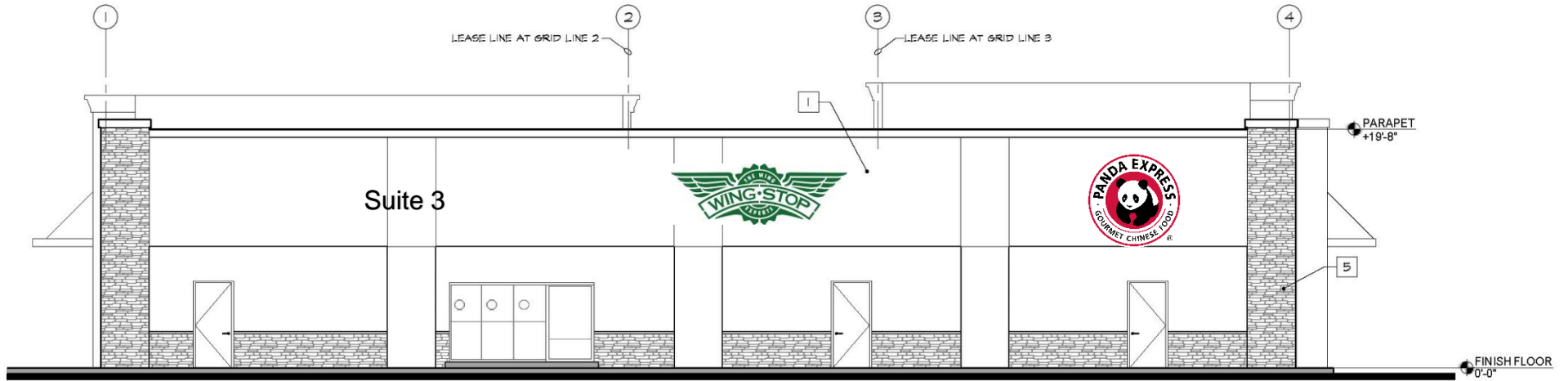
Brynn Estelle Telkamp

Be|RETAIL | 206.650.8595 | brynn@be-retail.co

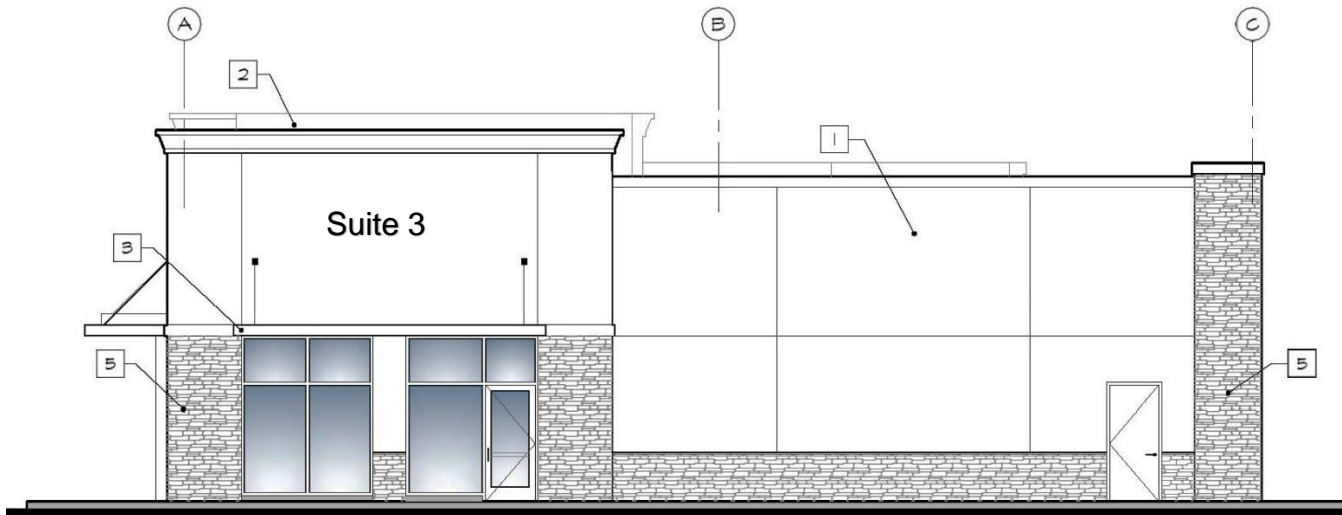


NV Developments, LLC

# Retail Endcap | For Lease



## SOUTHEAST ELEVATION



## SOUTHWEST ELEVATION

Brynn Estelle Telkamp

Be|RETAIL | 206.650.8595 | brynn@be-retail.co

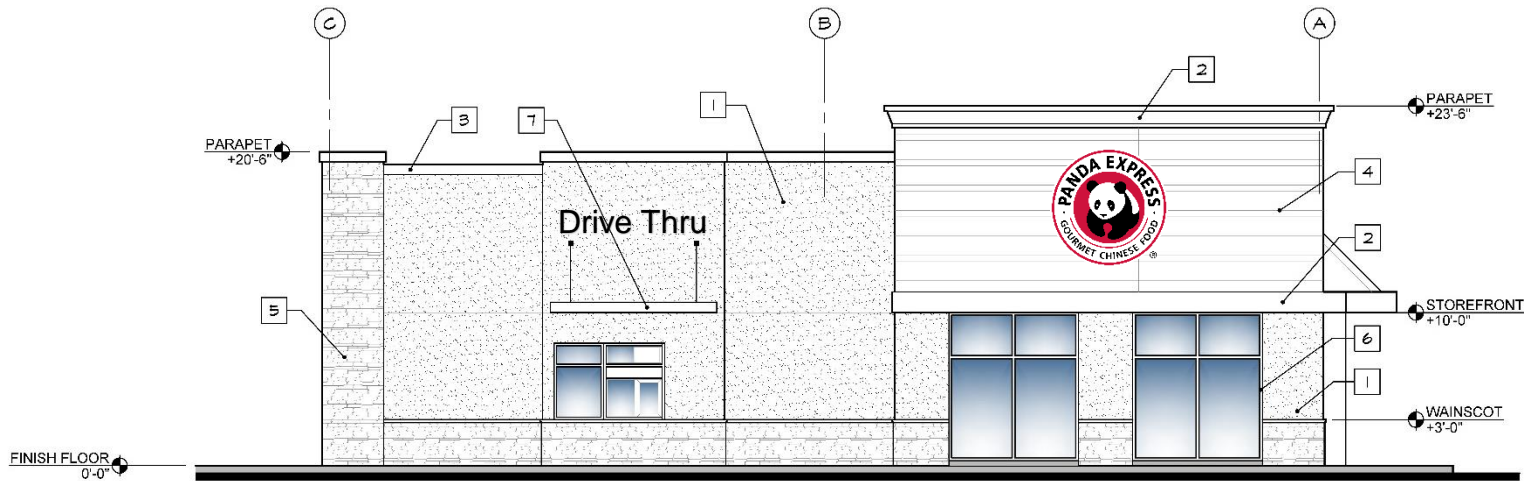


NV Developments, LLC

# Retail Endcap | For Lease



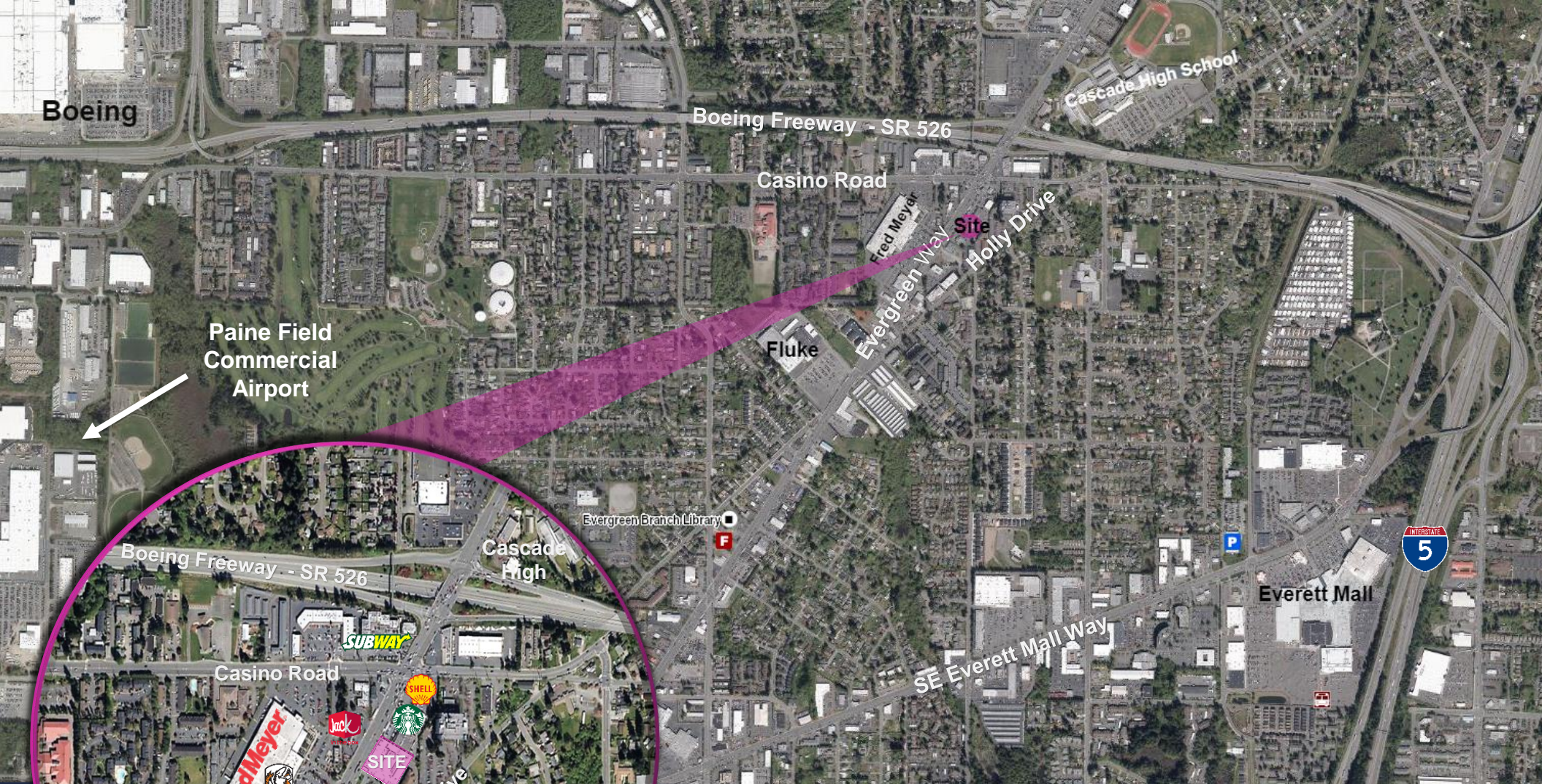
## NORTHWEST ELEVATION



## NORTHEAST ELEVATION

Brynn Estelle Telkamp

Be|RETAIL | 206.650.8595 | brynn@be-retail.co

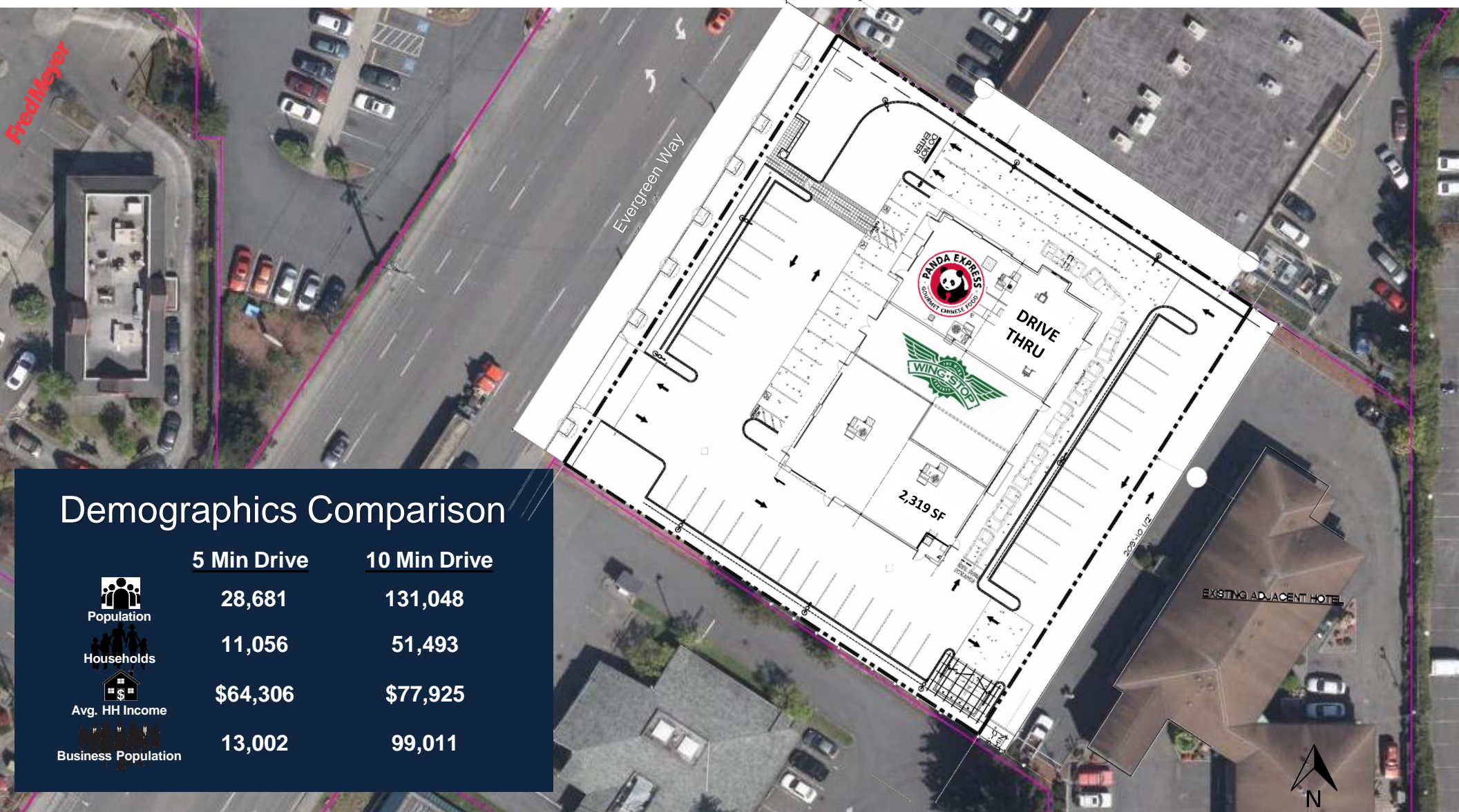


<b>LEASED</b>	Suite 1	Panda Express
<b>LEASED</b>	Suite 2	Wingstop
<b>AVAILABLE</b>	Suite 3	2,319 SF Endcap
	<b>Total</b>	<b>2,319 SF</b>
<b>ASKING RENT</b>	\$ 38.00	
<b>NNN's</b>	\$ 8.75 PSF	
<b>PARKING</b>	55	
<b>TENANT ALLOWANCE</b>	Negotiable	
<b>DELIVERY</b>	Now	



NV Developments, LLC

# Retail Endcap | For Lease



## Demographics Comparison

5 Min Drive      10 Min Drive



Population

28,681

131,048



Households

11,056

51,493



Avg. HH Income

\$64,306

\$77,925



Business Population

13,002

99,011

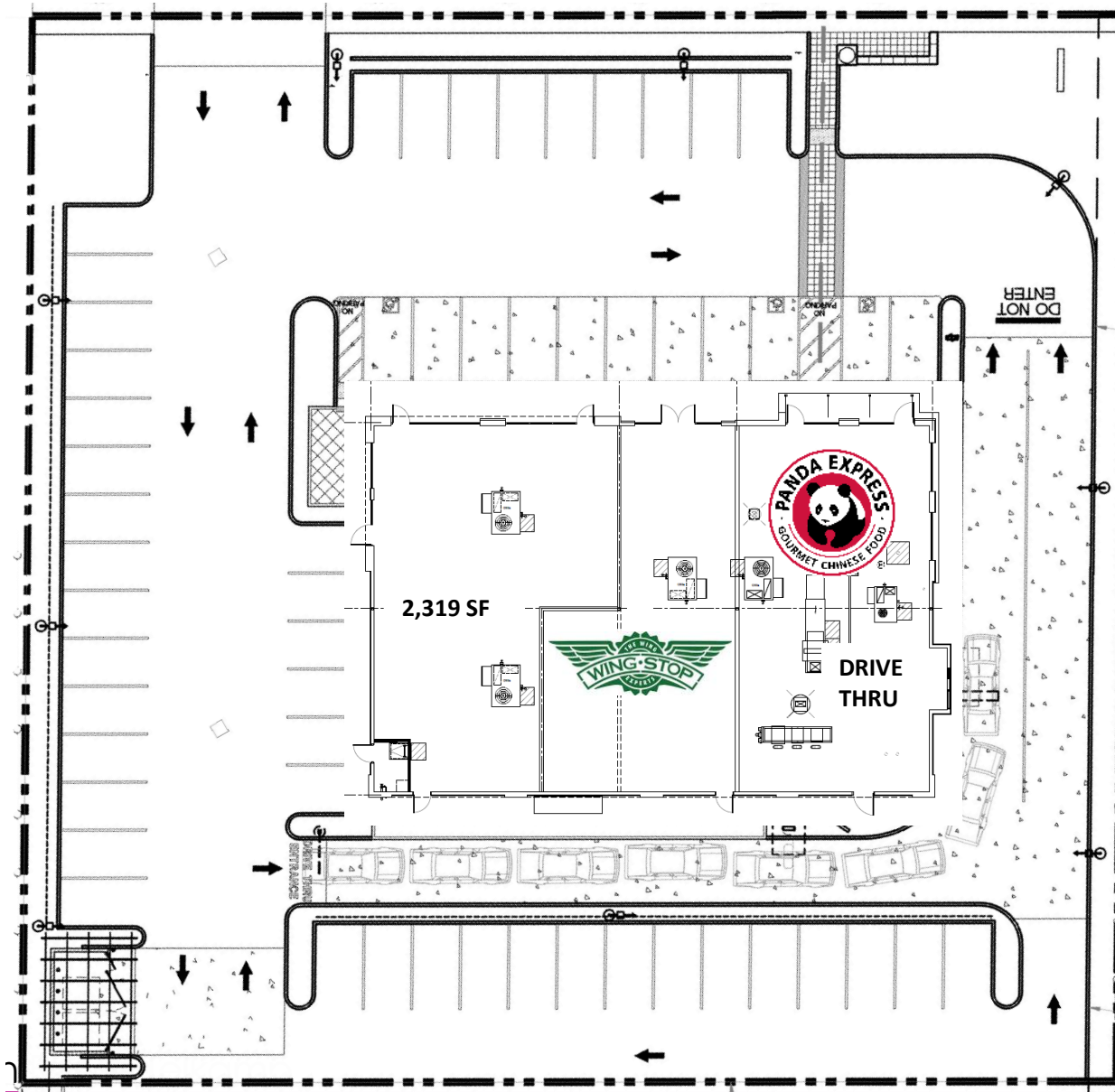
Brynn Estelle Telkamp

Be|RETAIL | 206.650.8595 | brynn@be-retail.co

# Retail Endcap | For Lease



EVERGREEN WAY



## RETAIL LEASING

Brynn Estelle Telkamp

Lloyd Building  
603 Stewart Street  
Suite 610  
Seattle WA 98101

## Be | RETAIL

Brynn@be-retail.co  
O 206.264.0648  
M 206.650.8595

This information supplied herein is from sources we deem reliable. It is provided without any representations, warranty or guarantee, expressed or implied as to its accuracy. Prospective Buyer or Tenant should conduct an independent investigation and verification of all matters deemed to be material. 5/6/20