

FOR LEASE

GRAMARK OFFICE BUILDING

12300 SE MALLARD WAY • MILWAUKIE, OR 97222

**COMPLETELY
RENOVATED!**



The Gramark Office Building is a free standing suburban office building with easy access to Hwy 224 & I-205. Abundant parking, creekside water features, and well maintained landscaping make this a very attractive and affordable office location. The Gramark Office Building is also adjacent to over 200,000 SF of light manufacturing and distribution space which could be combined with an office only component. Business services, restaurants and fitness centers nearby.

- Move-in Ready Suites - Full Service Rates
- 100 free Surface Spaces are available; Ratio of 4 per 1,000 SF
- Located in Clackamas County Enterprise Zone
- 14.9 Miles to Portland International Airport, and 2 Miles to I-205
- Full Floor Available

BUILDING	TOTAL SF	RATE PSF
SUITE 120	848 SF	\$17.50 FS
SUITE 206	1,220 SF	\$17.50 FS
SUITE 212	2,445 SF	\$18.50 FS
SUITE 216	1,640 SF	\$17.50 FS

Contact

SCOTT KAPPES, SIOR
503.517.9877

SCOTTK@
CAPACITYCOMMERCIAL.COM



Contact

KENNY HOUSER
503.517.9875

KENNY@
CAPACITYCOMMERCIAL.COM

805 SW Broadway
Suite 700
Portland, OR 97205

t. 503.326.9000
f. 503.425.1006

Proud member of:

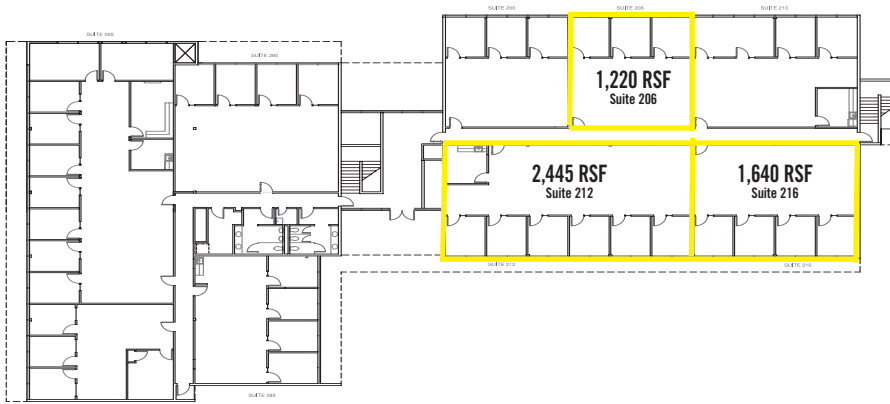
CORFAC
International

The information contained herein is believed to be accurate but is not warranted as to its accuracy and may change or be updated without notice. Seller or landlord makes no representation as to the environmental condition of the property and recommends purchaser's or tenant's independent investigation.

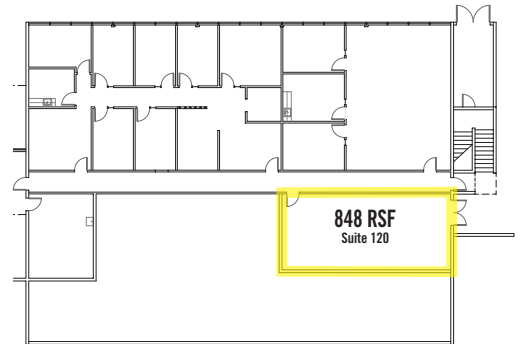
FOR LEASE



12300 SE MALLARD WAY • MILWAUKIE, OR 97222



Upper Level



Lower Level - East Wing

Contact

SCOTT KAPPES, SIOR
503.517.9877

SCOTTK@
CAPACITYCOMMERCIAL.COM



Contact

KENNY HOUSER
503.517.9875

KENNY@
CAPACITYCOMMERCIAL.COM

805 SW Broadway
Suite 700
Portland, OR 97205

t. 503.326.9000
f. 503.425.1006

Proud member of:
CORFAC
International

The information contained herein is believed to be accurate but is not warranted as to its accuracy and may change or be updated without notice. Seller or landlord makes no representation as to the environmental condition of the property and recommends purchaser's or tenant's independent investigation.

7/6/17