

# PLATINUM CENTRE

## LOUISE AVENUE SPACE FOR LEASE

North Endcap Available for Lease



6909 South Louise Avenue  
Sioux Falls, SD 57108



### size

1,274 square feet



### price

\$15.00 per foot (NNN)  
(NNN estimate = \$5.25)



### neighbors

Kosama, Edward Jones,  
Holiday Gas Stop,  
Security National Bank,  
ACE Hardware (proposed)



### t.i.a.

Landlord is offering  
\$50/foot Tenant  
Improvement Allowance



### location

Fantastic location on  
Louise Avenue, just  
south of Interstate 229



### traffic

19,800 cars per day

Information deemed reliable but not guaranteed.



5800 South Remington Place #100  
Sioux Falls, South Dakota 57108  
VBCLink.com | 605.361.8211



605.376.0127

Ryan.Tysdal@VBCLink.com

QDOBA

verizon wireless

57<sup>th</sup> Street

NOODLES & COMPANY

GET TACO GO JOHN'S

McDonald's

Vern Eide HONDA

INTERSTATE 229

Hilton Garden Inn

INTERSTATE 229

TRAIL RIDGE SENIOR LIVING COMMUNITY

Avera

HOMWOOD SUITES BY HILTON WELLS FARGO

BILLION AUTOMOTIVE FAMILY

Avera Behavioral Health

Holiday Inn Express

BIG MILKYWAY

69<sup>th</sup> Street

South Louise Avenue

SANFORD HEALTH Lewis

Avera

TownePlace SUITES Marriott

kBar N Bar & Grill Holiday

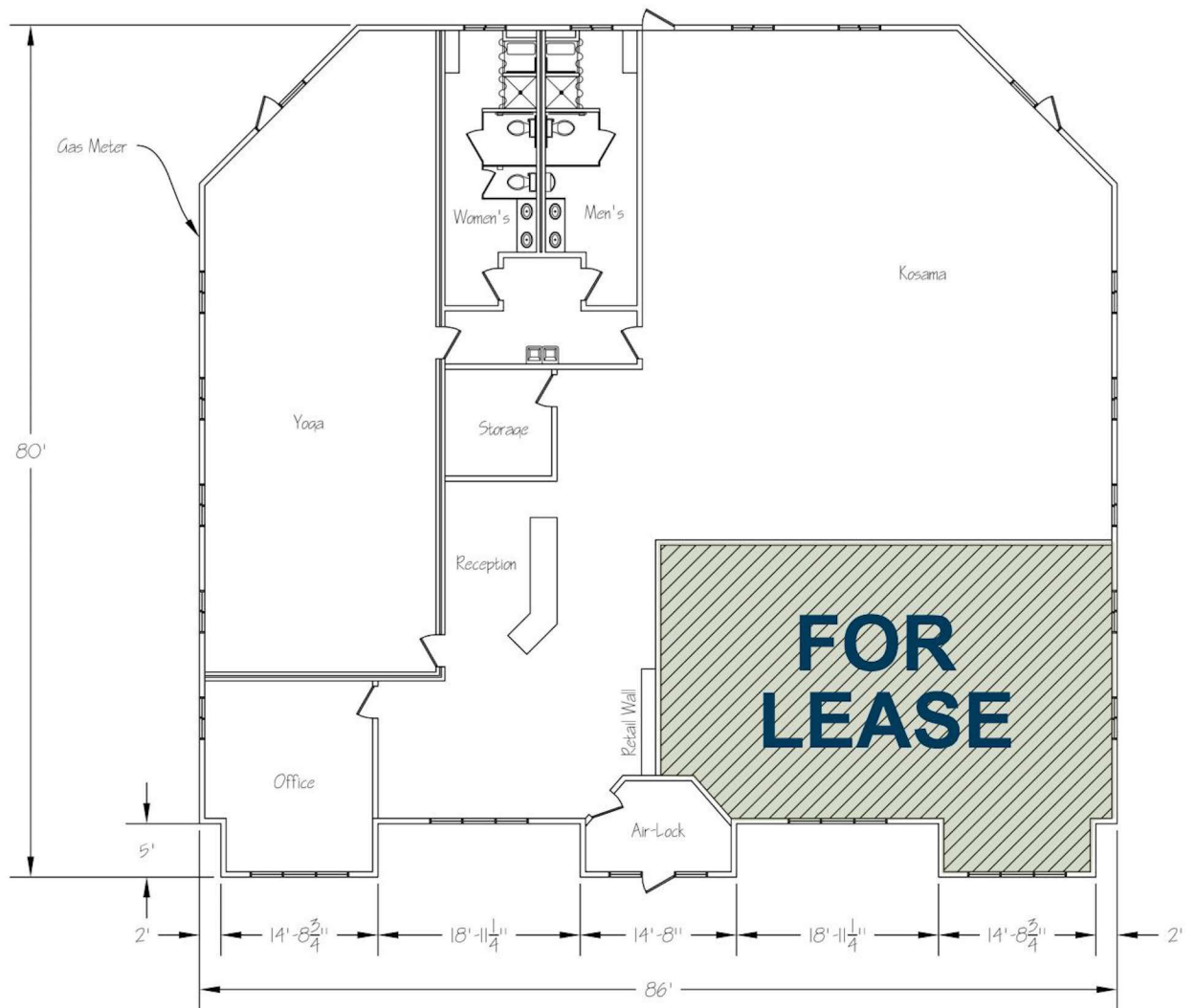
SECURITY NATIONAL BANK

BALLERAENA Dance Studio

SITE [Arrow pointing to star]

koSama complete body transformation

HARRISBURG EXPLORER ELEMENTARY



# PLATINUM CENTRE

- Available suite has 43 feet of frontage!
- 1,274 square feet available for lease.
- Space will have door on north endcap from parking lot. Tenant also has ability to add a second entrance from the common vestibule.
- Building is zoned 'O-Office' which allows for office, professional services and light retail (RE-1) users.
- Shared parking amongst all Platinum Centre buildings.