

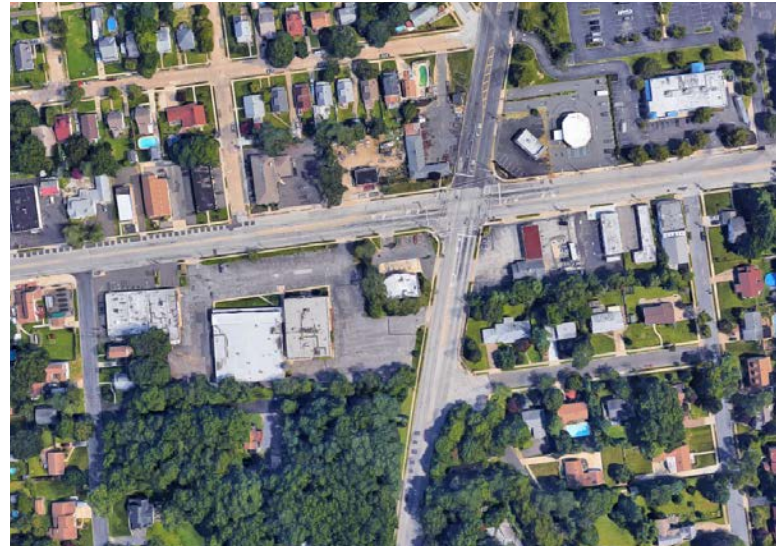


## 4 Haddonfield Road

Cherry Hill, New Jersey

### Property Description

- 30,000± SF, two building retail / office / medical complex
  - 17,000± SF, two-story building, elevator served
  - 13,000± SF, one-story building
- 3± acre site with entrances on both Haddonfield Road and Maple Avenue
- Divisible to numerous suites
- Direct access suites available
- Zoned B1 - Neighborhood Business Zone
- Newly remodeled lobby and elevator
- 9' ceiling height
- Taxes (2016) \$106,814.10



Sale Price **\$1,600,000**

For more information:

**Fred Meyer SIOR**

+1 856 234 9600 • fred.meyer@naimertz.com

**Jonathan Klear**

+1 856 234 9600 • jonathan.klear@naimertz.com

- Located at intersection of Haddonfield Road and Maple Avenue
- ½ mile from Cherry Hill Mall
- Adjacent to 7-11, near Super Wawa
- Surrounded by national retailers, popular restaurants, and Pennsauken Country Club

## Driving Distances to:

Route 38	1 mile
Route 130	1.6 miles
Route 73	2.2 miles
Route 70	2.5 miles
I-295	4.0 miles
NJ Turnpike	4.6 miles
Center City Philadelphia	7.5 miles

## Demographics

### Population

1 mi radius	12,555
3 mi radius	107,901
5 mi radius	306,565

### Households

1 mi radius	4,928
3 mi radius	40,669
5 mi radius	115,631

### Median Household Income

1 mi radius	\$81,629
3 mi radius	\$68,052
5 mi radius	\$60,254

For more information:

### Fred Meyer SIOR

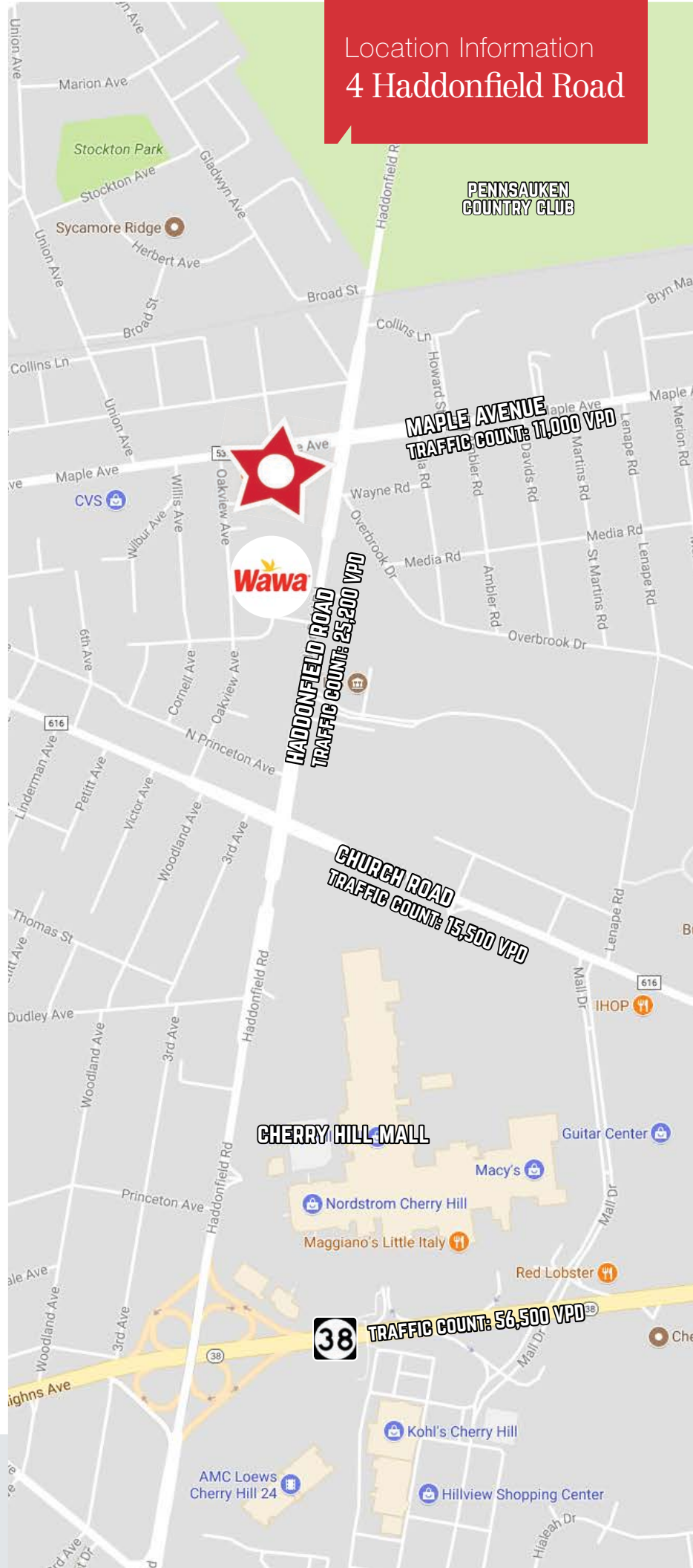
+1 856 234 9600 • fred.meyer@naimertz.com

### Jonathan Klear

+1 856 234 9600 • jonathan.klear@naimertz.com

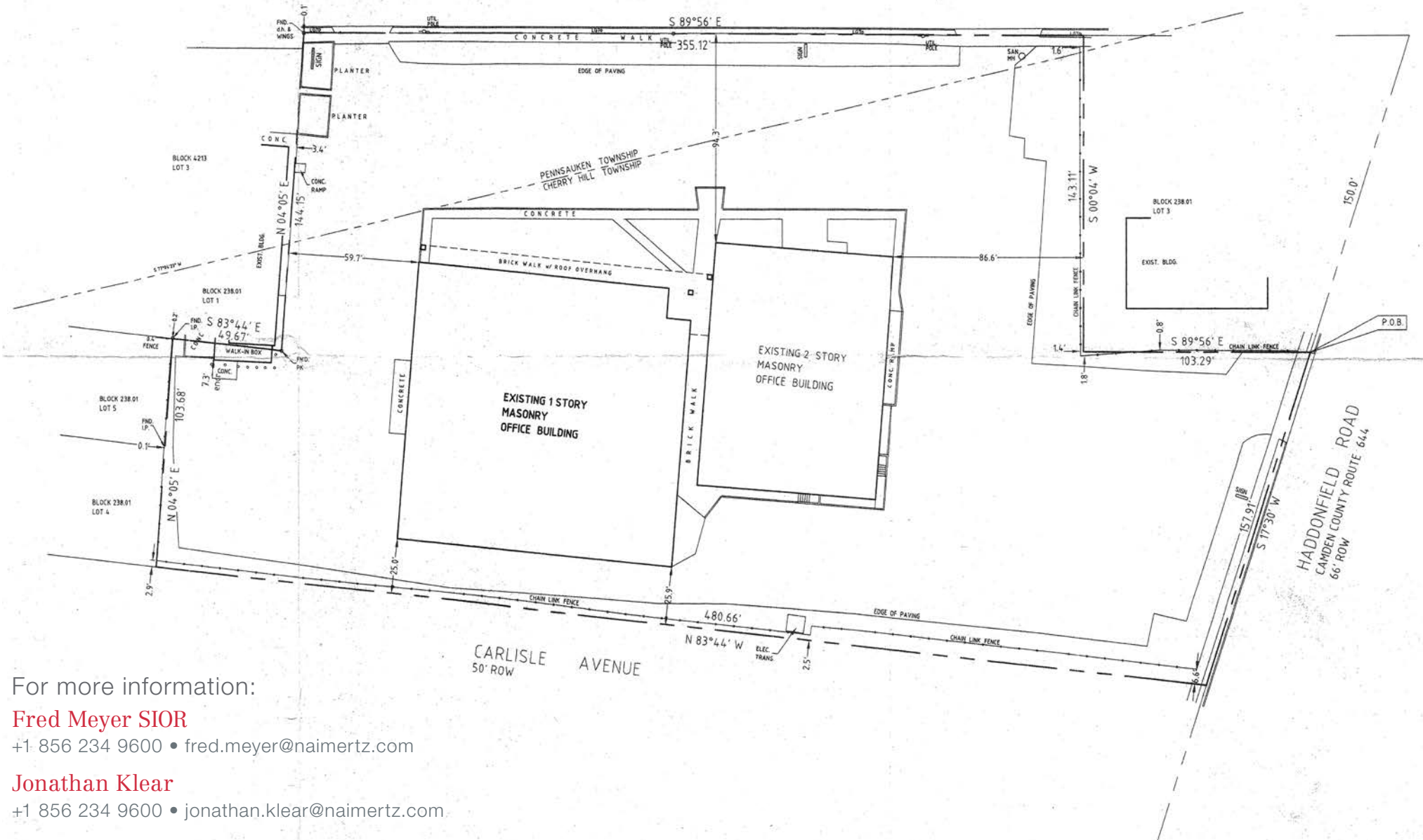
21 Roland Avenue  
Mount Laurel NJ 08054  
+1 856 234 9600

[naimertz.com](http://naimertz.com)





MAPLE AVENUE  
CAMDEN COUNTY ROUTE 537  
66' ROW



For more information:

**Fred Meyer SIOR**

+1 856 234 9600 • fred.meyer@naimertz.com

**Jonathan Klear**

+1 856 234 9600 • jonathan.klear@naimertz.com