

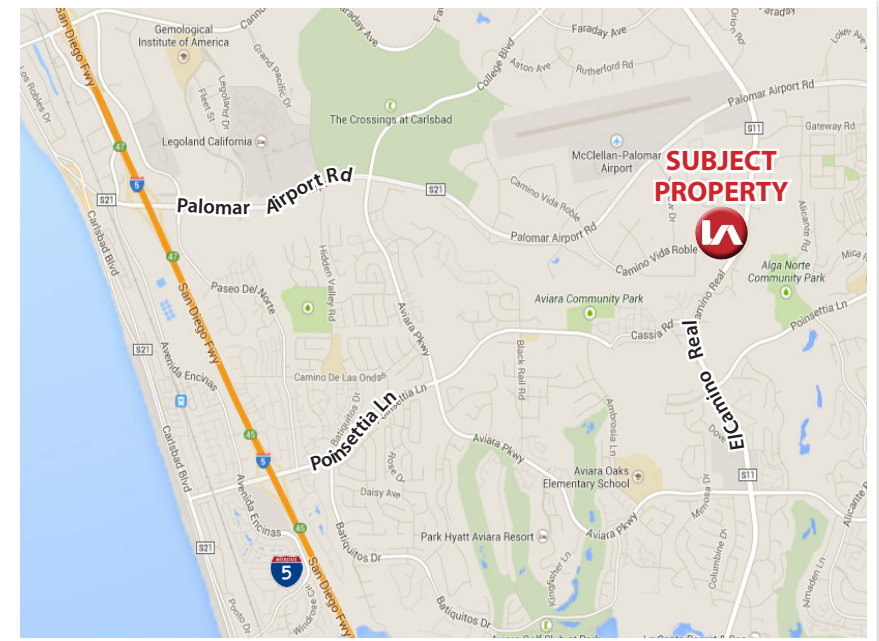
# INDUSTRIAL/R&D/OFFICE FOR LEASE PALOMAR BUSINESS CENTER

2380/2382 CAMINO VIDA ROBLE & 6353 EL CAMINO REAL | CARLSBAD, CA 92011



## BUSINESS CENTER AVAILABILITY & FEATURES

- » 1,701 SF - 1,949 SF Industrial Suites
- » Convenient Location
- » Frontage on Major Commercial Corridor
- » Nicely Landscaped
- » On-site Deli



DANIEL KNOKE  
(760) 929-7836  
dknoke@lee-associates.com  
DRE Lic#01215373

PETER MERZ  
(760) 448-1362  
pmerz@lee-associates.com  
DRE Lic#01269042

LEE & ASSOCIATES CRE SERVICES, INC. - NSDC  
1900 Wright Place, Suite 200  
Carlsbad, CA 92008  
www.lee-associates.com

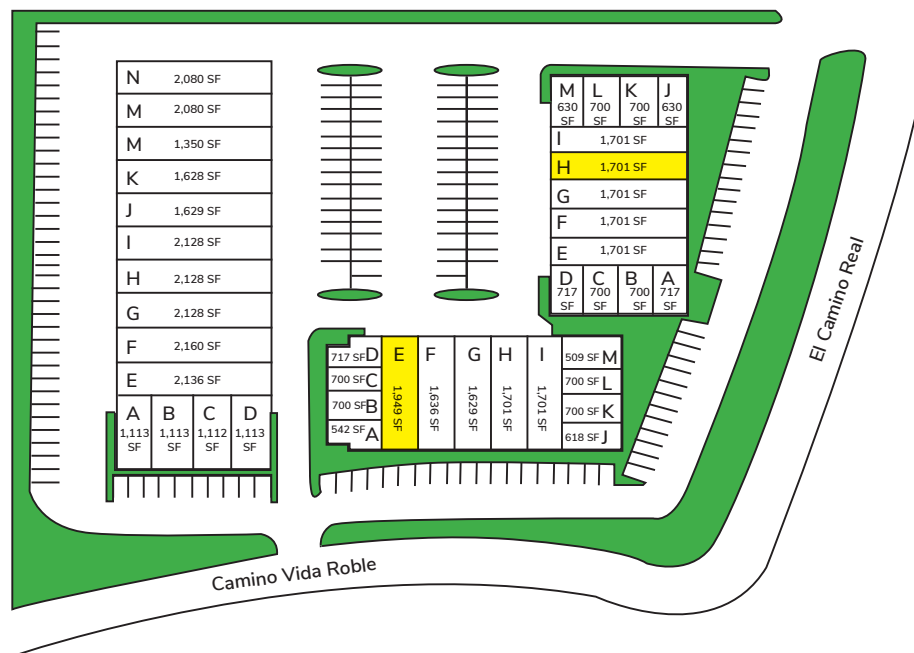
# INDUSTRIAL/R&D/OFFICE FOR LEASE PALOMAR BUSINESS CENTER

2380/2382 CAMINO VIDA ROBLE & 6353 EL CAMINO REAL | CARLSBAD, CA 92011

## Availability

2382 Camino Vida Roble					
Suite#	Total SF	Office/Restroom	Rent/SF*	Available	Access
E	1,949	Reception, 4 Offices, Warehouse & Restroom	\$1.18 MG*	Now	JX130 LokBox
6353 El Camino Real					
Suite#	Total SF	Office/Restroom	Rent/SF*	Available	Access
H	1,701	Large Reception Area, 1 Private Office, Warehouse & Restroom	\$1.25 MG*	Now	Call to Show

\*All units charged a common area maintenance charge (CAM) of approx. \$0.14 per SF



DANIEL KNOKE  
(760) 929-7836  
dknoke@lee-associates.com  
DRE Lic#01215373

PETER MERZ  
(760) 448-1362  
pmerz@lee-associates.com  
DRE Lic#01269042

LEE & ASSOCIATES CRE SERVICES, INC. - NSDC  
1900 Wright Place, Suite 200  
Carlsbad, CA 92008  
www.lee-associates.com

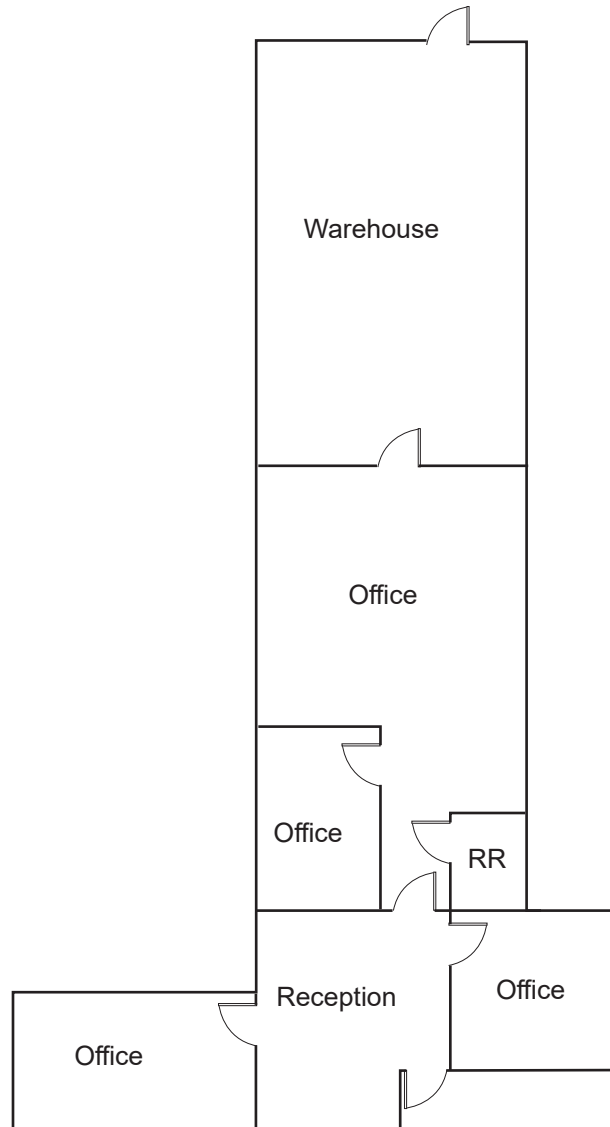
# INDUSTRIAL/R&D/OFFICE FOR LEASE PALOMAR BUSINESS CENTER

2380/2382 CAMINO VIDA ROBLE & 6353 EL CAMINO REAL | CARLSBAD, CA 92011

## Floor Plan

### 2382 Camino Vida Roble

Suite E - 1,949 SF



DANIEL KNOKE  
(760) 929-7836  
dknoke@lee-associates.com  
DRE Lic#01215373

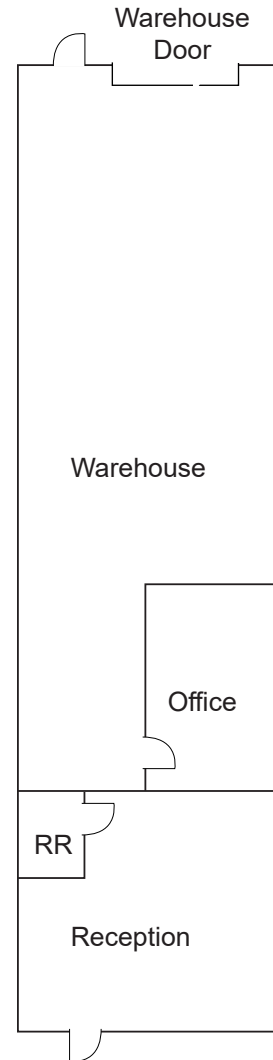
PETER MERZ  
(760) 448-1362  
pmerz@lee-associates.com  
DRE Lic#01269042

LEE & ASSOCIATES CRE SERVICES, INC. - NSDC  
1900 Wright Place, Suite 200  
Carlsbad, CA 92008  
www.lee-associates.com

## Floor Plan

### 6353 El Camino Real

Suite H - 1,701 SF



DANIEL KNOKE  
(760) 929-7836  
dknoke@lee-associates.com  
DRE Lic#01215373

PETER MERZ  
(760) 448-1362  
pmerz@lee-associates.com  
DRE Lic#01269042

LEE & ASSOCIATES CRE SERVICES, INC. - NSDC  
1900 Wright Place, Suite 200  
Carlsbad, CA 92008  
www.lee-associates.com