

**FOR LEASE | ± 3,355 SF**  
**15641-D Chemical Lane**  
**Huntington Beach, CA**

**Voit**  
REAL ESTATE SERVICES



## PROPERTY FEATURES

- Approximately ±1,545 SF Office Area
- Approximately ±915 SF Bonus Mezzanine Storage
- Reception, 4 Privates, Open Office Area, Restroom and 2 Coffee Bars
- 18.5' Warehouse Clearance
- 1 - 14' x 14' Ground Level Roll-Up Loading Door
- Drive Around Building with Good Truck Access
- 200 Amps Electrical Service
- Excellent Freeway Access

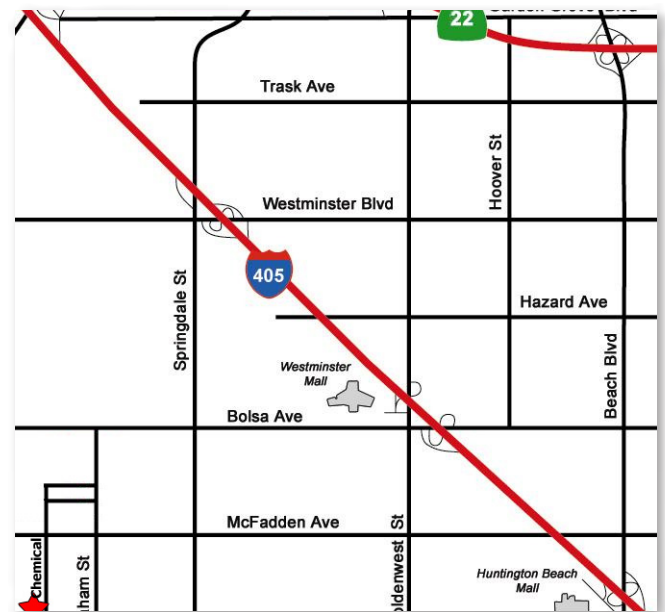
### MIKE BOUMA, SIOR

Senior Vice President

Lic #01070753

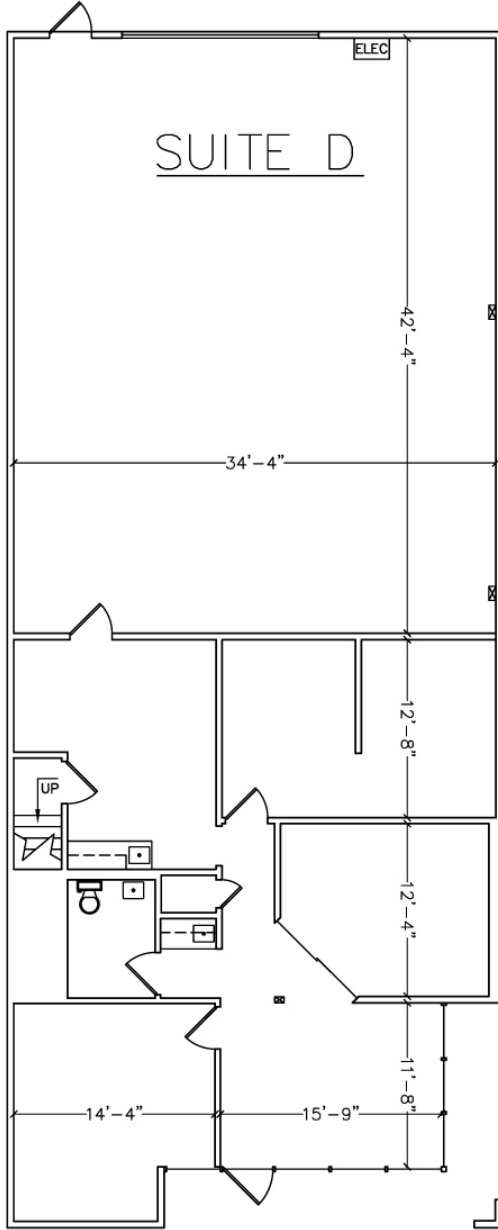
714.935.2340

mbouma@voitco.com

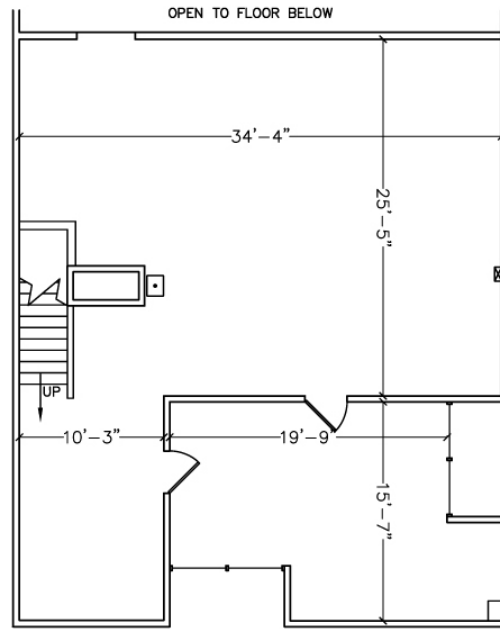


# FOR LEASE | ± 3,355 SF

15641-D Chemical Lane  
Huntington Beach, CA



## MEZZANINE



### MIKE BOUMA, SIOR

Senior Vice President

Lic #01070753

714.935.2340

mbouma@voitco.com

# Voit

REAL ESTATE SERVICES

2400 E. Katella Avenue Suite 750, Anaheim CA 92806 • 714.978.7880 • 714.978.9431 Fax • Lic #01333376 | www.voitco.com

**CORFAC**  
International

The information contained herein has been obtained from sources we deem reliable. While we have no reason to doubt its accuracy, we do not guarantee it. ©2013 Voit Real Estate Services, Inc. All Rights Reserved. Real People. Real Solutions.® is a registered trademark of Voit Real Estate Services.