



**FOR LEASE**

# West Charleston Business Center

1941 SAVAGE ROAD  
CHARLESTON, SC 29407

## CHARLESTON OFFICE ADVISORS

**Pete Harper, CCIM**

(843) 329-0108

[PHarper@Lee-Associates.com](mailto:PHarper@Lee-Associates.com)

**Cameron Yost**

(843) 814-7236

[CYost@Lee-Associates.com](mailto:CYost@Lee-Associates.com)

**Reid Davis, CCIM, SIOR**

(843) 277-4326

[RDavis@Lee-Associates.com](mailto:RDavis@Lee-Associates.com)



960 Morrison Drive, Suite 400 Charleston, SC 29403

(843) 747-1200

[Lee-Charleston.com](http://Lee-Charleston.com)

# Offering Summary

## ASSET OVERVIEW

### PROPERTY OVERVIEW

Excellent opportunity to lease flex office space in West Ashley. The suite contains two (2) offices, a conference room, a server room, and open area.

### LOCATION OVERVIEW

Located half (1/2) a mile from I-526 on Highway 61, West Charleston Business Center has excellent visibility in a high growth area of West Ashley. I-26, Downtown Charleston, Roper St. Francis Hospital, banking, shopping, and restaurants are all within a few minutes drive of the property.



### ADDRESS

1941 Savage Road  
Charleston, SC 29407

### PARCEL ID

351-02-00-057

### SUITE AVAILABLE

Suite 400-D

### SF AVAILABLE

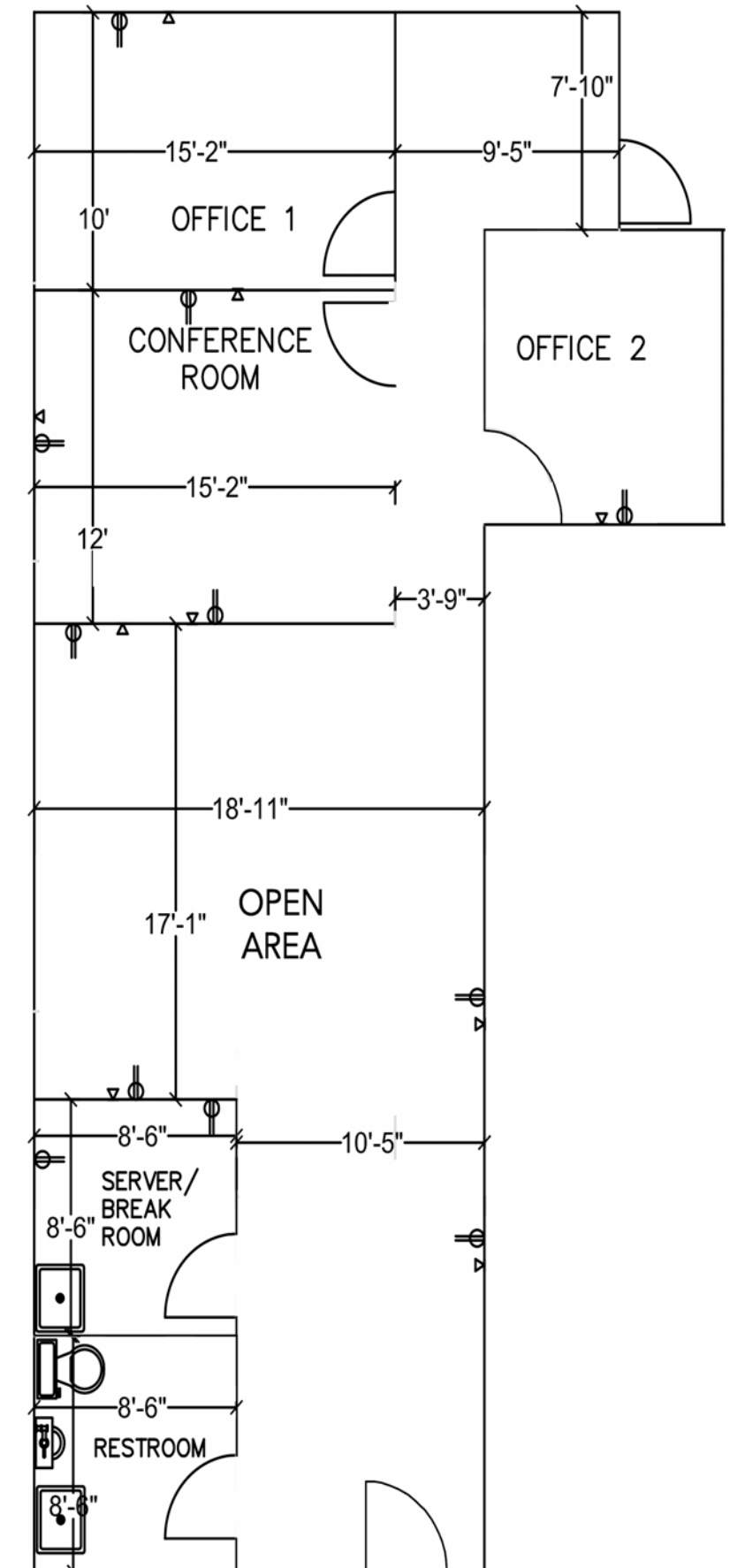
1,329 SF

### LEASE RATE

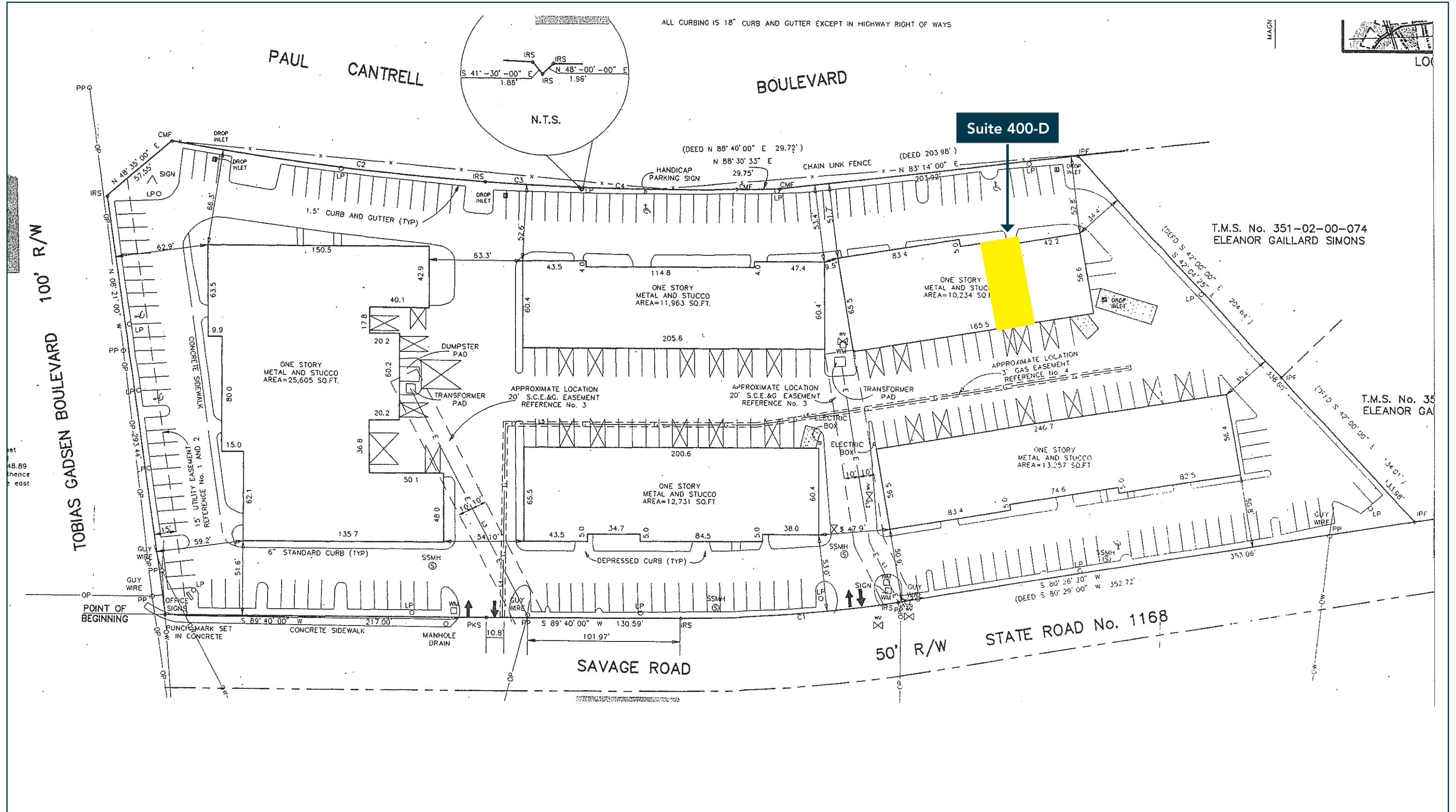
\$18.00/SF, Modified Gross

### PARKING

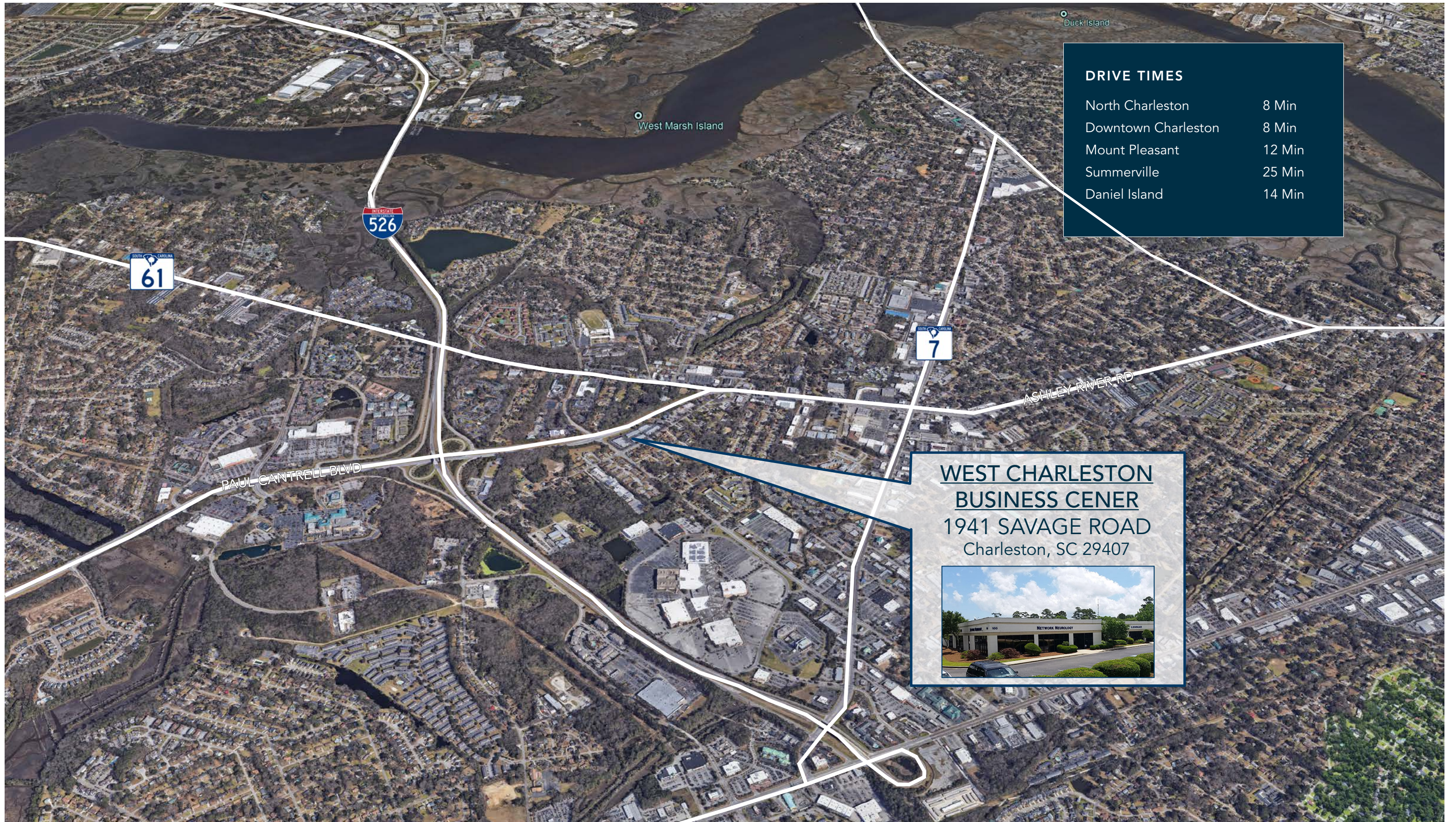
Surface



# Site Plan



# Aerial View



DRIVE TIMES	
North Charleston	8 Min
Downtown Charleston	8 Min
Mount Pleasant	12 Min
Summerville	25 Min
Daniel Island	14 Min

# West Charleston Business Center

1941 SAVAGE ROAD, CHARLESTON, SC 29407

---

## CHARLESTON OFFICE ADVISORS

**Pete Harper, CCIM**

(843) 329-0108

PHarper@Lee-Associates.com

**Cameron Yost**

(843) 814-7236

CYost@Lee-Associates.com

**Reid Davis, CCIM, SIOR**

(843) 277-4326

RDavis@Lee-Associates.com