

For Sale or Lease

Owner/User Or Investor
6,000 SF



Wollochet Business Park

5715 Wollochet Dr NW, Gig Harbor, WA 98335

- Total SF: +/- 6,000 Building; 35,945 SF Land
- Quiet business park setting
- Perfect for owner/user or investor; suites available 150 SF to +/- 4,000 SF
- Flexible open & private office configurations
- Warehouse door and lower level storage
- Easy access from Highway 16 via Wollochet off-ramp
- Zoning: R-5.
- Current rents approx. \$39,000/year
- Upside potential from lease-up of vacant space and rent increases (most tenants month-to-month)
- Price: \$997,950 (well below replacement value)

For more information:

Kim Marvik

+1 253 203 1325 • kmarvik@nai-psp.com



BELLEVUE | SEATTLE | TACOMA

1201 Pacific Avenue, Suite 1703
Tacoma, WA 98402
+1 253 383 3100
nai-psp.com

THE INFORMATION CONTAINED HEREIN HAS BEEN GIVEN TO US BY THE OWNER OF THE PROPERTY OR OTHER SOURCES WE DEEM RELIABLE, WE HAVE NO REASON TO DOUBT ITS ACCURACY, BUT WE DO NOT GUARANTEE IT. ALL INFORMATION SHOULD BE VERIFIED PRIOR TO PURCHASE OR LEASE.

Office for Sale or Lease

Wollochet Business Park



The property is located in Pierce County in Gig Harbor, Washington. Gig Harbor is located along State Route 16 about 6 miles from Interstate 5 over the Tacoma Narrows Bridge. Tacoma can be reached in just under 20 minutes and Seattle just under an hour (depending on commute time).



Photo Credit - Sheila Sund



Building Lobby



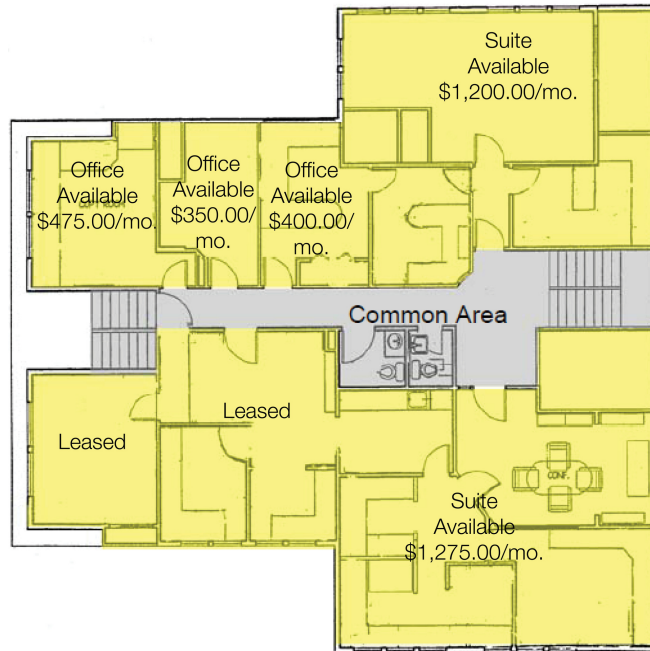
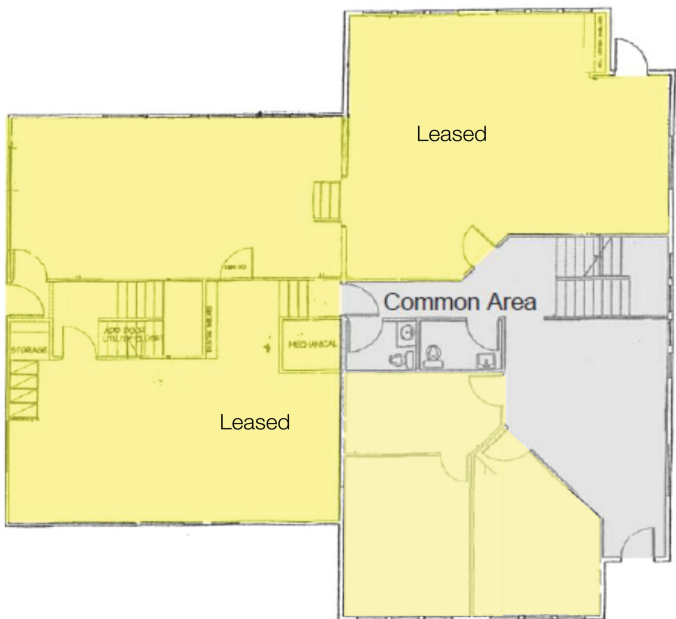
1201 Pacific Avenue, Suite 1703
Tacoma, WA 98402
+1 253 383 3100
nai-psp.com

BELLEVUE | SEATTLE | TACOMA

THE INFORMATION CONTAINED HEREIN HAS BEEN GIVEN TO US BY THE OWNER OF THE PROPERTY OR OTHER SOURCES WE DEEM RELIABLE, WE HAVE NO REASON TO DOUBT ITS ACCURACY, BUT WE DO NOT GUARANTEE IT. ALL INFORMATION SHOULD BE VERIFIED PRIOR TO PURCHASE OR LEASE.

Office for Sale

Wollochet Business Park



1st Floor

2nd Floor



Back of Building & Lower Storage Access



Wollochet Business Park Monument Sign



BELLEVUE | SEATTLE | TACOMA

1201 Pacific Avenue, Suite 1703
Tacoma, WA 98402
+1 253 383 3100
nai-psp.com

THE INFORMATION CONTAINED HEREIN HAS BEEN GIVEN TO US BY THE OWNER OF THE PROPERTY OR OTHER SOURCES WE DEEM RELIABLE, WE HAVE NO REASON TO DOUBT ITS ACCURACY, BUT WE DO NOT GUARANTEE IT. ALL INFORMATION SHOULD BE VERIFIED PRIOR TO PURCHASE OR LEASE.