

AUBURN ROAD PONTIAC, MICHIGAN

LAND FOR SALE
5.41 Acres Available



**SIGNATURE
ASSOCIATES**
KNOW SIGNATURE | KNOW RESULTS

BUILD-TO-SUIT OPPORTUNITY



PROPERTY FEATURES

- 5.41 acres available
- All utilities available on site
- Zoned C-3 (Industrial possible)
- Outdoor storage possible
- Irregular dimensions
- Build-to-suit for sale
- Sale Price: \$1,100,000 (\$220,000/acre)



For more information, please contact:

JOE BANYAI
(248) 948 0108
jbanyai@signatureassociates.com

PAUL HOGE
(248) 948 0103
paulhoge@signatureassociates.com

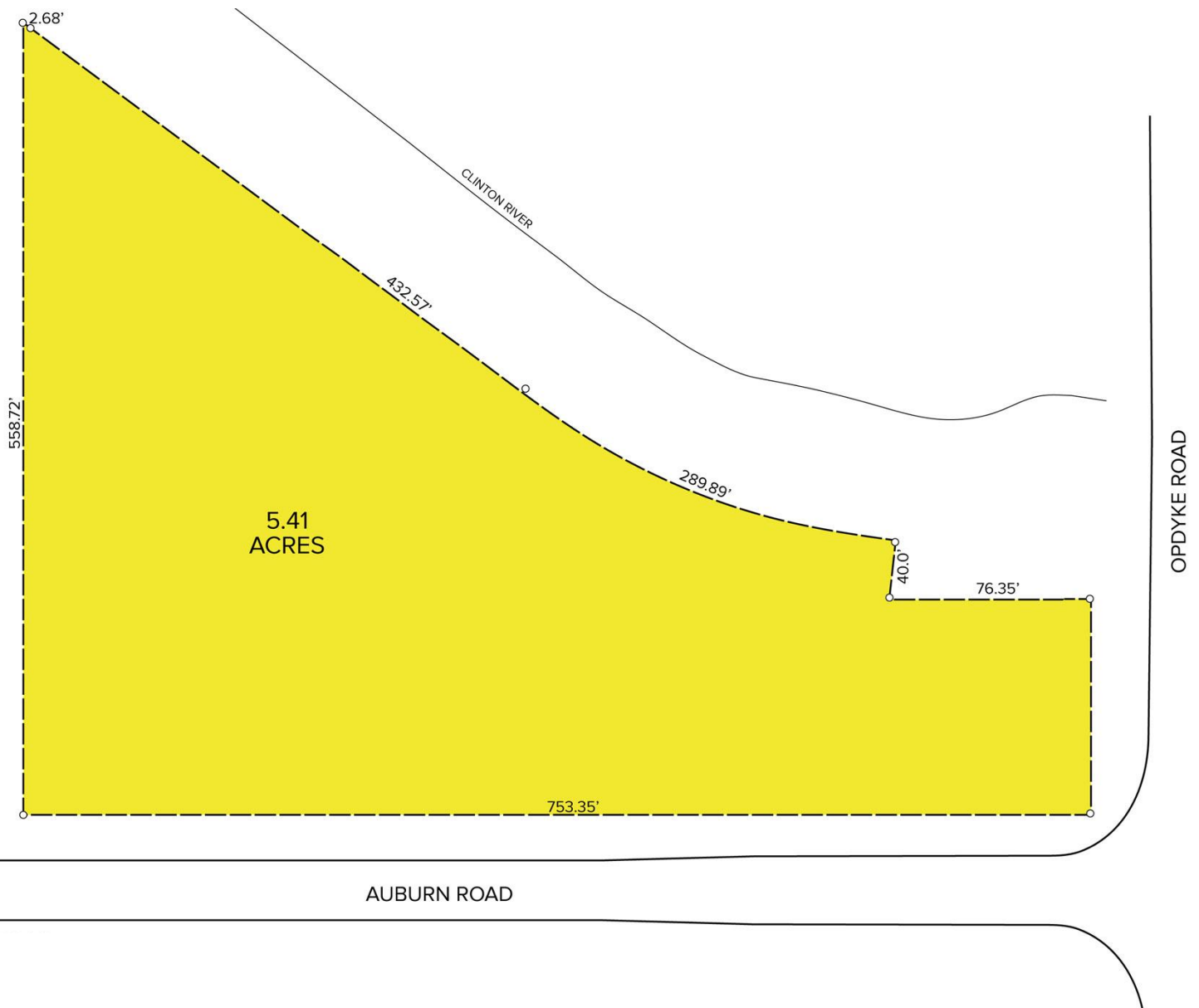
SIGNATURE ASSOCIATES
One Towne Square, Suite 1200
Southfield, MI 48076
www.signatureassociates.com

Auburn Road – Pontiac, Michigan

Land For Sale or Lease

5.41
Acres
AVAILABLE

Site Plan



For more information, please contact:

JOE BANYAI
(248) 948 0108
jbanyai@signatureassociates.com

PAUL HOGE
(248) 948 0103
paulhoge@signatureassociates.com

SIGNATURE ASSOCIATES
One Towne Square, Suite 1200
Southfield, MI 48076
www.signatureassociates.com