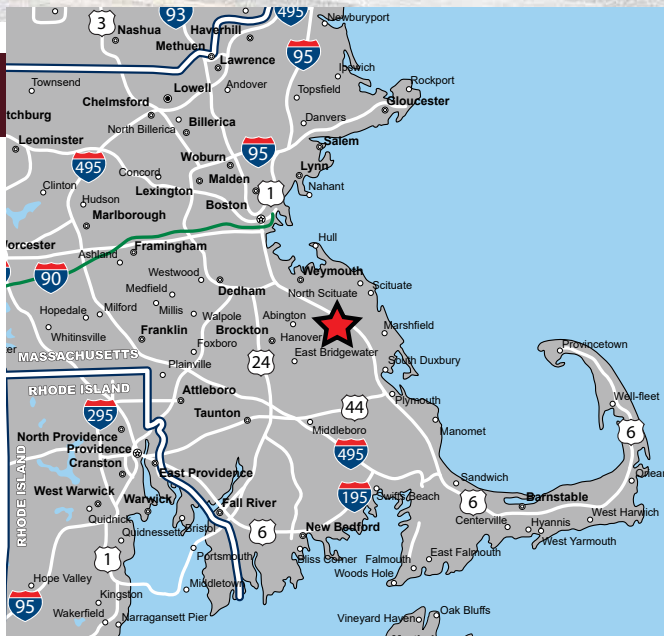


# FORMER AUTO DEALERSHIP

2144 Washington Street (Route 53), Hanover, Massachusetts



**AVAILABLE FOR LEASE**

## PROPERTY HIGHLIGHTS

- » Former Land Rover Dealership
- » 2.3 Acre Site
- » 14,000 +/- SF Building
- » Ideal Auto Retail/Service Location
- » Prime Location Minutes off Route 3
- » 4,588 SF Retail/Showroom
- » 7,100 SF Repair Shop and Parts Department
- » 2,000 SF Second Floor Office
- » 80+ Parking Spaces

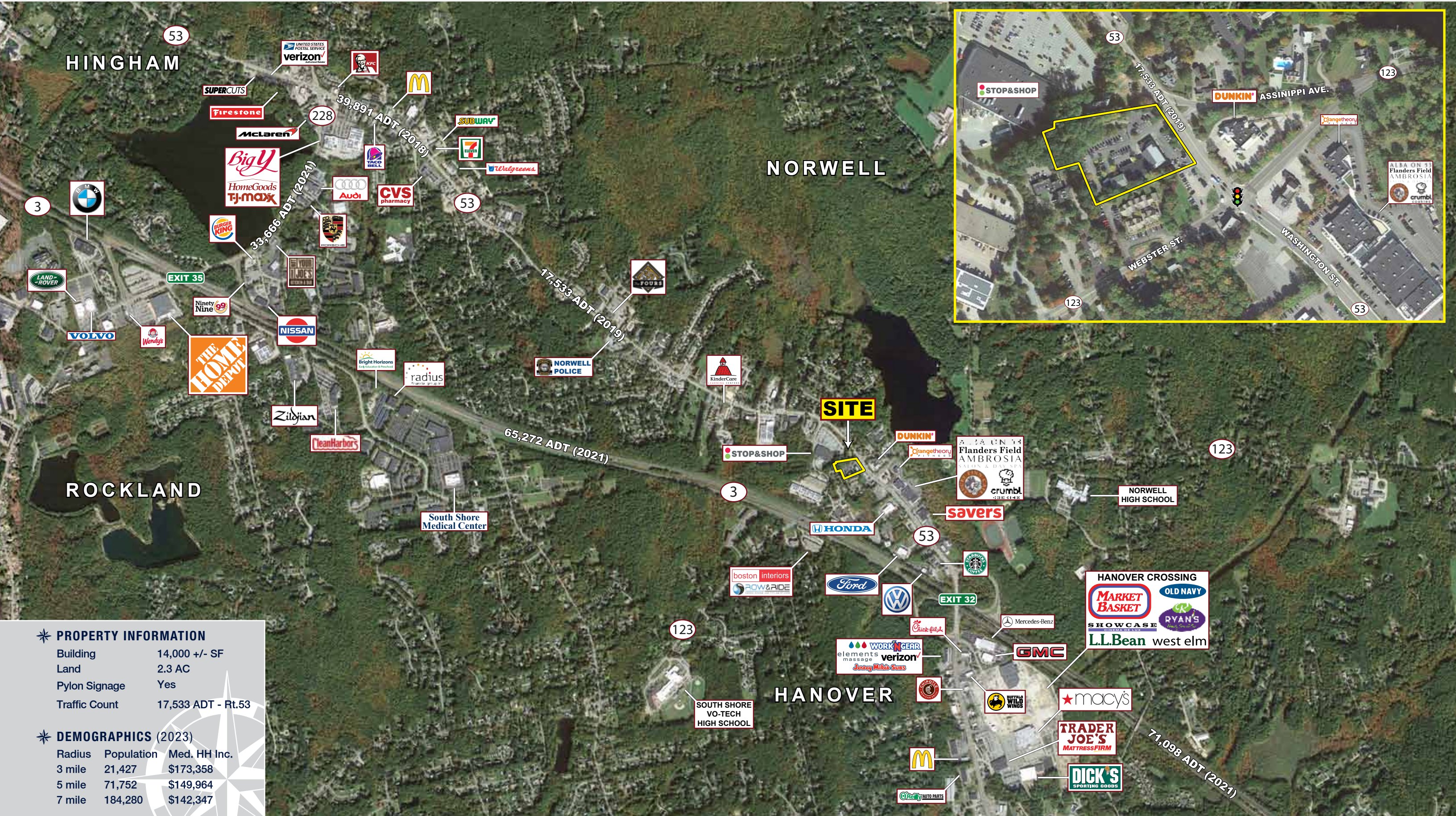


# FORMER AUTO DEALERSHIP

2144 Washington Street (Route 53), Hanover, Massachusetts



**EASTERN**  
RETAIL PROPERTIES



**PROPERTY INFORMATION**

Building	14,000 +/- SF
Land	2.3 AC
Pylon Signage	Yes
Traffic Count	17,533 ADT - Rt.53

**DEMOGRAPHICS (2023)**

Radius	Population	Med. HH Inc.
3 mile	21,427	\$173,358
5 mile	71,752	\$149,964
7 mile	184,280	\$142,347

# FORMER AUTO DEALERSHIP

2144 Washington Street (Route 53), Hanover, Massachusetts



**EASTERN**  
RETAIL PROPERTIES



123

WEBSTER ST.

53

WASHINGTON ST.

**2.3 AC**



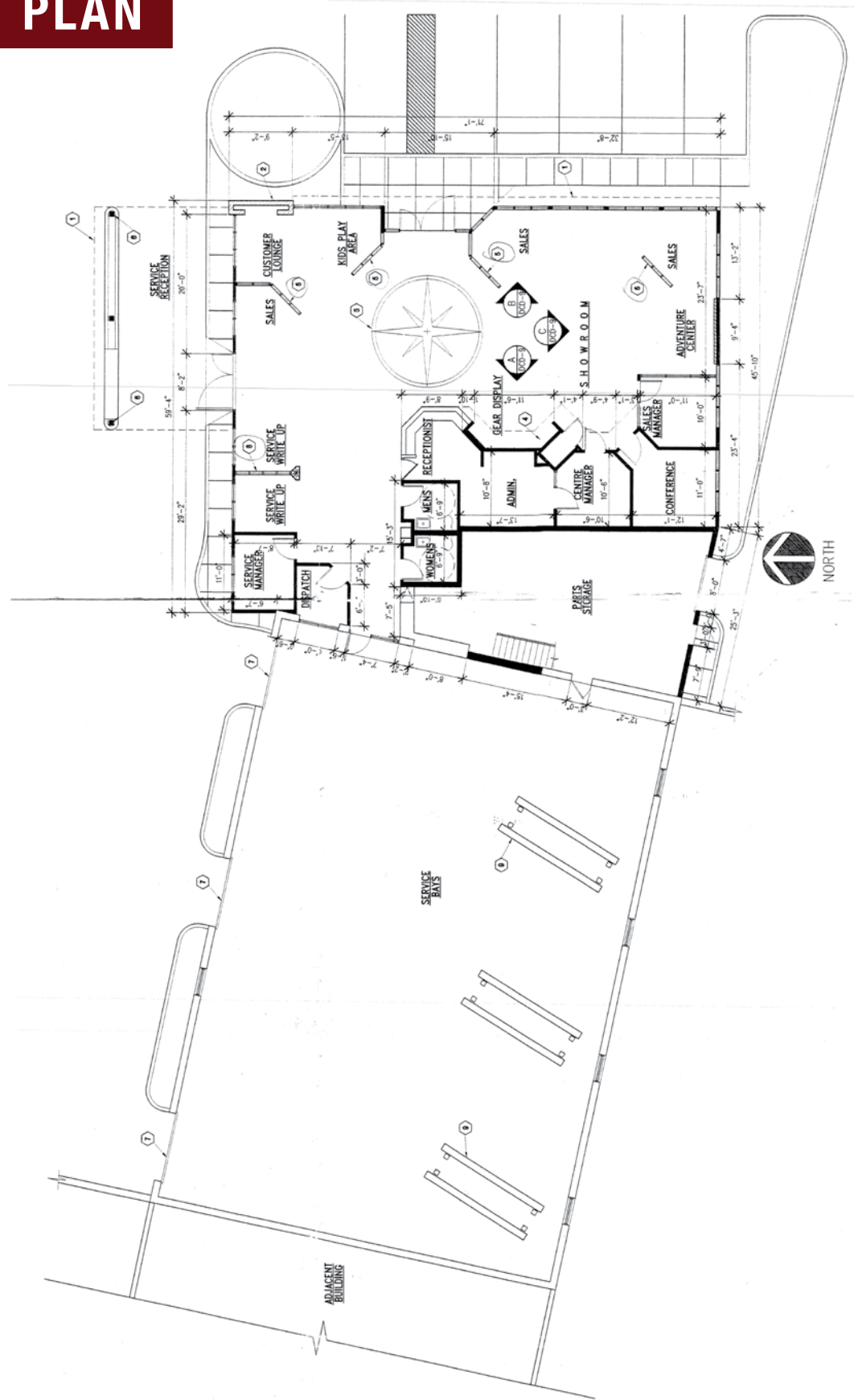
# FORMER AUTO DEALERSHIP

2144 Washington Street (Route 53), Hanover, Massachusetts

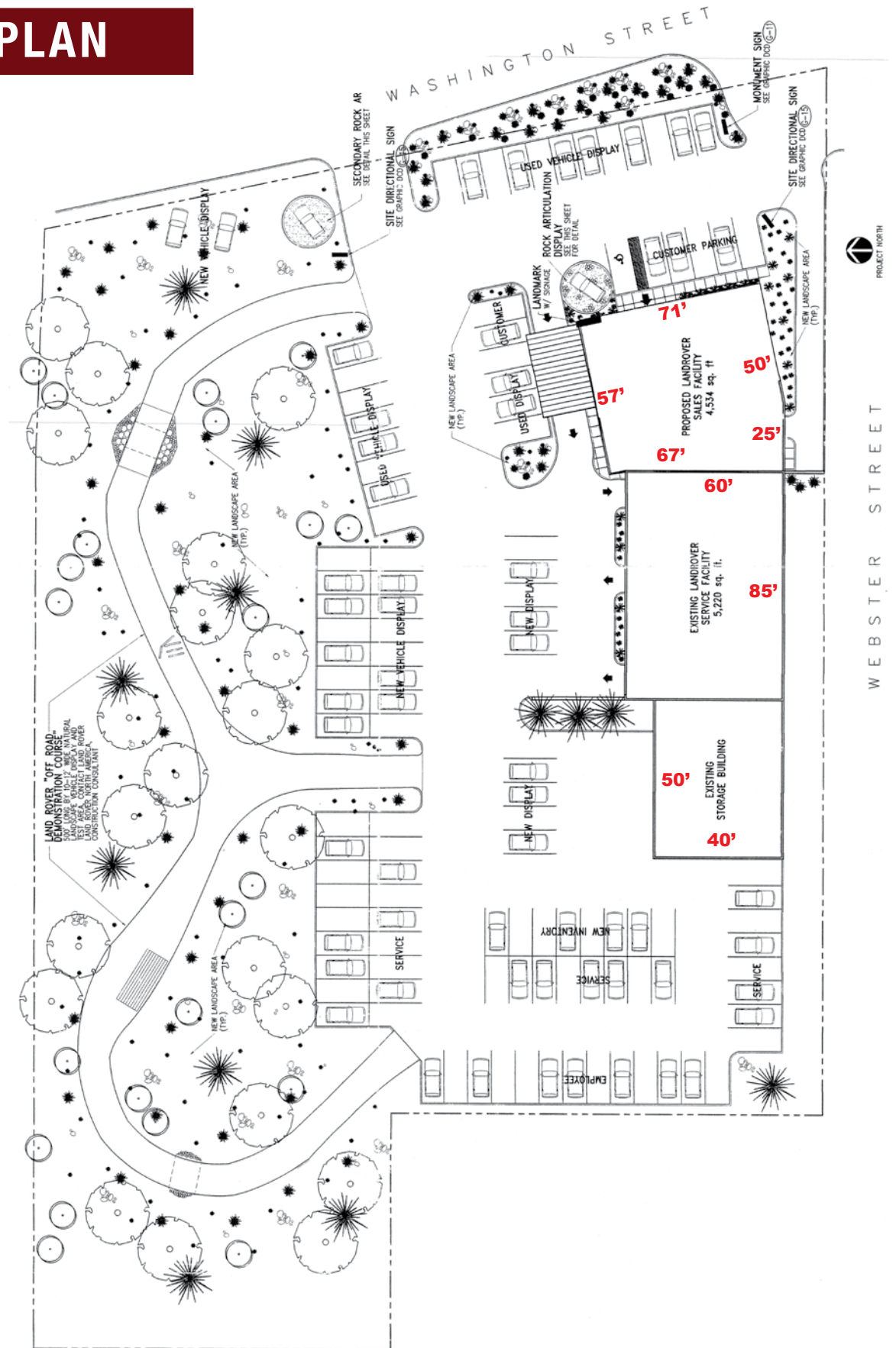


**EASTERN**  
RETAIL PROPERTIES

## BUILDING PLAN



## SITE PLAN



# FORMER AUTO DEALERSHIP

2144 Washington Street (Route 53), Hanover, Massachusetts



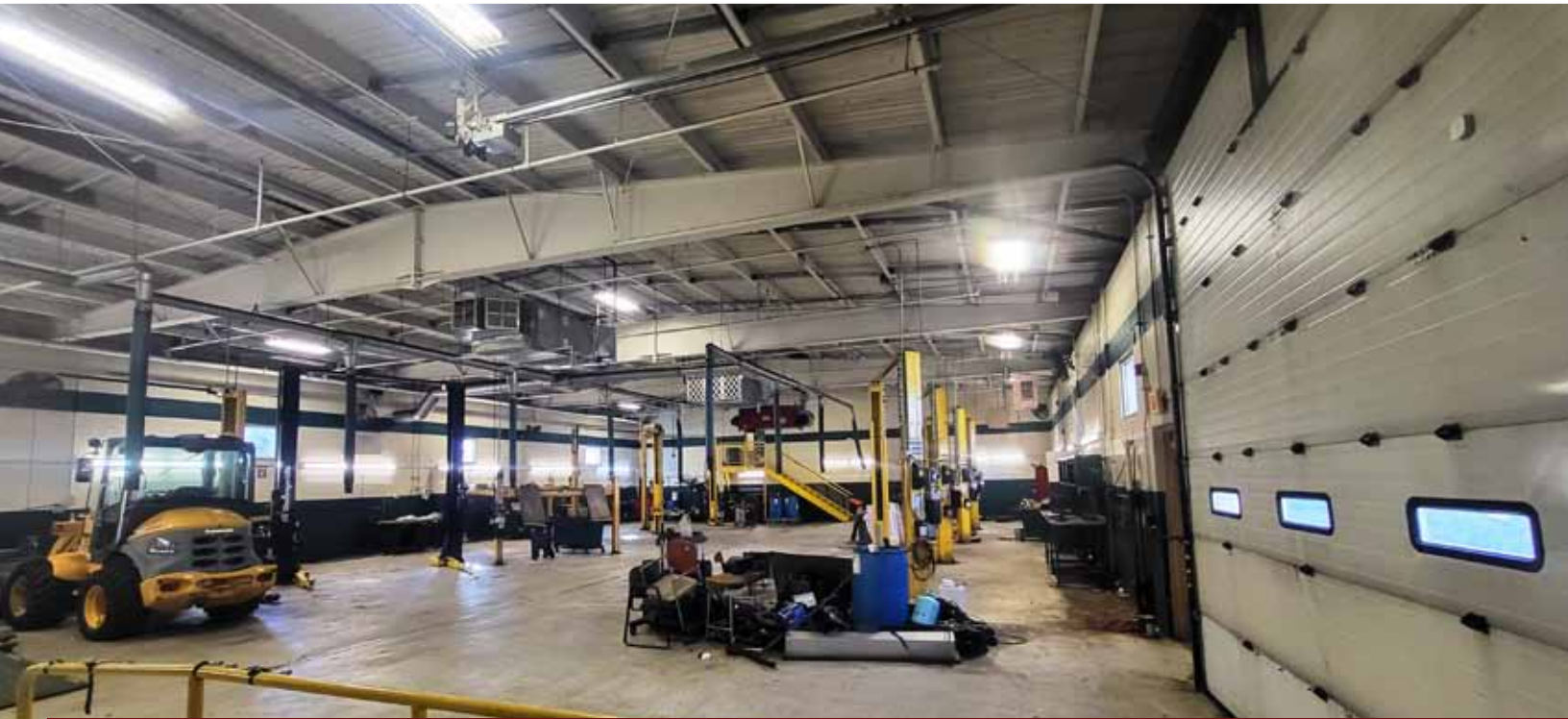
**EASTERN**  
RETAIL PROPERTIES



# FORMER AUTO DEALERSHIP

2144 Washington Street (Route 53), Hanover, Massachusetts





Available for Lease - 2144 Washington Street (Route 53), Hanover, Massachusetts



FOR MORE INFORMATION CONTACT:

**Vin Albanese**

781.849.9013 (Office) + 617.413.1193 (Cell)

valbanese@easternretail.com

P 781.849.9010 + F 781.849.9050 + [www.easternretail.com](http://www.easternretail.com) + 25 Braintree Hill Office Park, Suite 305 + Braintree, MA 02184

The information above has been obtained from sources believed reliable. While we do not doubt its accuracy, we have not verified it and make no guarantee, warranty or representation about it. It is your responsibility to independently confirm its accuracy and completeness. Any projections, opinions, assumptions or estimates used are for example only and do not represent the current or future performance of the property. The value of this transaction to you depends on tax and other factors, which should be evaluated by your tax and financial advisors. You and your advisors should conduct a careful, independent investigation of the property to determine to your satisfaction, the suitability of the property for your needs.