



±61,156 SF INDUSTRIAL BUILDING ON ±3.3 AC

AVAILABLE

2500 YORK ROAD | ELK GROVE VILLAGE, IL 60007

ROSS LEHRMAN
847.588.5671
ross.lehrman@transwestern.com

JOE KARMIN
847.588.5670
joe.karmin@transwestern.com

JUSTIN LERNER, SIOR
847.588.5665
justin.lerner@transwestern.com



±61,156 SF INDUSTRIAL BUILDING ON ±3.3 AC

AVAILABLE

2500 YORK ROAD | ELK GROVE VILLAGE, IL 60007



SPECIFICATIONS

- Building Size: ±61,156 SF
- Land Area: ±3.3 AC
- Warehouse Size: ±45,336 SF
- Office Size: ±10,020 SF
- Mezzanine Size: ±5,800 SF
- Clear Height: 24' - 38'6"
- Loading: 2 Interior Docks / 3 Drive-in Doors
- Cranes: (2) 5-Ton Cranes / (2) 2-Ton Cranes
- Power: 1200A
- Parking ±110 Cars



HIGHLIGHTS

- A DAYTON STREET PARTNERS INVESTMENT
- 3.3 acres of land seconds away from O'Hare Airport
- DuPage County section of Elk Grove Village
- 21,156 vehicles per day on Elmhurst Road
- Standalone facility on large land site
- Hard-to-find crane building
- Outside storage available

ROSS LEHRMAN
847.588.5671
ross.lehrman@transwestern.com

JOE KARMIN
847.588.5670
joe.karmin@transwestern.com

JUSTIN LERNER, SIOR
847.588.5665
justin.lerner@transwestern.com

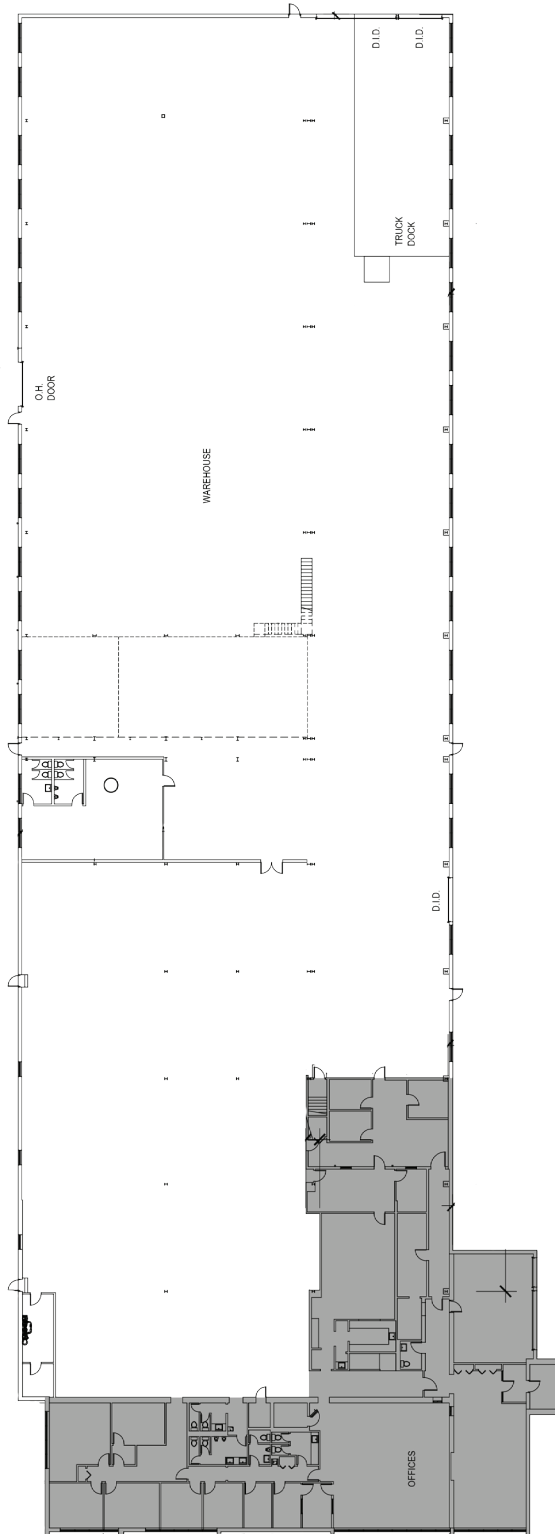
±61,156 SF INDUSTRIAL BUILDING ON ±3.3 AC

AVAILABLE

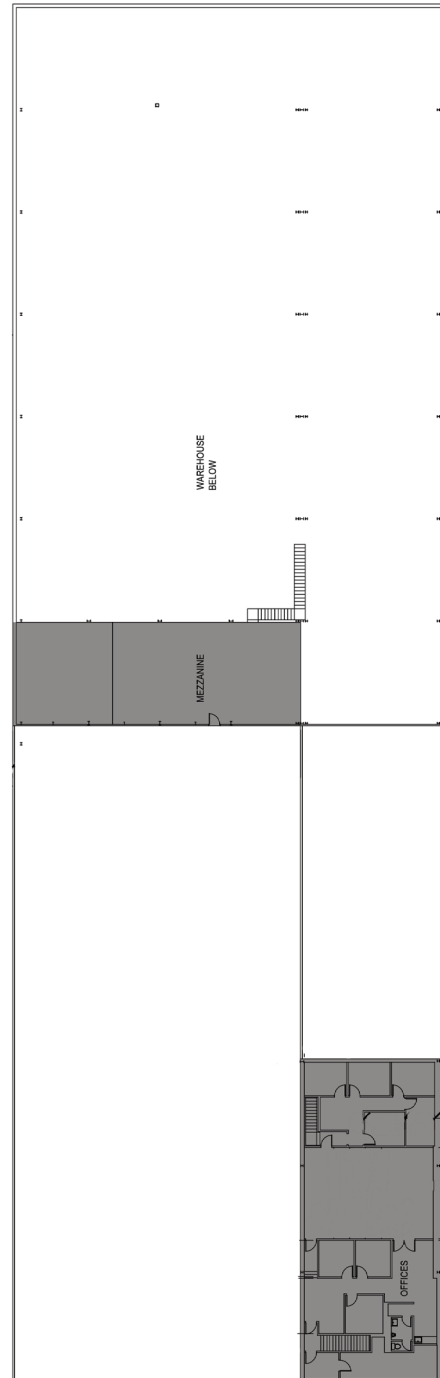
2500 YORK ROAD | ELK GROVE VILLAGE, IL 60007



FIRST FLOOR PLAN



SECOND FLOOR PLAN



ROSS LEHRMAN
847.588.5671
ross.lehrman@transwestern.com

JOE KARMIN
847.588.5670
joe.karmin@transwestern.com

JUSTIN LERNER, SIOR
847.588.5665
justin.lerner@transwestern.com