

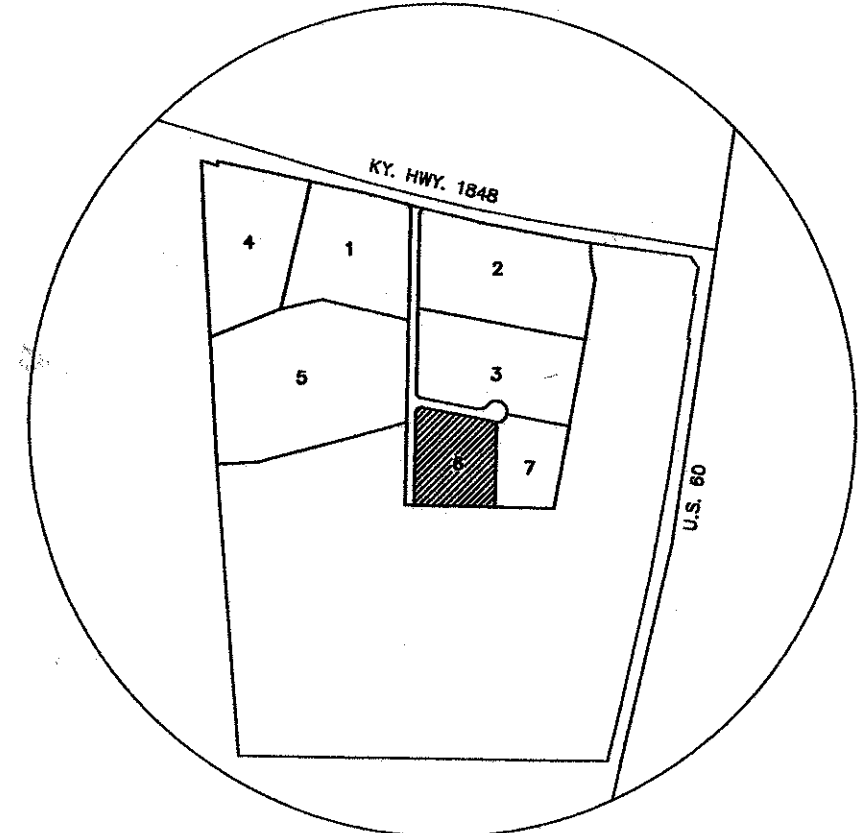
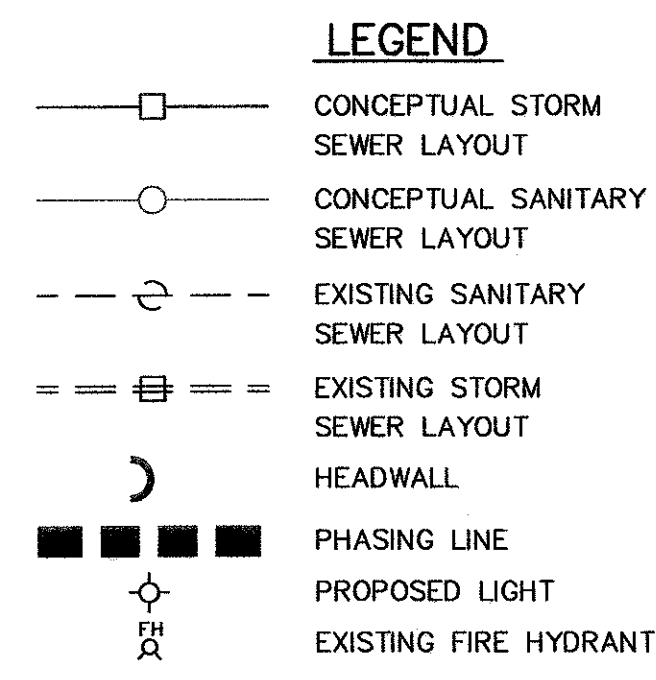
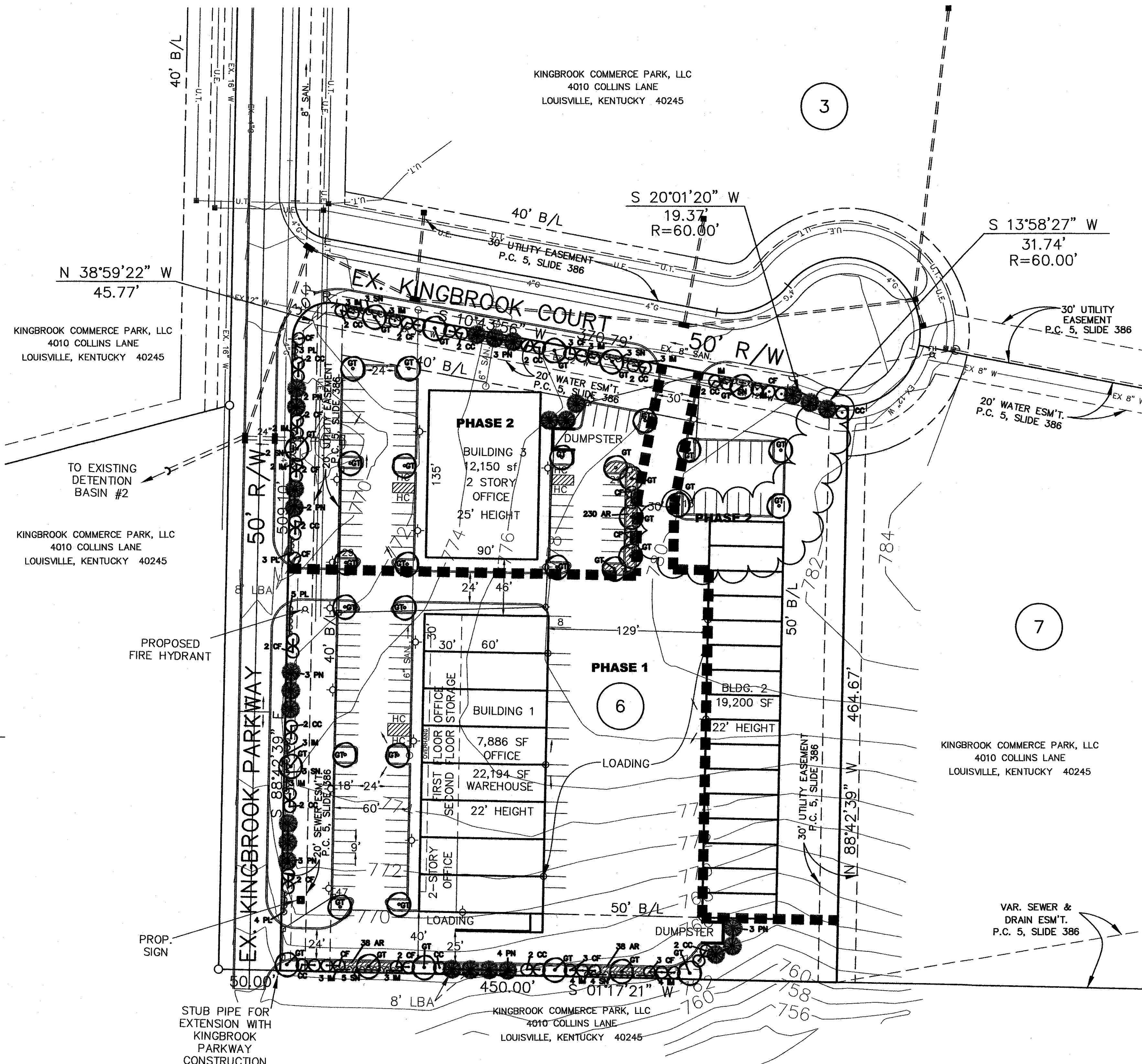
**LANDSCAPE REQUIREMENTS**

CANOPY TREES REQUIRED	63 TREES
CANOPY TREES PROVIDED	63 TREES
UNDERSTORY TREES REQUIRED	59 TREES
UNDERSTORY TREES PROVIDED	59 TREES
SHRUBS REQUIRED	79 SHRUBS
SHRUBS PROVIDED	79 SHRUBS
LANDSCAPE AREA REQUIRED	11,743 SF
LANDSCAPE AREA PROVIDED	11,743 SF
LANDSCAPE BUFFER LENGTH	1,111 LF

**UTILITY NOTE**

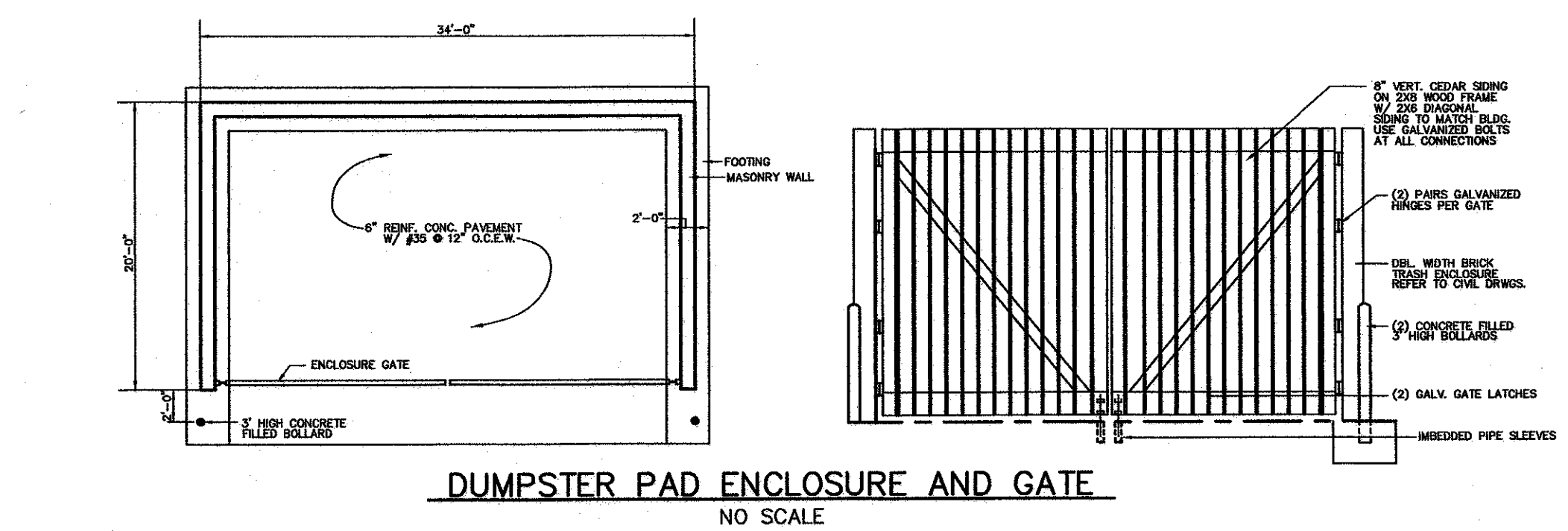
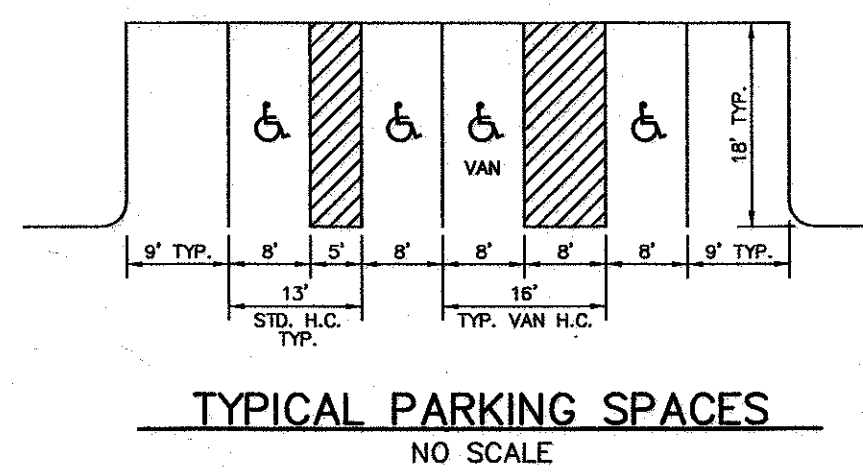
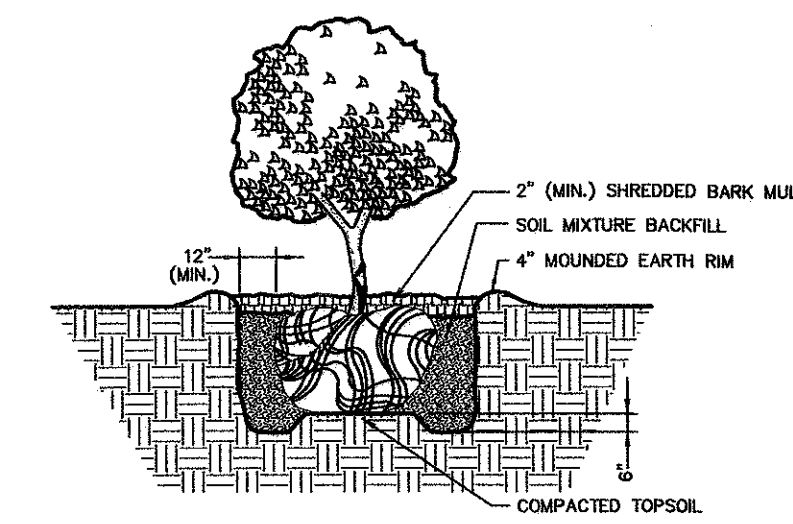
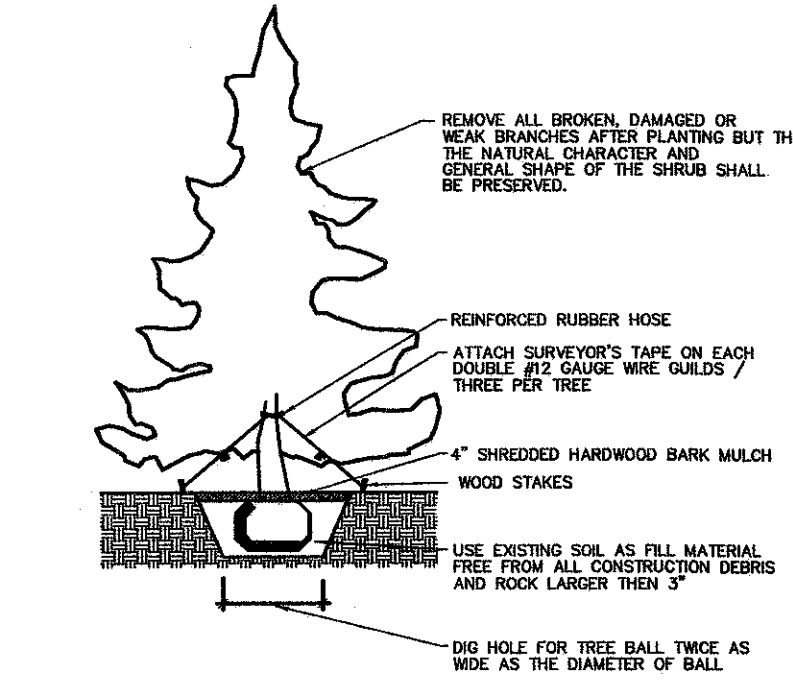
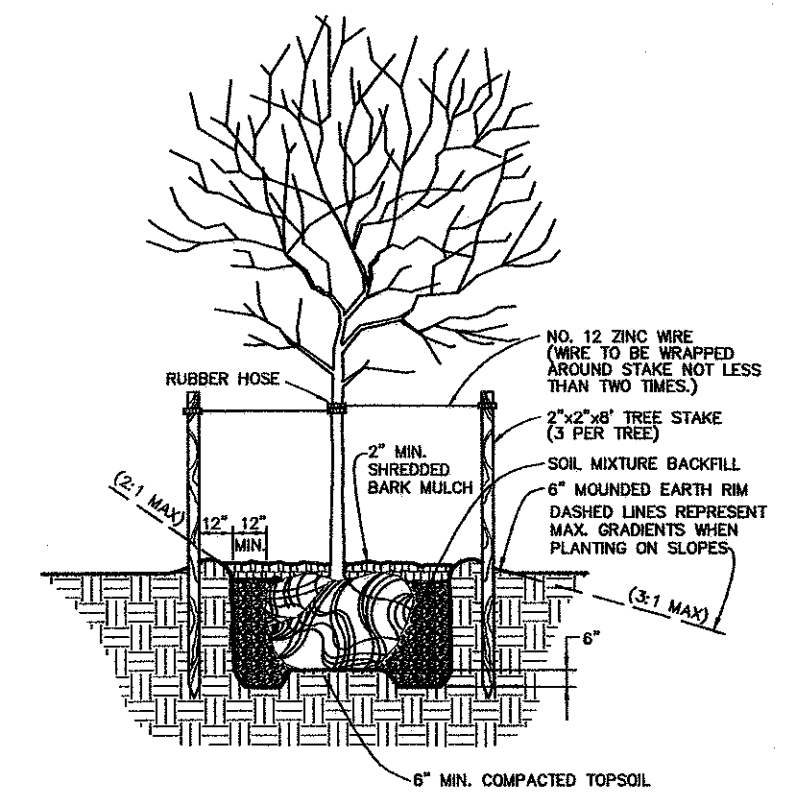
1) ALL UTILITIES ON THESE PLANS ARE APPROXIMATE. THE CONTRACTOR OR SUBCONTRACTOR SHALL NOTIFY THE UTILITY PROTECTION CENTER "B.U.D." (TOLL FREE PHONE NO. 1-800-382-5544) 48 HOURS IN ADVANCE OF ANY CONSTRUCTION ON THIS PROJECT. THIS NUMBER WAS ESTABLISHED TO PROVIDE ACCURATE LOCATIONS OF EXISTING BELOW GROUND UTILITIES (I.E. CABLES, ELECTRIC WIRES, GAS AND WATER LINES). THE CONTRACTOR SHALL BE RESPONSIBLE FOR BECOMING FAMILIAR WITH ALL UTILITY REQUIREMENTS SET FORTH ON THE PLANS AND IN THE TECHNICAL SPECIFICATIONS AND SPECIAL PROVISIONS.

2) THE CONTRACTOR IS RESPONSIBLE FOR DETERMINING THE EXACT LOCATION, NATURE, AND STATUS OF ALL EXISTING UTILITIES WITHIN THE CONSTRUCTION AREA WHETHER SHOWN ON THE PLANS OR NOT, AND SHALL EXTEND, ADJUST OR RECONSTRUCT TO THE SIZE AND LOCATION AS SHOWN ON THE ARCHITECTS PLANS.



**SITE DATA**

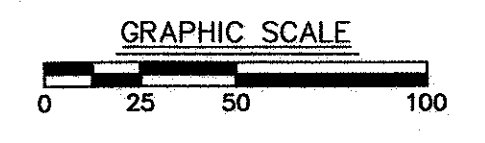
TOTAL AREA	5.23± ACRES
EXISTING ZONING	I-1
ADJACENT ZONING	I-1
PROPOSED BUILDING	
OFFICE	32,186 SF
WAREHOUSE	41,394 SF
REQUIRED PARKING	
OFFICE (1/300 SF)	107 SPACES
WAREHOUSE (.25/1000 SF)	10 SPACES
TOTAL	117 SPACES
PROPOSED PARKING	
GENERAL PARKING	114 SPACES
HANDICAP PARKING	6 SPACES
TOTAL	120 SPACES
BUILDING HEIGHT	60 FT MAX.
FLOOR SPACE TO LAND AREA RATIO	.32



**PLANT LIST**

KEY	QUANT.	BOTANICAL NAME	COMMON NAME	SIZE	NOTES
GT	37	GLEDITSIA TRIACANTHOS VAR. INERMIS	THORNLESS HONEYLOCUST	2" CAL.	AS SHOWN
PN	26	PINUS NIGRA	AUSTRIAN PINE	2" CAL.	15' O.C.
CF	33	CORNUS FLORIDA 'WHITE CLOUD'	WHITE FLOWERING DOGWOOD	2" CAL.	10' O.C.
CC	26	CERCIS CANADENSIS	RED BUD	2" CAL.	10' O.C.
PL	15	PRUNUS LAUROCEFRASUS 'OTTO LUYKEN'	COMMON LAURELCHERRY	3" HT.	5' O.C.
IM	42	ILEX X MERSERVAE 'BLUE MAID'	BLUE MAID HOLLY	3" HT.	5' O.C.
SN	22	SPIRAEA NIPPONICA 'SNOWMOUND'	SNOWMOUND SPIREA	3" HT.	5' O.C.
AR	306	AJUGA REPTANS	CARPET BUGLE	3" POTS*	2' O.C.

\* 18 PLANTS PER PLAT



**SABAK, WILSON & LINGO, INC.**  
ENGINEERS, LANDSCAPE ARCHITECTS & PLANNERS  
315 WEST MARKET STREET, LOUISVILLE, KENTUCKY 40202 (502) 584 - 6271

Scale: 1"=50'  
Date: 8/1/08

**APPROVED**  
BY: *Jim Boland*  
FOR: Kingbrook Commerce Park LLC  
DATE: 8/3/08

**PLANTING PLAN**  
**KINGBROOK COMMERCE PARK**  
LOT 6  
D.B. 337, P. 405  
OWNER & DEVELOPER  
**LANHAM INSULATION INC.**  
13127 MIDDLETOWN INDUSTRIAL BOULEVARD  
LOUISVILLE, KENTUCKY 40223