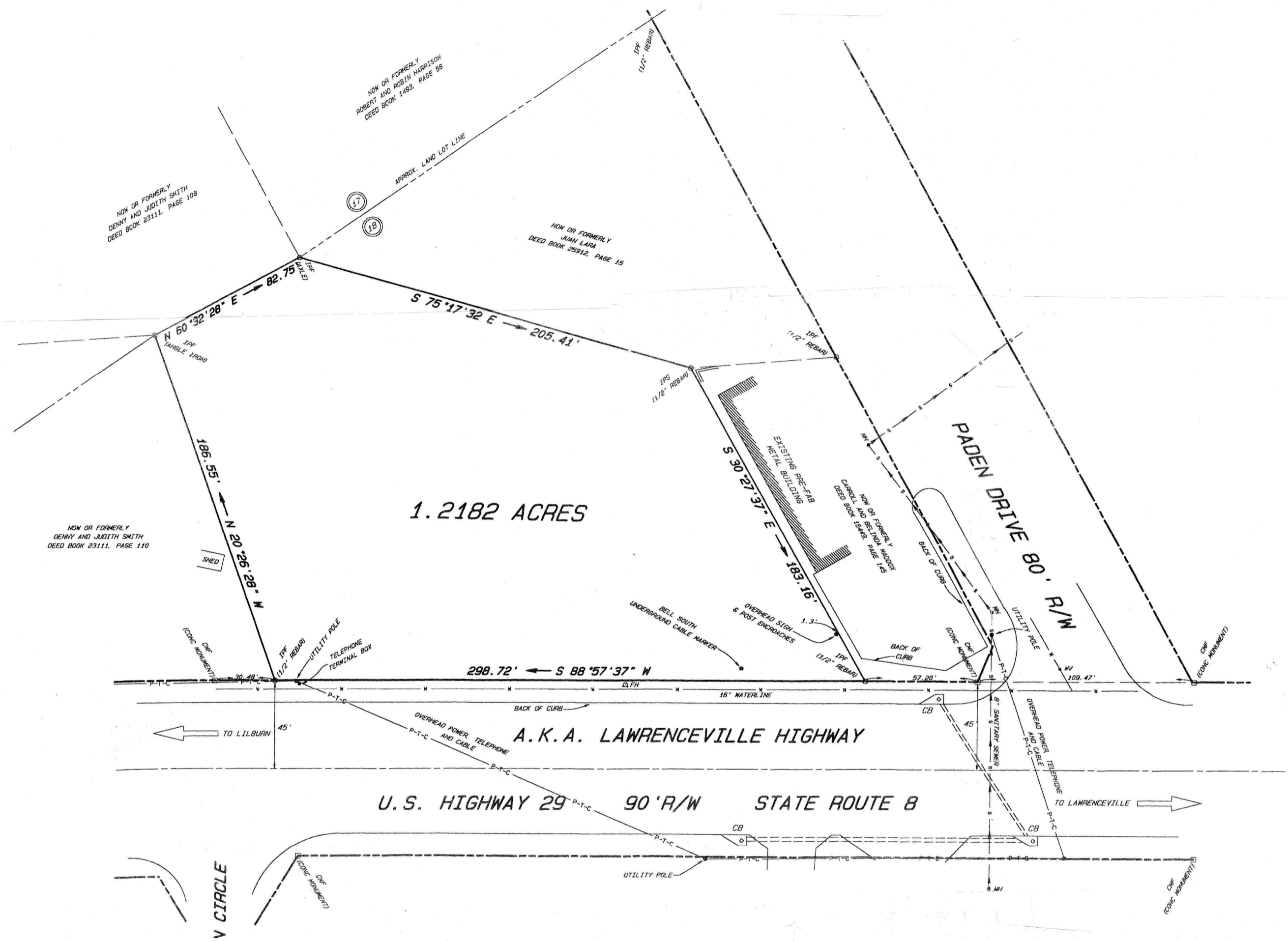
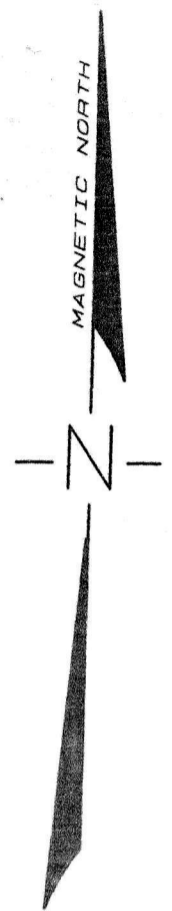


PROPERTY LINE
 DITUS
 SHOT FOUND
 SHOT OF WAY
 ST HOLE
 AVERSE LINE
 DER GROUND
 ILITY EASEMENT
 TER VALVE

PI = POINT OF INTERSECTION
 PRC = POINT OF REVERSE CURVE
 PT = POINT OF TANGENCY
 RCD = REINFORCED CONCRETE PIPE
 ---C--- = CABLE TV LINE & POLE
 ---G--- = GAS LINE
 ---P--- = POWER LINE & POLE
 ---S--- = SEWER LINE & MANHOLE
 ---T--- = TELEPHONE LINE & POLE
 ---W--- = WATER LINE & FIRE HYDRANT
 ---F--- = FENCE LINE



THE FIELD WORK FOR THIS SURVEY WAS RUN WITH A 6 SECOND THEODOLITE GTS-38 TOPCON TOTAL STATION.

THE FIELD DATA UPON WHICH THIS PLAT IS BASED HAS A CLOSURE PRECISION OF ONE FOOT IN 26,254 FEET AND AN ANGULAR ERROR OF 4.9 SECONDS PER ANGLE POINT AND WAS ADJUSTED USING THE COMPASS RULE.

THIS PLAT HAS BEEN CALCULATED FOR CLOSURE AND IS FOUND TO BE ACCURATE WITHIN ONE FOOT IN 100,000+ FEET.



BOUNDARY SURVEY FOR:
HENRY & GAIL HUGHES
 LAND LOT 18, 5th DISTRICT
 GWINNETT COUNTY, GEORGIA

PREPARED BY
LAND DEVELOPING COMPANY
 1162 ROCKBRIDGE ROAD
 STONE MOUNTAIN, GA 30087
 PHONE: (770) 923-6691
 SEPTEMBER 20, 2002

