

# 818 SOUTH DAKOTA STREET, SEATTLE, WA

## FOR LEASE



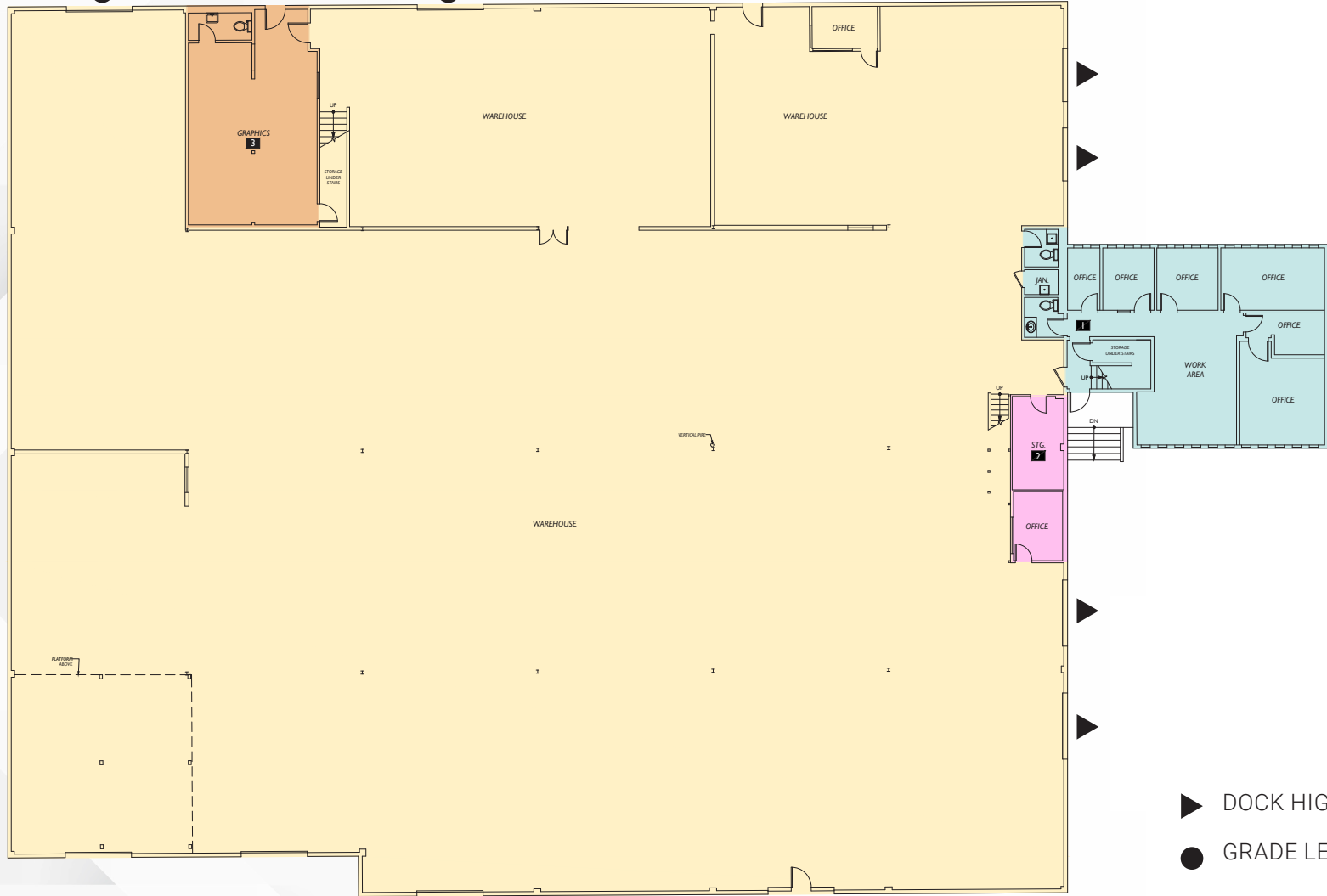
## 24,670 SF AND 4,421 SF OF OFFICE AVAILABLE NOW

 SMARTCAP  
NEWMARK

- 16' CLEAR HEIGHT
- HEAVY POWER: 600 AMPS 480/277 V
- 4 DOCK HIGH DOORS / 2 DRIVE-IN DOORS
- FREE-STANDING BUILDING
- SMALL SECURED / FENCED YARD
- EASY ACCESS TO AIRPORT WAY AND I-5
- CAPITAL IMPROVEMENTS UNDERWAY

9TH AVENUE SOUTH

ADJACENT WAREHOUSE



SOUTH DAKOTA STREET

FENCED STORAGE

- ▶ DOCK HIGH
- GRADE LEVEL





# 818 SOUTH DAKOTA STREET, SEATTLE, WA



WEST SEATTLE BRIDGE



DOWNTOWN SEATTLE

APPROX. 20 MINUTES TO THE EASTSIDE

APPROX. 40 MINUTES TO PORT OF TACOMA

APPROX. 15 MINUTES TO SEATAC AIRPORT

Port of Seattle

CENTURYLINK FIELD

T-MOBILE PARK

INTERSTATE 5

INTERSTATE 90

INTERSTATE 5

99





 SMARTCAP  
NEWMARK

TAYLOR HOFF, SIOR | 425.362.1388 | [taylor.hoff@ngkf.com](mailto:taylor.hoff@ngkf.com)  
THAD MALLORY, SIOR | 425.362.1410 | [thad.mallory@ngkf.com](mailto:thad.mallory@ngkf.com)

The distributor of this communication is performing acts for which a real estate license is required. The information contained herein has been obtained from sources deemed reliable but has not been verified and no guarantee, warranty or representation, either express or implied, is made with respect to such information. Terms of sale or lease and availability are subject to change or withdrawal without notice. 18-1023