

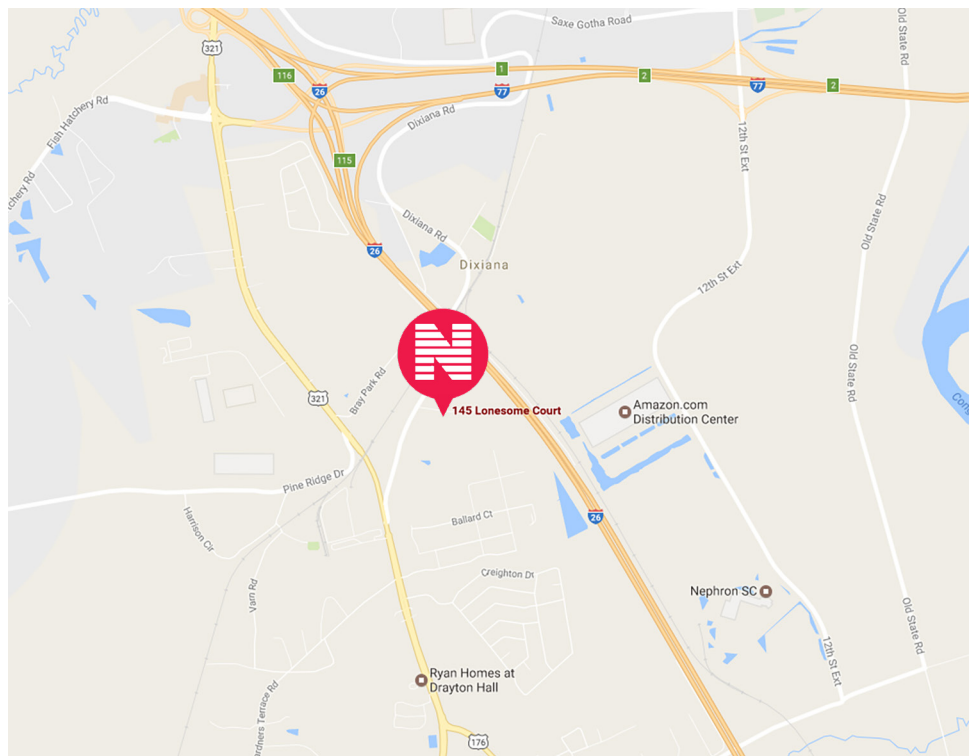
145 LONESOME COURT

West Columbia, South Carolina



FOR SALE

- ◆ 29.58 Acres Available For Sale
- ◆ ± 20 Buildable Acres
- ◆ Zoning: General Commercial
- ◆ Frontage on I-26
- ◆ Close proximity to I-77, 12th Street Extension, Amazon, and Nephron Pharmaceuticals
- ◆ Lexington TMS 006899-04-002 and 006899-04-001
- ◆ **SALES PRICE: \$700,000**
\$675,000
\$650,000



Newmark
Wilson Kibler

1111 Laurel Street, Columbia, SC 29201 T 803.779.8600 www.wilsonkibler.com

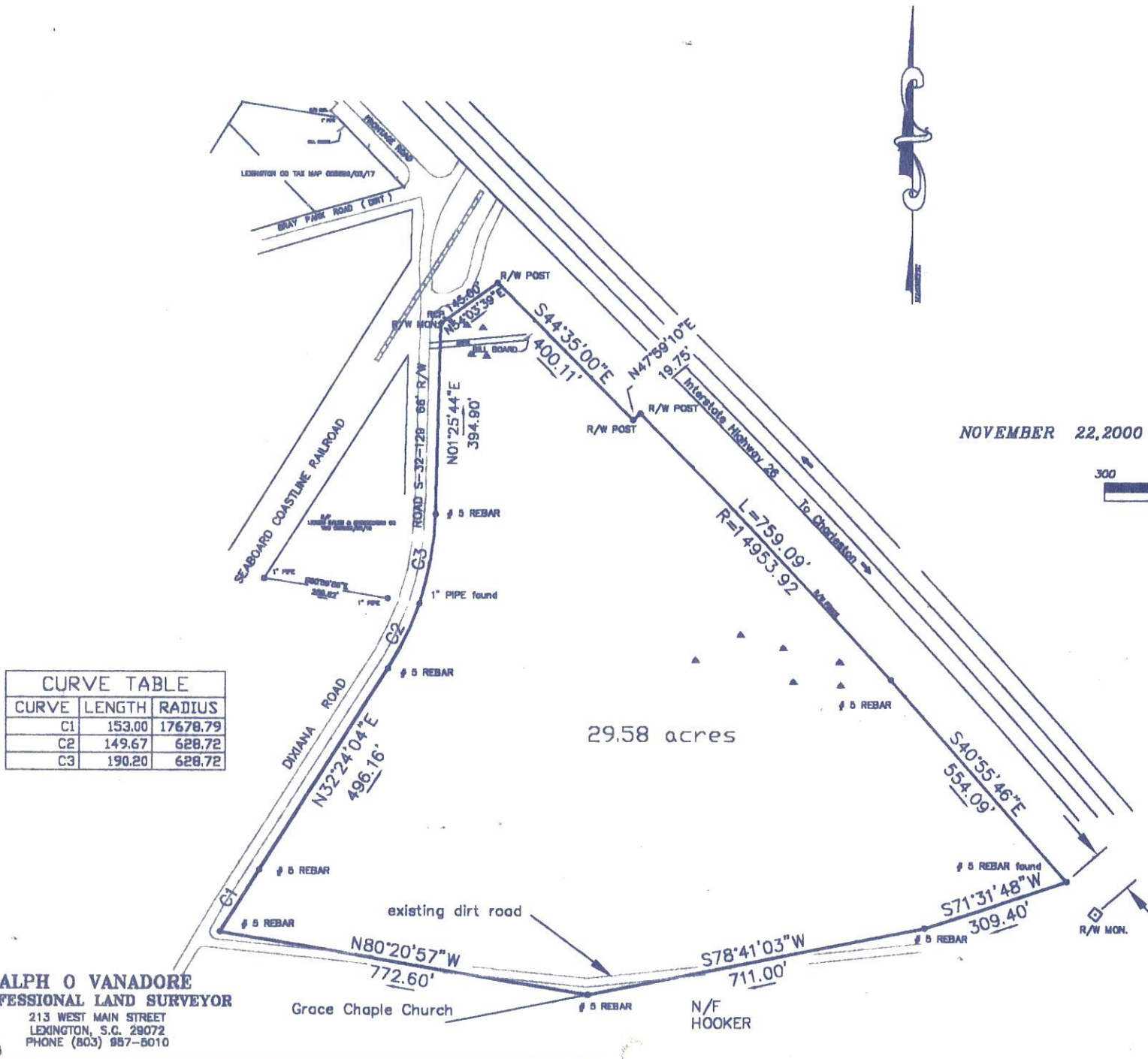
Julian Wilson, CCIM

803.255.8626 julian.wilson@wilsonkibler.com

The information contained herein has been obtained from sources we believe to be reliable; however, Newmark Grubb Wilson Kibler has not conducted any investigation regarding these matters and makes no warranty or representation whatsoever regarding the accuracy or completeness of the information provided. Independently owned and operated.

145 LONESOME COURT

West Columbia, South Carolina



NOVEMBER 22, 2000

300

29.58 acres

RALPH O VANADORE
 PROFESSIONAL LAND SURVEYOR
 213 WEST MAIN STREET
 LEXINGTON, S.C. 29072
 PHONE (803) 987-8010

2000/083

Newmark
Wilson Kibler

1111 Laurel Street, Columbia, SC 29201 T 803.779.8600 www.wilsonkibler.com

Julian Wilson, CCIM
 803.255.8626 julian.wilson@wilsonkibler.com

The information contained herein has been obtained from sources we believe to be reliable; however, Newmark Grubb Wilson Kibler has not conducted any investigation regarding these matters and makes no warranty or representation whatsoever regarding the accuracy or completeness of the information provided. Independently owned and operated.