

6.12+/- Acre Cranberry Bog Property for Sale

173 & 180 Herring Pond Road, Plymouth, MA



- 6.12+/- Acres
- Currently productive and non-productive bogs

Disclaimer:
Agricultural lands may be subject to the provisions of Massachusetts General Law 61a. All buyers should verify this.

Asking: \$119,000



Contact Kevin Pepe
Commercial Realty Advisors, Inc.
Real Estate, Investment, Brokerage Company

222 West Main Street
Hyannis, MA 02601
508-862-9000 ext. 105
kpepe@comrealty.net
www.comrealty.net



173 Herring Pond Rd: Shown as parcel 009-003 on the Town of Plymouth (MA) Assessors Map 057. The subject property consists of approximately 0.80 acres and is improved with seemingly producing Early Black vined bogs, some upland and deeded pump access with reportedly deeded pump house and access to Great Herring Pond
Real Estate Taxes (2015): \$19.96+/- .This property contains 0.8+/- acres of productive bogs.

180 Herring Pond Road: Shown as parcel 034-000U on the Town of Plymouth (MA) Assessors Map 057. The subject property consists of approximately 5.32 acres and is improved with seemingly producing Early Black vined bogs, some upland and reportedly deeded pump house and access to Great Herring Pond. Real Estate Taxes (2015): \$124.99+/- . This property contains 5.32+/- acres of non-productive bogs.

This information has been secured from sources we believe to be reliable, but we make no representation or warranties, expressed or implied, as to the accuracy of the information. Referenced square footage and acreage and sketched outlines of the property are approximate. Buyer must verify all the information and bears all the risk for any inaccuracies. Brokers represent the Sellers of this project unless otherwise disclosed

6.12+/- Acre Cranberry Bog Property for Sale 173 & 180 Herring Pond Road, Plymouth, MA



- 6.12+/- Acres
- Currently productive and non-productive bogs

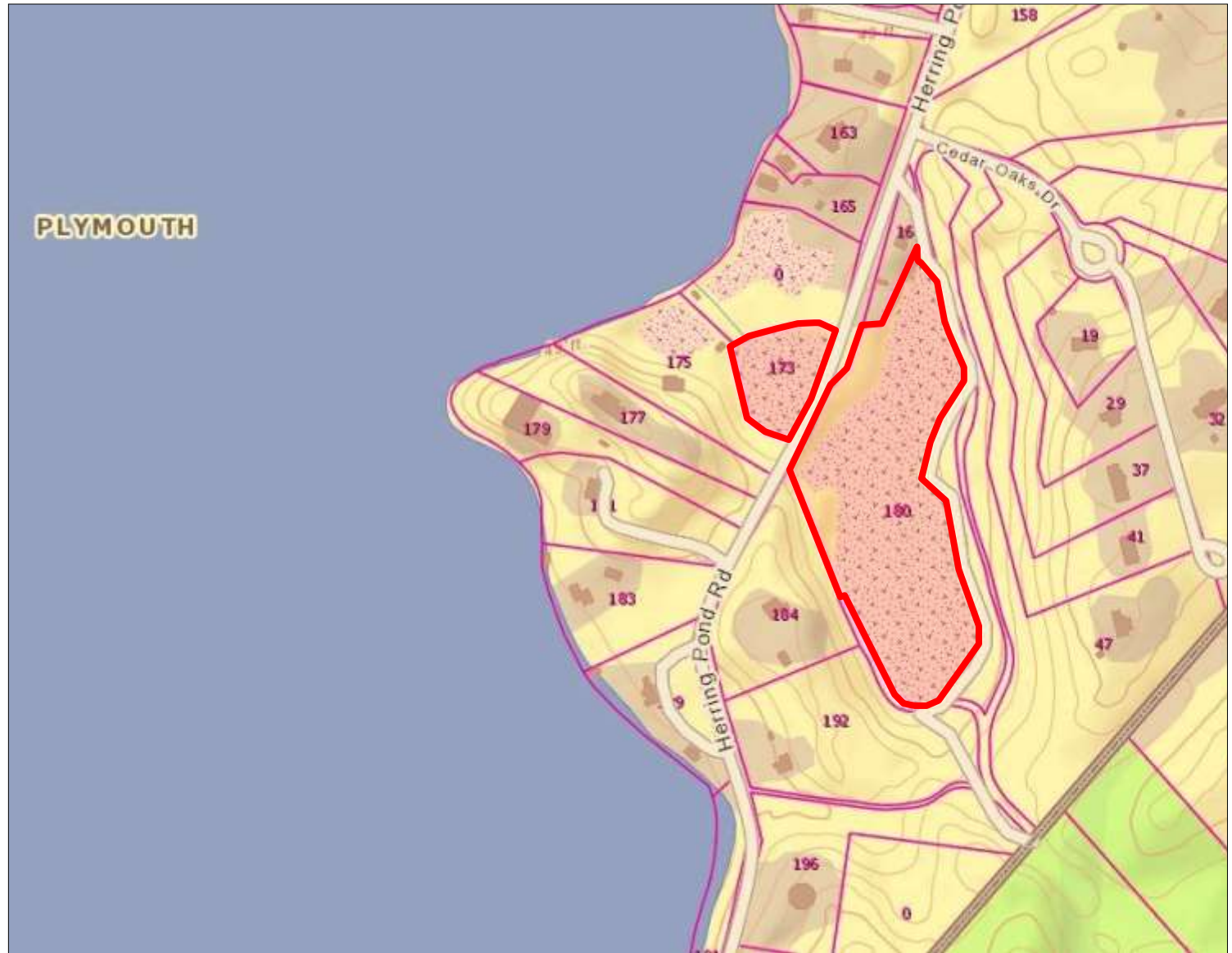
*Disclaimer:
Agricultural lands may be subject
to the provisions of Massachusetts
General Law 61a. All buyers
should verify this.*

Asking: \$119,000



Contact Kevin Pepe
Commercial Realty
Advisors, Inc.
*Real Estate, Investment,
Brokerage Company*

222 West Main Street
Hyannis, MA 02601
508-862-9000 ext. 105
kpepe@comrealty.net
www.comrealty.net



This information has been secured from sources we believe to be reliable, but we make no representation or warranties, expressed or implied, as to the accuracy of the information. Referenced square footage and acreage and sketched outlines of the property are approximate. Buyer must verify all the information and bears all the risk for any inaccuracies. Brokers represent the Sellers of this project unless otherwise disclosed