



# For Lease

## 1111 Neville Street

---

### Prepared by:

Carey Greene  
919.287.2135  
[cgreene@realestateassoc.com](mailto:cgreene@realestateassoc.com)



# Executive Summary



## PROPERTY OVERVIEW

Rare downtown industrial space! This  $\pm 47,200$  SF warehouse is located in a burgeoning creative, industrial center in Central Durham near downtown, including new headquarters for Counter Culture Coffee and restoration of John O'Daniel Exchange Building and the historic Gilbert Street Dye Mill.  $\pm 7,334$  SF remain on the south end of the building.

## PROPERTY HIGHLIGHTS

- Minimum divisible of  $\pm 3,600$  and maximum continuous of  $\pm 7,334$  SF
- Covered loading area with loading dock
- One drive-in door
- Ceiling heights of 18' at eaves to 30' at center
- Column spacing approximately 24' X 66'
- New roof and LED lighting installed
- Convenient to Downtown Durham, Business 70, Hwy 55 and Hwy 98

## OFFERING SUMMARY

Lease Rate:

Negotiable

### CAREY GREENE

O: 919.287.2135

C: 919.949.5672

cgreene@realestateassoc.com

3333 DURHAM-CHAPEL HILL BLVD, SUITE C

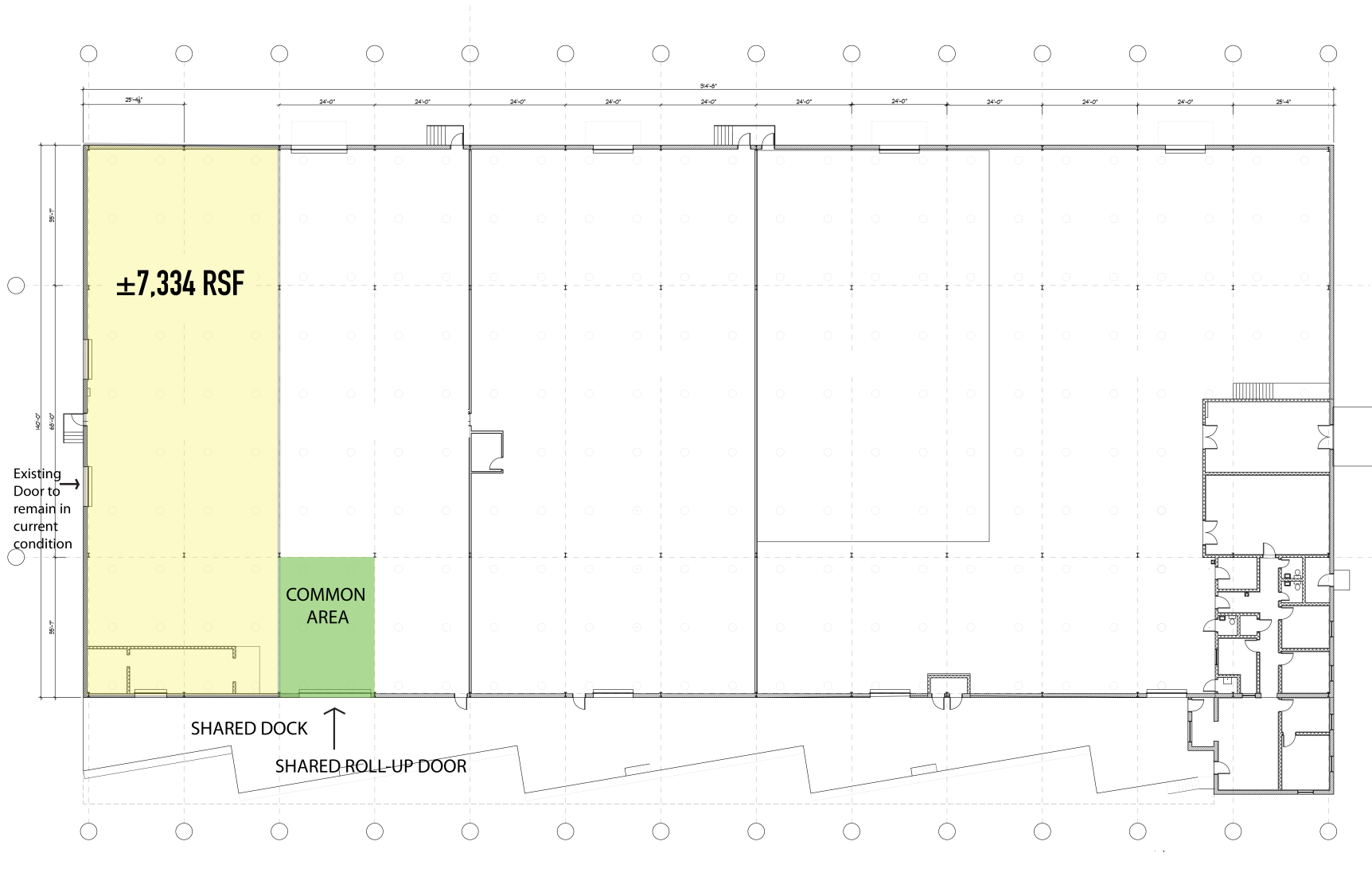
DURHAM, NC 27707

REALESTATEASSOC.COM | 919.489.2000





# Floor Plan



**CAREY GREENE**

O: 919.287.2135

C: 919.949.5672

cgreene@realestateassoc.com

3333 DURHAM-CHAPEL HILL BLVD, SUITE C

DURHAM, NC 27707

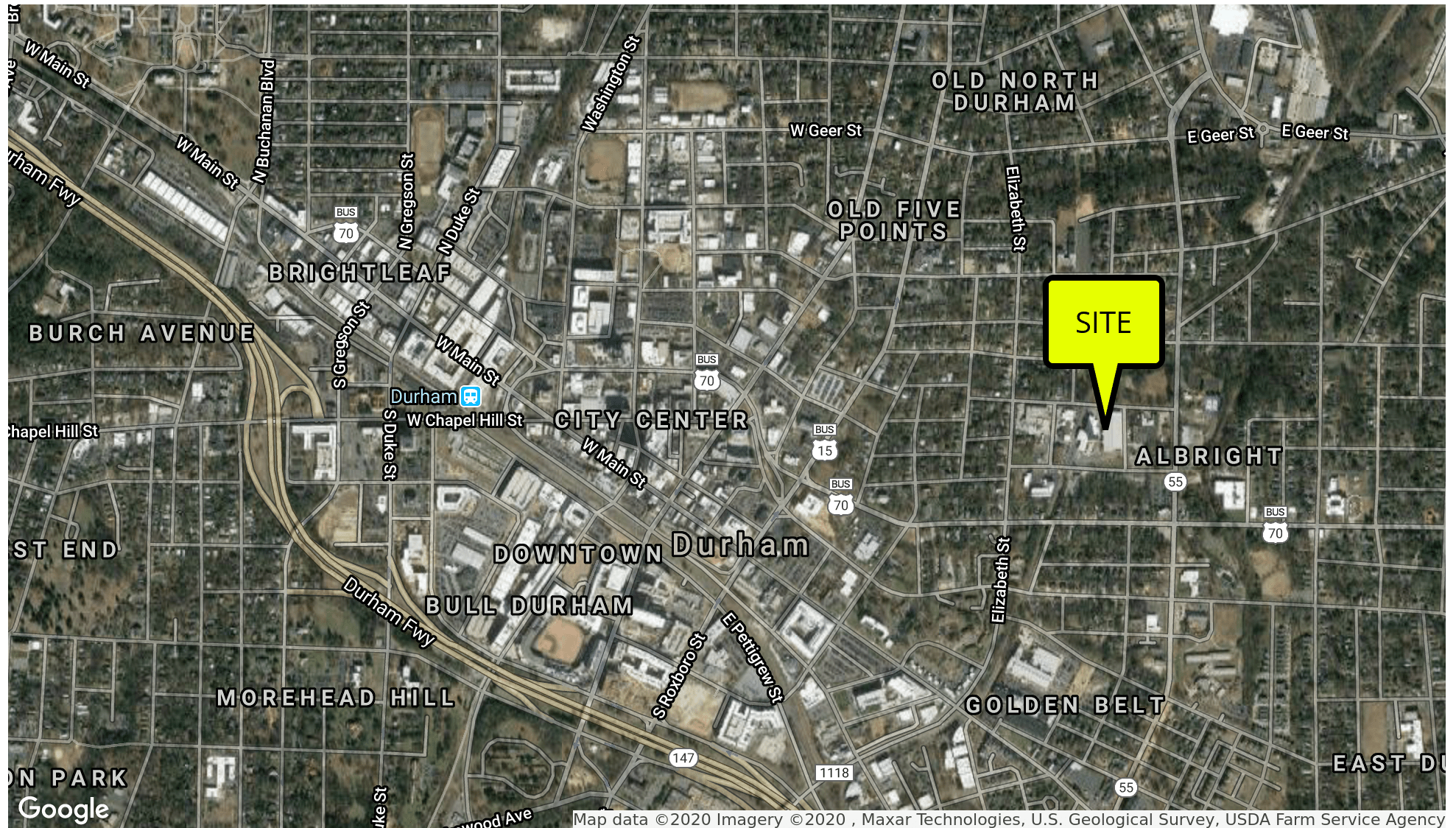
REALESTATEASSOC.COM | 919.489.2000



No warranty or representation, expressed or implied, is made to the accuracy of the information contained herein, and same is submitted subject to errors, omissions, change of price, rental, or other conditions, withdrawal without notice, and to any special listing conditions imposed by principals.



# Retailer Map



CAREY GREENE

O: 919.287.2135

C: 919.949.5672

cgreene@realestateassoc.com

3333 DURHAM-CHAPEL HILL BLVD, SUITE C

DURHAM, NC 27707

REALESTATEASSOC.COM | 919.489.2000



No warranty or representation, expressed or implied, is made to the accuracy of the information contained herein, and same is submitted subject to errors, omissions, change of price, rental, or other conditions, withdrawal without notice, and to any special listing conditions imposed by principals.



# Virtual Tour



## VIRTUAL TOUR

Copy and paste the following link into your web browser to view the virtual tour video:  
<https://youtu.be/0BeHadmUNco>



**CAREY GREENE**

Senior Vice President, Director of Brokerage

919.949.5672

[cgreene@realestateassoc.com](mailto:cgreene@realestateassoc.com)

## CAREY GREENE

O: 919.287.2135

C: 919.949.5672

[cgreene@realestateassoc.com](mailto:cgreene@realestateassoc.com)

3333 DURHAM-CHAPEL HILL BLVD, SUITE C

DURHAM, NC 27707

[REALESTATEASSOC.COM](http://REALESTATEASSOC.COM) | 919.489.2000

