



2555 NATOMAS

PARK DRIVE

SACRAMENTO

A Smart Move

AVISON
YOUNG

NOW LEASING

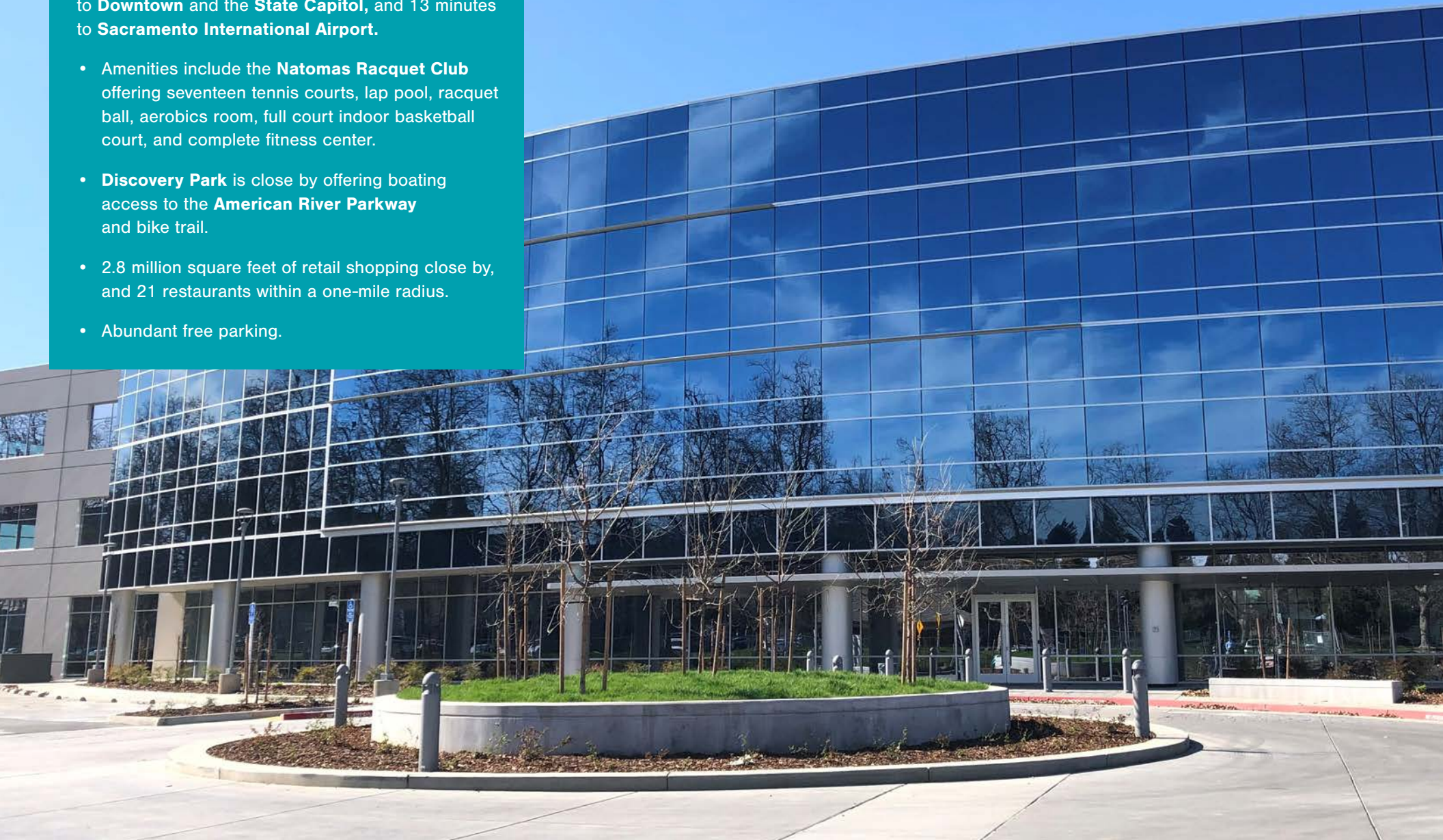
2555 NATOMAS

PARK DRIVE

2555 Natomas Park Drive offers the best locational attributes in the region for office tenants with immediate access to **Interstate 5 and 80**, five minutes to **Downtown** and the **State Capitol**, and 13 minutes to **Sacramento International Airport**.

- Amenities include the **Natomas Racquet Club** offering seventeen tennis courts, lap pool, racquet ball, aerobics room, full court indoor basketball court, and complete fitness center.
- **Discovery Park** is close by offering boating access to the **American River Parkway** and bike trail.
- 2.8 million square feet of retail shopping close by, and 21 restaurants within a one-mile radius.
- Abundant free parking.

A Smart Move




2555 NATOMAS
PARK DRIVE

A Smart Move

- Total square footage: Three floors, 86,500 rentable square feet.
- Per floor, 29,000 rentable square feet.
- 350 parking stalls.
- LEED Certified.

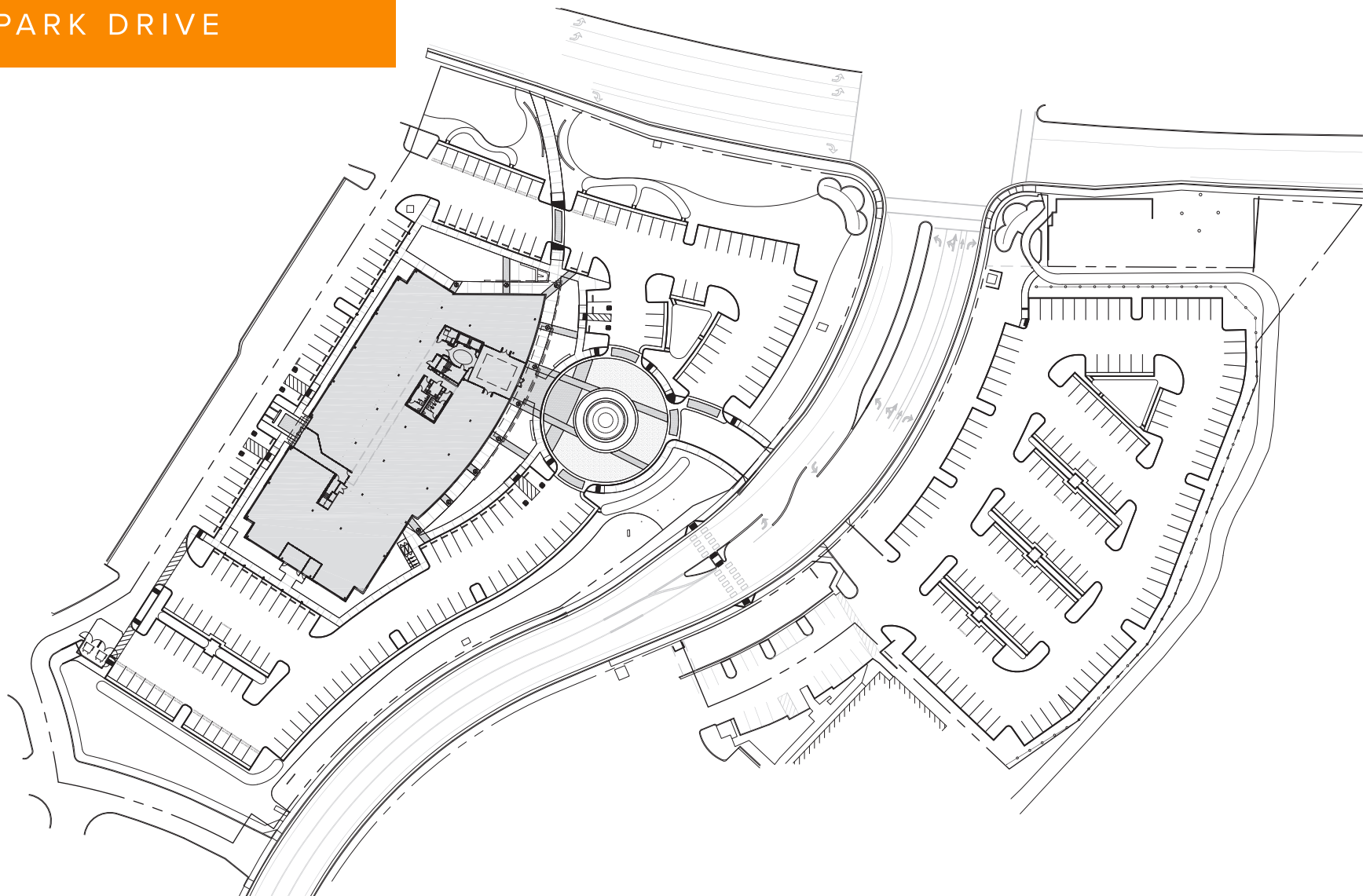
Thomas Aguer, CCIM, SIOR
tom.aguer@avisonyoung.com
D 916.563.7827
C 916.599.0546
Lic #00481113

Matt Havelock, CCIM, SIOR
matt.havelock@avisonyoung.com
D 916.563.7667
C 916.267.5513
Lic# 009930194

Max Kelly
max.kelly@avisonyoung.com
D 916.563.3906
C 916.304.4447
Lic# 02097072

**AVISON
YOUNG**

2555 NATOMAS
PARK DRIVE

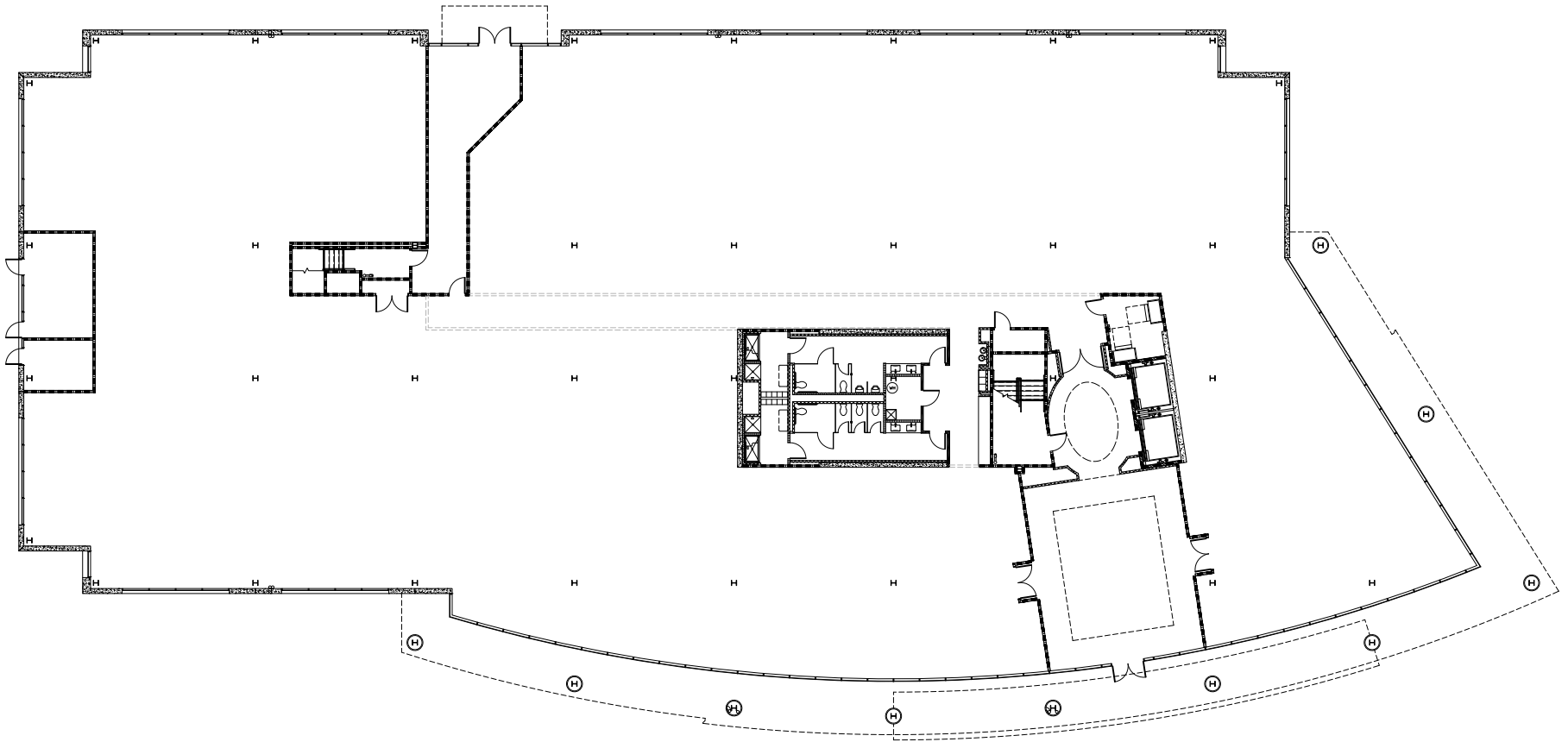


Thomas Aguer, CCIM, SIOR
tom.aguer@avisonyoung.com
D 916.563.7827
C 916.599.0546
Lic #00481113

Matt Havelock, CCIM, SIOR
matt.havelock@avisonyoung.com
D 916.563.7667
C 916.267.5513
Lic# 009930194

Max Kelly
max.kelly@avisonyoung.com
D 916.563.3906
C 916.304.4447
Lic# 02097072

2555 NATOMAS
PARK DRIVE

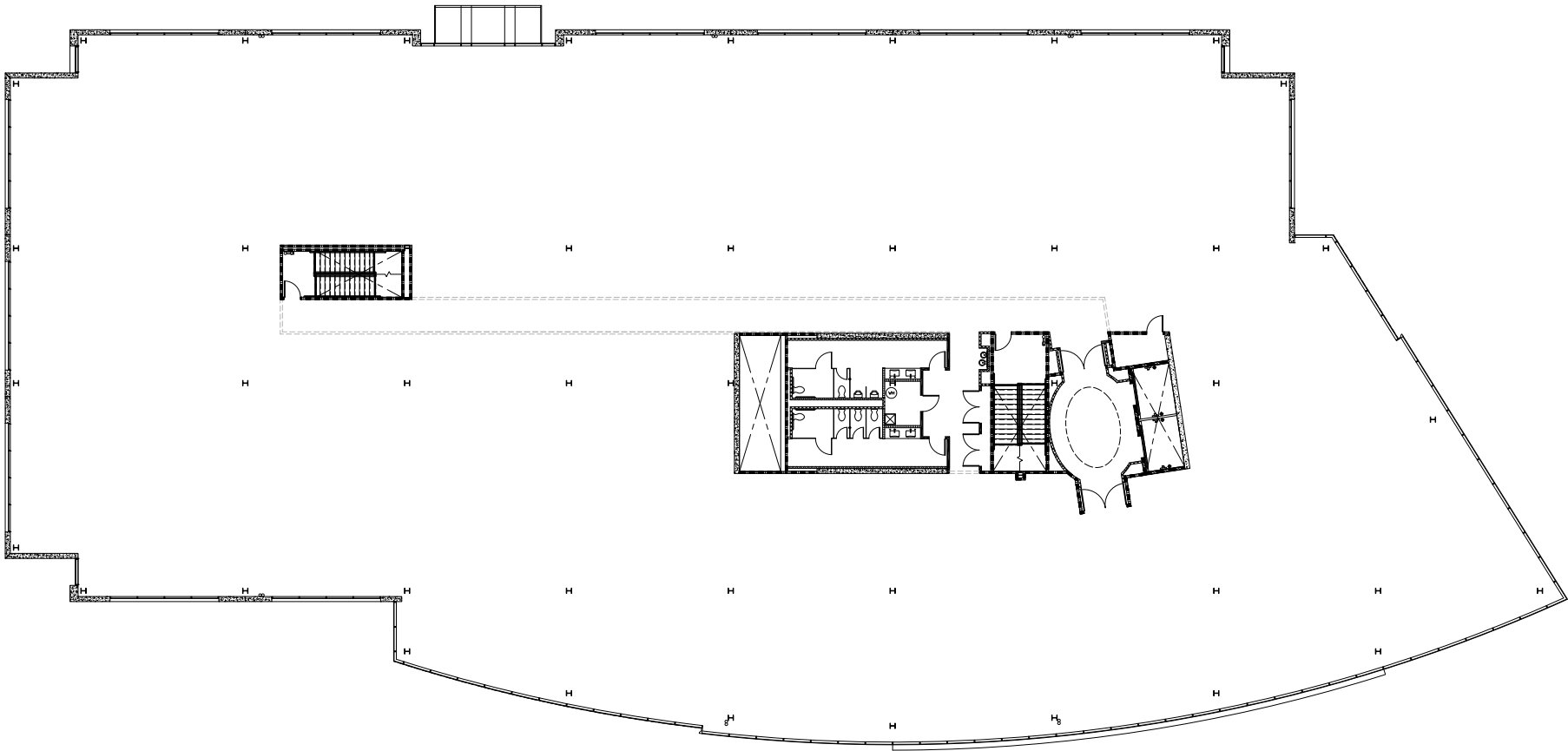


Thomas Aguer, CCIM, SIOR
tom.aguer@avisonyoung.com
D 916.563.7827
C 916.599.0546
Lic #00481113

Matt Havelock, CCIM, SIOR
matt.havelock@avisonyoung.com
D 916.563.7667
C 916.267.5513
Lic# 009930194

Max Kelly
max.kelly@avisonyoung.com
D 916.563.3906
C 916.304.4447
Lic# 02097072

2555 NATOMAS
PARK DRIVE



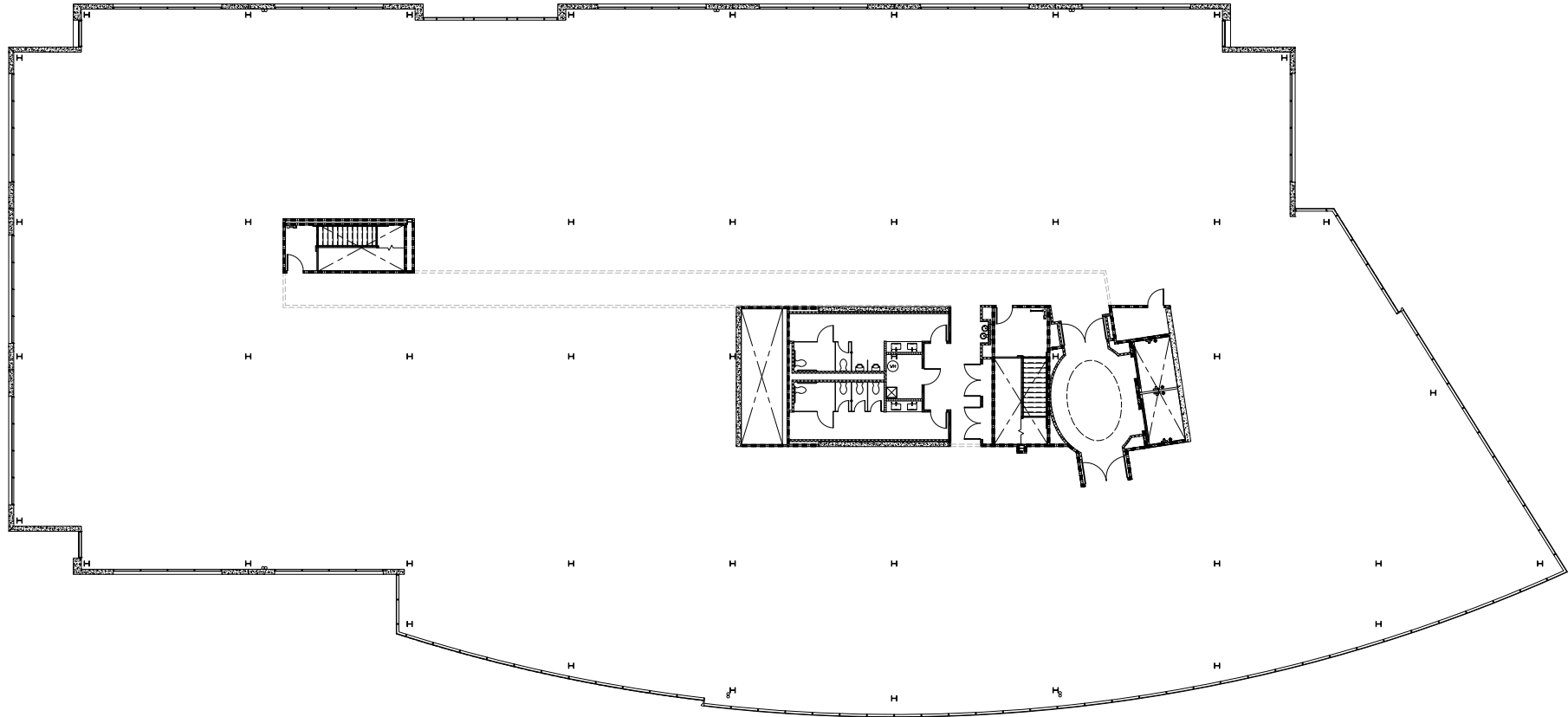
Thomas Aguer, CCIM, SIOR
tom.aguer@avisonyoung.com
D 916.563.7827
C 916.599.0546
Lic #00481113

Matt Havelock, CCIM, SIOR
matt.havelock@avisonyoung.com
D 916.563.7667
C 916.267.5513
Lic# 009930194

Max Kelly
max.kelly@avisonyoung.com
D 916.563.3906
C 916.304.4447
Lic# 02097072



2555 NATOMAS
PARK DRIVE

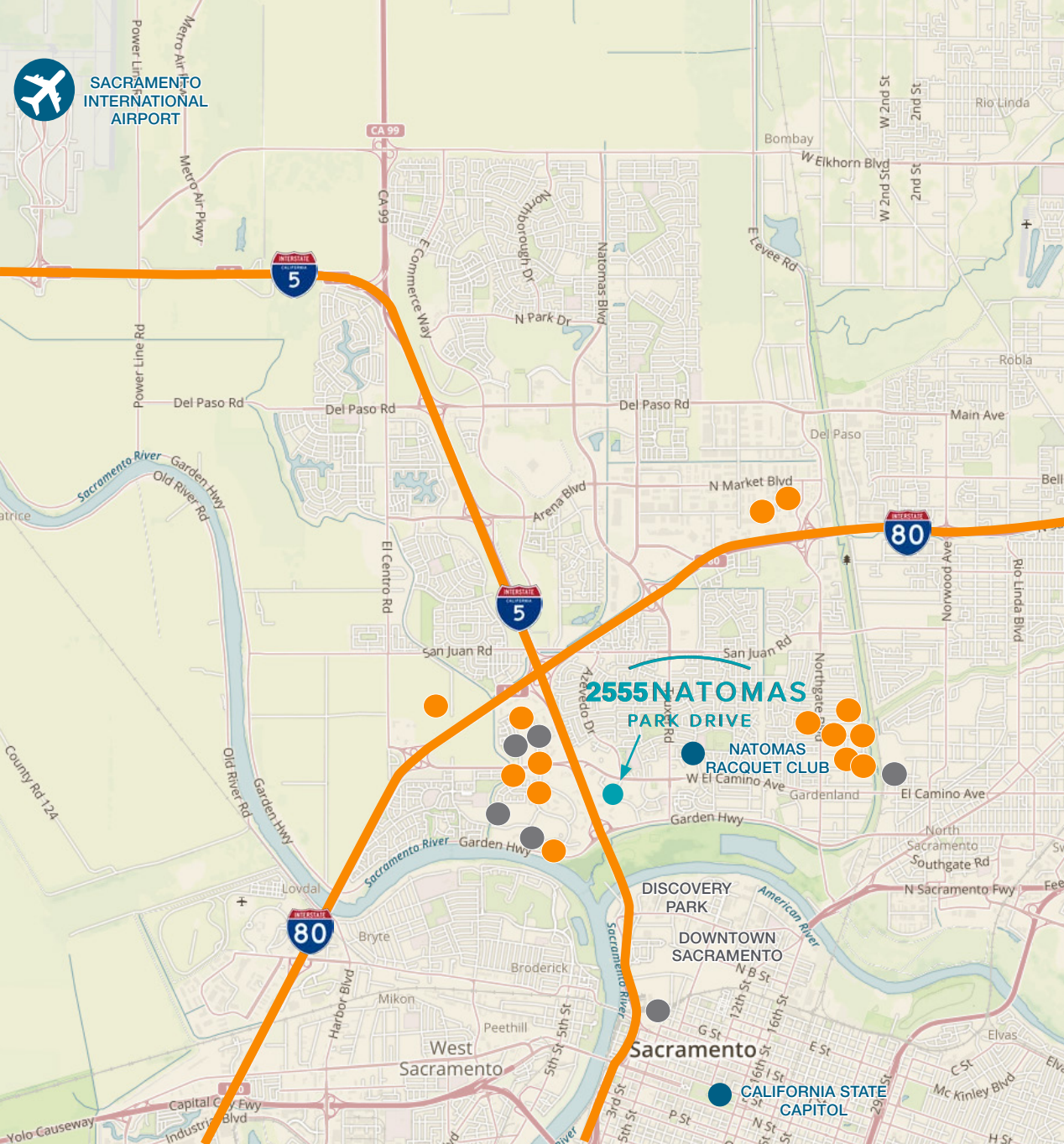


Thomas Aguer, CCIM, SIOR
tom.aguer@avisonyoung.com
D 916.563.7827
C 916.599.0546
Lic #00481113

Matt Havelock, CCIM, SIOR
matt.havelock@avisonyoung.com
D 916.563.7667
C 916.267.5513
Lic# 009930194

Max Kelly
max.kelly@avisonyoung.com
D 916.563.3906
C 916.304.4447
Lic# 02097072





SUPERIOR LOCATION



Multiple restaurants within one mile radius



15 Minutes to Downtown Sacramento



Multiple hotels within one mile radius



13 Minutes to Sacramento International Airport via I-5



The TMA works cooperatively with the South Natomas tenants on transportation management.



SUPERIOR LOCATION

- Excellent freeway access to I-5 and I-80.
- Five minutes drive to Downtown Sacramento, City Center, and 13 minutes to Sacramento International Airport.
- American River Parkway and bike trail are minutes away
- Easy access to regional transit shelter and direct link to light rail.
- Ample hospitality, Marriott SpringHill Suites and Hilton Garden Inn within one-mile radius.

Thomas Aguer, CCIM, SIOR
 tom.aguer@avisonyoung.com
 D 916.563.7827
 C 916.599.0546
 Lic #00481113

Matt Havelock, CCIM, SIOR
 matt.havelock@avisonyoung.com
 D 916.563.7667
 C 916.267.5513
 Lic# 009930194

Max Kelly
 max.kelly@avisonyoung.com
 D 916.563.3906
 C 916.304.4447
 Lic# 02097072

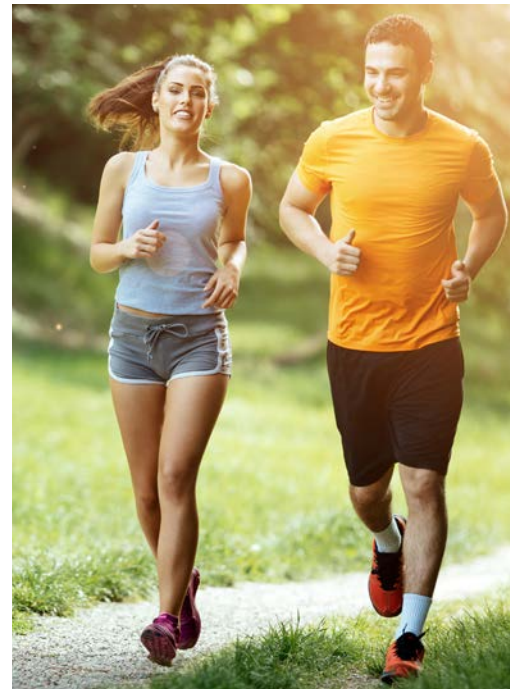


NATOMAS RACQUET CLUB



2555 NATOMAS
PARK DRIVE

A Smart Move



Thomas Aguer, CCIM, SIOR
tom.aguer@avisonyoung.com
D 916.563.7827
C 916.599.0546
Lic #00481113

Matt Havelock, CCIM, SIOR
matt.havelock@avisonyoung.com
D 916.563.7667
C 916.267.5513
Lic# 009930194

Max Kelly
max.kelly@avisonyoung.com
D 916.563.3906
C 916.304.4447
Lic# 02097072

**AVISON
YOUNG**


2555 NATOMAS
PARK DRIVE
SACRAMENTO

Thomas Aguer, CCIM, SIOR
tom.aguer@avisonyoung.com
D 916.563.7827
C 916.599.0546
Lic #00481113

Matt Havelock, CCIM, SIOR
matt.havelock@avisonyoung.com
D 916.563.7667
C 916.267.5513
Lic# 009930194

Max Kelly
max.kelly@avisonyoung.com
D 916.563.3906
C 916.304.4447
Lic# 02097072

**AVISON
YOUNG**