



**AT A GLANCE:**

**1498 SE Tech Center Place  
Suite 320  
Vancouver, WA 98683**

Submarket: Vancouver  
Property Type: Office  
Available SqFt: 1,285  
Building SqFt: 71,217  
Monthly Rent: \$2.33 / sq. ft.  
Annual Rent: \$28.00 / sq. ft.  
Lease Type: Full Service  
Date Available: 12/1/2020

**Contact:**

Jake Bigby, JakeB@PacTrust.com  
Phone: (360) 737-6300

## CLASS A OFFICE SPACE

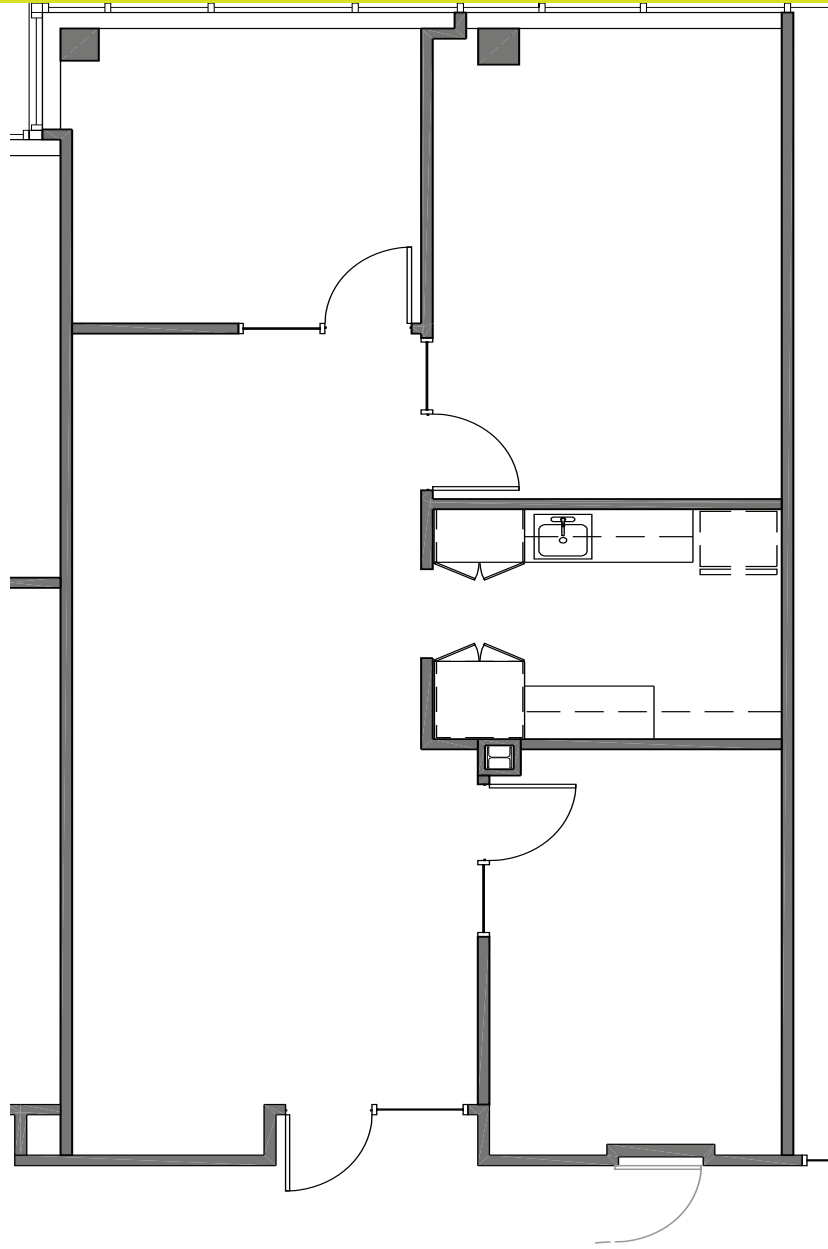
Building 607 - 1,285 sq. ft. Third Floor space available

**HIGHLIGHTS:**

- 1,285 sq. ft. of Class A office space.
- Full service.
- Annual lease rate - \$28.00/square foot.
- 4 /1,000 sq. ft. parking ratio.

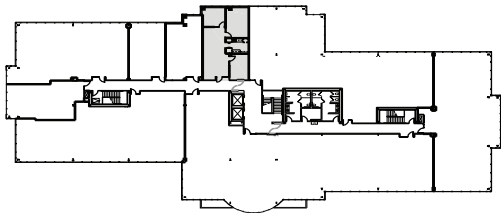
# OFFICE SPACE

BUILDING 607 | 1498 SE TECH CENTER PLACE, SUITE 320 | VANCOUVER, WA



SUBJECT

AVAILABLE  
1,285 SF RENTABLE



**FLOOR PLATE**  
NOT TO SCALE



Columbia Tech Center • 360.737.6300 or 503.624.6300 • [www.ColumbiaTechCenter.com](http://www.ColumbiaTechCenter.com)





## About Columbia Tech Center

Columbia Tech Center (CTC) is a master-planned mixed-use development located in Vancouver, Washington within the highly desirable Clark County technology corridor. Situated on 410 acres, CTC has over 3.4 million square feet of high quality office, flex/ industrial, medical and retail space already constructed with significant additional development and leasing opportunities available. CTC is beautifully landscaped with a 12-acre park, amphitheater and water features plus pedestrian and bike pathways and a basketball court. CTC is located close to Washington SR-14 and Interstate-205. Drive time to Portland International Airport is approximately 12 minutes and drive time to downtown Portland is approximately 25 minutes.