

FOR LEASE

745A

CLEMENTINA STREET

LIVE/WORK SPACE

- Perfect for video production, graphic design studio(s), photographers, creative users, and start-ups
- Flexible floor plan ideal for social distancing
- High-end residential fixtures
- High ceilings
- Built in 2001
- CAT5 and fiber networking



745A

CLEMENTINA S T R E E T

FEATURES

- **Ground Floor:**
±1,132 sq.ft. of Warehouse/Studio, Storage plus 1 Car Parking
±1,368 sq.ft. of Open Plan Design Office/Kitchen
- **1st Floor:** ±232 sq.ft. Rear Deck and Front Deck
- **Mezzanine:** ±681 sq.ft. Office
- **Total Square Foot:** ±3,181
- **Lease Rate:** \$8,000 per Month MG
- **Date Available:** July 1, 2020

For More Information Contact:

SCOTT VIX CCIM
Senior Vice President
Dir 415.268.2218
Cell 415.309.4015
svix@tricommercial.com
DRE # 01407761

TOM MARTINDALE SIOR
President
Dir 415.268.2285
Cell 415.601.5066
tmartindale@tricommercial.com
DRE # 00985891



745A CLEMENTINA STREET

TRI Commercial Real Estate Services ■ 71 Stevenson Street, Ste 1450, San Francisco, CA 94105





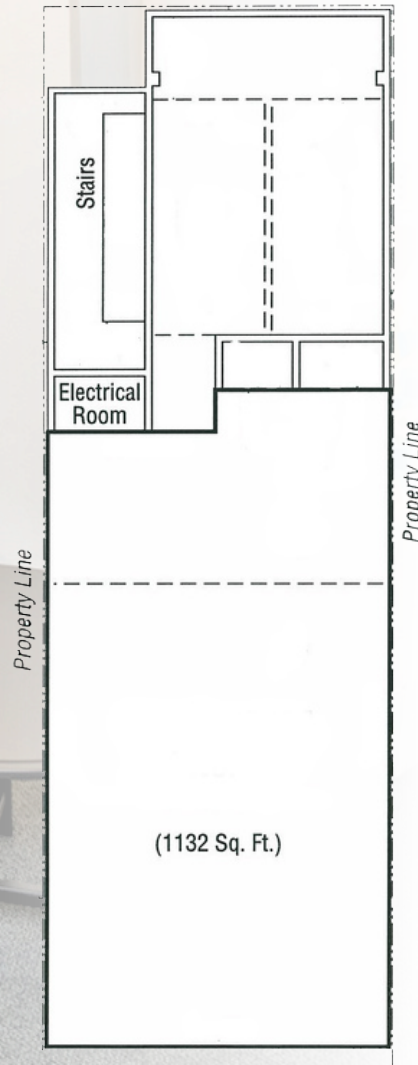
745A CLEMENTINA STREET

TRI Commercial Real Estate Services ■ 71 Stevenson Street, Ste 1450, San Francisco, CA 94105

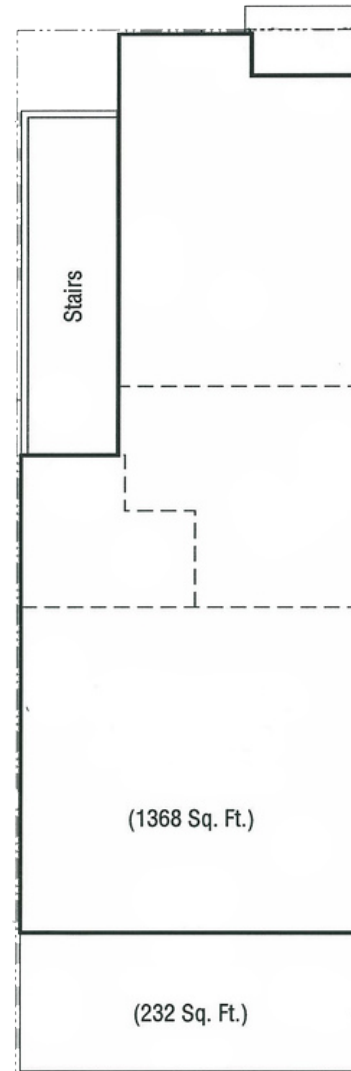


FLOOR PLANS

Garage Level
Clementina Street



1st Floor
Clementina Street



Mezzanine
Clementina Street

