



33-01 38th Avenue, Long Island City, NY



Property Features

- ❖ Immediate Availability
- ❖ Flexible Lease terms (12 mos up to 3 yrs)
- ❖ Small suites
- ❖ On-site superintendent
- ❖ Parking available (monthly fee)
- ❖ 9 foot ceilings
- ❖ Large passenger elevator

Building Amenities

- ❖ Small kitchen and business area
- ❖ Game room, fitness center, rooftop terrace, lounge, bike room

Location

Near 59th Street Bridge, Midtown Tunnel, Northern Boulevard & LIE

Transportation

- M R** at Northern Boulevard
- N W** at 31st Street & 39th Avenue
- E** at Northern Boulevard & 41st Avenue

Lower Level Loft Studios or Small Offices with Natural Light

IMMEDIATE AVAILABILITIES

- Studio 2 - 769 Sq. Ft. \$1,599.00 per month
- Studio 3 - 715 Sq. Ft. \$1,489.00 per month
- Studio 4 - 726 Sq. Ft. \$1,499.00 per month
- Studio 5 - 744 Sq. Ft. \$1,550.00 per month
- Studio 6 - 790 Sq. Ft. \$1,645.00 per month

*For Further Information and Inspection, Please Contact Exclusive Agent:
Melissa Grasso • Salesperson • (718) 371-0127 • mgrasso@s-z.com*



Kaufman Astoria Studios 35-11 35th Avenue, Long Island City, NY 11106 • (718) 392-5959 • Fax (718) 937-6546

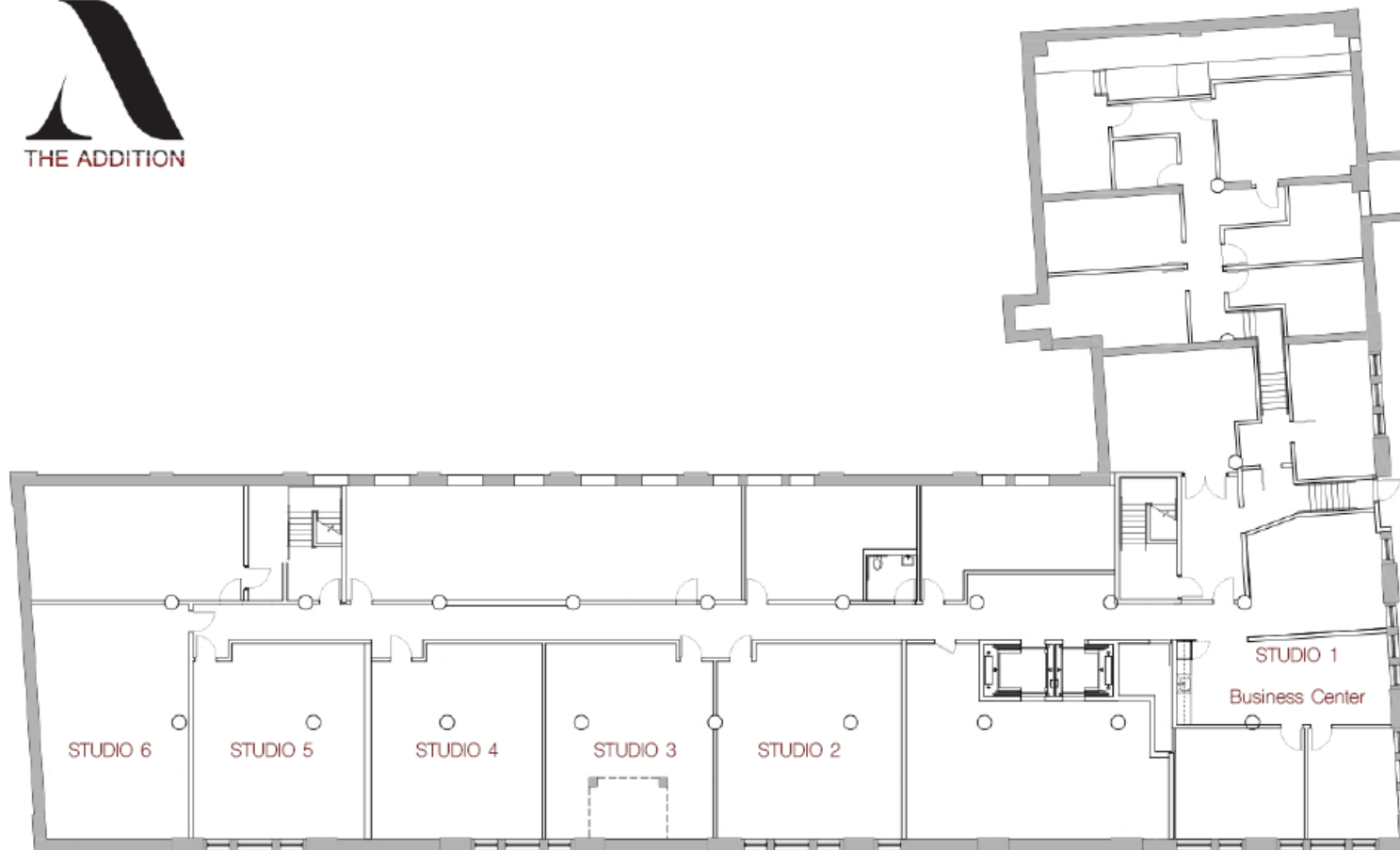
www.s-z.com



33-01 38th Avenue, Long Island City, NY



**Sholom &
Zuckerbrot Realty LLC**
Established 1962



The Addition – Creative Studios

For Further Information and Inspection, Please Contact Exclusive Agent:

Melissa Grasso • Salesperson • (718) 371-0127 • mgrasso@s-z.com

Kaufman Astoria Studios 35-11 35th Avenue, Long Island City, NY 11106 • (718) 392-5959 • Fax (718) 937-6546

www.s-z.com



33-01 38th Avenue, Long Island City, NY

Sholom & Zuckerbrot Realty LLC
Established 1962



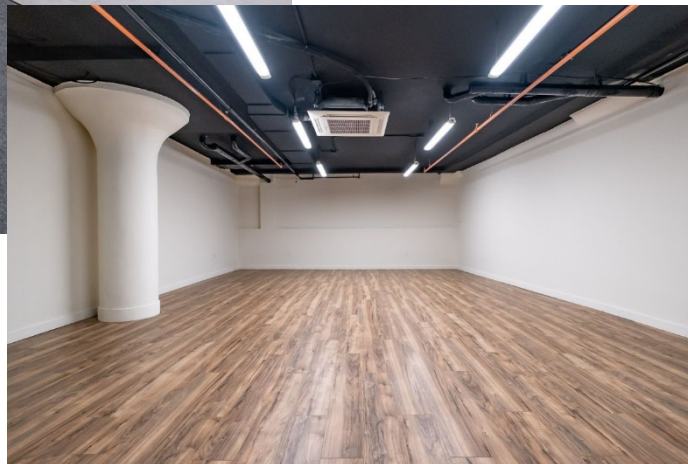
Lobby



Common Area

Studio

Studio



***For Further Information and Inspection, Please Contact Exclusive Agent:
Melissa Grasso • Salesperson • (718) 371-0127 • mgrasso@s-z.com***

**Kaufman Astoria Studios 35-11 35th Avenue, Long Island City, NY 11106 • (718) 392-5959 • Fax (718) 937-6546
www.s-z.com**