



FOR LEASE | OFFICE

PROFESSIONAL OFFICE SPACE FOR LEASE

201 E. Main Street, Salisbury, MD 21801



LEASE OVERVIEW

AVAILABLE SF:	6,189 SF
LEASE RATE:	\$12.00 SF/Yr (NNN)
LOT SIZE:	0.43 Acres
BUILDING SIZE:	13,858 SF
BUILDING CLASS:	A
YEAR BUILT:	1968
RENOVATED:	2014
ZONING:	Central Business District
MARKET:	Eastern Shore Of MD
SUB MARKET:	Salisbury
CROSS STREETS:	Baptist Street & East Main Street

PROPERTY DESCRIPTION

6,189 sq.ft. of professional office space for lease in downtown Salisbury. Offers convenient location within walking distance of the court houses and all downtown amenities. Offer receptionist areas, private offices, kitchen area, conference rooms and open bullpen areas. Offers some dedicated parking spaces with 2 additional public parking lots each only 1 block away.



HENRY HANNA, CCIM, SIOR
Council Chair Of Industrial Properties
410.543.2420
henry.hanna@svn.com

WESLEY COX, CCIM
Senior Advisor
410.543.2421
wesley.cox@svn.com

All Sperry Van Ness® Offices Independently Owned & Operated.
The information listed above has been obtained from sources we believe to be reliable, however, we accept no responsibility for its correctness.

svnmler.com



FOR LEASE | OFFICE

PROFESSIONAL OFFICE SPACE FOR LEASE

201 E. Main Street, Salisbury, MD 21801



HENRY HANNA, CCIM, SIOR

Council Chair Of Industrial Properties
410.543.2420
henry.hanna@svn.com

WESLEY COX, CCIM

Senior Advisor
410.543.2421
wesley.cox@svn.com

All Sperry Van Ness® Offices Independently Owned & Operated.
The information listed above has been obtained from sources we believe to be reliable, however, we accept no responsibility for its correctness.

svnmler.com



FOR LEASE | OFFICE

PROFESSIONAL OFFICE SPACE FOR LEASE

201 E. Main Street, Salisbury, MD 21801



HENRY HANNA, CCIM, SIOR
Council Chair Of Industrial Properties
410.543.2420
henry.hanna@svn.com

WESLEY COX, CCIM
Senior Advisor
410.543.2421
wesley.cox@svn.com

All Sperry Van Ness® Offices Independently Owned & Operated.
The information listed above has been obtained from sources we believe to be reliable, however, we accept no responsibility for its correctness.

svnmler.com



FOR LEASE | OFFICE

PROFESSIONAL OFFICE SPACE FOR LEASE

201 E. Main Street, Salisbury, MD 21801



HENRY HANNA, CCIM, SIOR

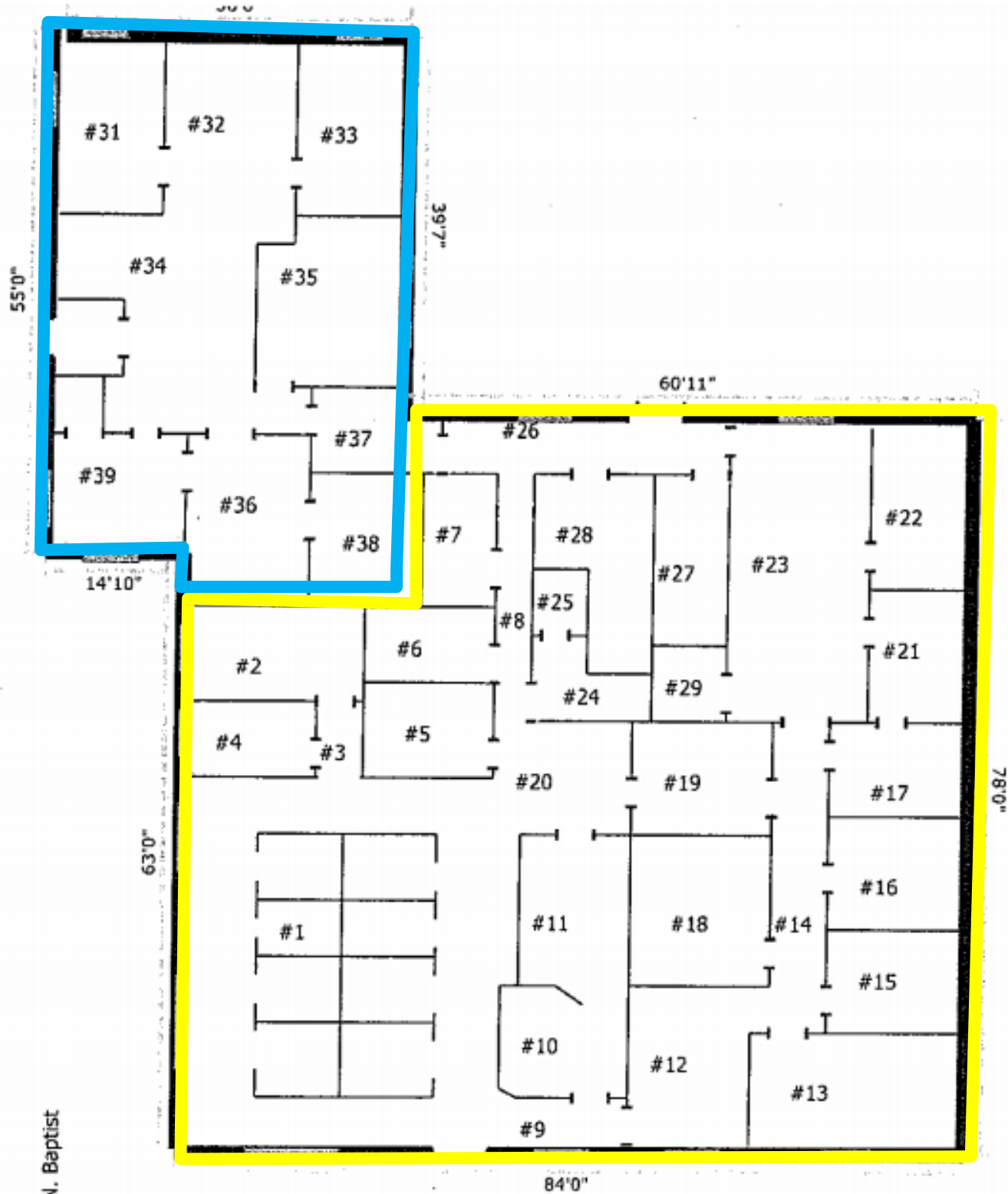
Council Chair Of Industrial Properties
410.543.2420
henry.hanna@svn.com

WESLEY COX, CCIM

Senior Advisor
410.543.2421
wesley.cox@svn.com

All Sperry Van Ness® Offices Independently Owned & Operated.
The information listed above has been obtained from sources we believe to be reliable, however, we accept no responsibility for its correctness.

svnmler.com



107 N. Baptist

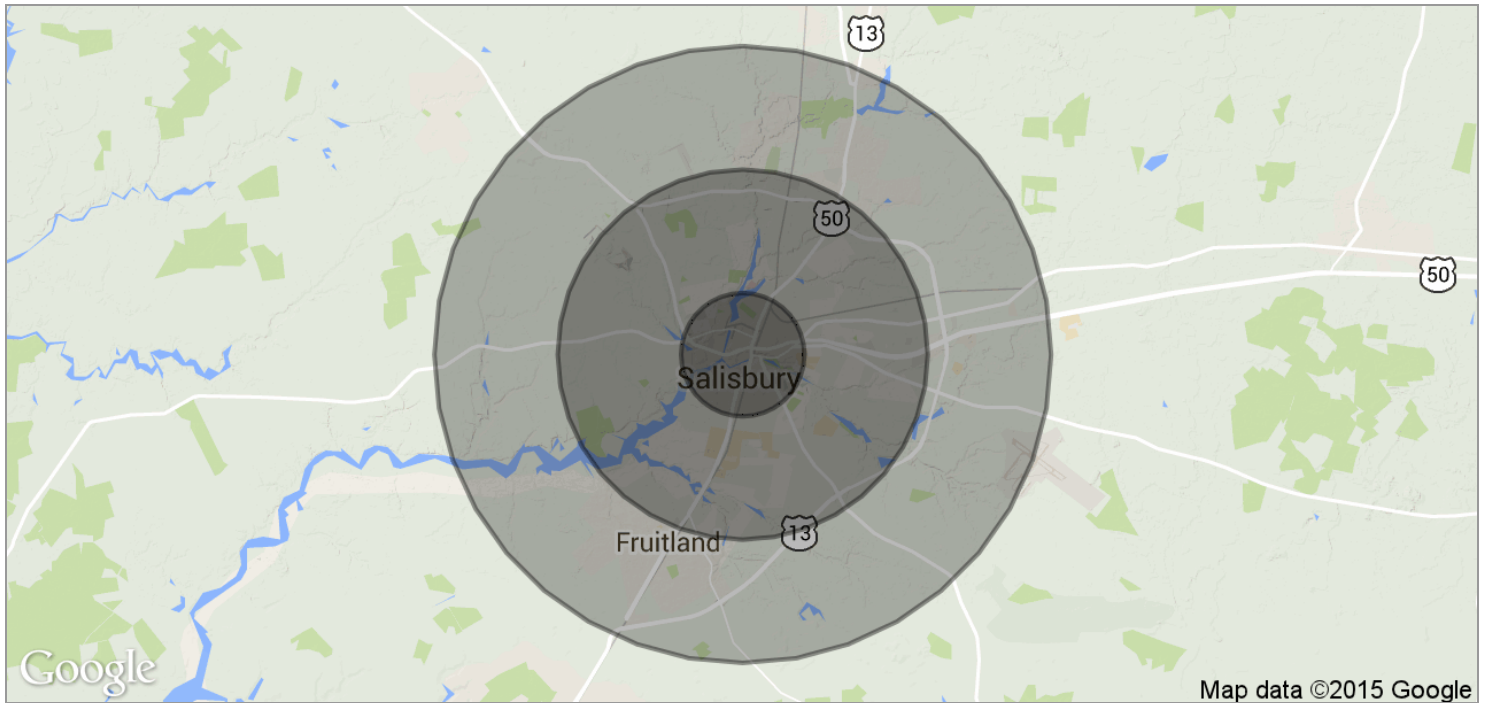
201 E. Main Street



FOR LEASE | OFFICE

PROFESSIONAL OFFICE SPACE FOR LEASE

201 E. Main Street, Salisbury, MD 21801



POPULATION	1 MILE	3 MILES	5 MILES
TOTAL POPULATION	11,654	48,875	77,350
MEDIAN AGE	30.1	31.4	33.3
MEDIAN AGE (MALE)	30.5	30.3	31.8
MEDIAN AGE (FEMALE)	30.0	31.9	34.1
HOUSEHOLDS & INCOME	1 MILE	3 MILES	5 MILES
TOTAL HOUSEHOLDS	4,152	18,216	28,916
# OF PERSONS PER HH	2.8	2.7	2.7
AVERAGE HH INCOME	\$48,509	\$54,747	\$61,900
AVERAGE HOUSE VALUE	\$169,012	\$187,330	\$205,812



HENRY HANNA, CCIM, SIOR
Council Chair Of Industrial Properties
410.543.2420
henry.hanna@svn.com

WESLEY COX, CCIM
Senior Advisor
410.543.2421
wesley.cox@svn.com

All Sperry Van Ness® Offices Independently Owned & Operated.
The information listed above has been obtained from sources we believe to be reliable, however, we accept no responsibility for its correctness.

svnmler.com



FOR LEASE | OFFICE

PROFESSIONAL OFFICE SPACE FOR LEASE

201 E. Main Street, Salisbury, MD 21801



HENRY HANNA, CCIM, SIOR
Council Chair Of Industrial Properties
410.543.2420
henry.hanna@svn.com

WESLEY COX, CCIM
Senior Advisor
410.543.2421
wesley.cox@svn.com

All Sperry Van Ness® Offices Independently Owned & Operated.
The information listed above has been obtained from sources we believe to be reliable, however, we accept no responsibility for its correctness.

svnmler.com