

OFFICE SPACE FOR LEASE

TAYLOR MILL TRIFECTA

5114 TAYLOR MILL ROAD
TAYLOR MILL, KY 41015

CLASS A PROPERTY



PROPERTY HIGHLIGHTS

- + Available Suites:
 - 2nd floor - 4,000 sq. ft.
 - 3rd floor - 2,070 sq. ft.
- + \$16.00 sq. ft. NNN
- + On-Site Management & Ownership
- + Ample Parking
- + Highly Visible and Accessible via I-275
- + Taylor Mill Trifecta houses 3 iconic Cincinnati brands - Graeter's Ice Cream, LaRosa's Pizza & Skyline Chili
- + Centered in an amenity rich environment
- + Moments from Northern Kentucky University with enrollment of 12,000+ students



CONTACT US

CHRIS CAREY

Associate
+1 513 369 1369
chris.carey@cbre.com

NICK GREIWE

Associate
+1 513 369 1372
nick.greive@cbre.com

www.cbre.us/cincinnati

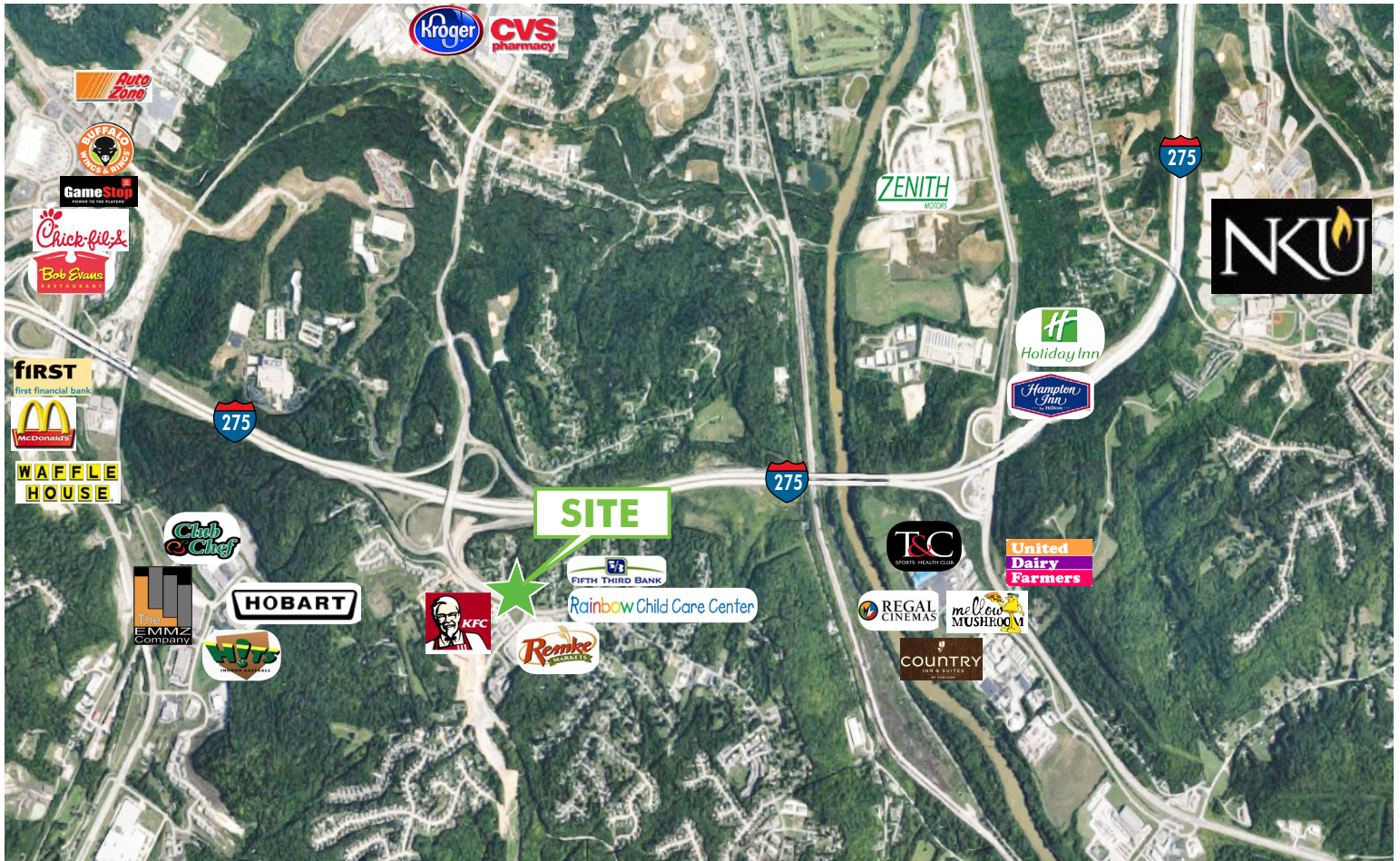
CBRE

OFFICE SPACE FOR LEASE

5114 TAYLOR MILL ROAD
TAYLOR MILL, KY 41015



AREA AMENITIES



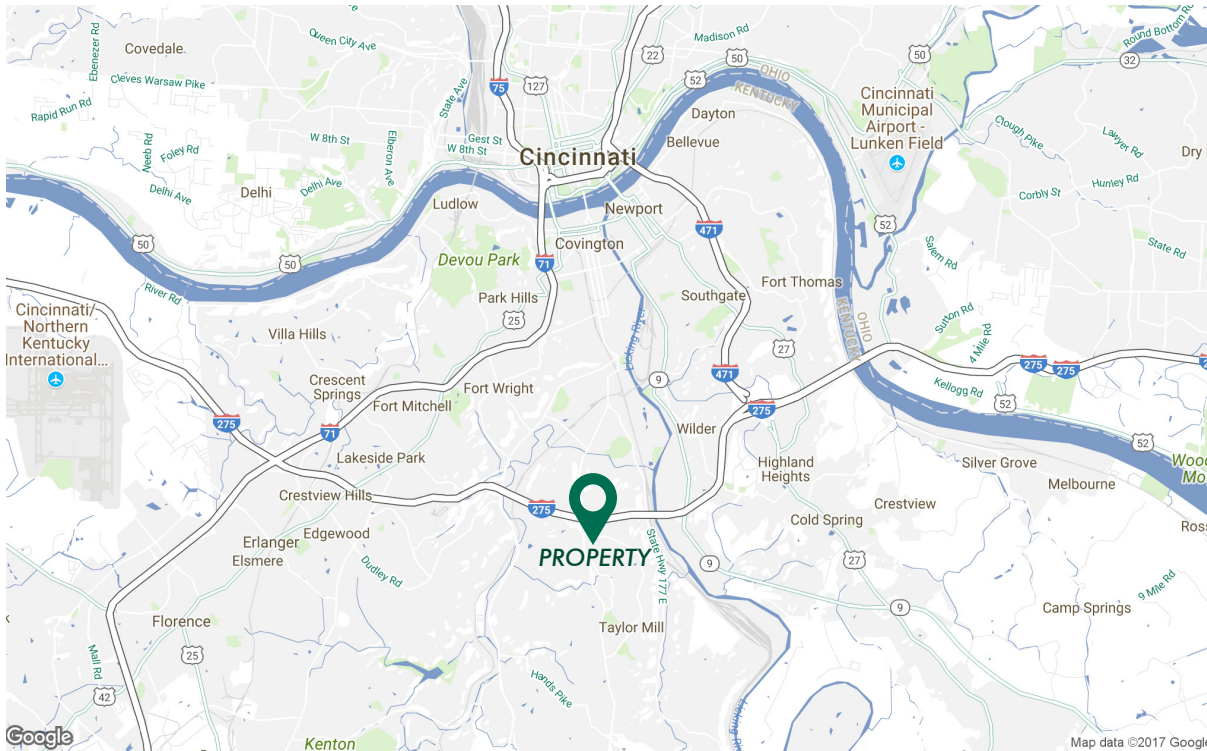
© 2017 CBRE, Inc. All rights reserved. This information has been obtained from sources believed reliable, but has not been verified for accuracy or completeness. You should conduct a careful, independent investigation of the property and verify all information. Any reliance on this information is solely at your own risk. CBRE and the CBRE logo are service marks of CBRE, Inc. All other marks displayed on this document are the property of their respective owners. Photos herein are the property of their respective owners. Use of these images without the express written consent of the owner is prohibited.

OFFICE SPACE FOR LEASE

5114 TAYLOR MILL ROAD
TAYLOR MILL, KY 41015



LOCATION MAP



DEMOGRAPHICS 2017	1 MILE	3 MILE	5 MILE
ESTIMATED POPULATION	3,335	44,539	151,725
AVERAGE HOUSEHOLD INCOME	\$76,737	\$78,404	\$75,055
ESTIMATED HOUSEHOLDS	1,389	17,302	60,382
Traffic Counts: Taylor Mill Road at I-275			
28,100 VPD			



CONTACT US

CHRIS CAREY

Associate
+1 513 369 1369
chris.carey@cbre.com

NICK GREIWE

Associate
+1 513 369 1372
nick.greive@cbre.com