

AVAILABLE FOR LEASE
1375 Rutan Drive, Livermore



LISTING DATA

PROPERTY TYPE : 21,672±SF Freestanding Office/
Warehouse with Secure Yard

COMMENTS:

- Two Story Office: 7,235±SF
- Warehouse: 14,437±SF
- Secure Yard: 1.25±acres
- Clear Height: 19'-22'
- Grade Level Truck Doors (12'x14')
- 600 Amps, 208/110 Volt 3 Phase
(Tenant to verify)
- 35 Parking Stalls
- Available April, 2019

LEASE RATE: Call Broker for Details

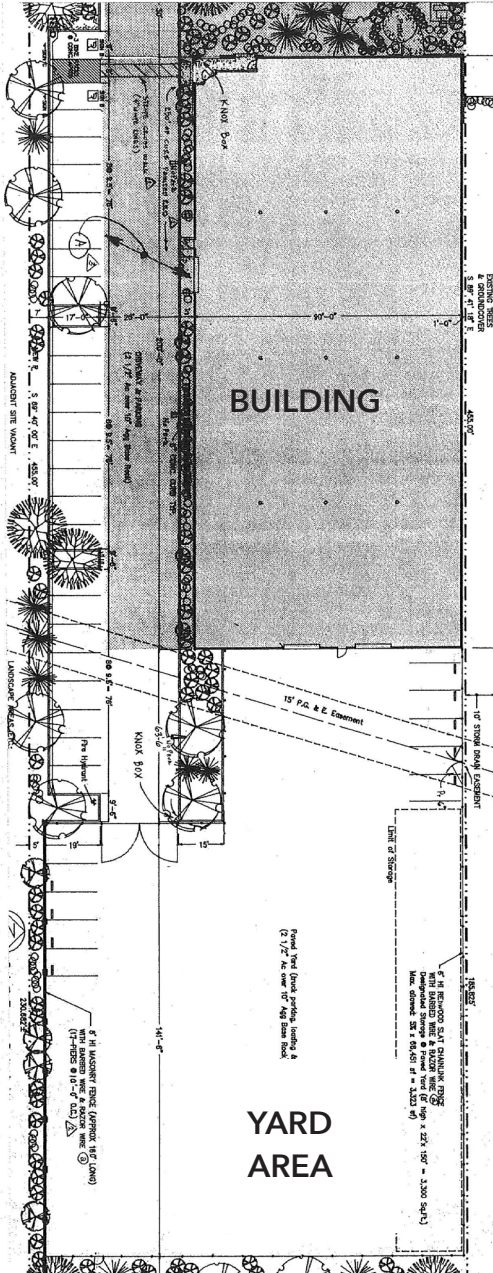


EXCLUSIVE AGENT

Sean Offers, SIOR, Principal
soffers@lee-associates.com
925.737.4159 | LIC#01858116

All information furnished regarding property for sale, rental or financing is from sources deemed reliable, but no warranty or representation is made to the accuracy thereof and same is submitted to errors, omissions, change of price, rental or other conditions prior to sale, lease or financing or withdrawal without notice. No liability of any kind is to be imposed on the broker herein.

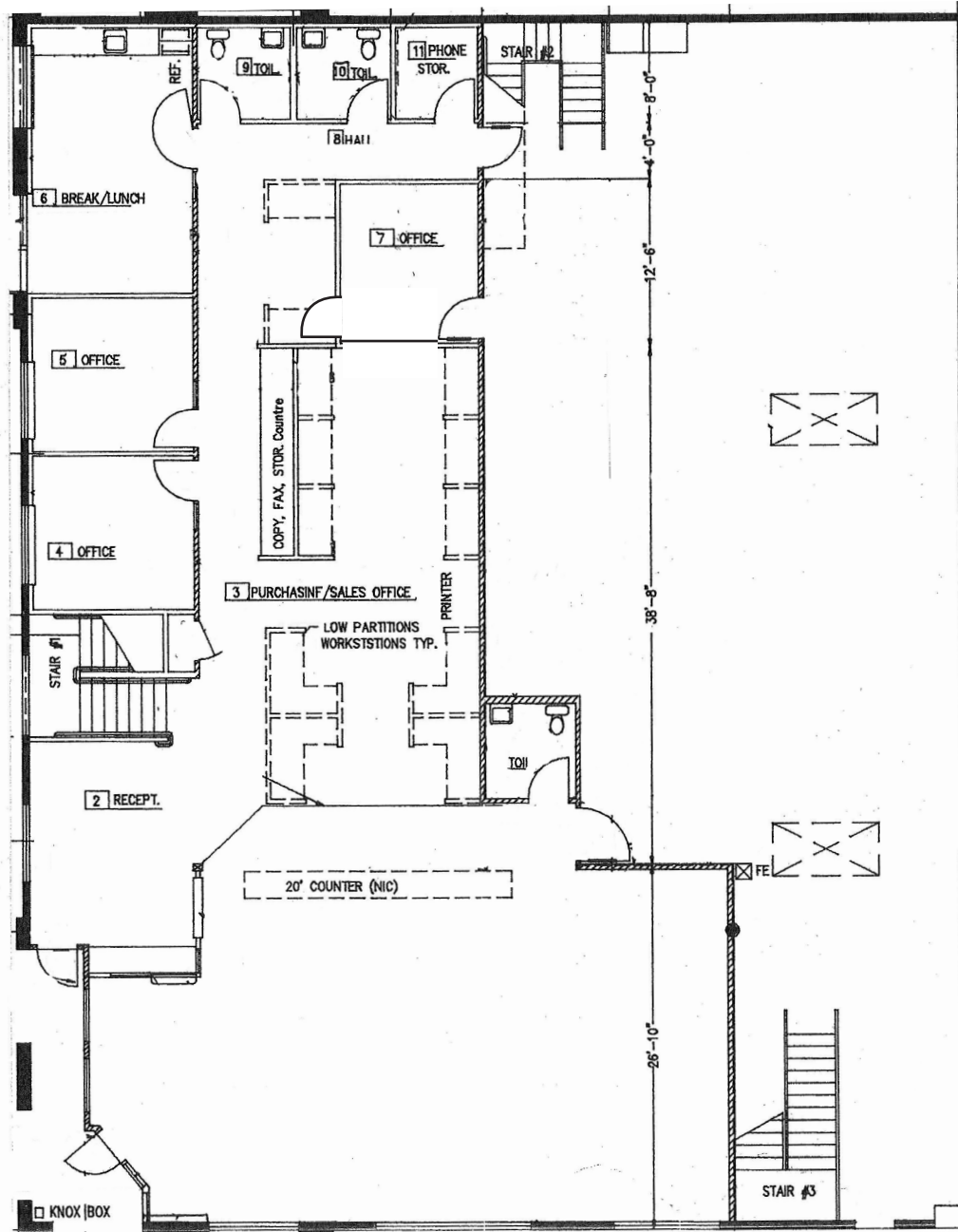
AVAILABLE FOR LEASE
1375 Rutan Drive, Livermore



EXCLUSIVE AGENT
Sean Offers, SIOR, Principal
soffers@lee-associates.com
925.737.4159 | LIC#01858116

All information furnished regarding property for sale, rental or financing is from sources deemed reliable, but no warranty or representation is made to the accuracy thereof and same is submitted to errors, omissions, change of price, rental or other conditions prior to sale, lease or financing or withdrawal without notice. No liability of any kind is to be imposed on the broker herein.

FIRST FLOOR OFFICE



EXCLUSIVE AGENT

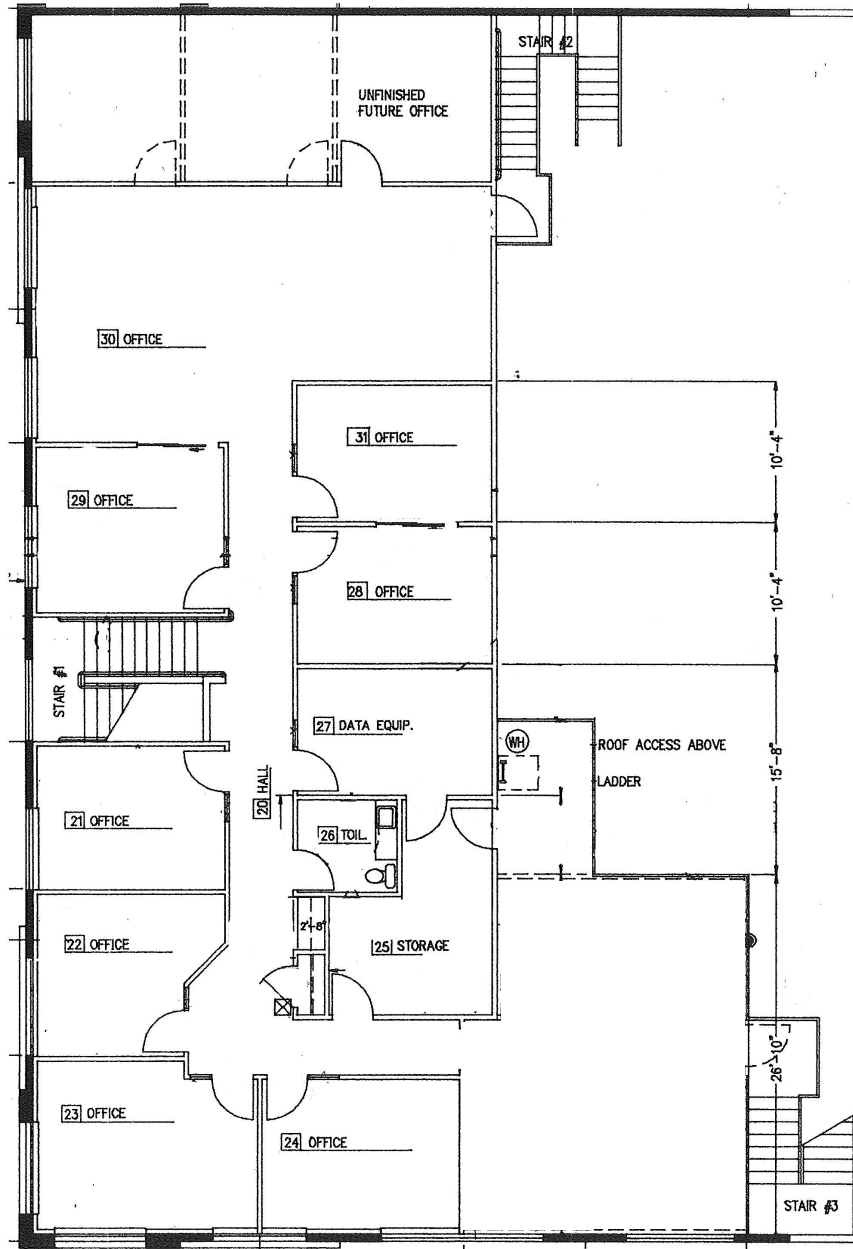
Sean Offers, SIOR, Principal

soffers@lee-associates.com

925.737.4159 | LIC#01858116

All information furnished regarding property for sale, rental or financing is from sources deemed reliable, but no warranty or representation is made to the accuracy thereof and same is submitted to errors, omissions, change of price, rental or other conditions prior to sale, lease or financing or withdrawal without notice. No liability of any kind is to be imposed on the broker herein.

SECOND FLOOR OFFICE



EXCLUSIVE AGENT

Sean Offers, SIOR, Principal

soffers@lee-associates.com

925.737.4159 | LIC#01858116

All information furnished regarding property for sale, rental or financing is from sources deemed reliable, but no warranty or representation is made to the accuracy thereof and same is submitted to errors, omissions, change of price, rental or other conditions prior to sale, lease or financing or withdrawal without notice. No liability of any kind is to be imposed on the broker herein.