

AVAILABLE

HEADQUARTERS OFFICE BUILDING

808 SW 15TH AVENUE :: PORTLAND, OR



FOR MORE
INFORMATION
PLEASE
CONTACT

Jan Bottcher

503.221.4809

jan.bottcher@cbre.com

www.cbre.com/jan.bottcher

Raymond Duchek

503.221.4838

raymond.duchek@cbre.com

www.cbre.com/raymond.duchek

Christina Flinn

503.221.4817

christina.flinn@cbre.com

www.cbre.com/christina.flinn

CB Richard Ellis | 1300 SW Fifth Avenue, Suite 3000 | Portland, OR | The brokers are licensed in the State of Oregon

FEATURES

- :: Rate - \$21/SF/NNN
- :: Glass line on three sides
- :: Exceptional quality
- :: Executive office build out
- :: Full kitchen with unique food service area
- :: Extensive IT capacity
- :: Onsite parking
- :: Walking distance to shops, restaurants & hotels
- :: On Max light rail
- :: Close to Multnomah Athletic Club & JELD-WEN Field
- :: Convenient freeway access
- :: **AVAILABLE JANUARY 2012**

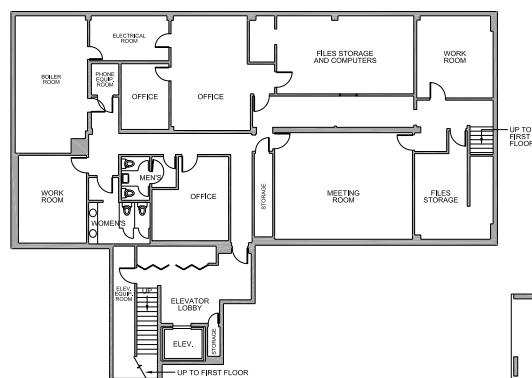
CBRE

AVAILABLE

HEADQUARTERS OFFICE BUILDING

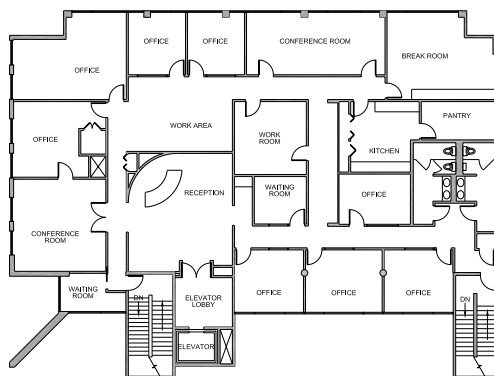
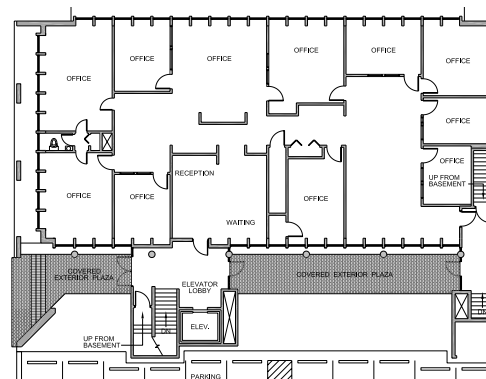
808 SW 15TH AVENUE :: PORTLAND, OR

20,653 SF available
with a fully utilized
basement and three
floors of office build out.



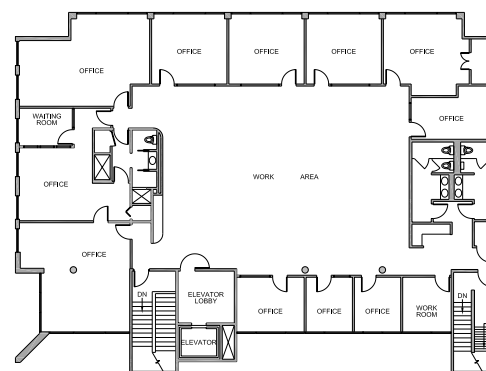
← BASEMENT

1ST FLOOR →



← 2ND FLOOR

3RD FLOOR →



FOR MORE
INFORMATION
PLEASE CONTACT

Jan Bottcher
503.221.4809
jan.bottcher@cbre.com
www.cbre.com/jan.bottcher

Raymond Duchek
503.221.4838
raymond.duchek@cbre.com
www.cbre.com/raymond.duchek

Christina Flinn
503.221.4817
christina.flinn@cbre.com
www.cbre.com/christina.flinn

© 2011 CB Richard Ellis, Inc. This information has been obtained from sources believed reliable. We have not verified it and make no guarantee, warranty or representation about it. Any projections, opinions, assumptions or estimates used are for example only and do not represent the current or future performance of the property. You and your advisors should conduct a careful, independent investigation of the property to determine to your satisfaction the suitability of the property for your needs.

CBRE