



EL DORADO HILLS BUSINESS CENTER

1100 & 1104 INVESTMENT BLVD, EL DORADO HILLS , CA

FOR LEASE

Two (2) Buildings remain in a Corporate Campus Environment • From ±9,865 - ±76,264 RSF

EL DORADO HILLS BUSINESS CENTER

ONE OF SACRAMENTO'S
PREMIER METRO
CORPORATE CAMPUSES



PROJECT OVERVIEW

- » DIVISIBLE FLOOR PLATES
- » HIGH CEILINGS
- » EXCELLENT VIEWS & NATURAL LIGHT
- » HIGH END FINISHES
- » ENERGY CERTIFIED
- » CONVENIENT ACCESS TO SACRAMENTO CBD VIA HIGHWAY 50
- » **5.3/1000** RATIO
- » MASTER PLANNED BUSINESS CENTER ADJACENT - HIKING TRAIL - TENNIS COURT
- » **22.3 ACRES** LOCATED IN THE WESTERN EL DORADO COUNTY REGION
- » **200 COMPANIES*** TENANTS INCLUDE - BLUESHIELD, DST, ENVISION
- » **6000 EMPLOYEES***
- » NEWER HIGH-QUALITY EXECUTIVE-LEVEL AND OTHER RESIDENTIAL HOUSING OPTIONS ARE LOCATED NEARBY
- » BOMA TOBY AWARD WINNER 2014

* ENTIRE EL DORADO HILLS AREA

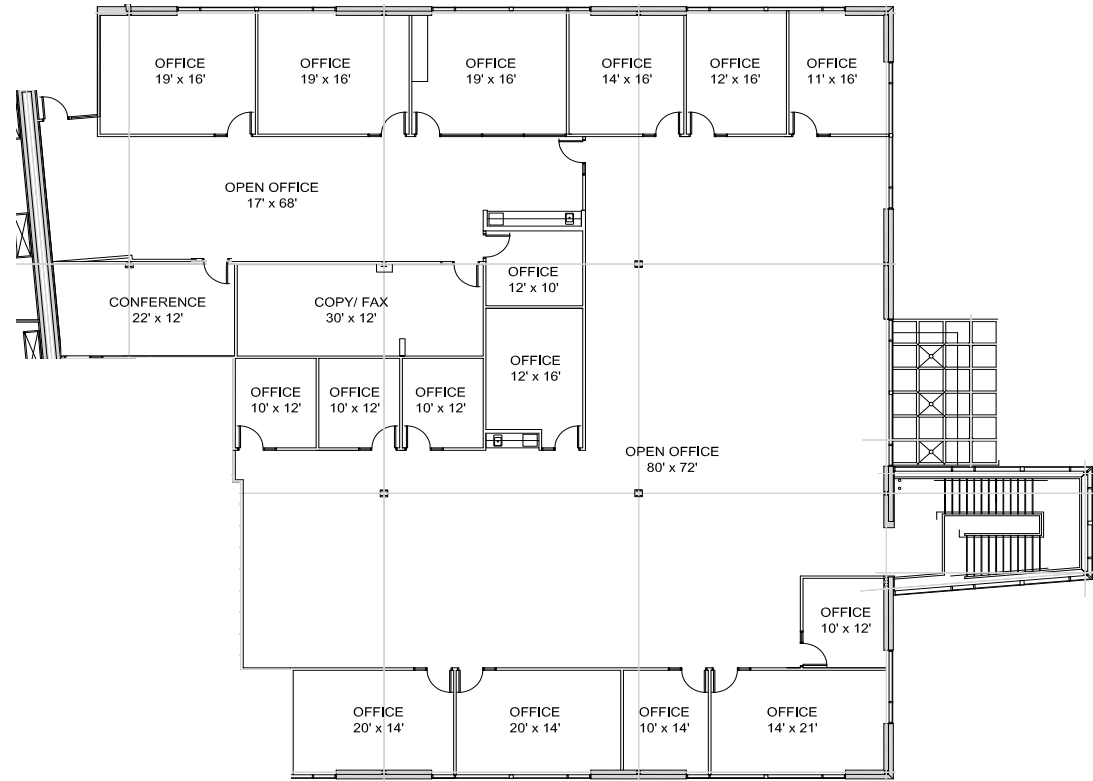


Cushman & Wakefield of California Inc., Lic #00616335
400 Capitol Mall, Suite 1800
Sacramento, CA 95814 • (916) 288 4800



FLOOR PLANS

1100 2nd Floor | ±9,865 RSF



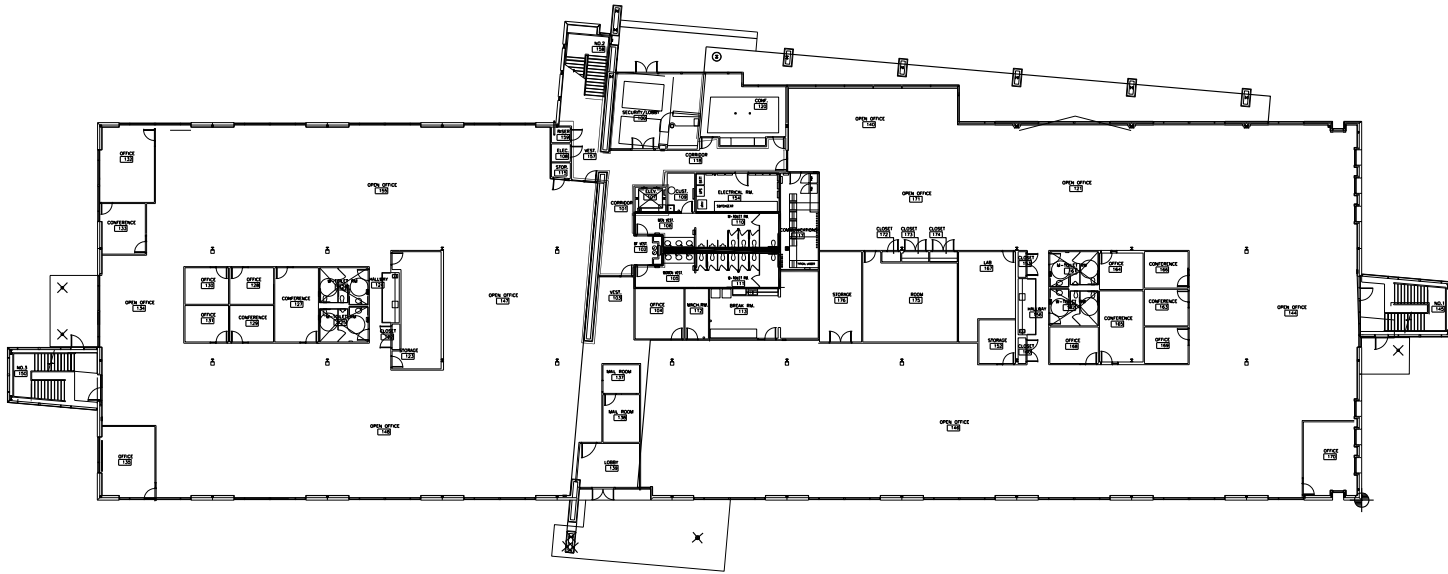
EL DORADO HILLS
BUSINESS CENTER

ONE OF SACRAMENTO'S
PREMIER METRO
CORPORATE CAMPUSES

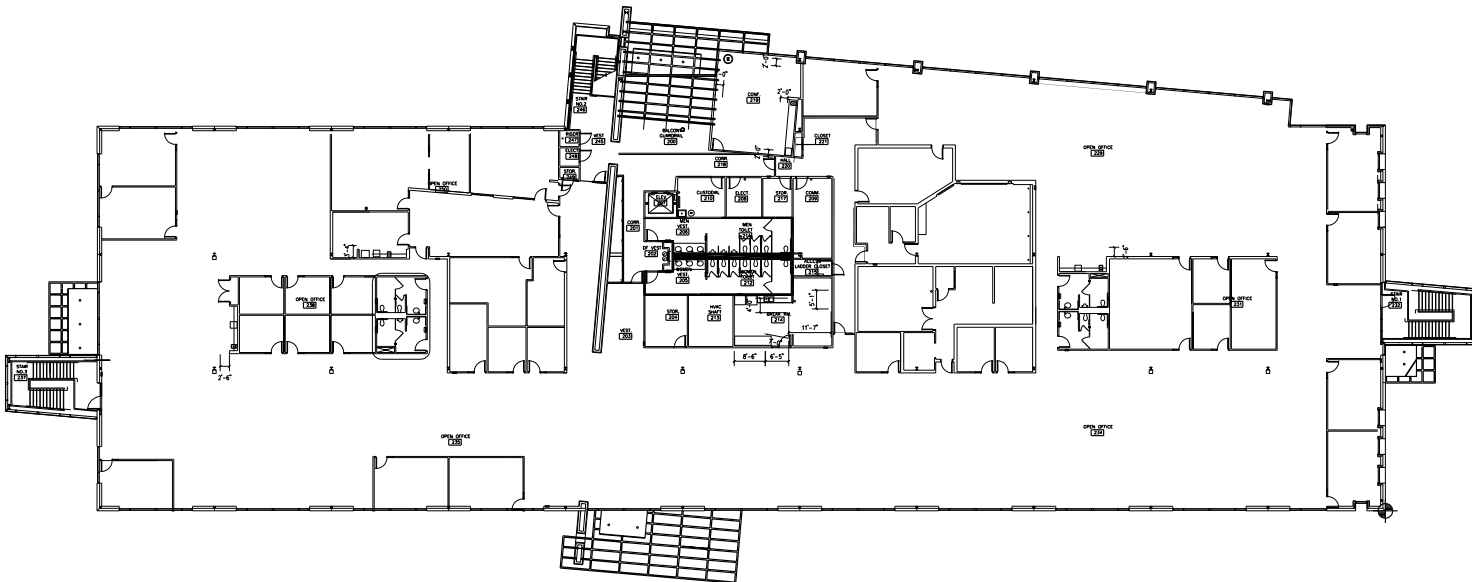


Cushman & Wakefield of California Inc.,
Lic #00616335
400 Capitol Mall, Suite 1800
Sacramento, CA 95814 • (916) 288 4800

1104 1st Floor



1104 2nd Floor



EL DORADO HILLS
BUSINESS CENTER

ONE OF SACRAMENTO'S
PREMIER METRO
CORPORATE CAMPUSES

AERIAL



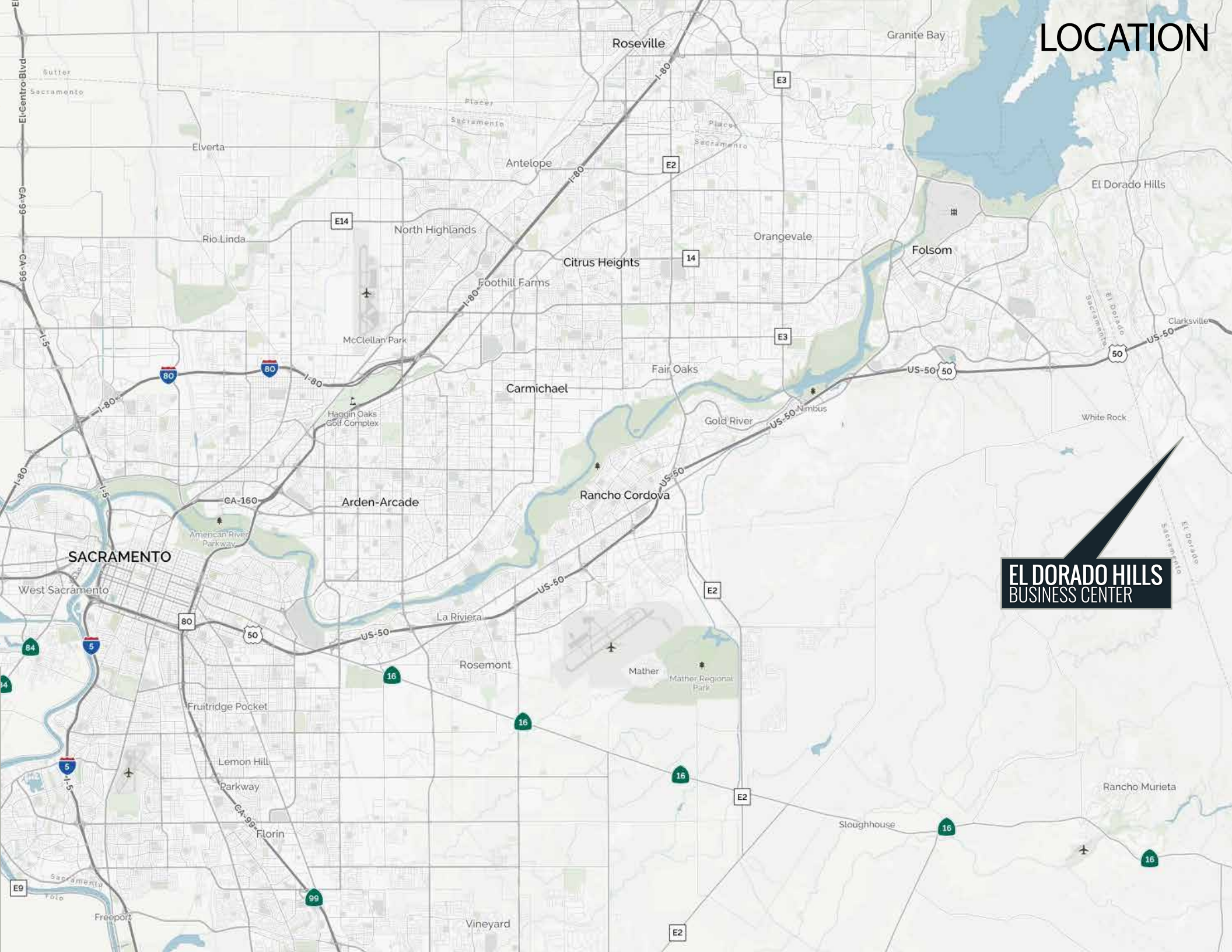
EL DORADO HILLS BUSINESS CENTER

ONE OF SACRAMENTO'S PREMIER METRO CORPORATE CAMPUSES



Cushman & Wakefield of California Inc.,
Lic #00616335
400 Capitol Mall, Suite 1800
Sacramento, CA 95814 • (916) 288 4800

LOCATION



**EL DORADO HILLS
BUSINESS CENTER**



RON THOMAS SIOR
LIC. #01193241
EXECUTIVE DIRECTOR | MANAGING
BROKER
ron.thomas@cushwake.com

BRUCE HOHENHAUS SIOR
LIC. #00677545
EXECUTIVE DIRECTOR
bruce.hohenhaus@cushwake.com



Cushman & Wakefield of California Inc.,
Lic #00616335
400 Capitol Mall, Suite 1800
Sacramento, CA 95814 • (916) 288 4800

