

IN-LINE RETAIL SPACE FOR LEASE

ESTABLISHED DEVELOPMENT WITH ±1,000 SF AVAILABLE

7919 E Thomas Rd, Scottsdale, AZ 85251



FOR MORE INFORMATION, PLEASE CONTACT:

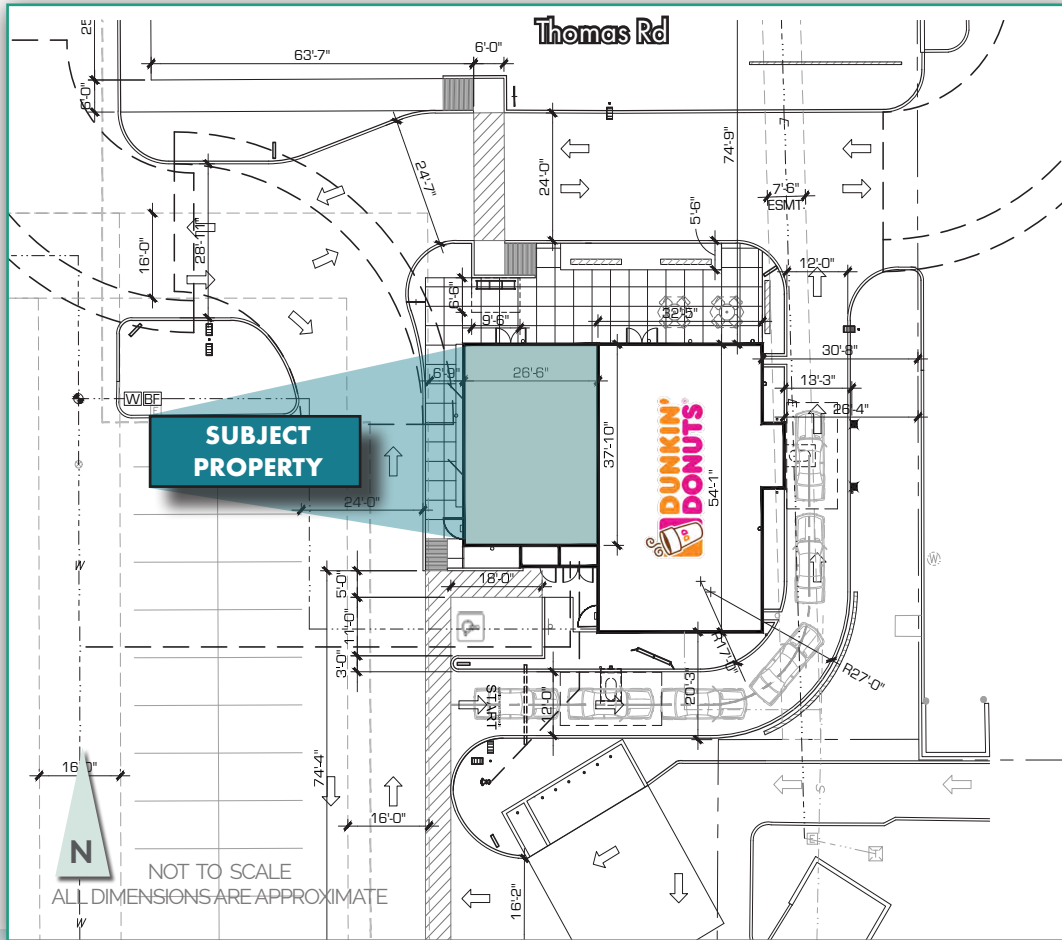
MAX BIPPUS

First Vice President
602.735.5518
max.bippus@cbre.com
www.cbre.us/max.bippus

SUZETTE BAKER

602.735.5616
suzette.baker@cbre.com
www.cbre.us/suzette.baker

CBRE



DEMOGRAPHICS

	1 Mile	3 Miles	5 Miles
2018 Population	16,783	95,377	245,652
2023 Population	17,963	103,533	267,652
2018 Median Age	38.9	40.2	32.4
2018 Households	2,986	10,023	13,192
2018-2023 Growth Rate	1.37%	1.65%	1.73%
2018 Avg HH Income	\$71,869	\$74,484	\$71,065
2018 Avg Owner Occ. Housing Units	\$256,071	\$321,082	\$368,523
2018 Businesses	844	5,165	11,322
2018 Employees	7,756	66,364	173,847

(Source: Esri)

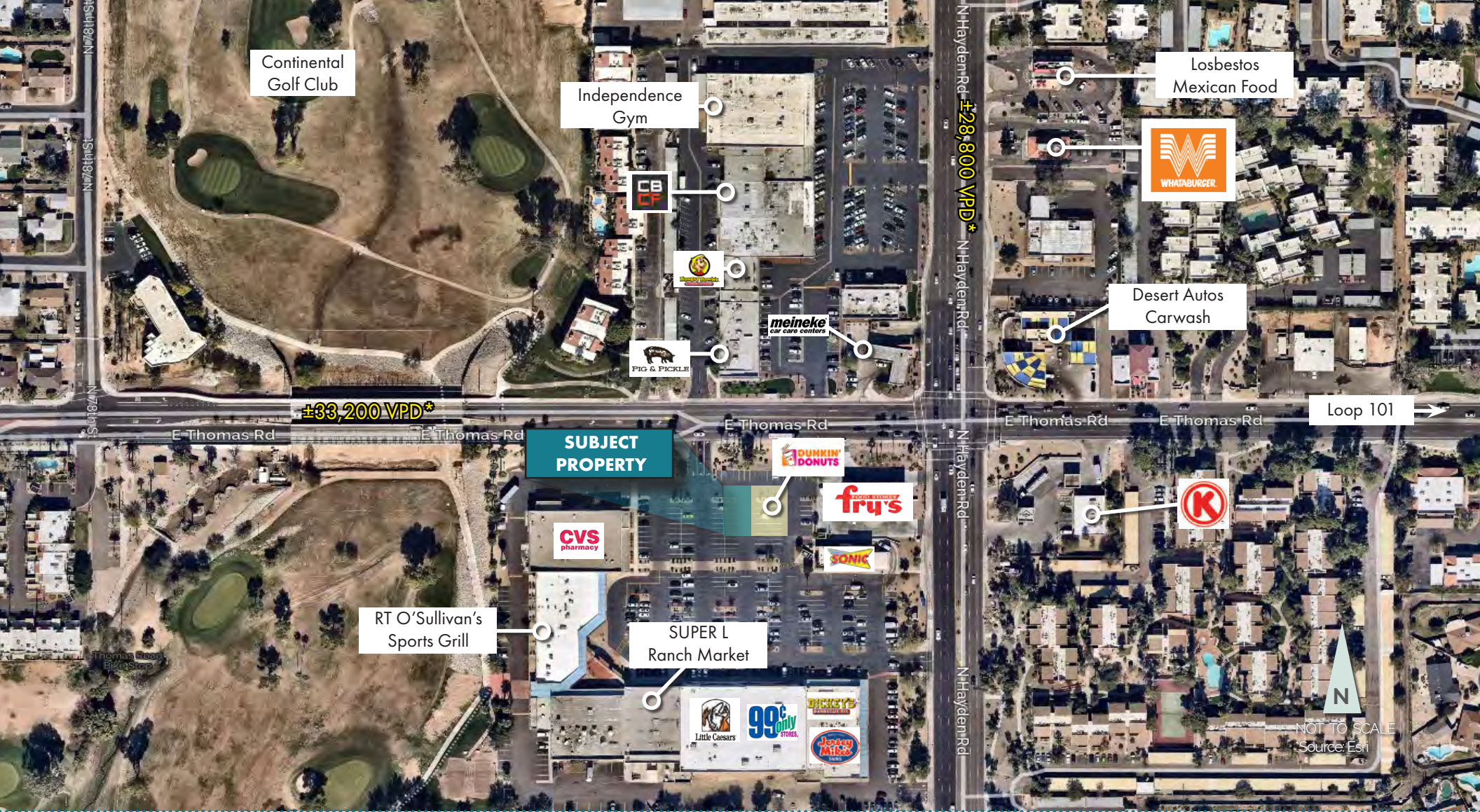
NEARBY TENANTS

CVS, 99 Cents Only Store, Super L Ranch Market, Dickies BBQ Pit, Hungry Howie's Pizza, Sonic Drive-In, Jersey Mike's Subs, Dunkin' Donuts, AZ Kidz 'n More, Circle K, Many Moons Inc Thrift Store

FEATURES

- ▲ Established development with ±1,000 SF in-line space available next to a Dunkin' Donuts
- ▲ Conveniently located at the corner of Thomas Rd and Hayden Rd
- ▲ Traffic Counts:
 - ±33,200 VPD on Thomas Rd
 - ±28,800 VPD on Hayden Rd

(Source: Esri)



FOR MORE INFORMATION, PLEASE CONTACT:

MAX BIPPUS
 First Vice President
 602.735.5518
 max.bippus@cbre.com
 www.cbre.us/max.bippus

SUZETTE BAKER
 602.735.5616
 suzette.baker@cbre.com
 www.cbre.us/suzette.baker

© 2019 CBRE, Inc. All rights reserved. This information has been obtained from sources believed reliable, but has not been verified for accuracy or completeness. You should conduct a careful, independent investigation of the property and verify all information. Any reliance on this information is solely at your own risk. CBRE and the CBRE logo are service marks of CBRE, Inc. All other marks displayed on this document are the property of their respective owners and the use of such logos does not imply any affiliation with or endorsement of CBRE. Photos herein are the property of their respective owners. Use of these images without the express written consent of the owner is prohibited.

