



FOR LEASE | OFFICE

1515 INTL PRKWY - FOR LEASE - SUITE 2025

1515 International Parkway - Suite 2025, Lake Mary, FL 32746



LEASE OVERVIEW

AVAILABLE SF:	1,775 SF
LEASE RATE:	\$21.00 SF/Yr (MG)
BUILDING SIZE:	1,776 SF
BUILDING CLASS:	A
YEAR BUILT:	2005
ZONING:	Professional Office
MARKET:	Orlando
SUB MARKET:	Lake Mary/Heathrow
CROSS STREETS:	International Parkway And 46-a

PROPERTY DESCRIPTION

This spaces are ideally suited for a high end financial services firm, law firm or any high end user that entertains clients.



MIGUEL DE ARCOS
Managing Director
407.333.9565
mdearcos@svn.com

CHRISTOPHER FOJO, CCIM
Senior Advisor
407.949.8162
chris.fojo@svn.com

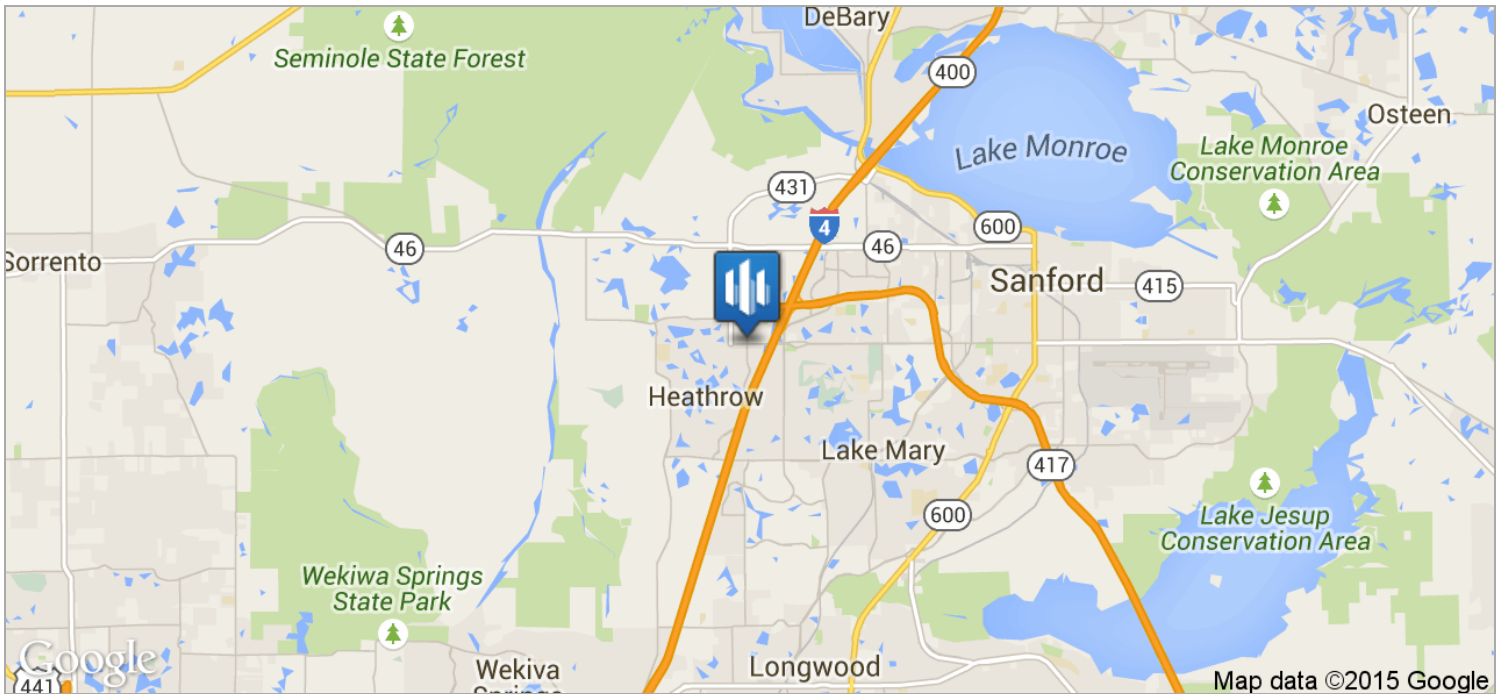
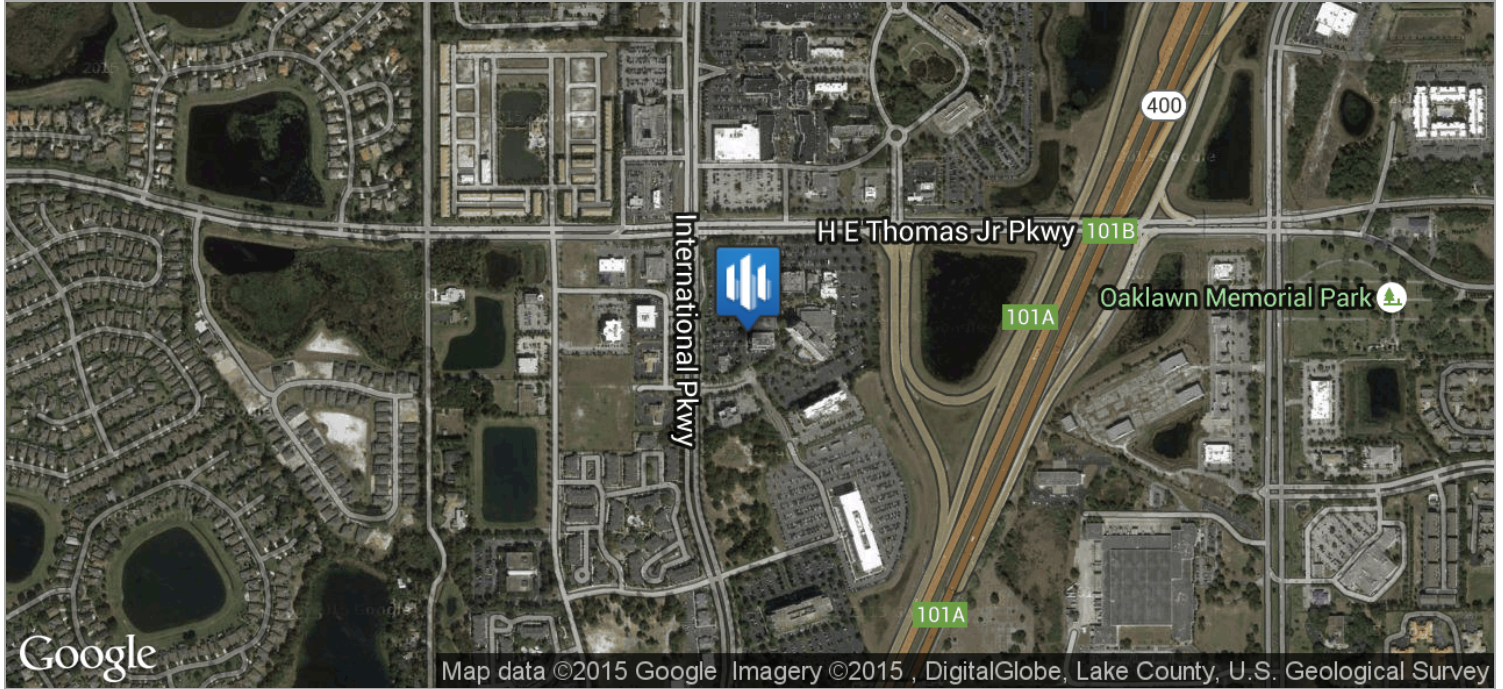
All SVN® Offices Independently Owned & Operated.
The information listed above has been obtained from sources we believe to be reliable, however, we accept no responsibility for its correctness.



FOR LEASE | OFFICE

1515 INTL PRKWY - FOR LEASE - SUITE 2025

1515 International Parkway - Suite 2025, Lake Mary, FL 32746



MIGUEL DE ARCOS
 Managing Director
 407.333.9565
 mdearcos@svn.com

CHRISTOPHER FOJO, CCIM
 Senior Advisor
 407.949.8162
 chris.fojo@svn.com

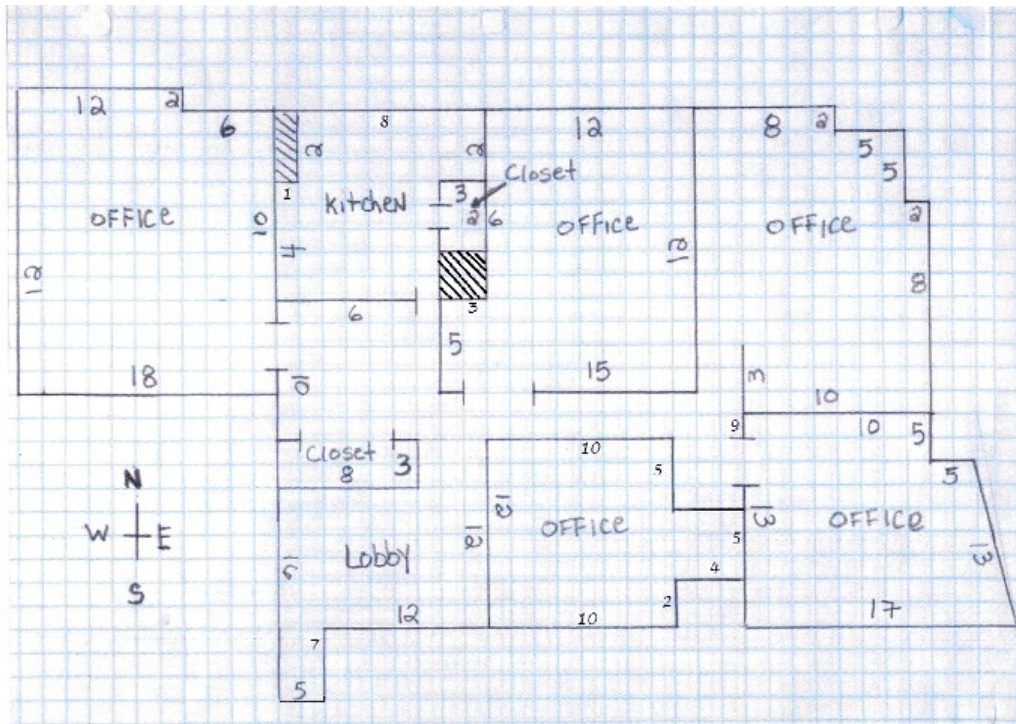
All SVN® Offices Independently Owned & Operated.
 The information listed above has been obtained from sources we believe to be reliable, however, we accept no responsibility for its correctness.



FOR LEASE | OFFICE

1515 INTL PRKWY - FOR LEASE - SUITE 2025

1515 International Parkway - Suite 2025, Lake Mary, FL 32746



MIGUEL DE ARCOS
 Managing Director
 407.333.9565
 mdearcos@svn.com

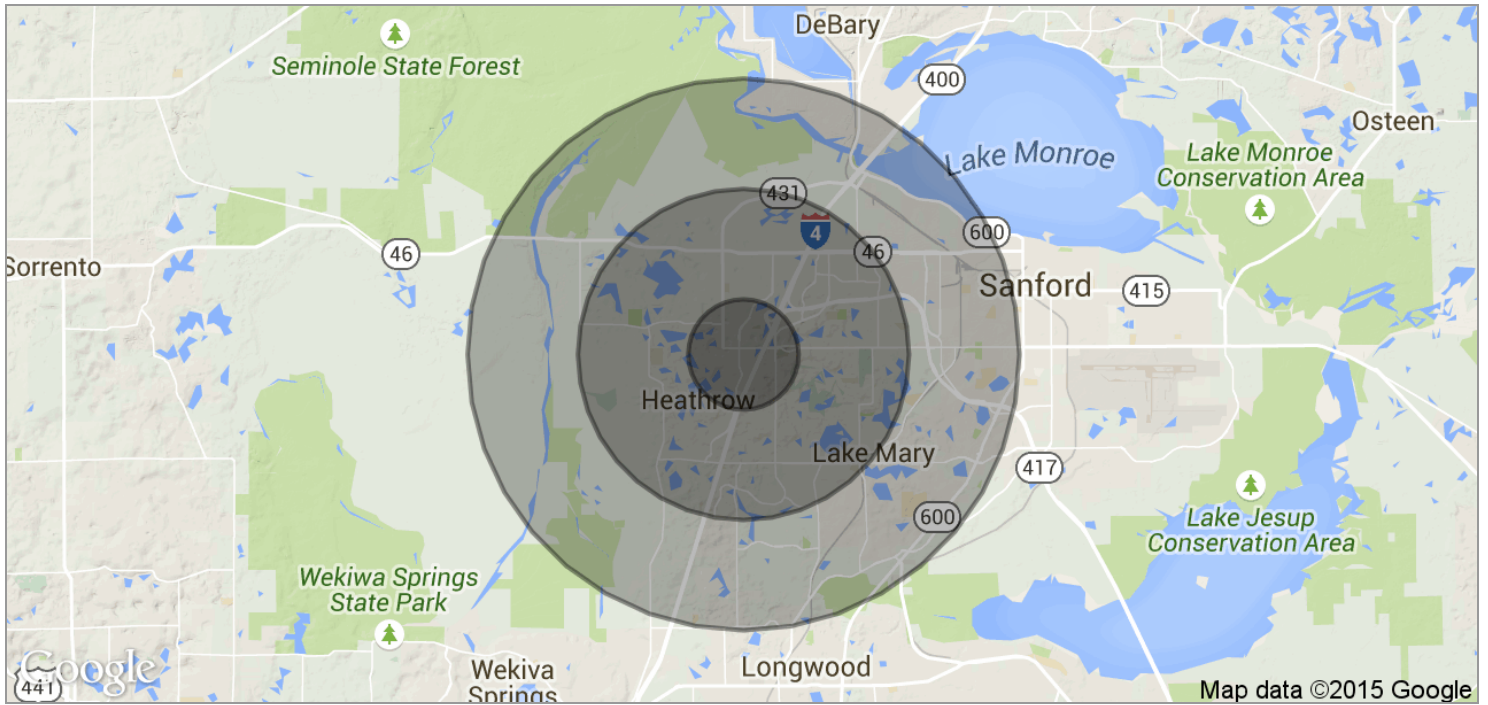
CHRISTOPHER FOJO, CCIM
 Senior Advisor
 407.949.8162
 chris.fojo@svn.com

All SVN® Offices Independently Owned & Operated.
 The information listed above has been obtained from sources we believe to be reliable, however, we accept no responsibility for its correctness.



1515 INTL PRKWY - FOR LEASE - SUITE 2025

1515 International Parkway - Suite 2025, Lake Mary, FL 32746



POPULATION	1 MILE	3 MILES	5 MILES
TOTAL POPULATION	4,054	36,302	100,119
MEDIAN AGE	41.9	38.6	37.3
MEDIAN AGE (MALE)	42.5	39.2	37.2
MEDIAN AGE (FEMALE)	41.9	38.5	37.5
HOUSEHOLDS & INCOME	1 MILE	3 MILES	5 MILES
TOTAL HOUSEHOLDS	1,589	13,726	36,033
# OF PERSONS PER HH	2.6	2.6	2.8
AVERAGE HH INCOME	\$115,751	\$100,142	\$92,974
AVERAGE HOUSE VALUE	\$468,815	\$427,084	\$385,043



MIGUEL DE ARCOS
 Managing Director
 407.333.9565
 mdearcos@svn.com

CHRISTOPHER FOJO, CCIM
 Senior Advisor
 407.949.8162
 chris.fojo@svn.com