




950

L'Enfant
Plaza SW



PROPERTY HIGHLIGHTS

- Adjacent to L'Enfant Plaza, The Square, and the new International Spy Museum (40+ restaurants and shops within Plaza)
- Minutes from the U.S. Capitol, National Mall, and the Wharf
- Metro Accessible  (L'Enfant Metro Station)
- 2,900-35,000+ suites with private entrances available
- Signage opportunity along I-395



EXCELLENT LOCATION ADJACENT
TO L'ENFANT PLAZA
+ THE SQUARE

40+

RESTAURANTS, SHOPS,
& ENTERTAINMENT



METRO ACCESSIBLE
(L'ENFANT PLAZA)

THE NEIGHBORHOOD

Restaurants + Bars

- District Wharf
- Five Guys
- Au Bon Pain
- Subway
- Starbucks (3)
- Cafe 59
- Rise n' Shine
- Moe's Southwest Grill
- Rice Bar
- Vie de France
- Potbelly
- Amsterdam Falafel Shop
- Casey's Coffee
- Pizza Autentica

Retail + Convenience

- CVS (2)
- FedEx Office Print and Ship
- Wells Fargo Bank
- Golds Gym

Hotels

- Hyatt Place Washington DC/National Mall
- Residence Inn by Marriott

Museums, Venues & Attractions

- The Anthem
- International Spy Museum
- Museum on Main Street
- Air and Space Museum
- Hirshhorn Museum
- National Museum of the American Indian
- Museums of African Art
- United States Botanic Garden



**WALKING DISTANCE
TO THE WHARF
+ NATIONAL MALL**



PROMINENT VISIBILITY +
SIGNAGE OPPORTUNITY
FACING THE WHARF
AND I-395

5 MINUTES
TO THE WHARF



I-395



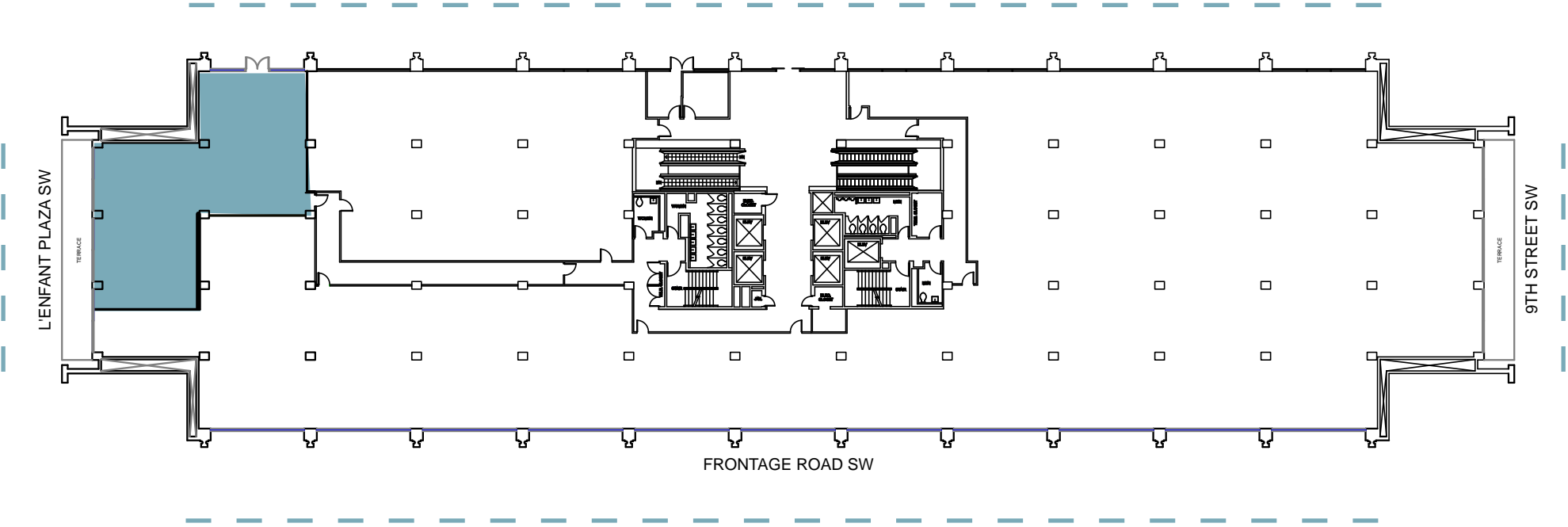
● 1ST FLOOR	2,923 RSF
● PROMENADE	36,273 RSF

SIGNAGE OPPORTUNITY

**2,900 - 35,000+ SF SUITES AVAILABLE
WITH PRIVATE ENTRANCES**

1ST FLOOR | 2,923 RSF
AVAILABLE NOW

950
L'Enfant
Plaza SW

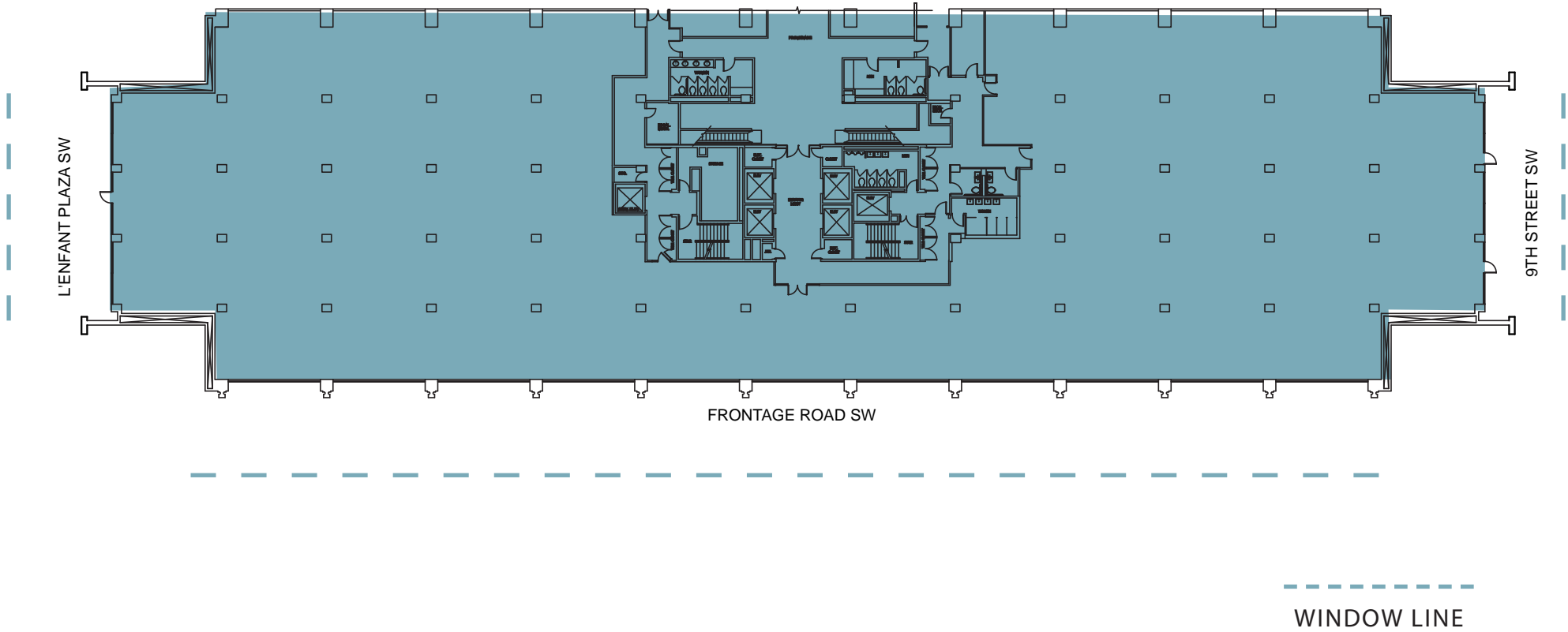


WINDOW LINE



PROMENADE | 36,273 RSF
AVAILABLE NOW

950
L'Enfant
Plaza SW



Leasing Information:

Jonathan Wellborn, Principal

202.644.8552

jonathan.wellborn@avisonyoung.com

Will Stern, Principal

202.644.8553

will.stern@avisonyoung.com

Alston Offutt, Associate

202.644.8554

alston.offutt@avisonyoung.com

**AVISON
YOUNG**

2001 K Street NW, Suite 200 North
Washington, DC 20006
202.644.8700 | avisonyoung.com

950

L'Enfant
Plaza SW

 **BOYD WATTERSON**
ASSET MANAGEMENT