

Alexandria Tech Center IV

2850 EISENHOWER AVENUE

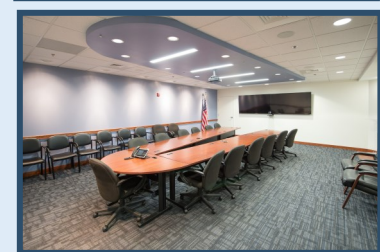
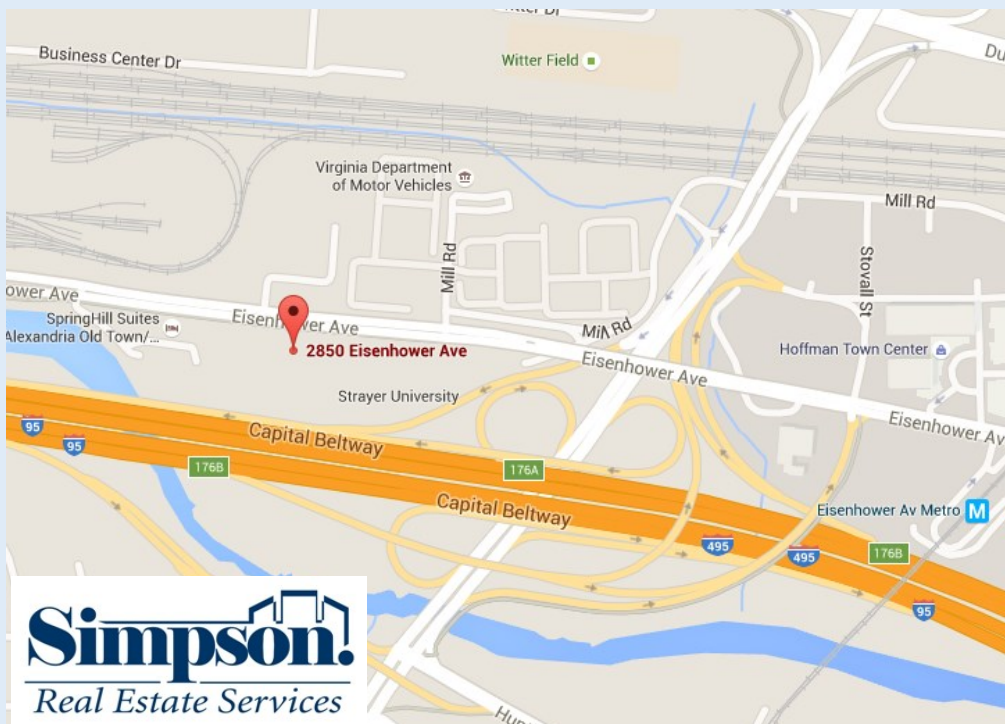
Available Immediately!

****Below Market Rates Inside the Beltway****

****Generous Tenant Build Out Allowances!****



* Ample Onsite Parking * On-Site Restaurant * Complimentary Fitness Center * Operable Balconies * Complimentary Shuttle Service to Metros & VRE * Immediate access to I-495 * Marriott Hotel and Spring Hill Suites in the office park * Metro Bus Accessible * Within walking distance to U.S. Courthouse, U.S. Patent & Trademark Office, National Science Foundation, and the Hoffman Center * Minutes to National Harbor, Washington, D.C., & Ronald Reagan National Airport *

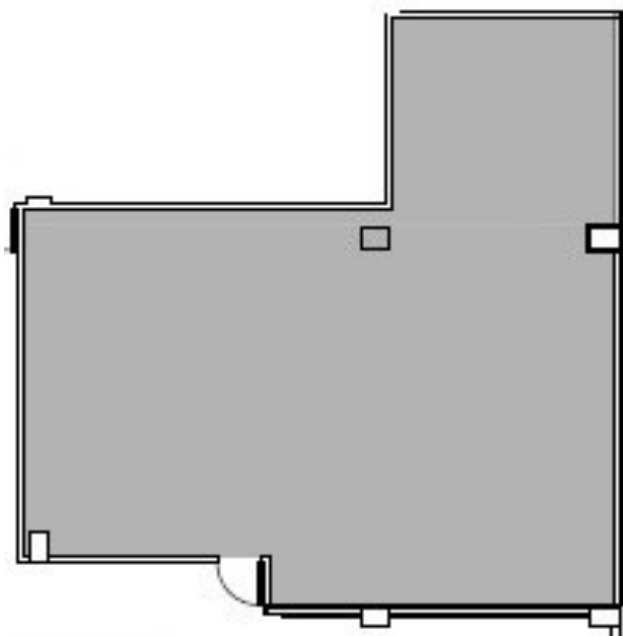


Simpson!
Real Estate Services

For Leasing, contact :: Fred Zamer :: FZamer@simpsondev.com

2331 Mill Road, Suite 150 :: Alexandria, VA 22314 :: 703-299-0029 :: www.simpsondev.com

1ST FLOOR
1,600 SF NET RENTABLE



Suite 110—**1,600 SF NET RENTABLE** —\$3,600 per month for a 5 year term

For Leasing, contact :: Fred Zamer :: FZamer@simpsondev.com
2331 Mill Road, Suite 150 :: Alexandria, VA 22314 :: 703-299-0029 :: www.simpsondev.com

